

**DAMMON**  
ENGINEERING, INC.

CHIEF ENGINEER  
EMMETT  
DAMMON, P.E.

CHIEF ARCHITECT  
ROBERT  
WILTSE

1095 FLORIDA AVENUE  
SIDELL, LA. 70438  
OFFICE: 985-649-5832  
FAX: 985-641-5950

WWW.DAMMONENGINEERING.COM  
EMAIL: DAMMONENG@BELL.SOUJH.NET

ARCHITECTURE  
ENGINEERING  
STUDIES  
PLANNING  
INVESTIGATION  
EXPERT WITNESS

**PRECIOUS**  
**JEWELS**  
**DAY CARE**  
**CENTER**

FRIEDA  
TORREGANO  
58074 CARROLL RD.  
SIDELL, LA  
70460

**LANDSCAPING**  
**PLAN**

REV:

SCALE: AS NOTED

JOB#: 1991

DATE: XX-XX-08

SHEET

**L-1**

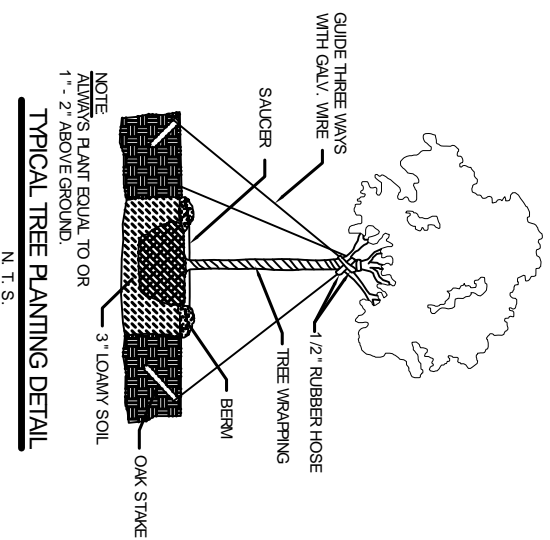
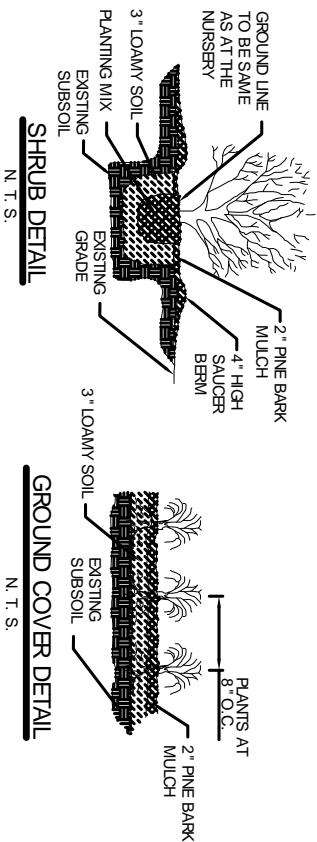
OF

**STREET PLANTING AREA REQ.:**  
CLASS 'A' TREES - 1 PER 30' OF ROAD FRONTAGE  
2.25' FRONTAGE = 7.5  
CLASS 'B' TREES - 1 PER 30' OF ROAD FRONTAGE  
2.25' FRONTAGE = 7.5  
SHRUBS - 1 PER 10' OF ROAD FRONTAGE  
2.25' FRONTAGE = 22.5  
GROUND COVER - LIVING VEGETATIVE COVER  
OVER ENTIRE SURFACE OF STREET PLANTING  
AREAS.

**NORTH SIDE BUFFER PLANTING AREA REQ.:**  
CLASS 'A' TREES - 1 PER 30' OF PLANTING AREA  
4.5' LENGTH = 1.5  
CLASS 'B' TREES - 1 PER 30' OF PLANTING AREA  
4.5' LENGTH = 1.5  
SHRUBS - 1 PER 10' OF PLANTING AREA  
4.5' LENGTH = 22.5  
GROUND COVER - LIVING VEGETATIVE COVER  
OVER ENTIRE SURFACE OF BUFFER PLANTING AREA  
OTHER THAN DRAINAGE WAY.

**EAST SIDE BUFFER PLANTING AREA REQ.:**  
CLASS 'A' TREES - 1 PER 30' OF PLANTING AREA  
1.70' LENGTH = 5.6  
CLASS 'B' TREES - 1 PER 30' OF PLANTING AREA  
1.70' LENGTH = 5.6  
SHRUBS - 1 PER 10' OF PLANTING AREA  
1.70' LENGTH = 17  
GROUND COVER - LIVING VEGETATIVE COVER  
OVER ENTIRE SURFACE OF BUFFER PLANTING AREA  
OTHER THAN DRAINAGE WAY.

**SOUTH SIDE BUFFER PLANTING AREA REQ.:**  
CLASS 'A' TREES - 1 PER 30' OF PLANTING AREA  
1.30' LENGTH = 4.3  
CLASS 'B' TREES - 1 PER 30' OF PLANTING AREA  
1.30' LENGTH = 4.3  
SHRUBS - 1 PER 10' OF PLANTING AREA  
1.30' LENGTH = 13  
GROUND COVER - LIVING VEGETATIVE COVER  
OVER ENTIRE SURFACE OF BUFFER PLANTING AREA  
OTHER THAN DRAINAGE WAY.



**LANDSCAPING REQUIREMENTS**

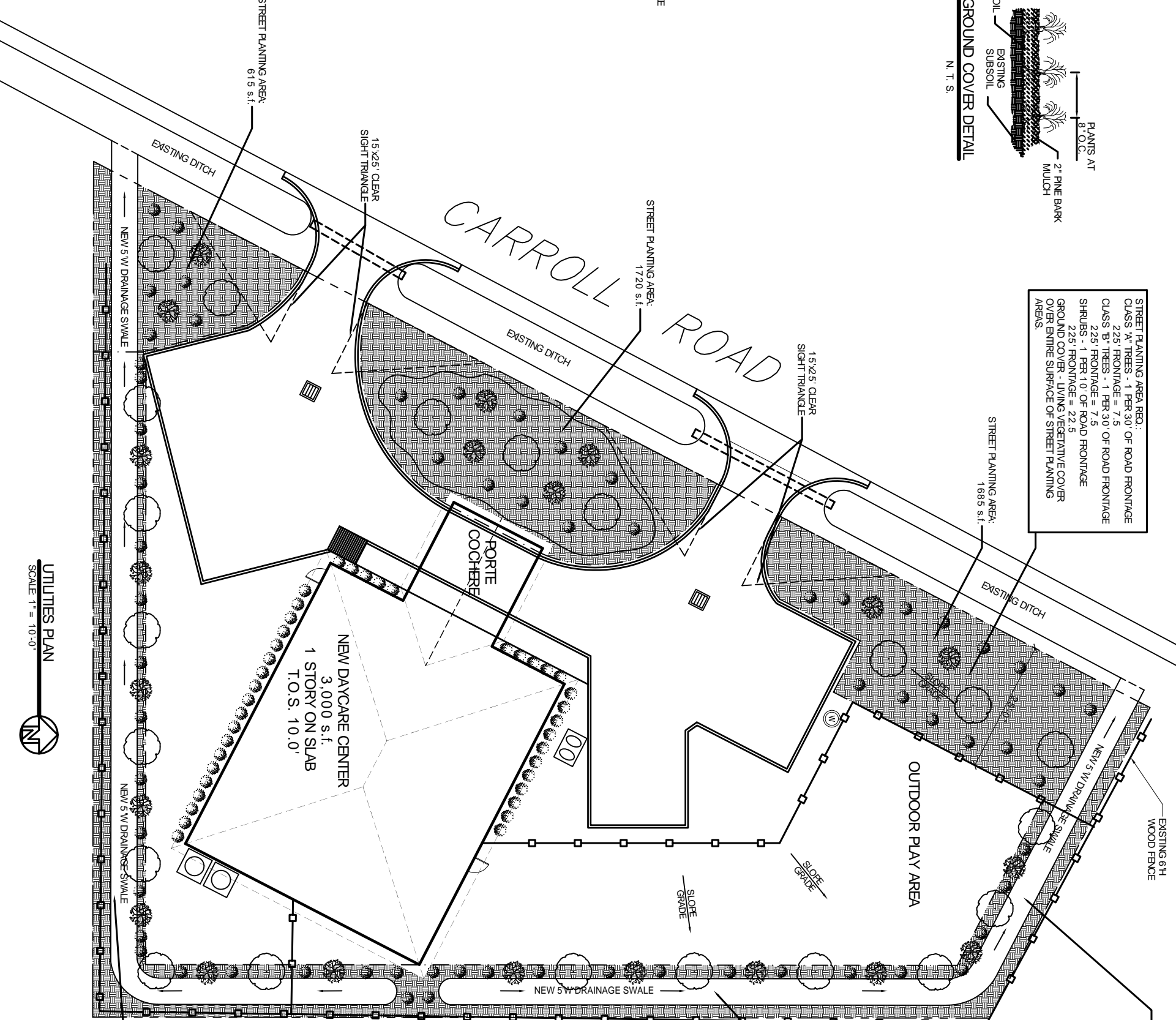
- CLASS 'A' TREE SHALL HAVE A MINIMUM CALIPER OF AT LEAST 2-1/2" (MEASURED 6" ABOVE ROOT BALL), A MIN. HEIGHT OF 10'-12' AT PLANTING, AND AN OVERBALL HEIGHT OF 50' AT MATURITY.
- CLASS 'B' TREE SHALL HAVE A MINIMUM CALIPER OF AT LEAST 1-1/2" (MEASURED 6" ABOVE ROOT BALL), A MIN. HEIGHT OF 8'-10' AT PLANTING, AND AN OVERBALL HEIGHT OF 28' AT MATURITY.
- SHRUBS 10' O.C. SHALL HAVE A MIN. HEIGHT OF 2' AT TIME OF PLANTING.
- GROUND COVER SHALL BE MULCH MATERIAL, VEGETATIVE OR MINERAL, OR PLANT MATERIAL WHICH REACHES A MAX. HEIGHT OF 12" AT MATURITY.

**LANDSCAPING NOTES:**

- PROVIDE A 25' STREET PLANTING AREA WITH GROUND COVER ADJACENT TO CARROLL ROAD.
- PROVIDE 10' SIDE AND REAR BUFFER PLANTING AREAS WITH GROUND COVER.
- PROVIDE SCREENING FOR PARKING ADJACENT TO STREET PLANTING AREA. ROW OF SHRUBS SHALL BE SPACED MAX. 2-6" O.C. IN THIS AREA. (SEE PLAN)
- BUILDING FACADE PLANTING AREA SHALL BE MIN. 4'-0" WIDE.
- LANDSCAPED PARKING ISLANDS SHALL ALTERNATE CLASS 'A' & CLASS 'B' TREES, AND INCLUDE GROUND COVER.
- LANDSCAPING SPECIES SHALL BE SELECTED IN ACCORDANCE WITH THE GUIDELINES SET FORTH IN THE ST. TAMMANY ZONING ORDINANCE SEC 5.1613. SPECIES OF CLASS 'A' AND 'B' TREES, AND SHRUBS SHALL BE SELECTED BY THE OWNER/LANDSCAPE CONTRACTOR.

**LEGEND**

- PROPERTY LINE
- NEW BLDG. FOOTPRINT
- SETBACK LINE
- NEW FENCE
- 6" CONCRETE CURB
- NEW DRAINAGE CATCH BASIN



**UTILITIES PLAN**  
SCALE 1" = 10'-0"

