

DAMMON
ENGINEERING, INC.

CHIEF ENGINEER
EMMETT
DAMMON, P.E.
CHIEF ARCHITECT
ROBERT
WILTSE

1095 FLORIDA AVENUE
SLIDELL, LA, 70436
OFFICE: 985-649-5332
FAX: 985-641-5950

WEBSITE:
WWW.DAMMONENGINEERING.COM
EMAIL:
DAMMONENG@BELL.SOUTH.NET

ARCHITECTURE
ENGINEERING
STUDIES
PLANNING
INVESTIGATION
EXPERT WITNESS

NEW
CREMATORY

TERRY TRANCHINA
HONAKER
FUNERAL HOME
SLIDEL, LA

EXTERIOR
ELEVATIONS

REV:

SCALE: AS NOTED

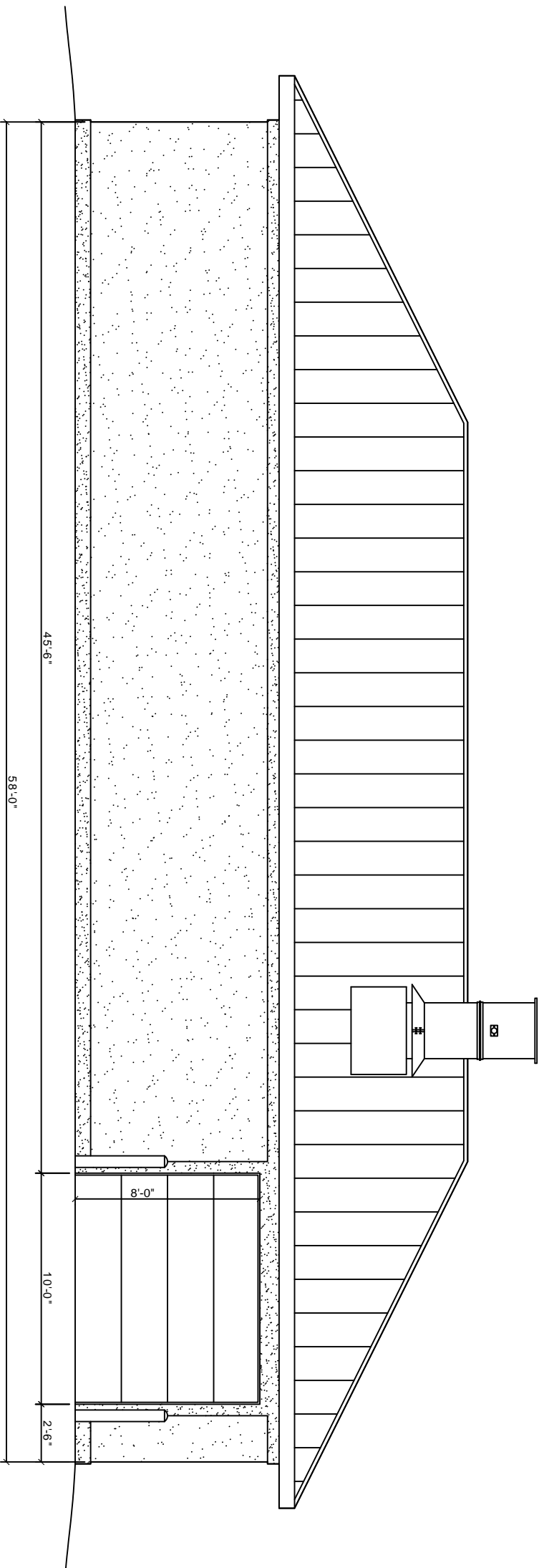
JOB#:

DATE: 5-26-09

SHEET

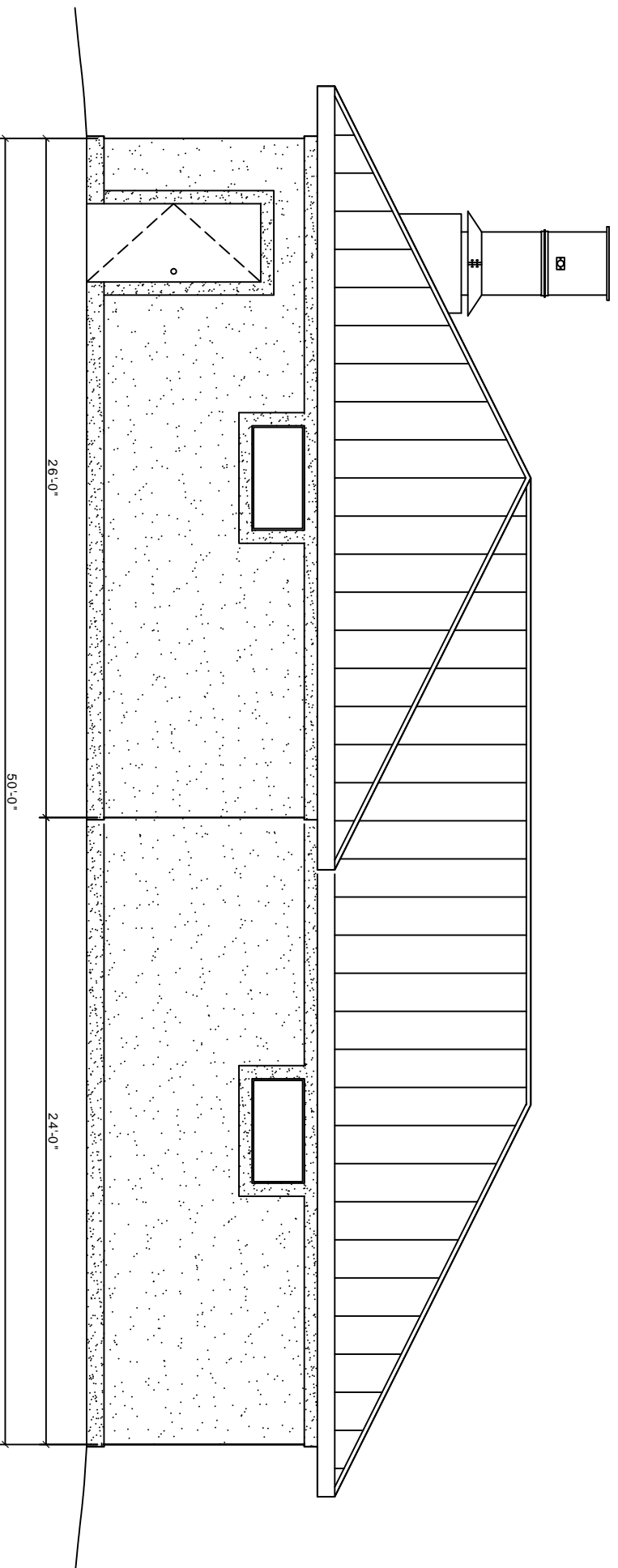
A-3

OF



EAST ELEVATION

SCALE 3/8" = 1'-0"



NORTH ELEVATION

SCALE 3/8" = 1'-0"