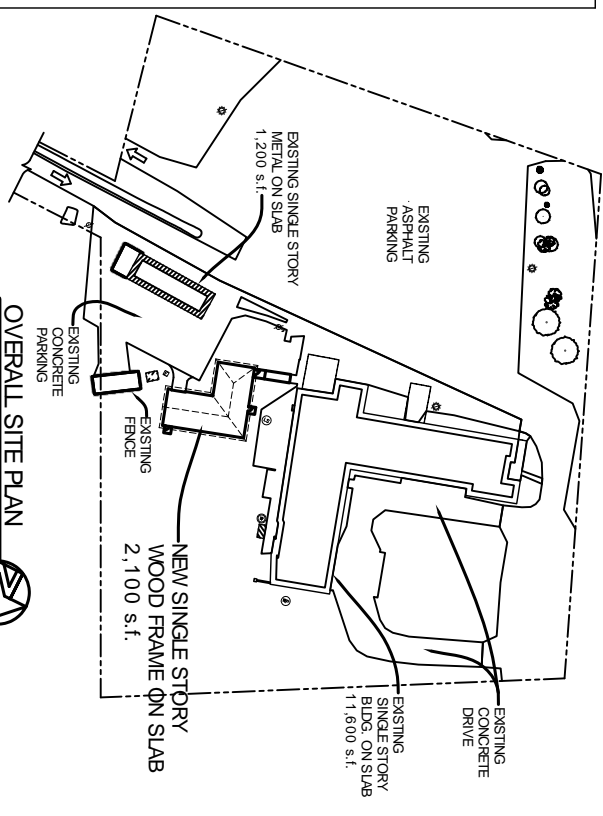


PARTIAL SITE PLAN
SCALE 1" = 10'-0"



OVERALL SITE PLAN
N.T.S.

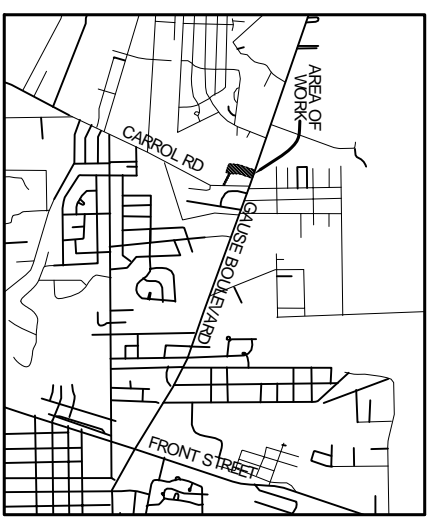
LEGEND

- PROPERTY LINE
- NEW BLDG. FOOTPRINT
- NEW FENCE
- NEW DRAINAGE CATCH BASIN
- ⇨ TRAFFIC FLOW DIRECTION

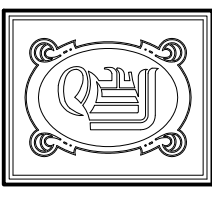
PARKING REQUIREMENTS
EXISTING ASPHALT PARKING SHALL SERVE NEW CREMATORIARY BUILDING

SITE LIGHTING
EXTERIOR LIGHTING SHALL BE SHADED OR INWARDLY DIRECTED IN SUCH A MANNER SO THAT NO DIRECT LIGHTING OR GLARE BE CAST BEYOND THE PROPERTY LINE. THE INTENSITY OF SUCH LIGHTING SHALL NOT EXCEED ONE FOOT CANDLE AS MEASURED AT THE ADJUTING PROPERTY LINE. (N/A)

- SITE PLAN NOTES**
1. ROOFING MATERIAL - 3-TAB ASPHALT SHINGLES
 2. SIDING MATERIAL - VINYL SIDING
 3. UTILITIES: ALL NEW UTILITIES SHALL BE PLACED UNDERGROUND.



VICINITY MAP
N.T.S.



DAMMON ENGINEERING, INC.

CHIEF ENGINEER
EMMETT DAMMON, P.E.
CHIEF ARCHITECT
ROBERT WILTSE

1095 FLORIDA AVENUE
SUDDLE, LA 70458
OFFICE 985-649-5882
FAX 985-641-5950

WWW.DAMMONENGINEERING.COM
EMAIL: DAMMONENG@BLSOUTH.NET

ARCHITECTURE
ENGINEERING
STUDIES
PLANNING
INVESTIGATION
EXPERT WITNESS

NEW CREMATION AND EMBALMING FACILITY

HONAKER FUNERAL HOME
TERRY TRANCHINA
1751 W. GAUSE BLVD
SUDDLE, LA

SITE PLAN

REV:

SCALE: AS NOTED

JOB#: 1999

DATE: 6-9-09

SHEET 2

C-1

OF 19