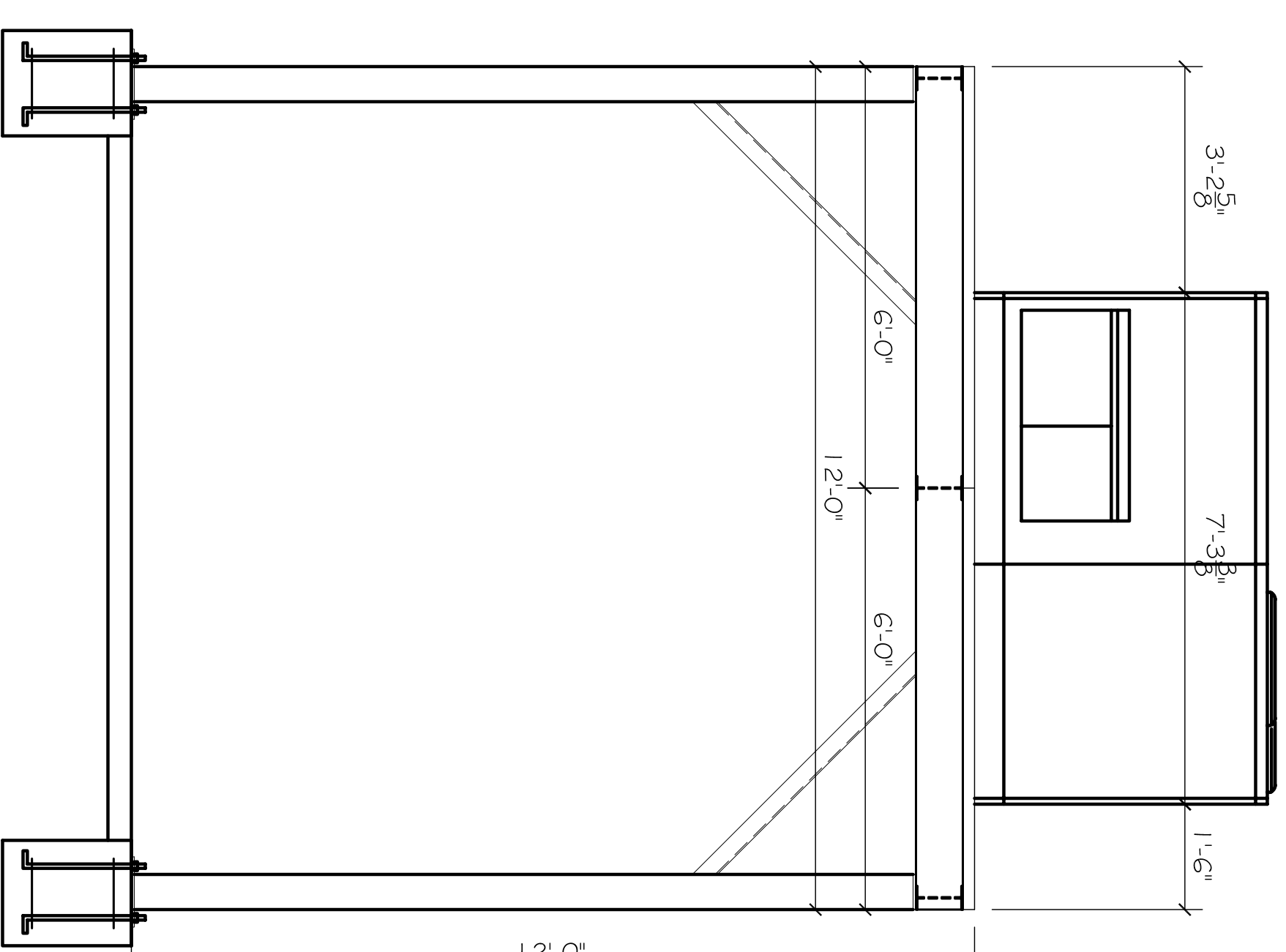


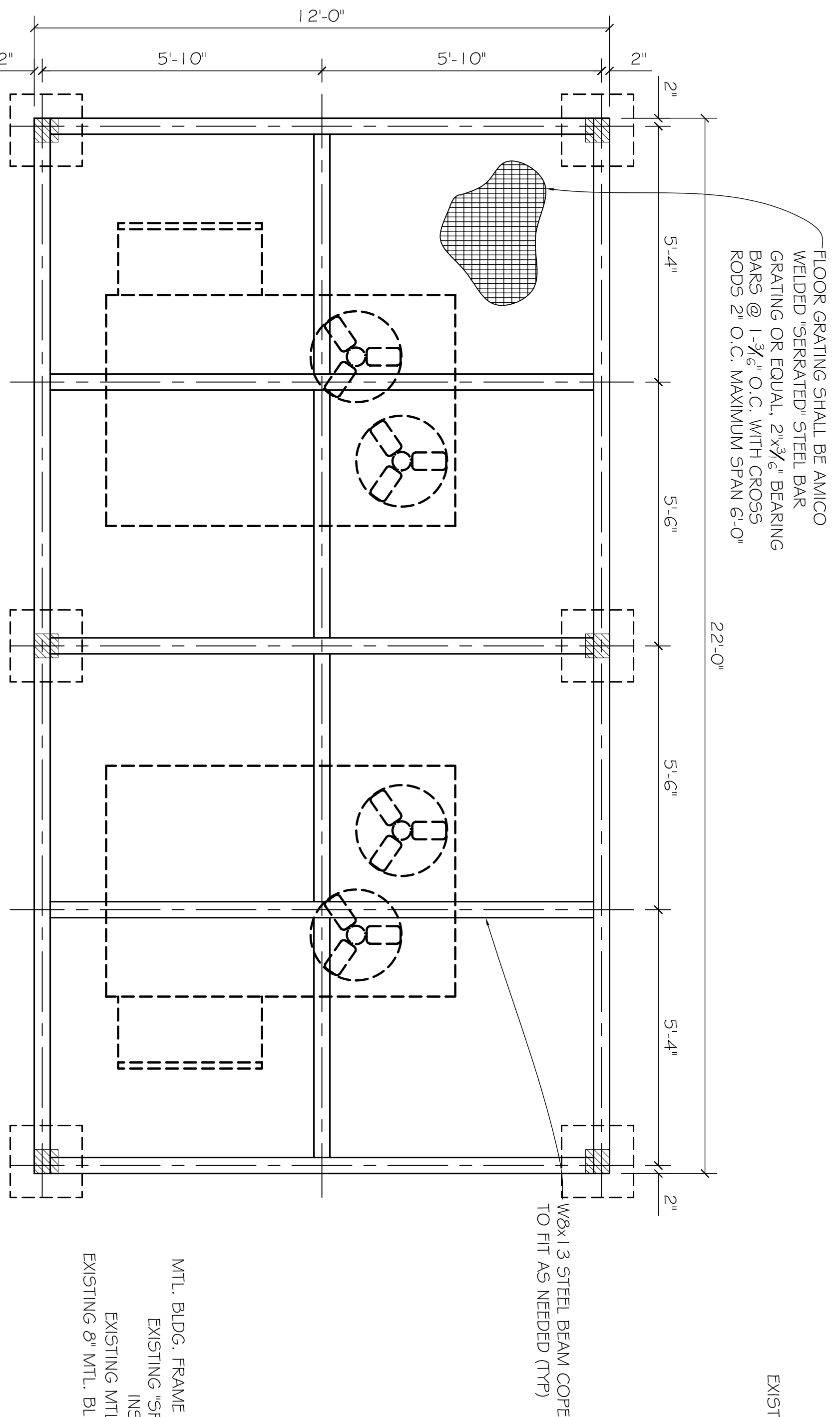
AC PLATFORM FRONT ELEVATION

SCALE: 1/2" = 1'-0"



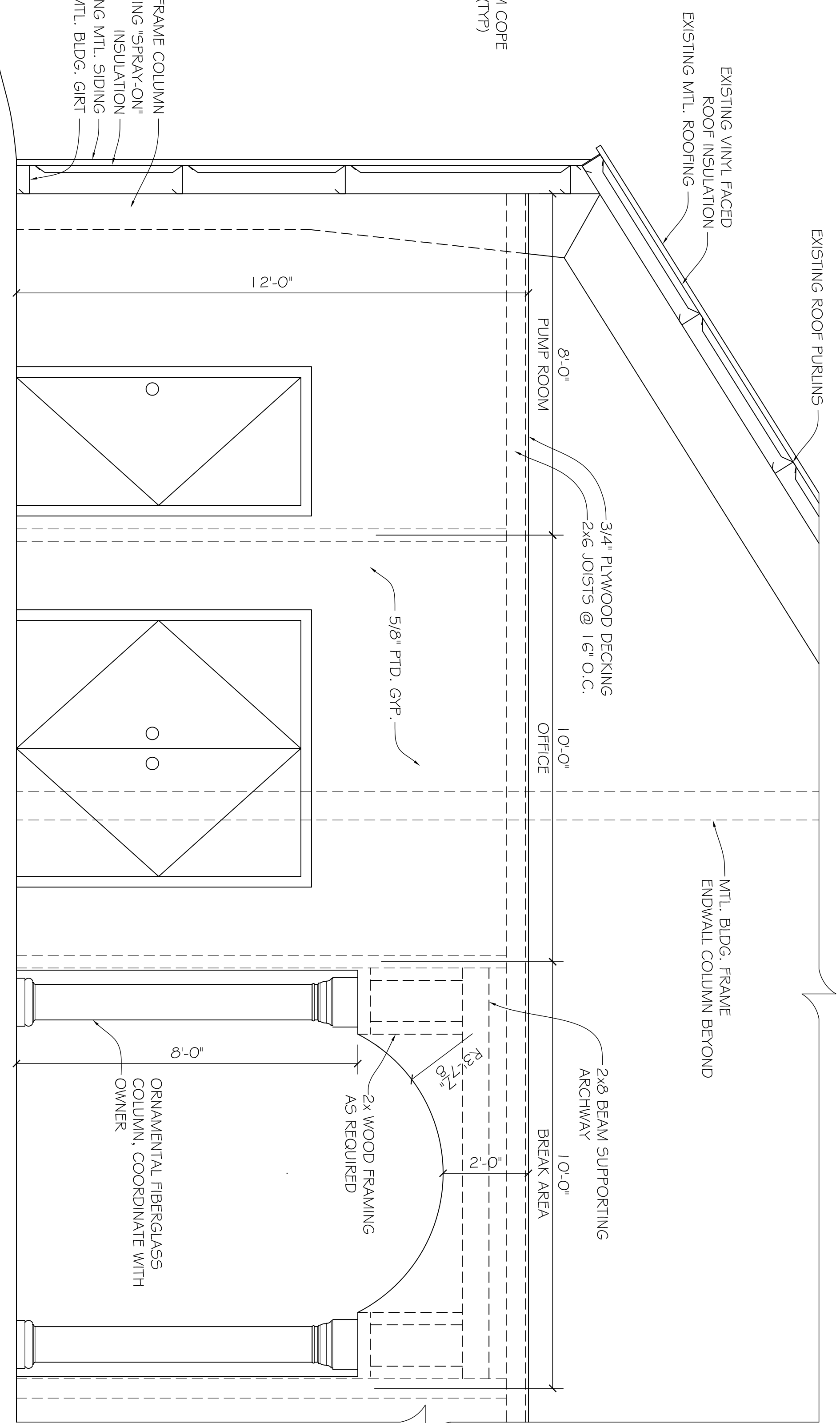
AC PLATFORM SIDE ELEVATION

SCALE: 1/2" = 1'-0"



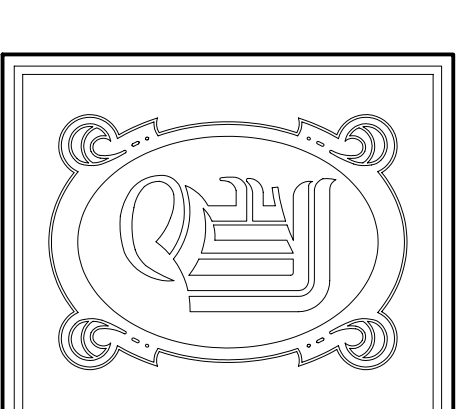
AC PLATFORM PLAN VIEW

SCALE: 1/2" = 1'-0"



PARTIAL INTERIOR ELEVATION

SCALE: 1/2" = 1'-0"



**DAMMON**  
ENGINEERING, INC.

CHIEF ENGINEER  
EWMETT  
DAMMON, P.E.  
CHIEF ARCHITECT  
ROBERT  
WILTSE

1095 FLORIDA AVENUE  
SLIDELL, LA, 70456  
OFFICE: 985-649-5632  
FAX: 985-641-5950

WEBSITE:  
WWW.DAMMONENGINEERING.COM  
EMAIL:  
DAMMONENG@BELL.SOUTH.NET

ARCHITECTURE  
ENGINEERING  
STUDIES  
PLANNING  
INVESTIGATION  
EXPERT WITNESS

FIRE DEPT.  
RENOVATION

ELMORE  
SCHWANDT  
DEBBIE DR.  
SLIDELL, LA

STRUCTURAL  
DETAILS AND  
PARTIAL INTERIOR  
ELEVATION

REV:

SCALE: AS NOTED

JOB#: 2031

DATE: 6-3-09

SHEET 3

A-2

OF 7

EXISTING METAL BUILDING FRAMING,  
ROOFING, SIDING, MEMBERS SHALL  
REMAIN

ORNAMENTAL FIBERGLASS  
COLUMN, COORDINATE WITH  
OWNER

2x WOOD FRAMING  
AS REQUIRED

2x6 BEAM SUPPORTING  
ARCHWAY

MTL. BLDG. FRAME  
ENDWALL COLUMN BEYOND

EXISTING ROOF PURLINS

EXISTING VINYL FACED  
ROOF INSULATION

W8x13 STEEL BEAM COPE  
TO FIT AS NEEDED (TYP)

MTL. BLDG. FRAME COLUMN  
EXISTING "SPRAY-ON"  
INSULATION  
EXISTING MTL. SIDING  
EXISTING & MTL. BLDG. GIRL

10 TON PACKAGED AC UNITS, COORDINATE  
MODEL AND MFR. WITH OWNER. FIELD VERIFY  
INSTALLED EQUIP. IS SIMILAR IN DIMENSIONS  
TO UNIT SHOWN (CARRIER 50TFF012)

FLOOR GRATING SHALL BE AMICO  
WELDED "SERATED" STEEL BAR  
GRATING OR EQUAL, 2x3/4" BEARING  
BARS @ 1 3/4" O.C. WITH CROSS  
RODS 2" O.C. MAXIMUM SPAN 6'-0"

W8x13 STEEL BEAM COPE  
TO FIT AS NEEDED (TYP)

6x6x1/2" STEEL PLATE COLUMN CAP  
TO FIT AS NEEDED (TYP)

48" L 3x3x1/4" STEEL ANGLE WELD AT 45° TO  
W8x13 FRAMING MEMBERS

12x12x1/2" STEEL BASE PLATE

3/4" Ø ANCHOR BOLT W/ 2" LEG AND MIN. 1 8"  
EMBED. (4) PER BASE PLATE (TYP)

#4 REBAR E.W. TAB

FLOOR GRATING SHALL BE AMICO  
WELDED "SERATED" STEEL BAR  
GRATING OR EQUAL, 2x3/4" BEARING  
BARS @ 1 3/4" O.C. WITH CROSS  
RODS 2" O.C. MAXIMUM SPAN 6'-0"