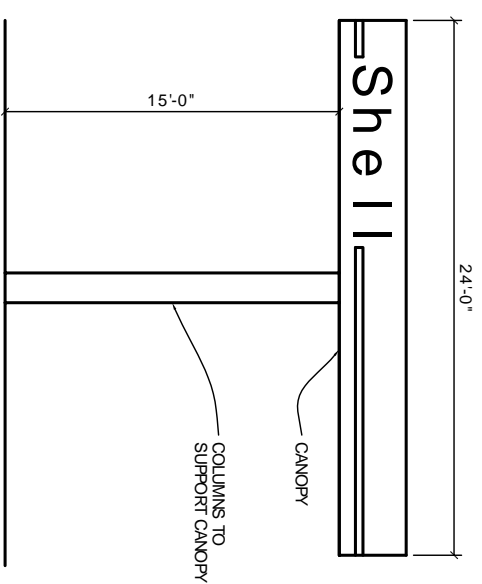
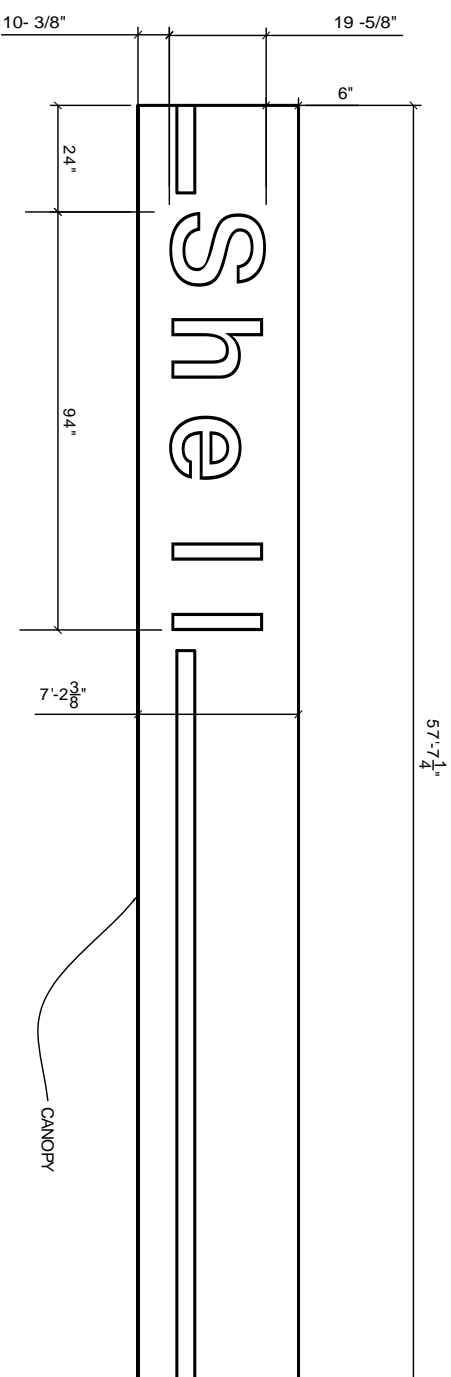


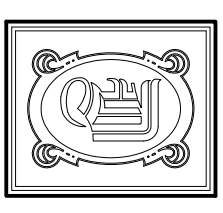
FACING GENTILLY
SCALE 1/4" = 1'-0"



LOOKING TOWARDS PARIS
SCALE 1/4" = 1'-0"



LETTERING SCALED UP
SCALE N.T.S.



DAMMON
ENGINEERING, INC.
CHIEF ENGINEER
EMMETT
DAMMON, P. E.
CHIEF ARCHITECT
ROBERT
WILTSE

1095 FLORIDA AVENUE
SUITE 111, LA 70458
OFFICE: 985-649-5832
FAX: 985-641-5950

WWW.DAMMONENGINEERING.COM
EMAIL:
DAMMON@DELLSOUTH.NET

ARCHITECTURE
ENGINEERING
STUDIES
PLANNING
INVESTIGATION
EXPERT WITNESS

2035 GENTILLY
BOULEVARD
NEW ORLEANS
LOUISIANA

NEW
METAL
CANOPY
WITH
LETTERING

REV:

SCALE: AS NOTED

JOB#: 2049

DATE: 09-08-09

SHEET

OF

THESE PLANS HAVE BEEN PREPARED UNDER MY DIRECT SUPERVISION, AND TO THE BEST OF MY KNOWLEDGE AND BELIEF, COMPLY WITH ALL THE BUILDING CODES OF THE CITY OF NEW ORLEANS, AS WELL AS STATE AND NATIONAL CODES. I AM NOT SUPERVISING THE WORK.

ROBERT WILTSE