

**DAMMON ENGINEERING, INC.**

CHIEF ENGINEER  
EMMETT DAMMON, P.E.

CHIEF ARCHITECT  
ROBERT WILTSE

1095 FLORIDA AVENUE  
SLIDELL, LA. 70458  
OFFICE: 985-649-5832  
FAX: 985-641-5950

WEBSITE:  
WWW.DAMMONENGINEERING.COM

EMAIL:  
DAMMONENG@BELLSOUTH.NET

ARCHITECTURE  
ENGINEERING  
STUDIES  
PLANNING  
INVESTIGATION  
EXPERT WITNESS

GREEN-STATEFARM  
RETAIL COMPLEX  
383 GAUSE  
BLVD., WEST  
SLIDELL, LA

SITE  
UTILITIES &  
ILLUMINATION  
PLAN

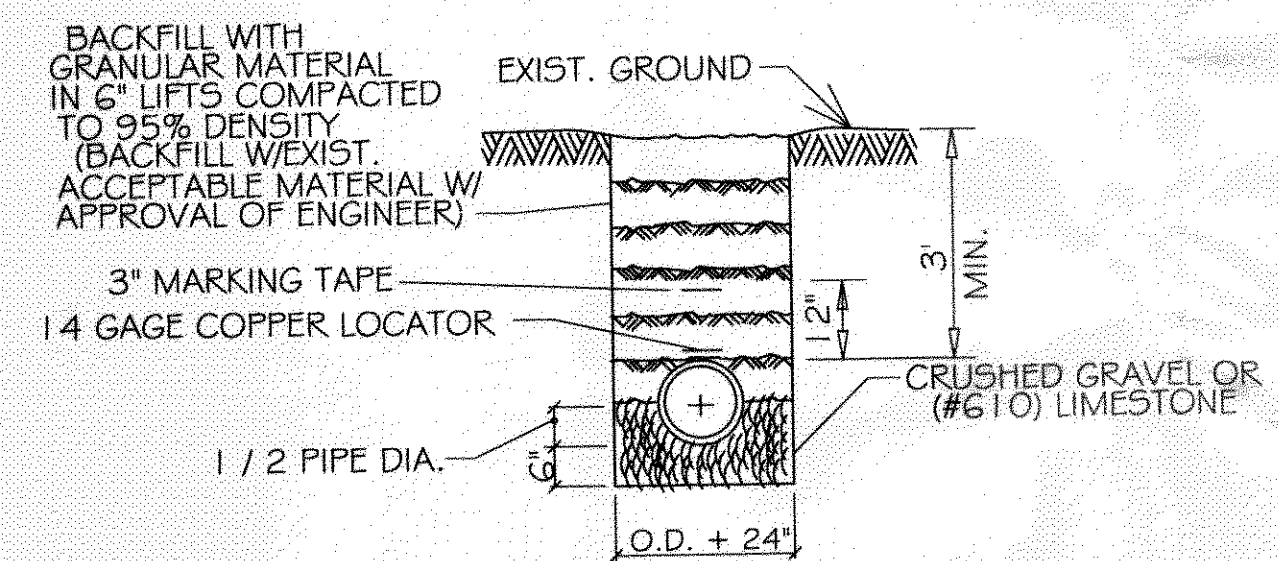
*James Wiltse*

REV: \_\_\_\_\_  
SCALE: AS NOTED  
JOB#: 2057  
DATE: 04-29-10  
SHEET 3

C-2  
OF 19

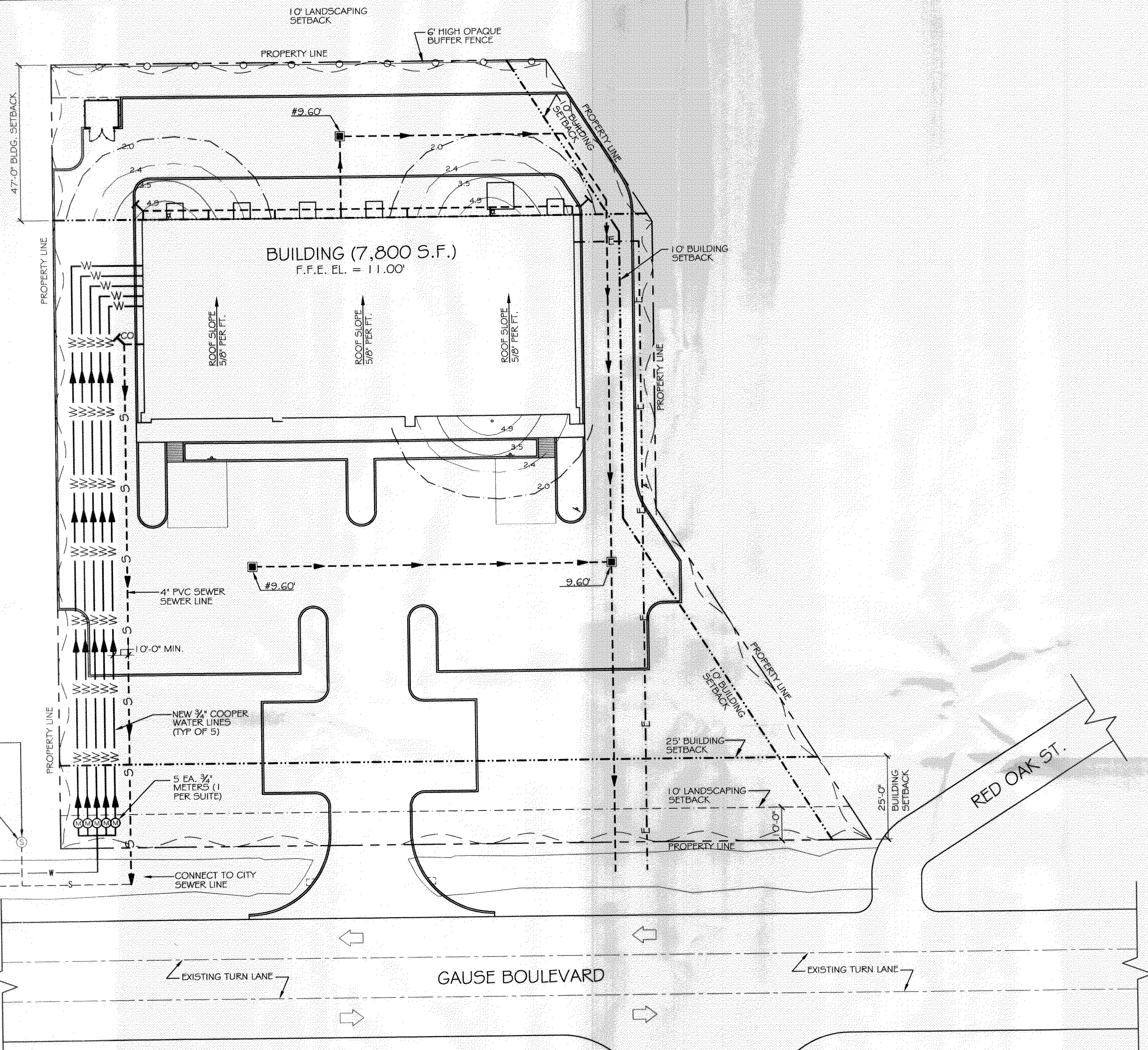
**LEGEND**

- PROPERTY LINE
- BUILDING SETBACK
- LANDSCAPING SETBACK MINIMUM AND BUFFER ZONE LIMITS AT REAR
- NEW BUILDING OUTLINE
- W --- NEW WATER LINE
- S --- NEW SEWER LINE
- E --- NEW POWER LINE
- - - SILT FENCING DETAIL
- NEW DRAIN LINE

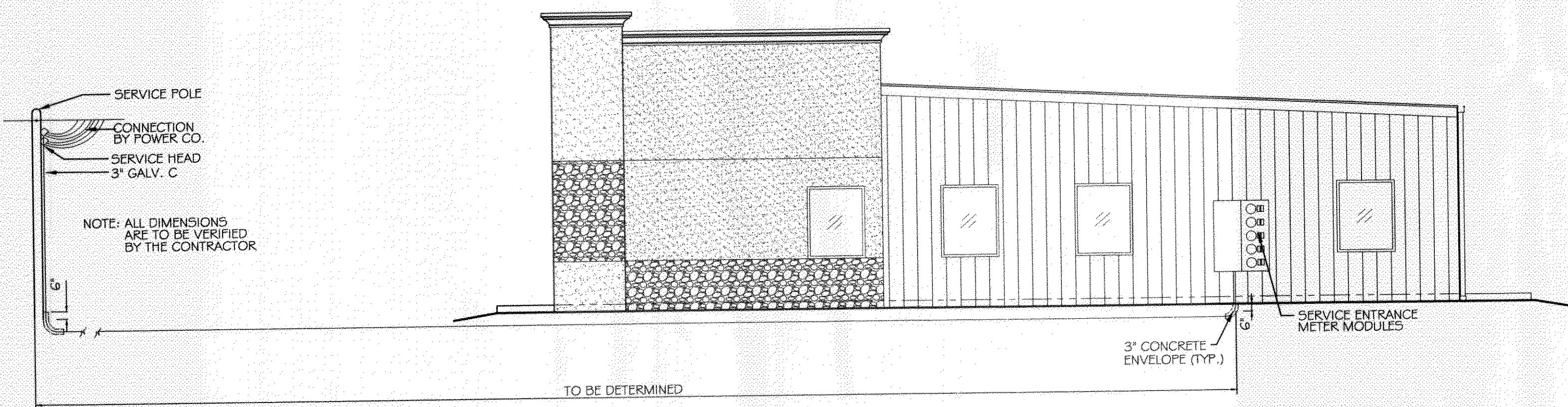


A MIN. 10 FT. HORIZONTAL AND 18\"/>

**PIPE BEDDING DETAIL FOR SEWER & WATER LINE**  
N.T.S.



**SITE UTILITIES & ILLUMINATION PLAN**  
SCALE: 1\"/>



**ELECTRICAL SERVICE DETAIL**  
N.T.S.

380899  
REVIEWED FOR  
STATE FIRE MARSHAL  
AS PER REVIEW LETTER  
BY: JAMES WILTSE, ARCHITECT