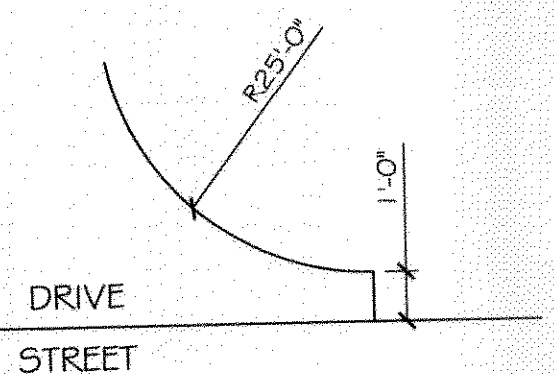
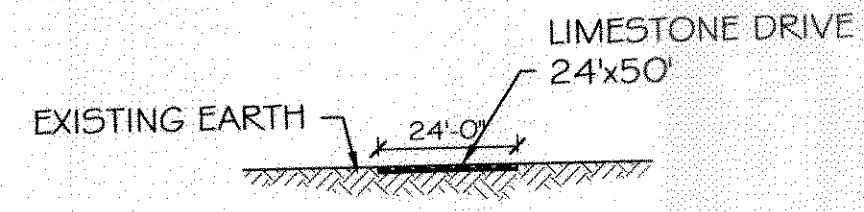


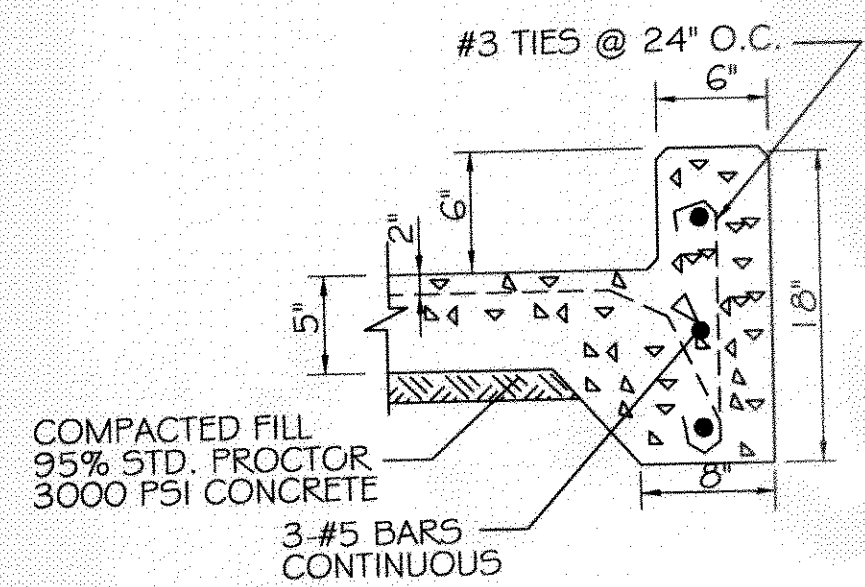
TYPICAL ENTRANCE DETAIL
N.T.S.



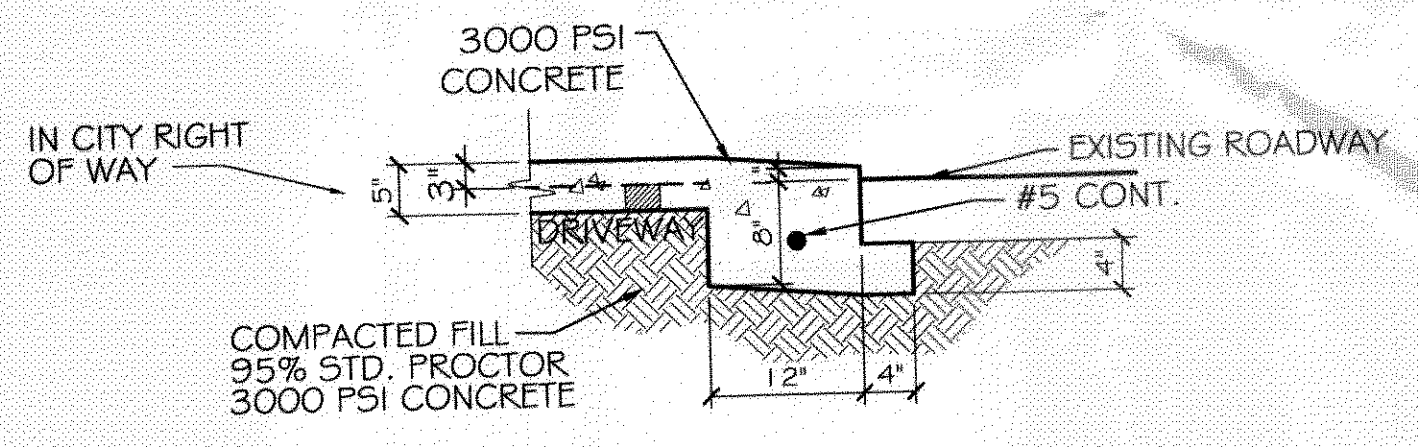
TEMP. ENTRANCE DETAIL
N.T.S.



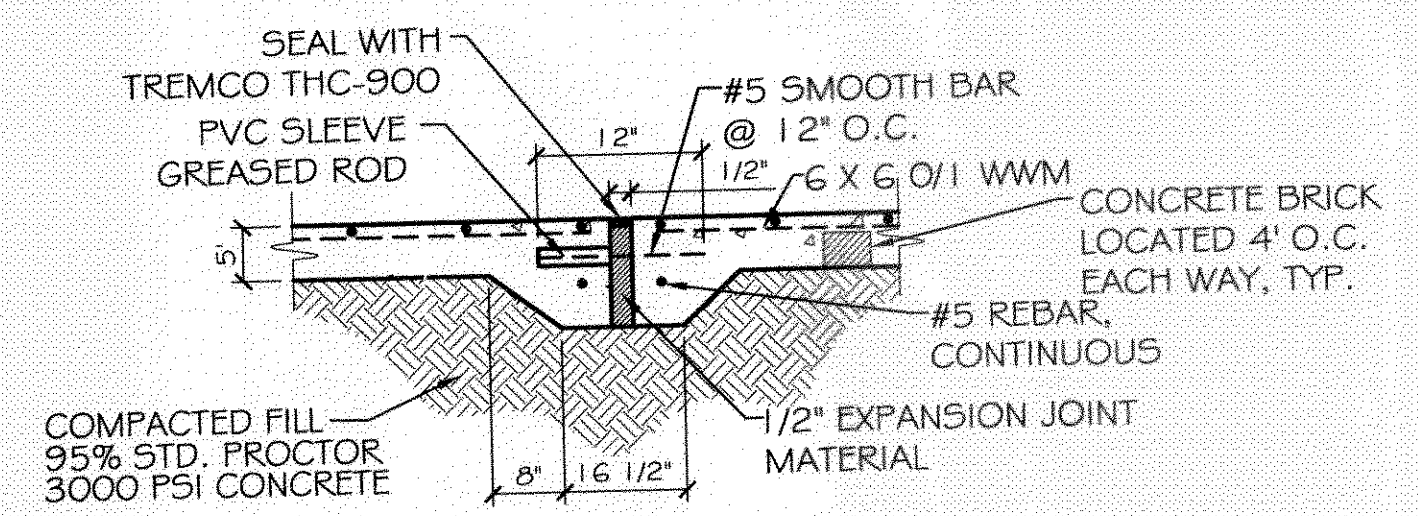
TYPICAL CURB DETAIL
N. T. S.



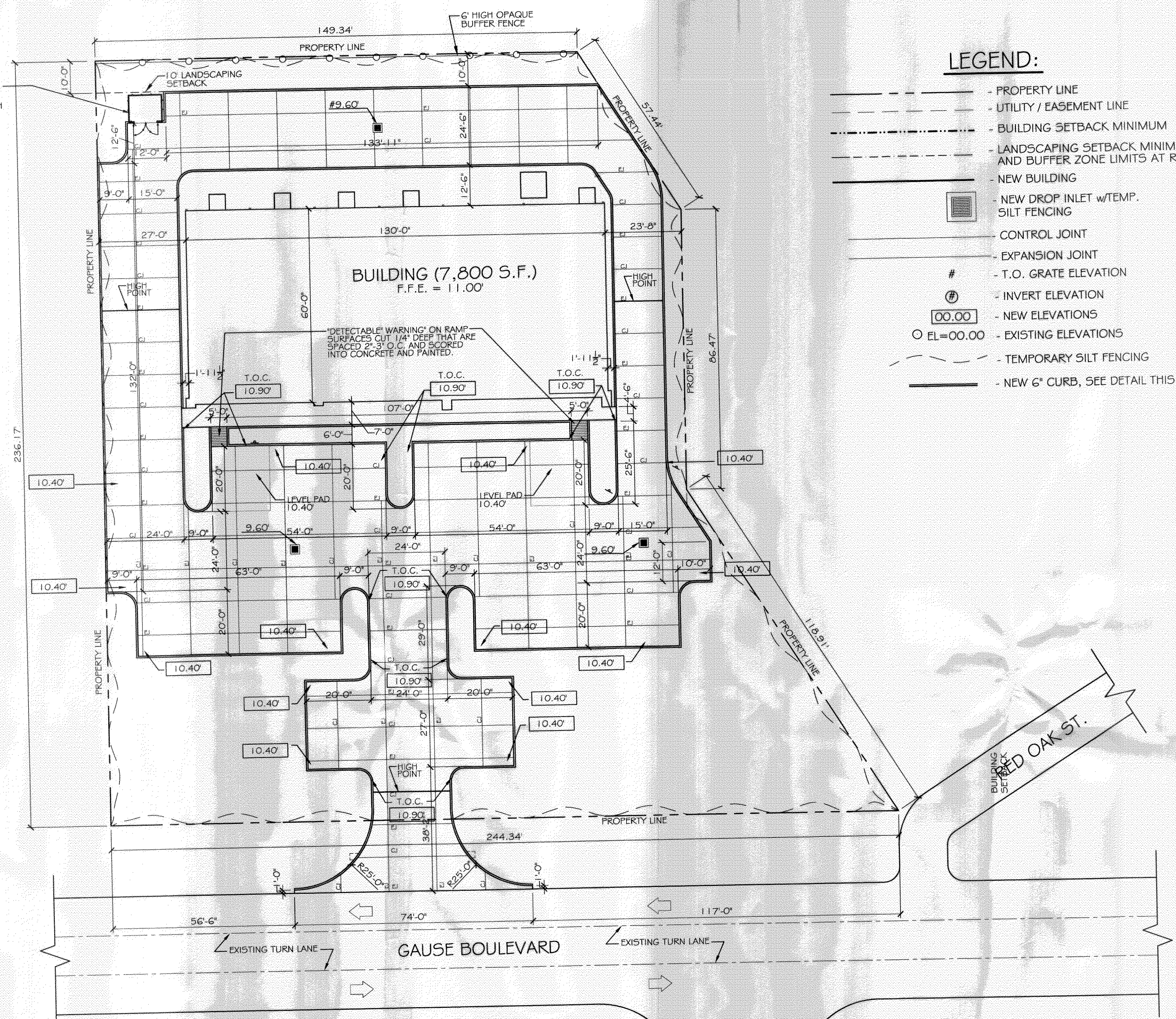
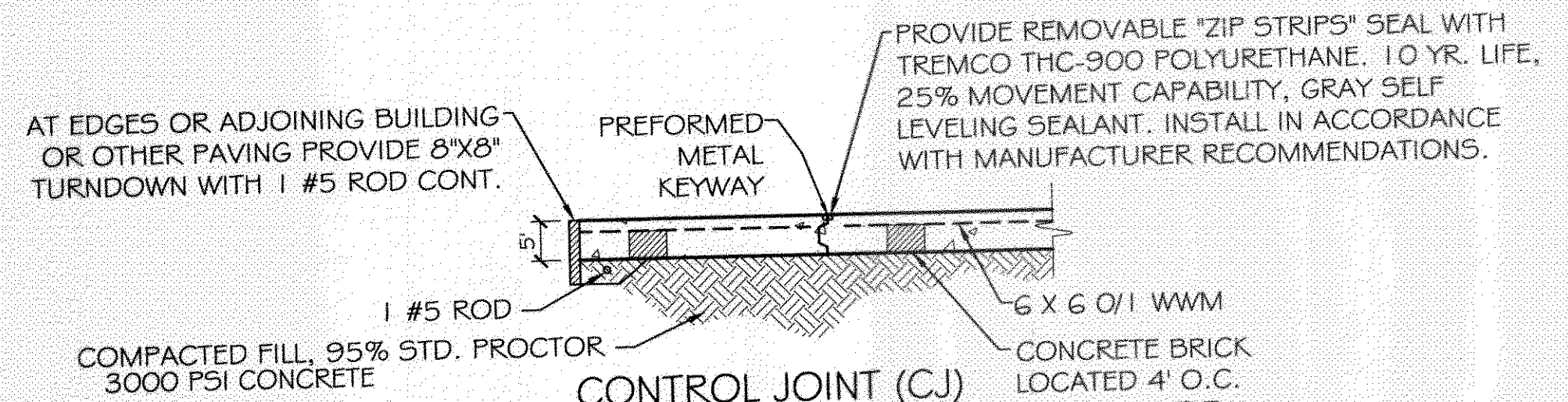
DRIVEWAY SECTION (DS)
N. T. S.



EXPANSION JOINT (EJ)
N. T. S.

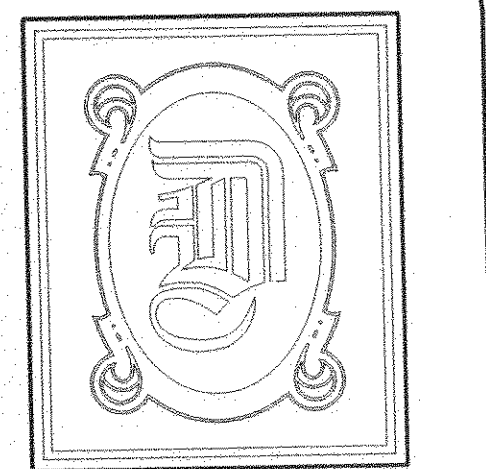


CONTROL JOINT (CJ)
N. T. S.



- LEGEND:**
- - - - - PROPERTY LINE
 - - - - - UTILITY / EASEMENT LINE
 - - - - - BUILDING SETBACK MINIMUM
 - - - - - LANDSCAPING SETBACK MINIMUM AND BUFFER ZONE LIMITS AT REAR
 - - - - - NEW BUILDING
 - NEW DROP INLET w/TEMP. SILT FENCING
 - - - - - CONTROL JOINT
 - - - - - EXPANSION JOINT
 - # T.O. GRATE ELEVATION
 - ⊕ INVERT ELEVATION
 - 00.00 NEW ELEVATIONS
 - EL=00.00 EXISTING ELEVATIONS
 - - - - - TEMPORARY SILT FENCING
 - - - - - NEW 6" CURB, SEE DETAIL THIS SHEET

SITE PAVING PLAN
SCALE: 1"=20'



DAMMON ENGINEERING, INC.

CHIEF ENGINEER
EMMETT
DAMMON, P.E.

CHIEF ARCHITECT
ROBERT
WILTSE

1095 FLORIDA AVENUE
SLIDELL, LA. 70458
OFFICE: 985-649-5832
FAX: 985-641-5950

WEBSITE:
WWW.DAMMONENGINEERING.COM

EMAIL:
DAMMONENG@BELLSOUTH.NET

- ARCHITECTURE
- ENGINEERING
- STUDIES
- PLANNING
- INVESTIGATION
- EXPERT WITNESS

GREEN-STATEFARM
RETAIL COMPLEX
383 GAUSE
BLVD., WEST
SLIDELL, LA

SITE
PAVING
PLAN

REV:

SCALE: AS NOTED

JOB#: 2057

DATE: 04-29-10

SHEET 5

C-4

OF 19

380899
REVIEWED FOR
STATE FIRE MARSHAL
AS PER REVIEW LETTER
BY: JAMES WHITE, ARCHITECT.
James White