

**DAMMON ENGINEERING, INC.**

CHIEF ENGINEER  
EMMETT DAMMON, P.E.

CHIEF ARCHITECT  
ROBERT WILTSE

1095 FLORIDA AVENUE  
SLIDELL, LA. 70458  
OFFICE: 985-649-5832  
FAX: 985-641-5950

WEBSITE:  
WWW.DAMMONENGINEERING.COM

EMAIL:  
DAMMONENG@BELLSOUTH.NET

ARCHITECTURE  
ENGINEERING  
STUDIES  
PLANNING  
INVESTIGATION  
EXPERT WITNESS

GREEN-STATEFARM  
RETAIL COMPLEX  
383 GAUSE  
BLVD., WEST  
SLIDELL, LA

ELECTRICAL  
LIGHTING PLAN

REV:

SCALE: AS NOTED

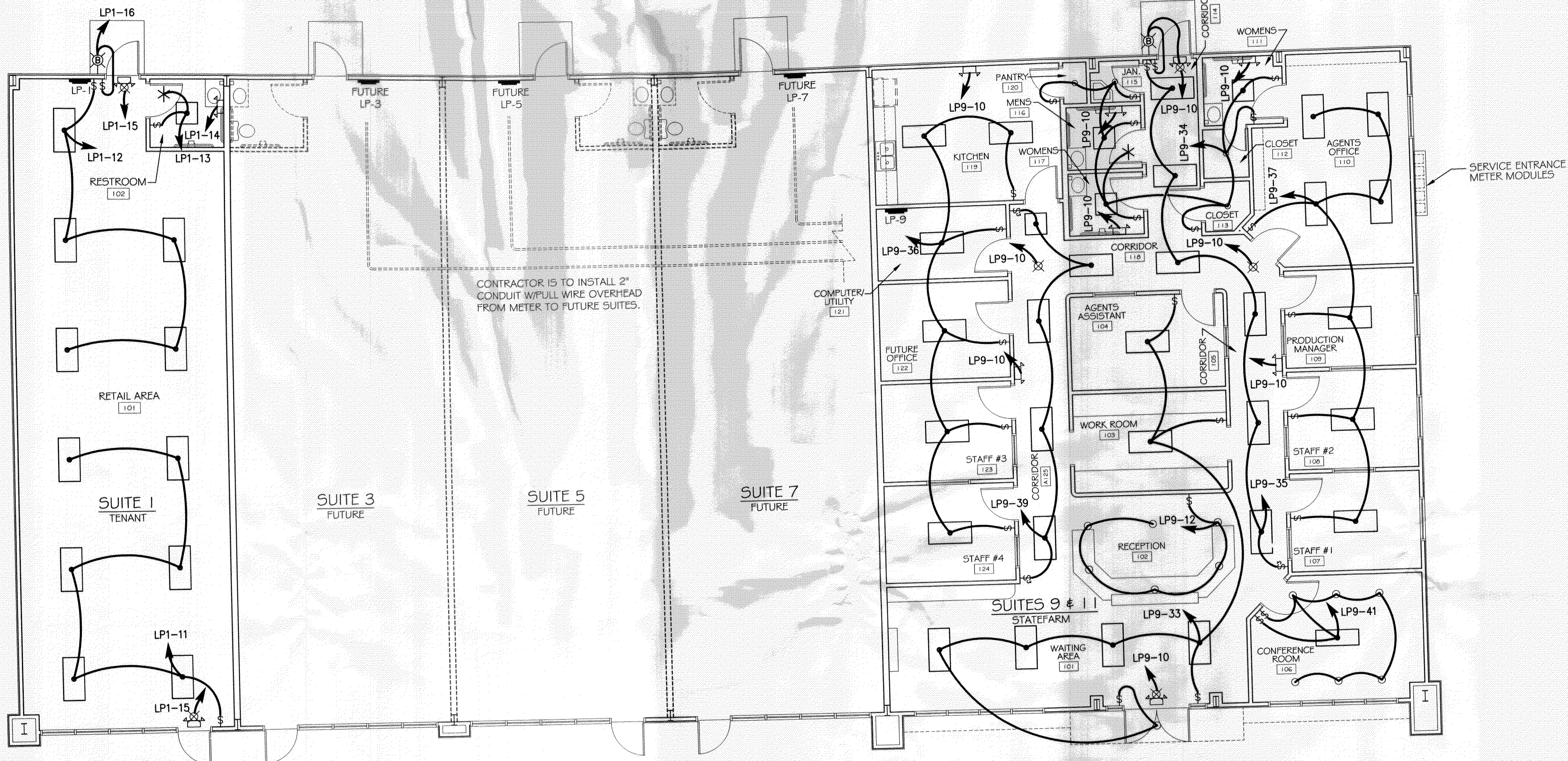
JOB#: 2057

DATE: 04-29-10

SHEET 17

E-2

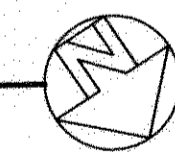
OF 19



CONTRACTOR IS TO INSTALL 2" CONDUIT W/PULL WIRE OVERHEAD FROM METER TO FUTURE SUITES.

**ELECTRICAL LIGHTING PLAN**

SCALE: 3/16"=1'



**LEGEND**

- - 2x4' FLUORESCENT LIGHT (1 28W)
- - CONFERENCE ROOM LIGHT FIXTURE (1 28W)
- - 2x2' FLUORESCENT LIGHT (1 00W)
- - STANDARD BULB FIXTURE (1 00W)
- - CAN LIGHT (90W)
- ⚡ - EMERGENCY LIGHT W/ 90 MIN. BATTERY BACKUP (1 2W)
- ⊗ - EXTERIOR WATERPROOF WALL MOUNTED LIGHT W/ 90 MIN. BATTERY BACKUP (1 00W)
- ⊗ - LOW LEVEL MOUNTED EXIT LIGHT/SIGN W/90 MIN. BATTERY BACK-UP (1 0W)
- ⊗ - EXIT/EMERGENCY LIGHT COMBO W/ 90 MIN. BATTERY BACKUP (1 2W)
- ⚡ - SWITCH
- ⚡ - 3-WAY SWITCH
- ⚡ - POWER PANEL
- \* - TO LIGHT FIXTURE OVER HVAC ABOVE (STD. BULB 1 00W)

**CLECO Power LLC - Electrical Load Summary**

Project Name: Green-Statefarm Retail Complex  
Project Address: Gause Boulevard  
City / Town: Slidell, Louisiana

Intended Use: Retail & Business Office Complex

Requested Service: 120/240 Volts 1 Phase 3 Wires

Service Entrance Size: 800 Amps

HVAC Tonnage: 14.00 Tons (Suite 1)

Largest Motor: N/A HP (Note: Motors above 20 hp may require reduced voltage starting and are never recommended for use with 120/240V, 3 φ, 4W services.)

Total Building Square Footage: 7,800 Square Feet

Individual Unit Square Footage: 1,250 Square Feet (Multiple Occupancy)

Individual Unit Designation: N/A (Multiple Occupancy)

| LOAD SOURCE                         | 1 φ - kVA | 3 φ - kVA | or | 1 φ - kW | 3 φ - kW |
|-------------------------------------|-----------|-----------|----|----------|----------|
| Building Lighting                   | 10,170    | -         | or | -        | -        |
| Electric Water Heating              | 14,400    | -         | or | -        | -        |
| Heat Pumps                          | -         | -         | or | -        | -        |
| Supplemental Heat System            | -         | -         | or | -        | -        |
| Air Conditioning Condensing Units   | 24,800    | -         | or | -        | -        |
| Electrical Heating (Primary) - AHUs | 34,600    | -         | or | -        | -        |
| Cooking                             | -         | -         | or | -        | -        |
| Refrigeration                       | 1,600     | -         | or | -        | -        |
| Receptacles (Standard)              | 12,800    | -         | or | -        | -        |
| Receptacles (Computer)              | 10,980    | -         | or | -        | -        |
| Total Motors (Exclude HVAC)         | -         | -         | or | -        | -        |
| Parking Lot / Exterior Lighting     | 1,630     | -         | or | -        | -        |
| Miscellaneous - Junction Boxes      | -         | -         | or | -        | -        |
| Other (Specify)                     | -         | -         | or | -        | -        |

380899  
REVIEWED FOR  
STATE FIRE MARSHAL  
AS PER REVIEW LETTER  
BY: JAMES WAITE, ARCHITECT

Robert Wiltse