

PANEL: LP-9  
LOCATION: SUITE 9 COMPUTER/UTILITY ROOM 121  
FEEDER SOURCE: CLECO

PANEL: 120/240V, 225A 1Ø, 3W, MLO;  
FLUSH MOUNTED; W/225A MAIN BRKR;  
W/EQUIPMENT GND BAR; 22,000 AIC

CKT. NO.	THHN WIRE SIZE	LOAD DESCRIPTION LOCATION	BREAKER		LOAD (VA)	A <sub>B</sub>	B <sub>B</sub>	LOAD (VA)	BREAKER		LOAD DESCRIPTION LOCATION	THHN WIRE SIZE	CKT. NO.
			AMP	POLE					POLE	AMP			
1	#6	AHU #1 7.5 KW	45	2	5300		5300	2	45	AHU #2 7.5 KW	#6	2	
3	#6	A/C COMPRESSOR #1 5 TON	60	2	4500		4500	2	60	A/C COMPRESSOR #2 5 TON	#6	6	
5	#6	A/C COMPRESSOR #1 5 TON	60	2	4500		4500	2	60	A/C COMPRESSOR #2 5 TON	#6	8	
7	#8	WATER HEATER 20 GALLON	30	2	3600		1800	1	20	EMERGENCY LIGHTS	#12	10	
9	#8	WATER HEATER 20 GALLON	30	2	3600		1800	1	20	RECEPTION 102 CAN LIGHTS & CONFERENCE ROOM 106 LIGHTS	#12	12	
11	#12	WAITING AREA 101 RECEPTACLES	20	1	960		1120	1	20	RECEPTION 102, WORK ROOM 103, AND AGENTS ASSISTANT 104 RECEPTACLES	#12	14	
13	#12	CORRIDORS 105, 114, 118, 125, AND HVAC DECK RECEPTACLES	20	1	1120		1120	1	20	CONFERENCE ROOM 106 AND STAFF #1 ROOM 107 RECEPTACLES	#12	16	
15	#12	STAFF #2 ROOM 108 AND PRODUCTION MANAGER 109 RECEPTACLES	20	1	1120		960	1	20	PRODUCTION MANAGER 109 AND AGENT'S OFFICE 110 RECEPTACLES	#12	18	
17	#12	WOMENS 111, MENS 116, WOMENS 117, KITCHEN 119, & EXL. OFF. RECEPTACLES	20	1	960		1600	1	20	REFRIGERATOR RECEPTACLE	#12	20	
19	#12	KITCHEN 119 AND COMPUTER/UTILITY 121 RECEPTACLES	20	1	1120		1120	1	20	COMPUTER/UTILITY 121, FUTURE OFFICE 122, & STAFF #3 123 RECEPTACLES	#12	22	
21	#12	STAFF #3 ROOM 123 AND STAFF #4 ROOM 124 RECEPTACLES	20	1	1120		1200	1	20	AGENT - 110 COMPUTER	#12	24	
23	#12	RECEPTION 102 COMPUTERS	20	1	1200		1200	1	20	123 & 124 COMPUTER	#12	26	
25	#12	102 & 103 COMPUTER	20	1	1200		800	1	20	122 COMPUTER	#12	28	
27	#12	103 & 104 COMPUTER	20	1	1200		1800	1	20	COMPUTER ROOM SERVER(S) 121	#12	30	
29	#12	106 & 107 COMPUTER	20	1	1200		1200	1	20	108 & 109 COMPUTER	#12	32	
31	#12	WAITING AREA 101, WORK ROOM 103, AND AGENT'S ASSISTANT 104 LIGHTS	20	1	1200		800	1	20	ROOMS 111, 112, 113, 115, 116, 117, & 120 LIGHTS	#12	34	
33	#12	CORRIDOR 105 AND CORRIDOR 114 LIGHTS	20	1	1080		1080	1	20	KITCHEN 119, COMPUTER/UTILITY 121, OFFICE 122, STAFFS 123 & 124 LIGHTS	#12	36	
35	#12	STAFF 107 & 108, PRODUCTION MANAGER 109, & AGENT'S OFFICE 110 LIGHTS	20	1	1260		-	1	20	SPARE	-	38	
37	#12	CORRIDOR 118 AND CORRIDOR 125 LIGHTS	20	1	900		-	1	20	SPARE	-	40	
39	#12	SPARE	20	1	-		-	1	20	SPARE	-	42	
41	-	SPARE	20	1	-		-	1	20	SPARE	-	42	
					TOTAL CONNECTED LOAD (VA)=78,490								
					A <sub>B</sub> =39,660		B <sub>B</sub> =38,830						

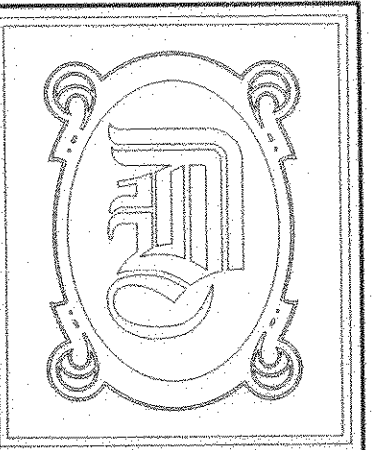
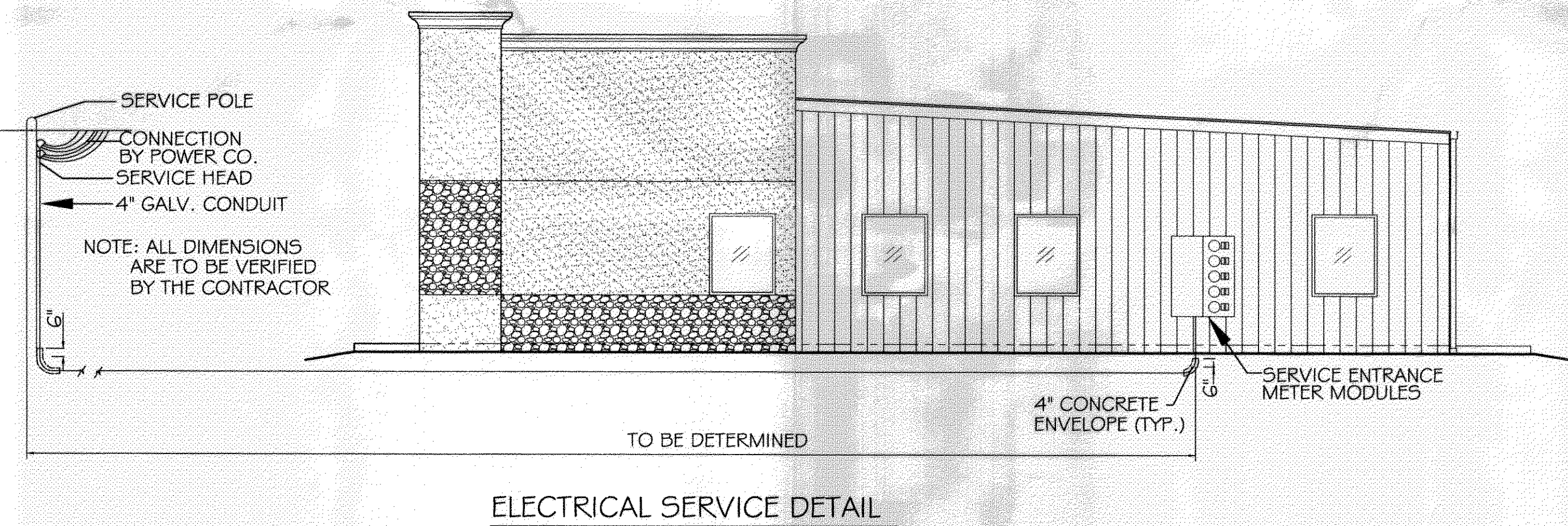
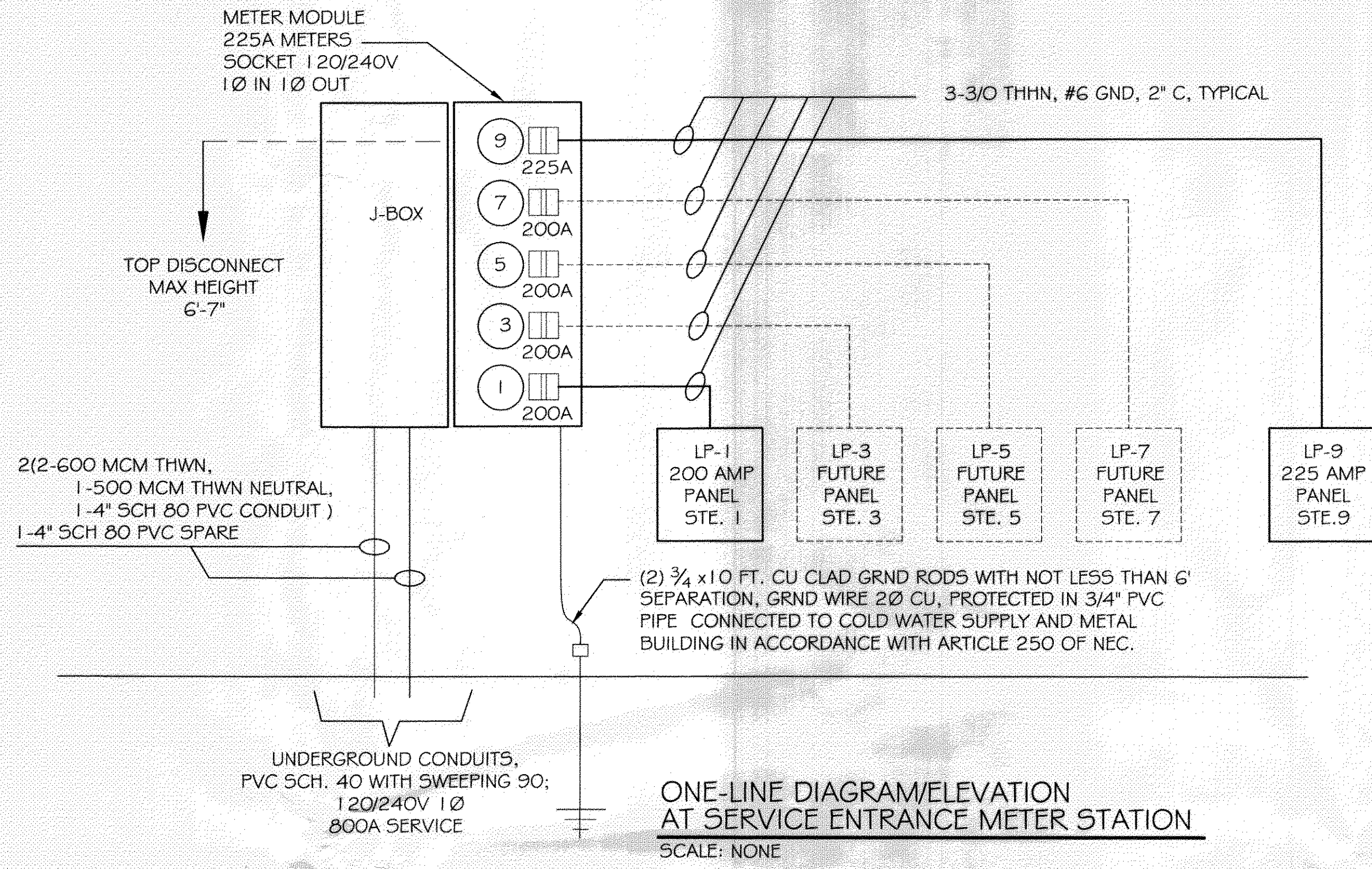
— SOLID NEUTRAL NEUTRAL WIRE (W)  
— GROUND BUS GROUND WIRE (G)

PANEL: LP-1  
LOCATION: SUITE 1 RESTROOM WALL  
FEEDER SOURCE: CLECO

PANEL: 120/240V, 200A 1Ø, 3W, MLO  
FLUSH MOUNTED; W/200A MAIN BRKR;  
W/EQUIPMENT GND BAR; 22,000 AIC

CKT. NO.	THHN WIRE SIZE	LOAD DESCRIPTION LOCATION	BREAKER		LOAD (VA)	A <sub>B</sub>	B <sub>B</sub>	LOAD (VA)	BREAKER		LOAD DESCRIPTION LOCATION	THHN WIRE SIZE	CKT. NO.
			AMP	POLE					POLE	AMP			
1	#6	AHU #3 10 KW	60	2	6700		3400	2	45	A/C COMPRESSOR #3 4 TON	#8	2	
3	#6	AHU #3 10 KW	60	2	6700		3400	2	45	A/C COMPRESSOR #3 4 TON	#8	4	
5	#8	WATER HEATER 20 GALLON	30	2	3600		1120	1	20	SUITE 1 RECEPTACLES	#12	6	
7	#8	WATER HEATER 20 GALLON	30	2	3600		1120	1	20	SUITE 1 RECEPTACLES	#12	8	
9	#12	SUITE 1 WALL AND HVAC DECK ABOVE RESTROOM RECEPTACLES	20	1	640		320	1	20	SUITE 1 RESTROOM AND EXTERIOR GFI RECEPTACLES	#12	10	
11	#12	SUITE 1 INTERIOR FLUORESCENT LIGHTS	20	1	1080		900	1	20	SUITE 1 INTERIOR FLUORESCENT LIGHTS	#12	12	
13	#12	RESTROOM & HVAC DECK LIGHTS	20	1	200		12	1	20	EMERGENCY LIGHTS	#12	14	
15	#12	EXIT/EMERGENCY LIGHT COMBO UNIT LIGHTS	20	1	24		100	1	20	EXTERIOR WALL-MOUNTED LIGHTS WITH 90 MIN. BATTERY BACKUP	#12	16	
17	#12	EXTERIOR WALL-MOUNTED WALL PACK FLOOD LIGHTS	20	1	300		-	1	20	SPARE	#12	18	
19	-	SPARE	20	1	-		-	1	20	SPARE	#12	20	
21	-	SPARE	20	1	-		-	1	20	SPARE	#12	22	
23	-	SPARE	20	1	-		-	-	-	SPARE	-	24	
25	-	SPARE	-	-	-		-	-	-	SPARE	-	26	
27	-	SPARE	-	-	-		-	-	-	SPARE	-	28	
29	-	SPARE	-	-	-		-	-	-	SPARE	-	30	
31	-	SPARE	-	-	-		-	-	-	SPARE	-	32	
33	-	SPARE	-	-	-		-	-	-	SPARE	-	34	
35	-	SPARE	-	-	-		-	-	-	SPARE	-	36	
37	-	SPARE	-	-	-		-	-	-	SPARE	-	38	
39	-	SPARE	-	-	-		-	-	-	SPARE	-	40	
41	-	SPARE	-	-	-		-	-	-	SPARE	-	42	
					TOTAL CONNECTED LOAD (VA)=32,172								
					A <sub>B</sub> =15,992		B <sub>B</sub> =16,180						

— SOLID NEUTRAL NEUTRAL WIRE (W)  
— GROUND BUS GROUND WIRE (G)



**DAMMON ENGINEERING, INC.**

CHIEF ENGINEER  
EMMETT DAMMON, P.E.

CHIEF ARCHITECT  
ROBERT WILTSE

1095 FLORIDA AVENUE  
SLIDELL, LA. 70458  
OFFICE: 985-649-5832  
FAX: 985-641-5950

WEBSITE:  
WWW.DAMMONENGINEERING.COM

EMAIL:  
DAMMONENG@BELLSOUTH.NET

- ARCHITECTURE
- ENGINEERING
- STUDIES
- PLANNING
- INVESTIGATION
- EXPERT WITNESS

GREEN-STATEFARM  
RETAIL COMPLEX  
383 GAUSE  
BLVD., WEST  
SLIDELL, LA

ELECTRICAL  
SCHEDULES  
AND  
DIAGRAMS

REV: *Robert Wiltse*

SCALE: AS NOTED

JOB#: 2057

DATE: 04-29-10

SHEET 18

E-3

OF 19

380899  
REVIEWED FOR  
STATE FIRE MARSHAL  
AS PER REVIEW LETTER  
#80  
BY: JAMES WHITE, ARCHITECT  
*James White*