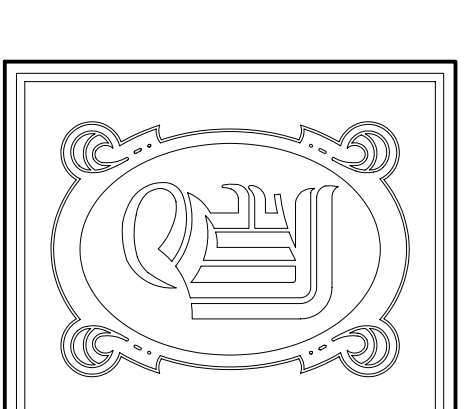


GAMBIT COMMUNICATIONS NEW GENERATOR



DAMMON
ENGINEERING, INC.

CHIEF ENGINEER
EMMETT
DAMMON, P.E.
CHIEF ARCHITECT
ROBERT
WILTSE

1095 FLORIDA AVENUE
SLIDELL, LA, 70450
OFFICE: 985-649-5632
FAX: 985-641-5950

WEBSITE:
WWW.DAMMONENGINEERING.COM
EMAIL:
DAMMONENG@BELL-SOUTH.NET

ARCHITECTURE
ENGINEERING
STUDIES
PLANNING
INVESTIGATION
EXPERT WITNESS

GAMBIT
COMMUNICATIONS

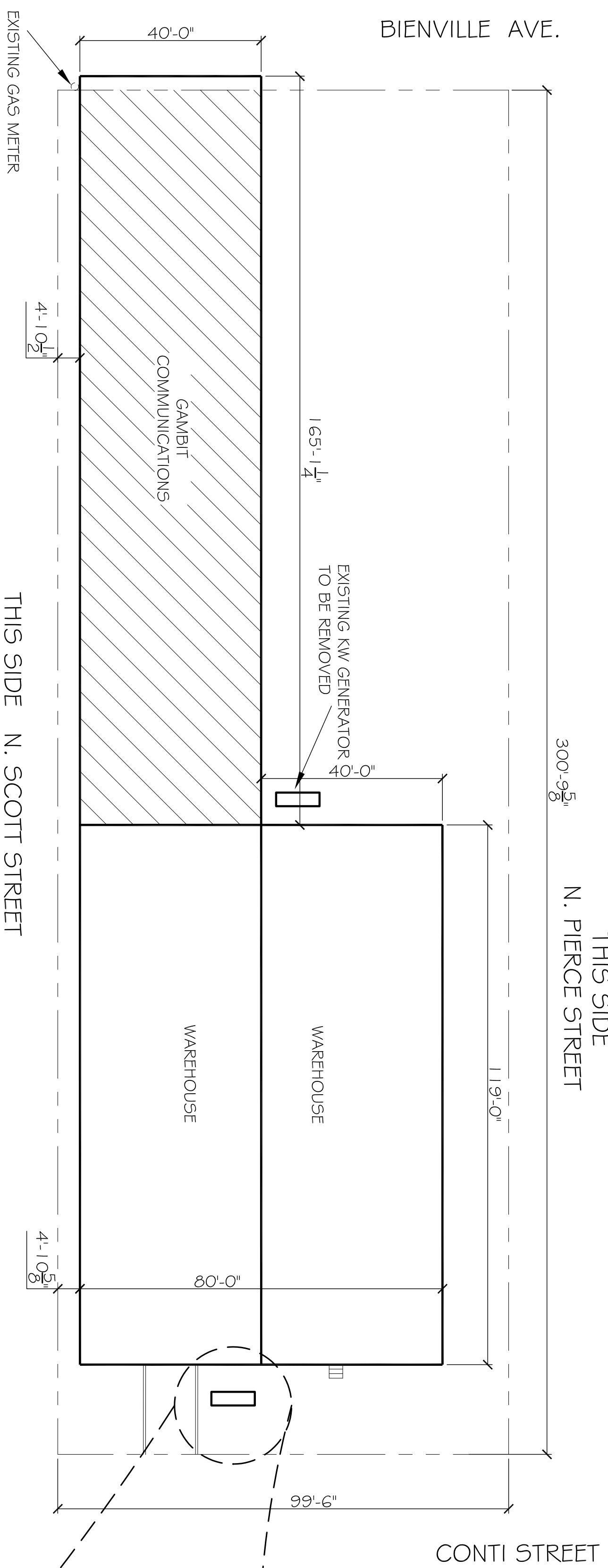
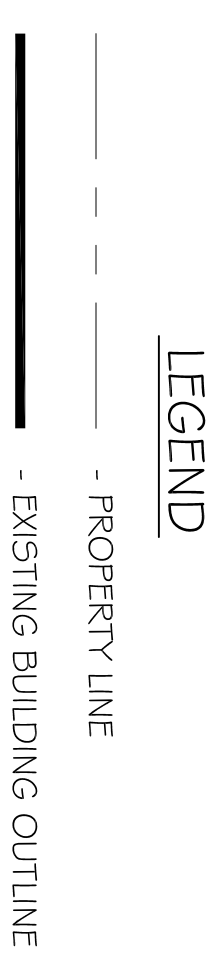
3923 BIENVILLE AVE.
NEW ORLEANS, LA

SITE PLAN

REV:
SCALE: AS NOTED
JOB#: 2080
DATE: 10-15-2010
SHEET 1

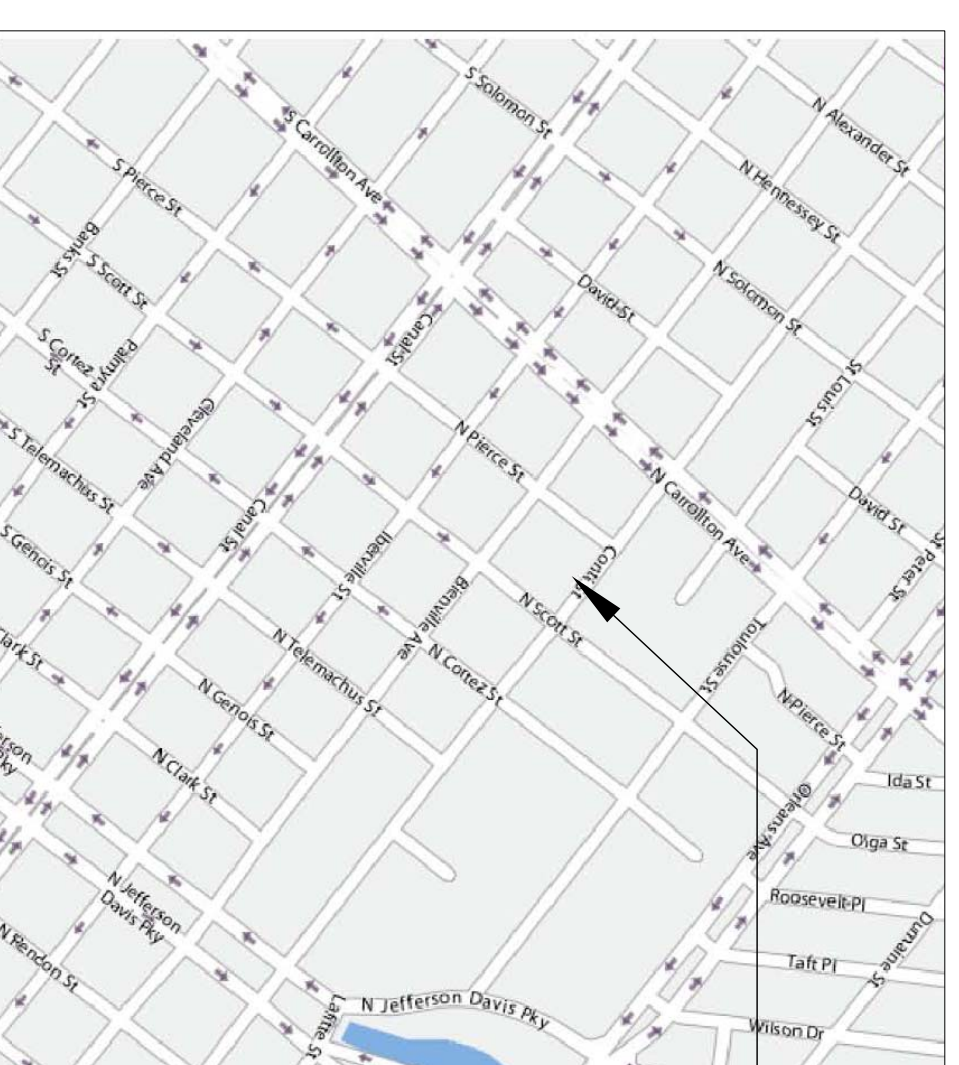
OF 3

TS-1



SITE PLAN
SCALE: N.T.S.

- GENERAL NOTES:**
1. CONTRACTOR SHALL INSTALL A COMPLETE SYSTEM TO PROVIDE CONTINUOUS POWER TO MATCH THE EXISTING ELECTRICAL SERVICE. CONTRACTOR SHALL PROVIDE A 120/240V, 30, 100 KW GENERATOR THAT OPERATES ON NATURAL GAS WITH AN AUTOMATIC POWER TRANSFER SWITCH (ATS) RATED AT 240V 400A. THE ATS SHALL BE SERVICE ENTRANCE RATED. THIS SYSTEM SHALL INCLUDE THE FOLLOWING ACCESSORIES: A PROGRAMMABLE ENGINE EXERCISER AND A BATTERY CHARGER. THE ATS SHALL HAVE A NEMA 3R ENCLOSURE.
 2. CONTRACTOR IS TO SUPPLY AND INSTALL A STEEL PLATFORM CAPABLE OF SUPPORTING THE GENERATOR SUPPLIED AND A 24" WIDE MAINTENANCE PLATFORM ON EACH SIDE CAPABLE OF SUPPORTING A 200# PERSON. PROVIDE LADDER HANDRAILS AND SAFETY CHAIN TO MEET OSHA STANDARDS. PROVIDE A CAUTION SIGN AT TOP OF LADDER.
 3. CONTRACTOR TO SECURELY ATTACH GENERATOR TO PLATFORM PER THE MANUFACTURERS GUIDELINES TO WITHSTAND 130 MPH WINDS AND THEFT.
 4. CONTRACTOR TO VERIFY ALL SITE CONDITIONS AND ELEVATIONS PRIOR TO CONSTRUCTION.
 5. MATERIALS SHALL BE NEW AND U.L. LISTED.
 6. NO WORK SHALL BE CONCEALED UNTIL APPROVED BY LOCAL INSPECTORS.
 7. CONSTRUCTION SHALL COMPLY WITH ALL CITY, STATE AND LOCAL CODES.
 8. CONTRACTOR TO GUARANTEE WORK FOR ONE YEAR.
 9. CONTRACTOR IS TO PROTECT ALL EXPOSED EXTERIOR STRUCTURAL STEEL WITH A HIGH PERFORMANCE EPOXY SYSTEM EQUAL TO SHERWIN WILLIAMS (APPLY PER MANUFACTURER'S INSTRUCTIONS).



WORK SITE.

1 2"x1 2" 4/8" STEEL PLATE AT EACH COLUMN WITH 1" MINIMUM NON-SHRINK GROUT TO LEVEL PLATE. ANCHOR EACH PLATE TO THE SLAB IS MINIMUM OF 5" THICK TO SUPPORT EACH COLUMN. IF SLAB THICKNESS IS INADEQUATE, EXCAVATE AND PROVIDE 2'x2'x1' DEEP CONCRETE FOOTINGS.

