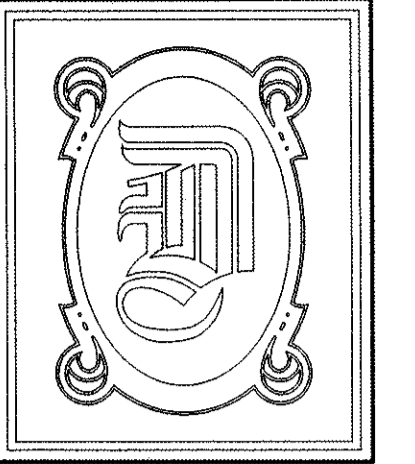


# GAMBIT COMMUNICATIONS NEW GENERATOR



**DAMMON  
ENGINEERING, INC.**

CHIEF ENGINEER  
EMMETT  
DAMMON, P.E.

CHIEF ARCHITECT  
ROBERT  
WILTSE

1095 FLORIDA AVENUE  
SLIDELL, LA. 70458  
OFFICE: 985-649-5832  
FAX: 985-641-5950

WEBSITE:  
WWW.DAMMONENGINEERING.COM

EMAIL:  
DAMMONENG@BELLSOUTH.NET

ARCHITECTURE  
ENGINEERING  
STUDIES  
PLANNING  
INVESTIGATION  
EXPERT WITNESS

GAMBIT  
COMMUNICATIONS

3923 BIENVILLE AVE.  
NEW ORLEANS, LA

SITE PLAN

REVIEWED FOR  
STATE FIRE MARSHAL  
AS PER REVIEW LETTER  
BY JOHN LAUDUN, ARCHITECT

*Robert Wiltse*

REV:

388709

SCALE: AS NOTED

JOB#: 2080

DATE: 10-15-2010

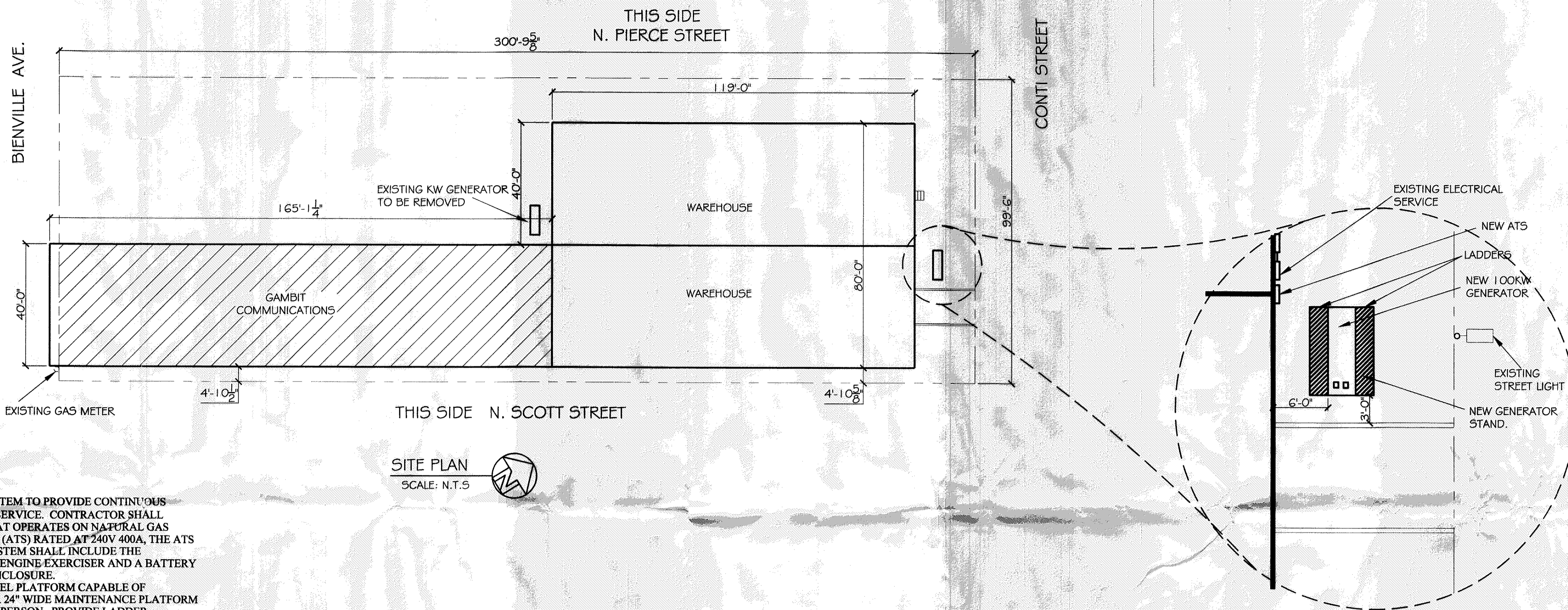
SHEET 1

TS-1

OF 3

## LEGEND

- - - - - PROPERTY LINE
- — — — — EXISTING BUILDING OUTLINE



## SITE PLAN

SCALE: N.T.S.



## GENERAL NOTES:

1. CONTRACTOR SHALL INSTALL A COMPLETE SYSTEM TO PROVIDE CONTINUOUS POWER TO MATCH THE EXISTING ELECTRICAL SERVICE. CONTRACTOR SHALL PROVIDE A 120/240V 3Ø 100 KW GENERATOR THAT OPERATES ON NATURAL GAS WITH AN AUTOMATIC POWER TRANSFER SWITCH (ATS) RATED AT 240V 400A, THE ATS SHALL BE SERVICE ENTRANCE RATED. THIS SYSTEM SHALL INCLUDE THE FOLLOWING ACCESSORIES: A PROGRAMMABLE ENGINE EXERCISER AND A BATTERY CHARGER. THE ATS SHALL HAVE A NEMA 3R ENCLOSURE.
2. CONTRACTOR IS TO SUPPLY AND INSTALL A STEEL PLATFORM CAPABLE OF SUPPORTING THE GENERATOR SUPPLIED AND A 24" WIDE MAINTENANCE PLATFORM ON EACH SIDE CAPABLE OF SUPPORTING A 200# PERSON. PROVIDE LADDER, HANDRAILS AND SAFETY CHAIN TO MEET OSHA STANDARDS. PROVIDE A CAUTION SIGN AT TOP OF LADDER.
3. CONTRACTOR TO SECURELY ATTACH GENERATOR TO PLATFORM PER THE MANUFACTURERS GUIDELINES TO WITHSTAND 130 MPH WINDS AND THEFT.
4. CONTRACTOR TO VERIFY ALL SITE CONDITIONS AND ELEVATIONS PRIOR TO CONSTRUCTION.
5. MATERIALS SHALL BE NEW AND U.L. LISTED.
6. NO WORK SHALL BE CONCEALED UNTIL APPROVED BY LOCAL INSPECTORS.
7. CONSTRUCTION SHALL COMPLY WITH ALL CITY, STATE AND LOCAL CODES.
8. CONTRACTOR TO GUARANTEE WORK FOR ONE YEAR.
9. CONTRACTOR IS TO PROTECT ALL EXPOSED EXTERIOR STRUCTURAL STEEL WITH A HIGH PERFORMANCE EPOXY SYSTEM EQUAL TO SHERWIN WILLIAMS (APPLY PER MANUFACTURE'S INSTRUCTIONS).



## VICINITY MAP

SCALE: N.T.S.

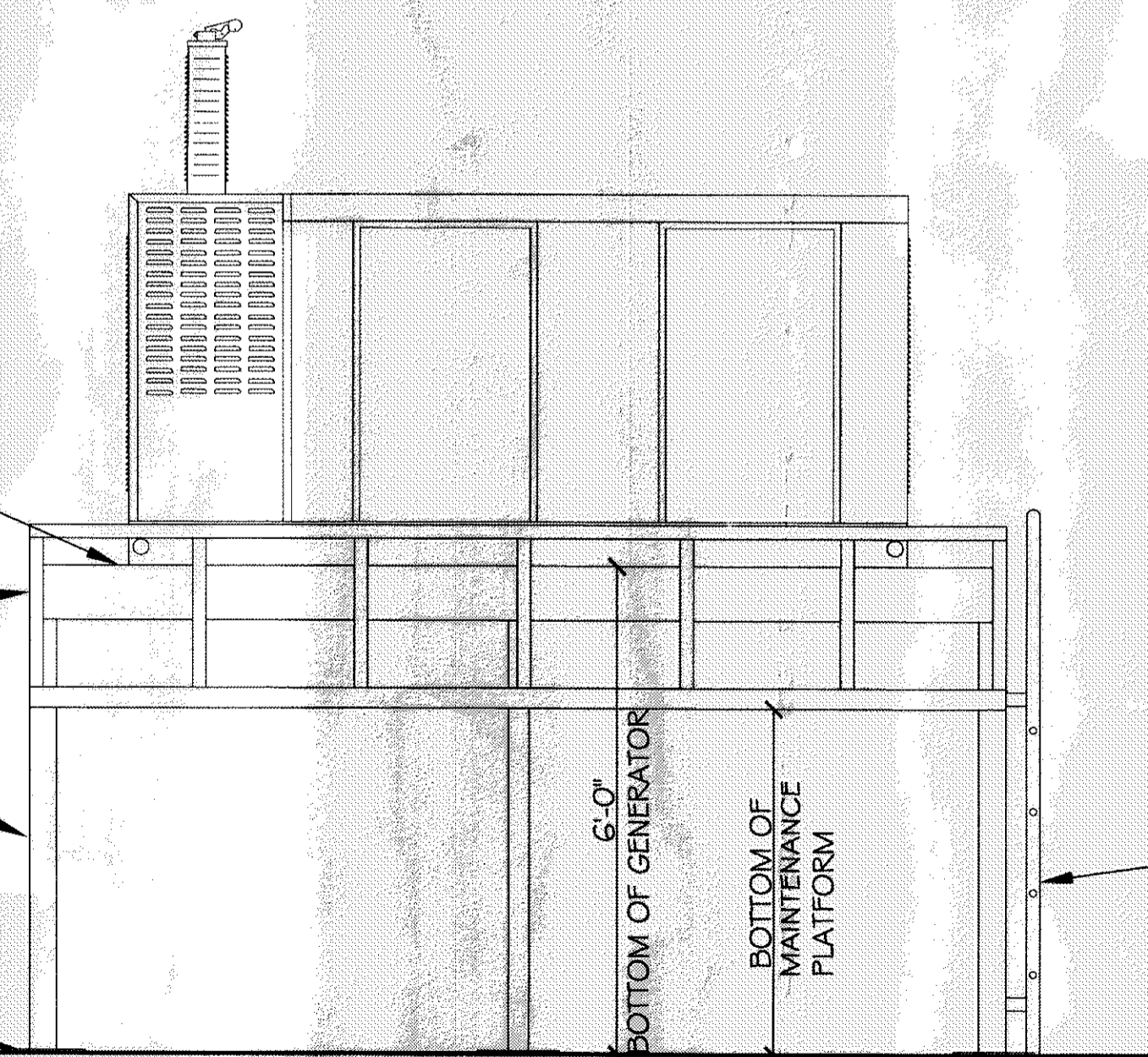


NEW STEEL PLATFORM TO SUPPORT GENERATOR

NEW RAILING OUTSIDE OF MAINTENANCE PLATFORM W/CK PLATE.

(6) STEEL COLUMNS, 3 ea SIDE.

12"x12 1/2" STEEL PLATE AT EACH COLUMN WITH 1" MINIMUM NON-SHRINK GROUT TO LEVEL PLATE. ANCHOR EACH PLATE TO CONCRETE USING (4) 1/2"x5" WEDGE ANCHOR BOLTS. ENSURE THE SLAB IS MINIMUM OF 5" THICK TO SUPPORT EACH COLUMN. IF SLAB THICKNESS IS INADEQUATE, EXCAVATE AND PROVIDE 2'x2'x1' DEEP CONCRETE FOOTINGS.



THESE PLANS HAVE BEEN PREPARED UNDER MY DIRECT SUPERVISION, AND TO THE BEST OF MY KNOWLEDGE AND BELIEF, COMPLY WITH ALL THE BUILDING CODES OF THE CITY OF NEW ORLEANS, AS WELL AS STATE AND NATIONAL CODES. I AM NOT SUPERVISING THE WORK.

*Robert Wiltse*  
ROBERT WILTSE