

DAMMON
ENGINEERING, INC.

CHIEF ENGINEER
EMMETT
DAMMON, P.E.

CHIEF ARCHITECT
ROBERT
WILTSE

1095 FLORIDA AVENUE
SLIDELL, LA. 70458
OFFICE: 985-649-5832
FAX: 985-641-5950

WEBSITE:
WWW.DAMMONENGINEERING.COM

EMAIL:
DAMMONENG@BELLFLOWERSOUTH.NET

ARCHITECTURE
ENGINEERING
STUDIES
PLANNING
INVESTIGATION
EXPERT WITNESSES

NEW
LIVING
FACILITY

STARC WEST
VIOLA ST
MANDEVILLE, LA

SITE
PLAN

REV:

SCALE: AS NOTED

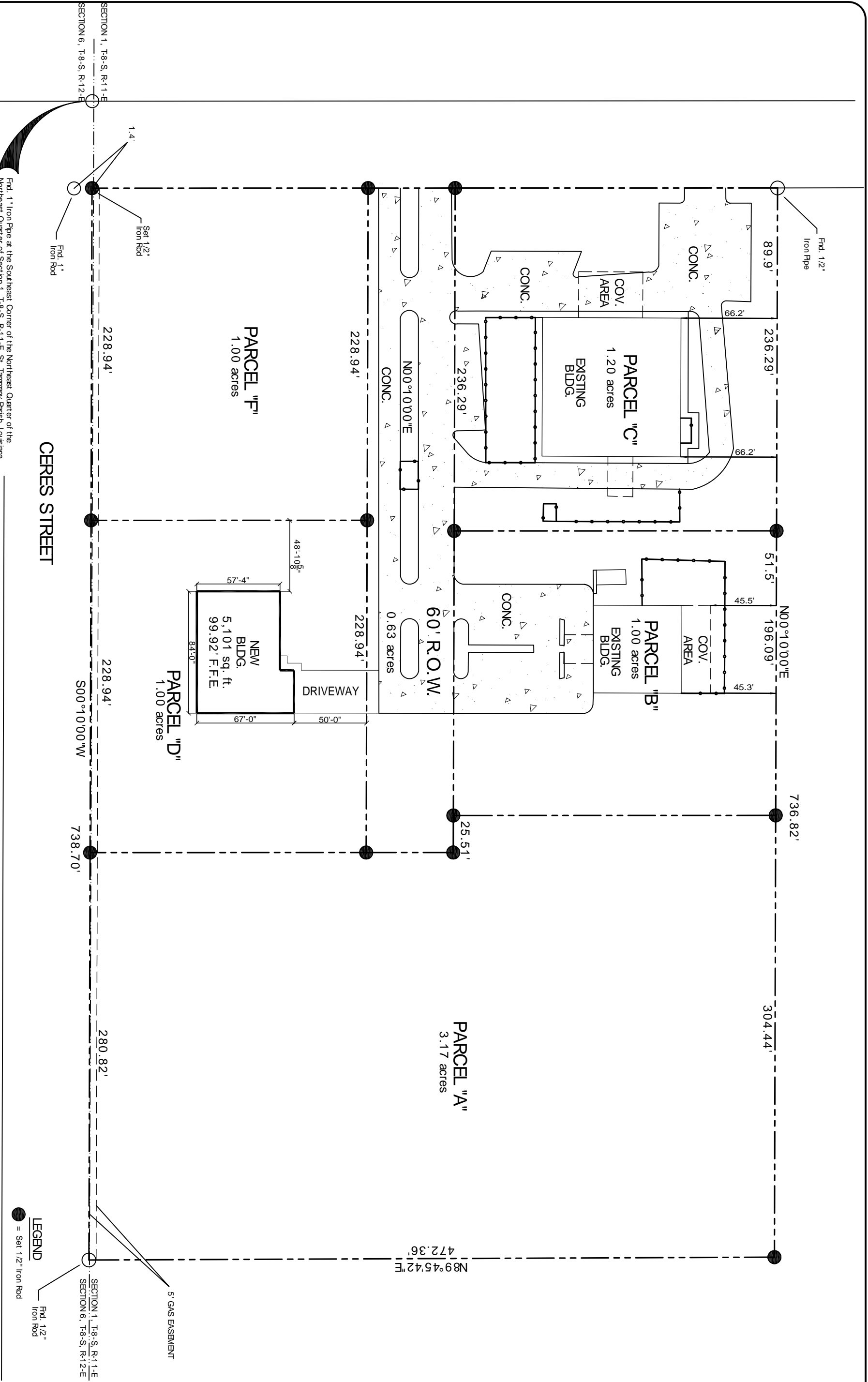
JOB#: 2081

DATE: 7-21-10

SHEET

C-2

OF



LEGEND

- PROPERTY LINE
- SETBACK
- NEW BUILDING OUTLINE
- 5' GAS EASEMENT

SITE PLAN

SCALE: 1" = 30'-0"



ZONING
RESIDENTIAL

LEGAL DESCRIPTION

A RESUBDIVISION OF AN 8.00 ACRE PARCEL OF LAND INTO PARCELS "A", "B", "C", "D", "E" & "F" AND A 60' R.O.W., SITUATED IN SECTION 1, T-8-S, R-11-S, ST. TAMMANY PARISH, LOUISIANA

LEGEND

- = Set 1/2" Iron Rod