

**DAMMON**  
ENGINEERING, INC.

CHIEF ENGINEER  
EMMETT  
DAMMON, P.E.  
CHIEF ARCHITECT  
ROBERT  
WILTSE

1095 FLORIDA AVENUE  
SUITE L, LA. 70458  
OFFICE: 985-649-5832  
FAX: 985-641-5950

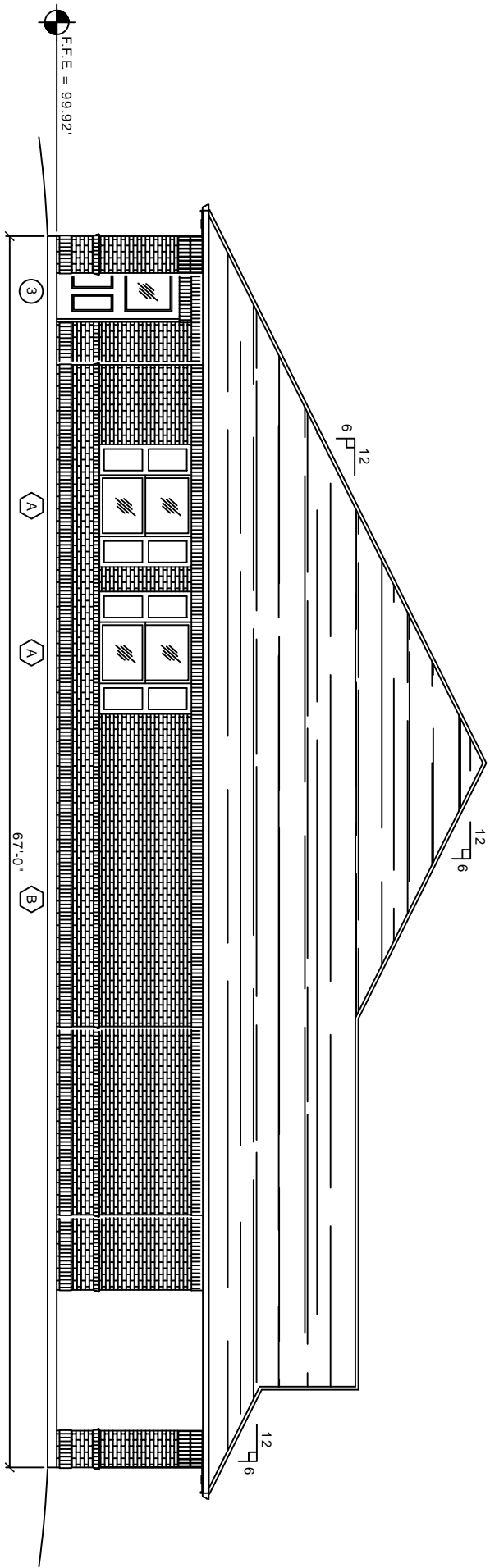
WWW.DAMMONENGINEERING.COM  
EMAIL:  
DAMMONENG@BELL.SOUTH.NET

ARCHITECTURE  
ENGINEERING  
STUDIES  
PLANNING  
INVESTIGATION  
EXPERT WITNESS

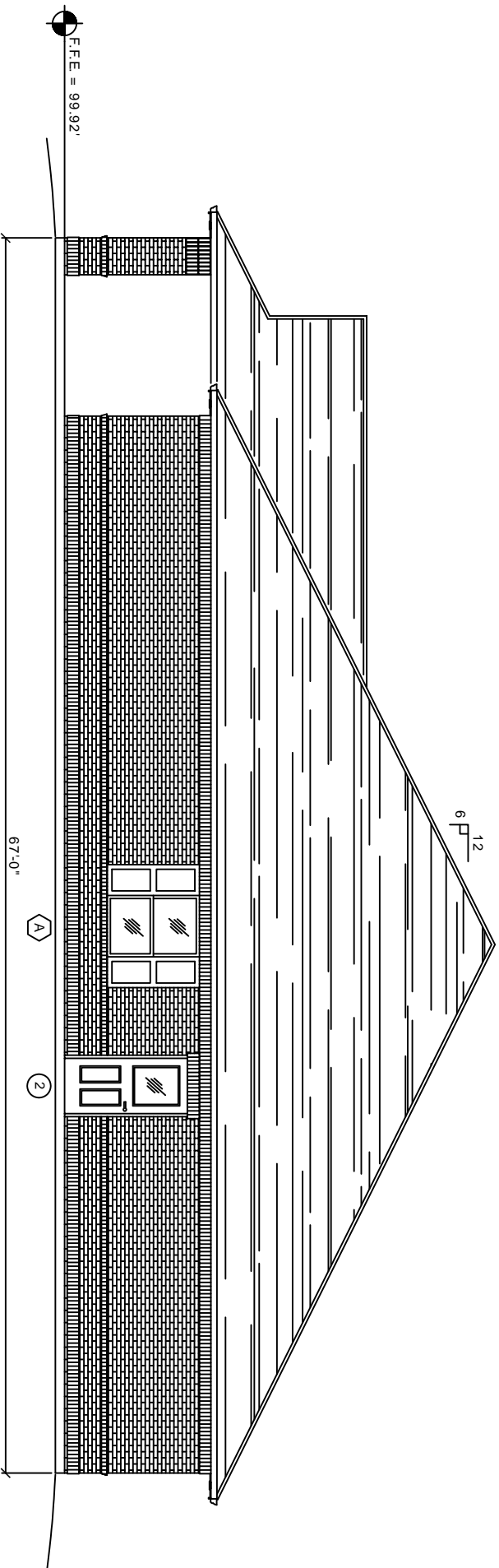
**NEW**  
LIVING  
FACILITY

STARC WEST  
VIOLA ST  
MANDEVILLE, LA

**EXTERIOR**  
ELEVATIONS



**LEFT SIDE ELEVATION**  
SCALE: 1/4" = 1'



**RIGHT SIDE ELEVATION**  
SCALE: 1/4" = 1'

REV:

SCALE: AS NOTED

JOB#: 2081

DATE: 7-21-10

SHEET

**A-5**

OF