

DAMMON
ENGINEERING, INC.

CHIEF ENGINEER
EMMETT
DAMMON, P.E.

CHIEF ARCHITECT
ROBERT
WILTSE

554 OLD SPANISH TRAIL
SLIDELL, LA, 70458
OFFICE: 985-649-5832
FAX: 985-641-5950

WWW.DAMMONENGINEERING.COM
WEBSITE:
EMAIL: DAMMONEN@BLSOUTH.NET

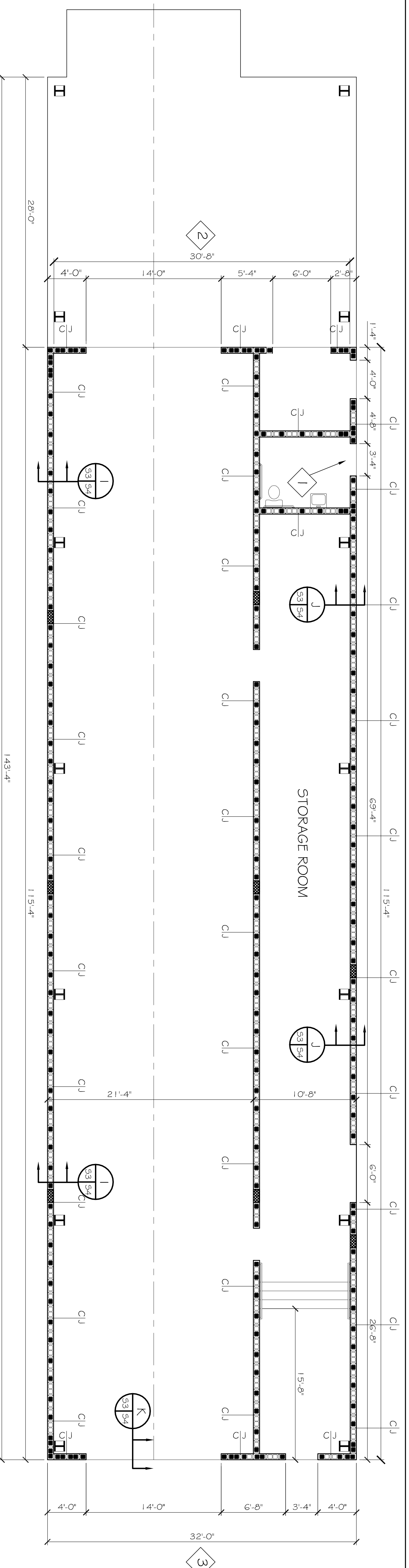
ARCHITECTURE
ENGINEERING
STUDIES
PLANNING
INVESTIGATION
EXPERT WITNESS

RAIN FOREST
CARWASH

3017
PONTCHARTRAIN
DRIVE
SLIDELL, LA
70458

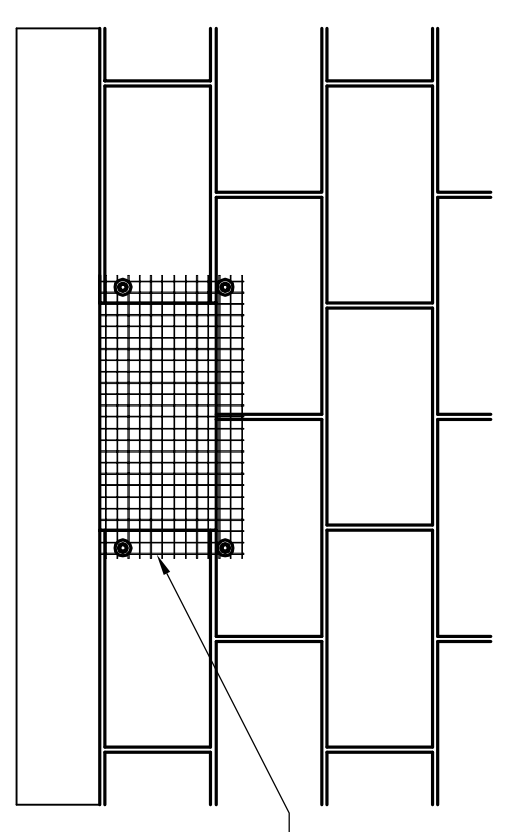
MASONRY
PLAN

REV:	SCALE: AS NOTED
JOB#: 2085	DATE: 03-23-11
SHEET 14	
OF 25	



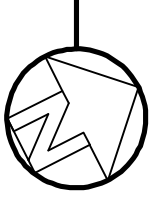
MASONRY NOTES

1. OPENING FOR ELEVATED TOILET ROOM DOOR. BOTTOM OF OPENING @ ELEVATION 11.0' BFL.
2. TOP OF MASONRY 14'-8" FOR THIS WALL ONLY. METAL STUD WALL SYSTEM ABOVE TO ROOF. SEE SHEET A-4 FOR DETAILS. LINTEL SIMILAR TO 24" CONCRETE LINTEL SHOWN ON EAST ENDWALL DETAIL.
3. TOP OF MASONRY 13'-4" FOR THIS WALL ONLY. METAL STUD WALL SYSTEM ABOVE TO ROOF. SEE SHEET A-4 FOR DETAILS.



FLOOD PROTECTION
SCALE: N.T.S.

MASONRY PLAN

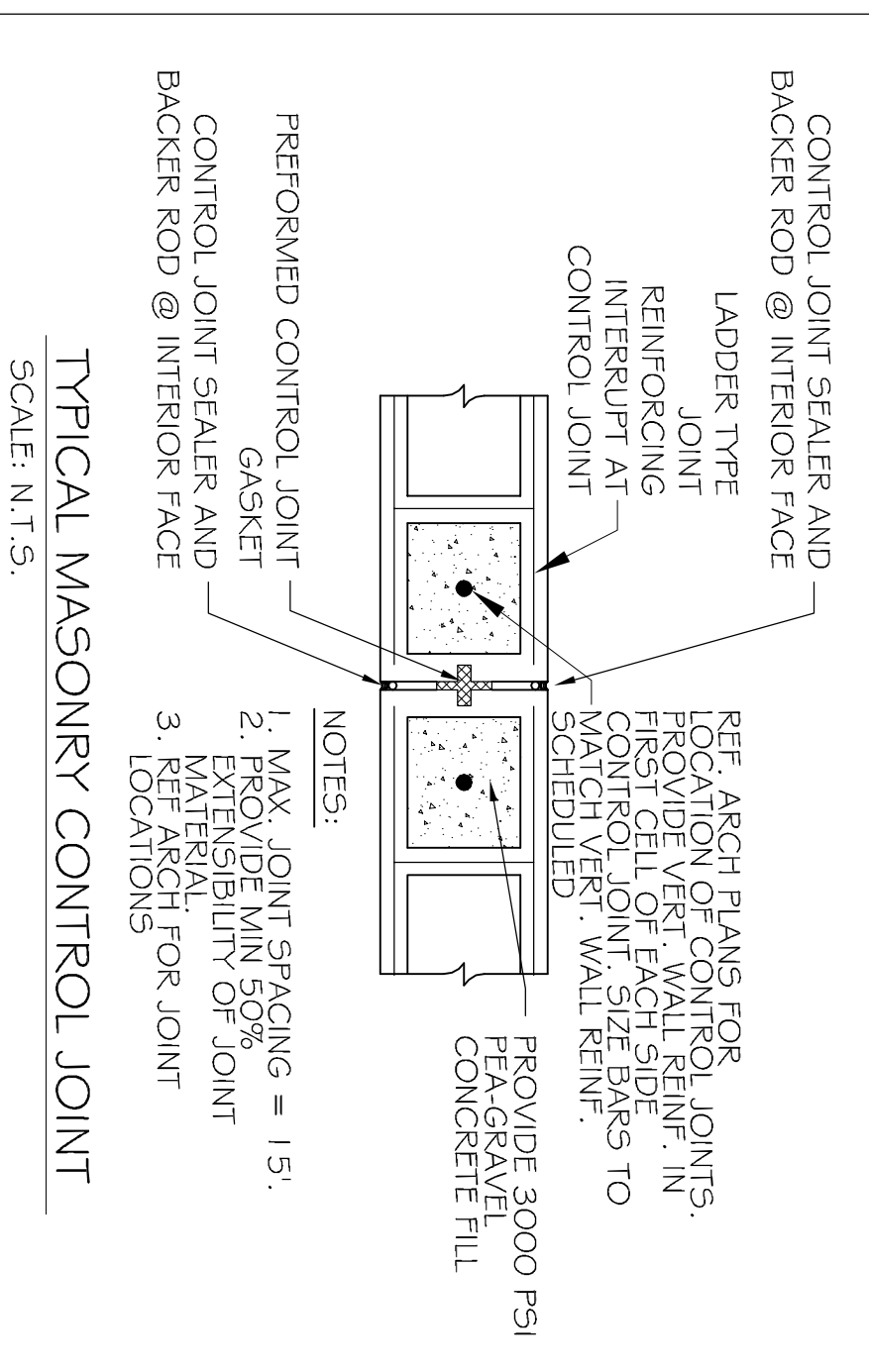


- SCALE: 3/16"=1'-0"
- INDICATES CONTINUOUS NO. 5 VERTICAL REINF. W/ 3000 PSI CONCRETE FILL.
 - CJ INDICATES MASONRY CONTROL JOINT. SEE DETAIL THIS SHEET
 - INDICATES FLOOD PROTECTION OPENING. SEE DETAIL THIS SHEET

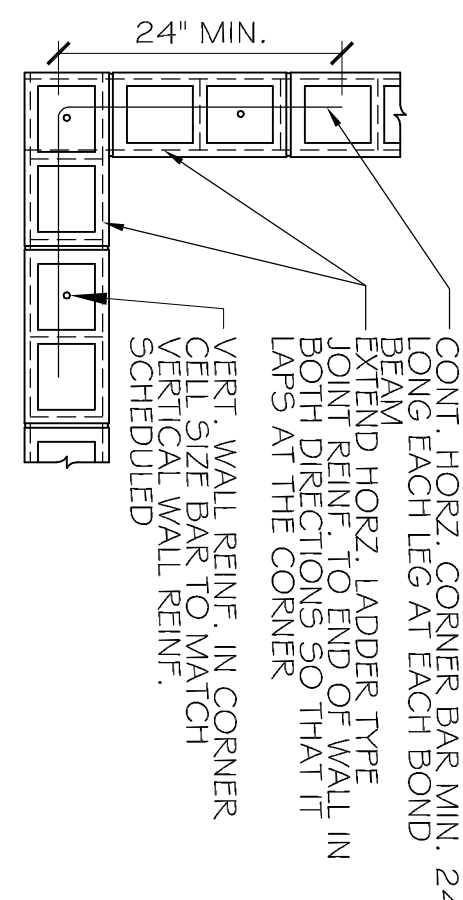
CMU LINTEL SCHEDULE

WIDTH (W)	CLEAR SPAN	DEPTH (D)	HORIZ. REINF.
8" TP	UP TO 3'-4"	8"	(1) #6 BOTTOM
AT ALL	UP TO 6'-4"	16"	(1) #6 T&B
WALLS	UP TO 14'-0"	24"	(2) #6 T&B

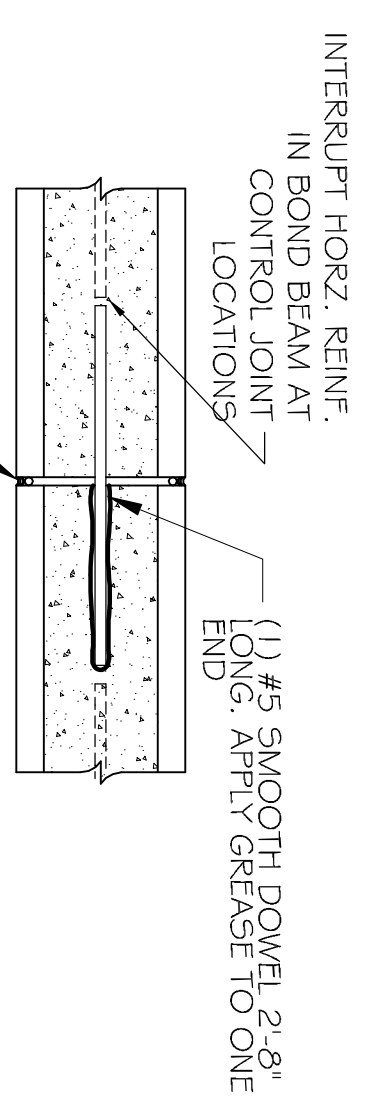
PROVIDE 3000 PSI PEA-GRAVEL CONCRETE FILL FOR ALL LINTELS.



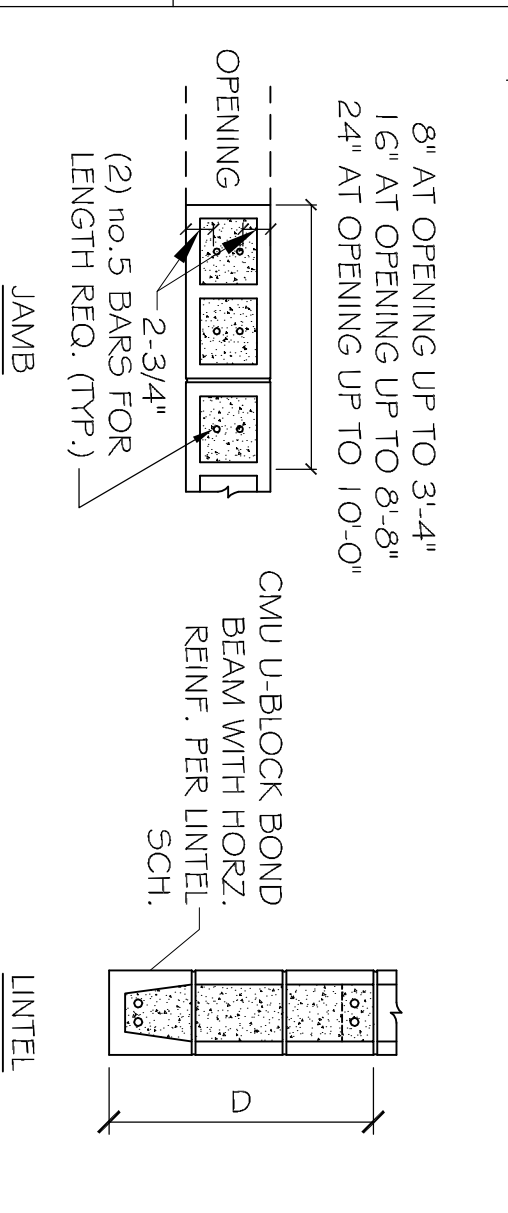
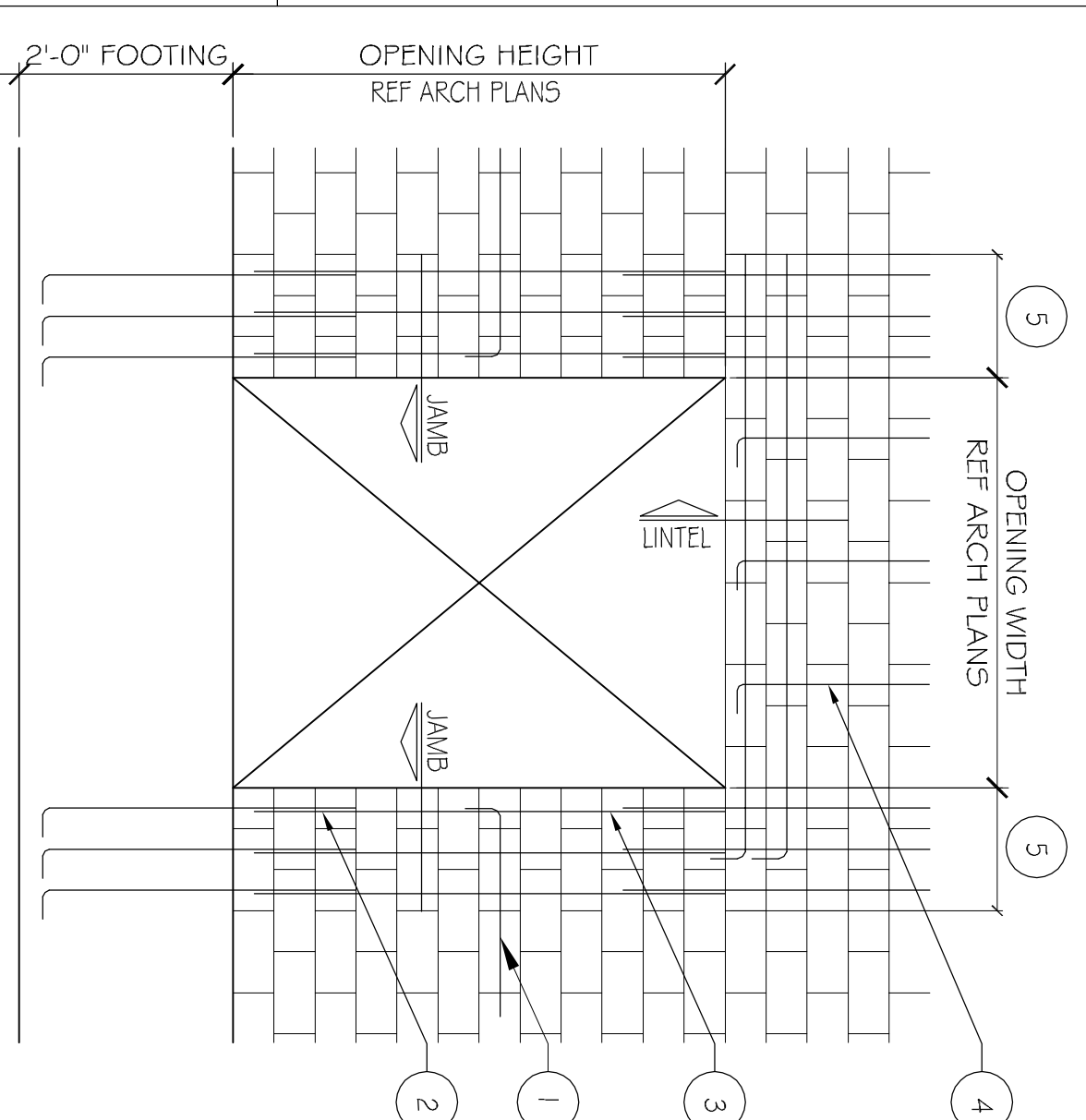
TYPICAL MASONRY CONTROL JOINT
SCALE: N.T.S.



TYPICAL REINF. @ CORNER OF MASONRY
SCALE: N.T.S.



CONTROL JOINT @ BOND BEAM
SCALE: N.T.S.



- NOTES:
1. WHERE HORIZ. REINFORCEMENT IS INTERRUPTED BY OPENING OR CONTROL JOINT, PROVIDE STANDARD ACI HOOK WITH VERT. WALL REINFORCING.
 2. SPICES IN VERT. REINF. REF. WALL SECTIONS 5.3.
 3. ALL VERT. BARS AT DOOR JAMBS TO BE FULL HEIGHT.
 4. CONTINUE VERT. WALL REINF. OVER OPENING. ANCHOR VERT. REINF. INTO LINTEL BEAM WITH STANDARD ACI HOOK.
 5. FOR STRAIGHT LINTEL REINF. AND 1'-0" FOR LINTEL REINF. WITH STANDARD ACI HOOK.