



**DAMMON**  
ENGINEERING, INC.

CHIEF ENGINEER  
EMMETT DAMMON, P.E.

CHIEF ARCHITECT  
ROBERT WILTSE

1055 FLORIDA AVENUE  
SUDELL, LA. 70450  
OFFICE: 985-649-5632  
FAX: 985-641-5950

WEBSITE:  
WWW.DAMMONENGINEERING.COM

EMAIL:  
DAMMON@DAMMONENGINEERING.COM

ARCHITECTURE  
ENGINEERING  
STUDIOS  
PLANNING  
INVESTIGATION  
EXPERT WITNESS

NORTH PARK  
CARWASH

3017  
PONTCHARTRAIN  
DRIVE  
SLIDELL, LA  
70458

SITE PLAN  
SCHEME TWO

REV:

SCALE: AS NOTED

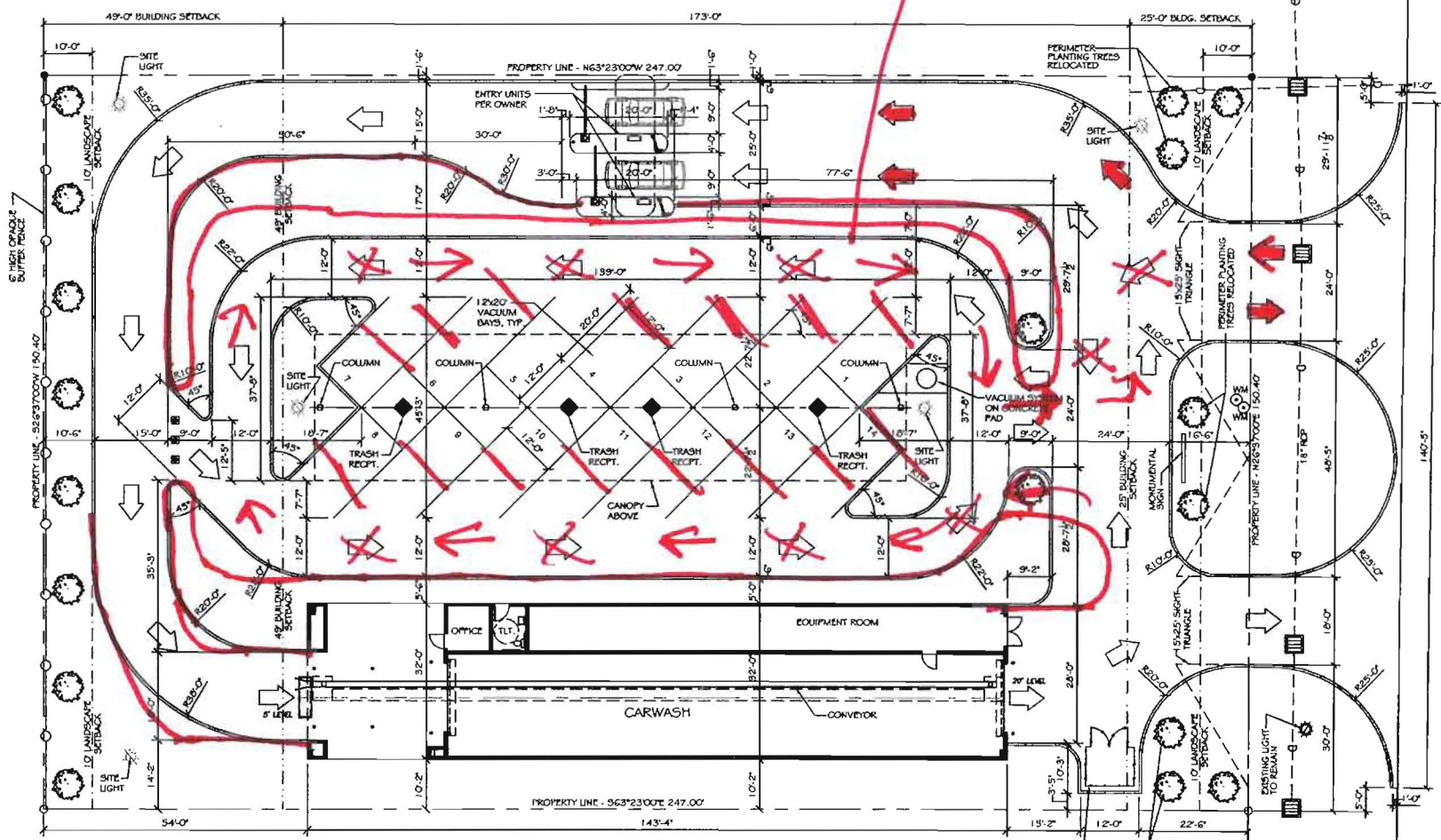
JOB#: 2085

DATE: 11-12-10

SHEET

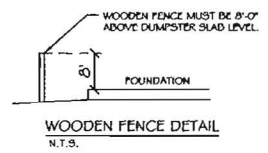
**C-2**

PRELIMINARY (NOT FOR CONSTRUCTION) OF



**SITE LEGEND**

- PROPERTY LINE
- UTILITY / EASEMENT LINE
- BUILDING SETBACK MINIMUM
- - - TRIANGULAR SITE LINE
- - - LANDSCAPING SETBACK MINIMUM AND BUFFER ZONE LIMITS AT REAR
- OPAQUE BUFFER FENCE
- BUILDING OUTLINE
- TRASH RECEPTACLE
- ⊙ NEW SITE LIGHTING



**SITE PLAN**  
SCALE: 1"=10'

- SITE PLAN NOTES**
1. ROOFING MATERIAL: METAL ROOFING PANEL
  2. SOUND BARRIER: CONVENTIONAL STUCCO VENER & CMU.
  3. UTILITIES: ALL UTILITIES SHALL BE PLACED UNDERGROUND

NOTE:  
PAVEMENT IN ALL PARKING AREAS SHALL BE 5" THICK CONCRETE.

**SITE LIGHTING**

EXTERIOR LIGHTING SHALL BE SHADDED OR INWARDLY DIRECTED IN SUCH A MANNER SO THAT NO DIRECT LIGHTING OR GLARE BE CAST BEYOND THE PROPERTY LINE. THE INTENSITY OF SUCH LIGHTING SHALL NOT EXCEED ONE FOOT CANDLE AS MEASURED AT THE ADJUTING PROPERTY LINE.

PONTCHARTRAIN BOULEVARD

ROSA STREET