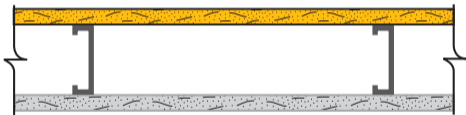


## 1-Hour Fire Rating

Design Reference: UL U465, ULC W415<sup>1</sup>, cUL U465,  
GA WP 1081<sup>2</sup>

**EXTERIOR**



## 48 STC Sound Trans.

Test Reference: RAL TL 103

Wall Thickness: 4-7/8" (124 mm)

Weight per Sq. Ft.: 6 psf (29 kg/m<sup>2</sup>)

Exterior: 5/8" (15.9 mm) DensGlass Fireguard Sheathing applied vertically to min. 3-5/8" (92 mm) corrosion resistant 25-gauge (18 mils) steel studs 24" (610 mm) o.c. with 1" (25 mm) corrosion resistant bugle head screws 8" (203 mm) o.c. at board edges and 8" (203 mm) at intermediate studs.

Interior: 5/8" (15.9 mm) DensArmor Plus Fireguard or 5/8" (15.9 mm) ToughRock Fireguard gypsum board applied vertically to framing with 1" (25 mm) Type S bugle head screws 8" (203 mm) o.c. at board edges and 12" (305 mm) at intermediate studs. Sound tested with 3" mineral fiber, 2.5 psf, in stud space.