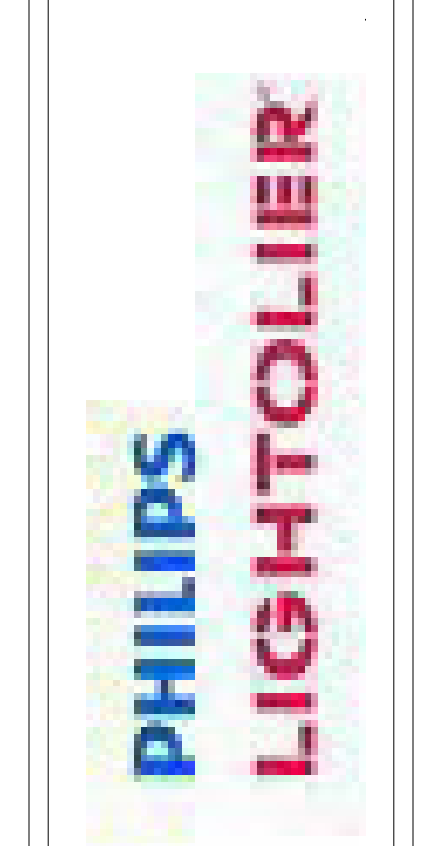


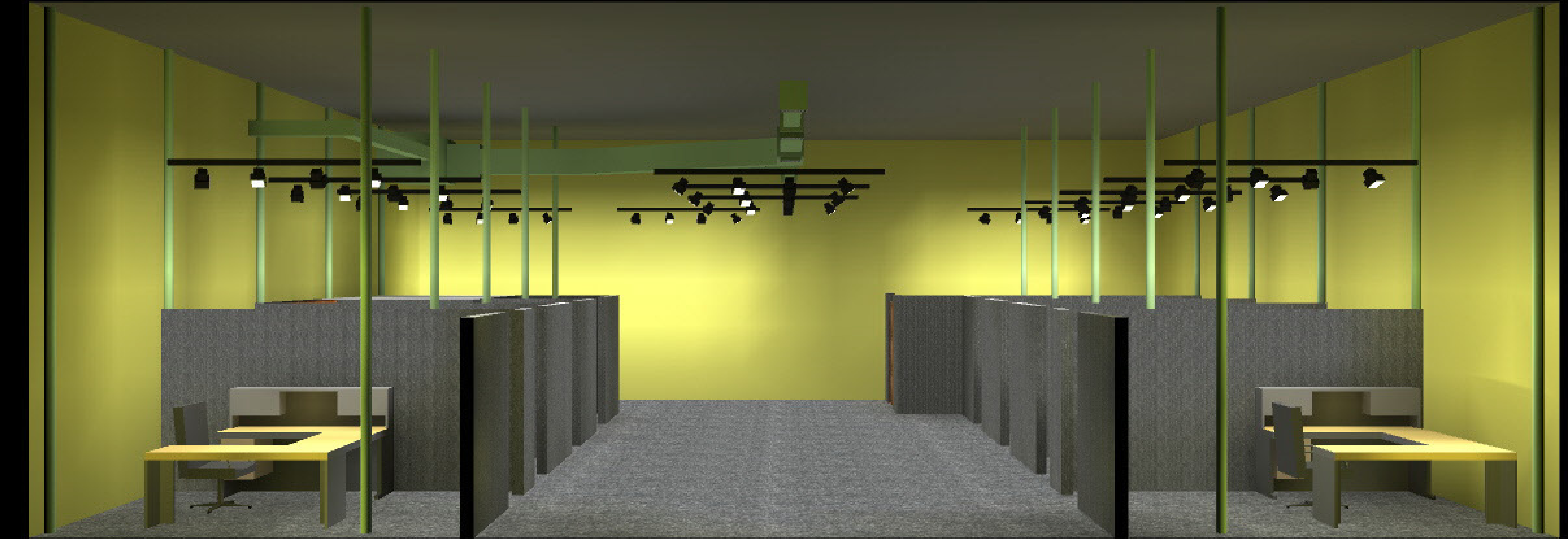
E Sheet

#	Date	Comments



Prepared For:	
Checked By:	
Date:	11/16/2010
Scale:	

Olde Town
Slidell Office



Left End

E Sheet

#	Date	Comments



Prepared For:	
Checked By:	
Date:	11/16/2010
Scale:	

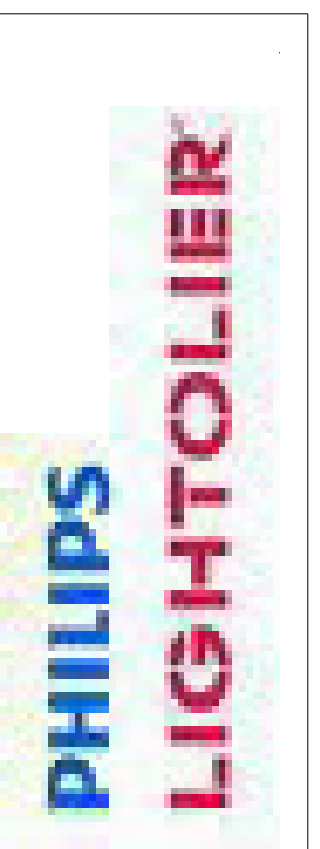
Olde Town
Slidell Office



Office Side

E Sheet

#	Date	Comments



Prepared For:	
Checked By:	
Date:	11/16/2010
Scale:	

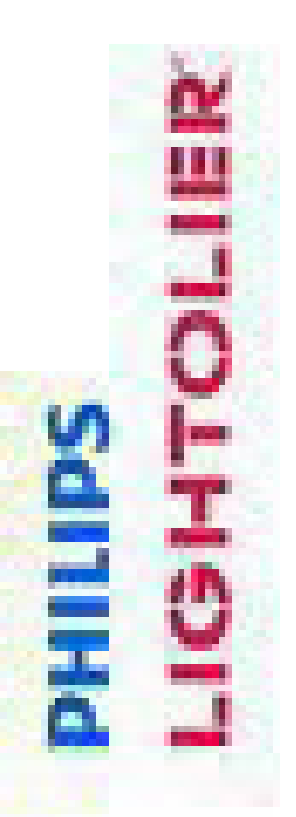
Olde Town
Slidell Office



Right End

E Sheet

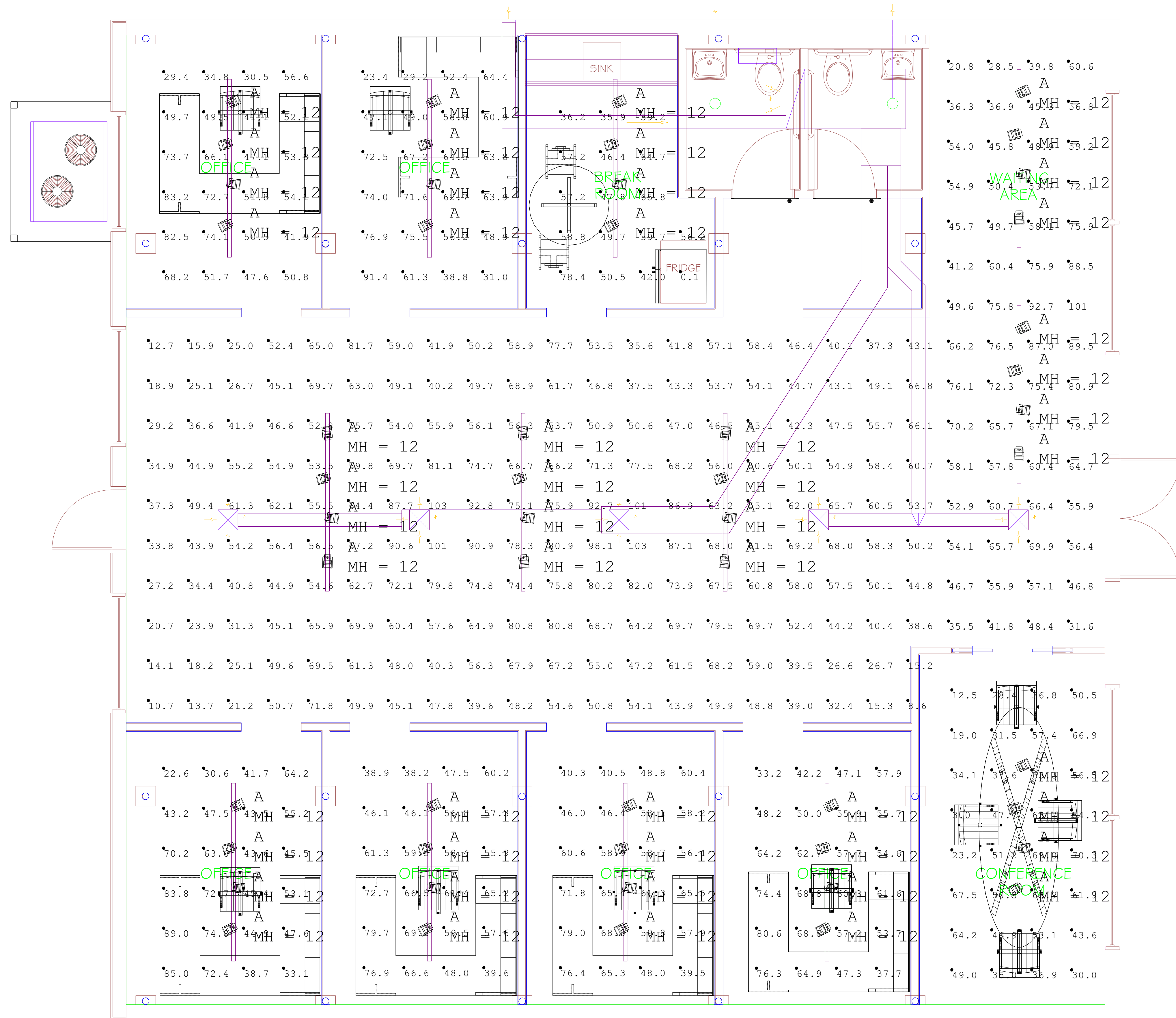
#	Date	Comments



Prepared For:	
Checked By:	
Date:	11/16/2010
Scale:	

Olde Town
Slidell Office

Luminaire Schedule								
Symbol	Qty	Label	LLF	Description	[MANUFAC]	BUG Rating	No. Lamps	Lumens/Lamp
	52	A	0.850	MHT4RF-70W	LIGHTOLIER	N.A.	1	6400



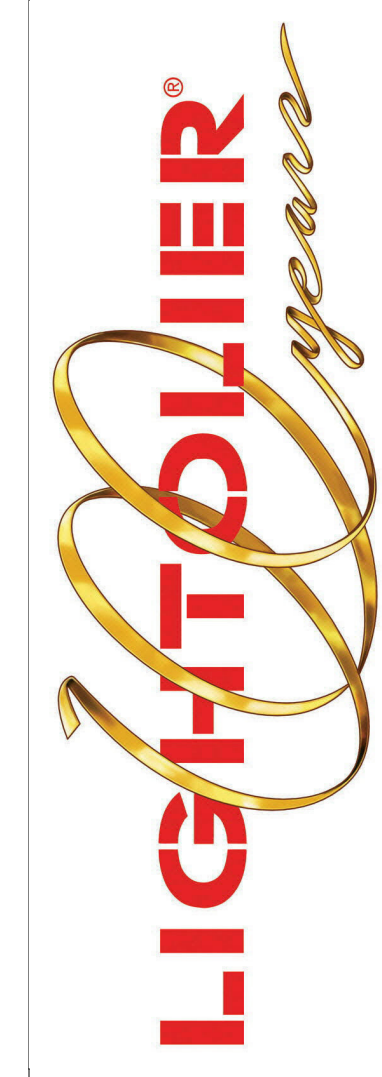
Calculation Summary								
Label	CalcType	Units	Avg	Max	Min	Avg/Min	Max/Min	# Pts
Break	Illuminance	Fc	50.93	78.4	0.1	509.30	784.00	17
Conference	Illuminance	Fc	46.24	70.3	3.0	15.41	23.43	32
Office 1	Illuminance	Fc	54.73	83.2	29.4	1.86	2.83	24
Office 2	Illuminance	Fc	58.56	91.4	23.4	2.50	3.91	24
Office 3	Illuminance	Fc	54.66	89.0	22.6	2.42	3.94	24
Office 4	Illuminance	Fc	57.88	79.7	38.2	1.52	2.09	24
Office 5	Illuminance	Fc	57.97	79.0	39.5	1.47	2.00	24
Office 6	Illuminance	Fc	57.54	80.6	33.2	1.73	2.43	24
Open Area	Illuminance	Fc	54.95	103	8.6	6.39	11.95	200
Waiting Area	Illuminance	Fc	59.53	101	20.8	2.86	4.85	60

Acknowledgement/Disclaimer

By receipt of this document in paper form or electronic version via email, the recipient(s) shall read this document thoroughly, accept the following as an integral part of the photometry files provided herein. Printed versions of these photometry files shall include the below disclaimer language:

All images are for reference only and are a Facsimile of the space.

File Name: Olde Town Slidell Office fc.dwg
 Date: 11/16/2010
 Calculations have been performed according to IESNA & CIE standards and good practice. Some differences between measured values and calculated results may occur due to tolerances in the calculation methods, testing procedures, component performance, measured techniques and field conditions such as voltage and temperature variations. Input data used to generate the attached calculations such as room dimensions, reflectances, furniture and architectural elements significantly affect the lighting calculations. If the real environmental conditions do not match the input data, and actual lamps installed, differences will occur between values and calculated results.



#	Date	Comments



Prepared For:	
Checked By:	
Date:	11/16/2010
Scale:	