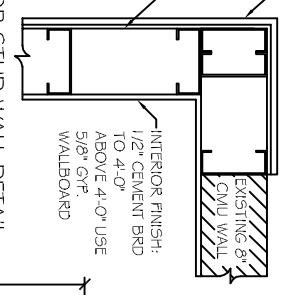


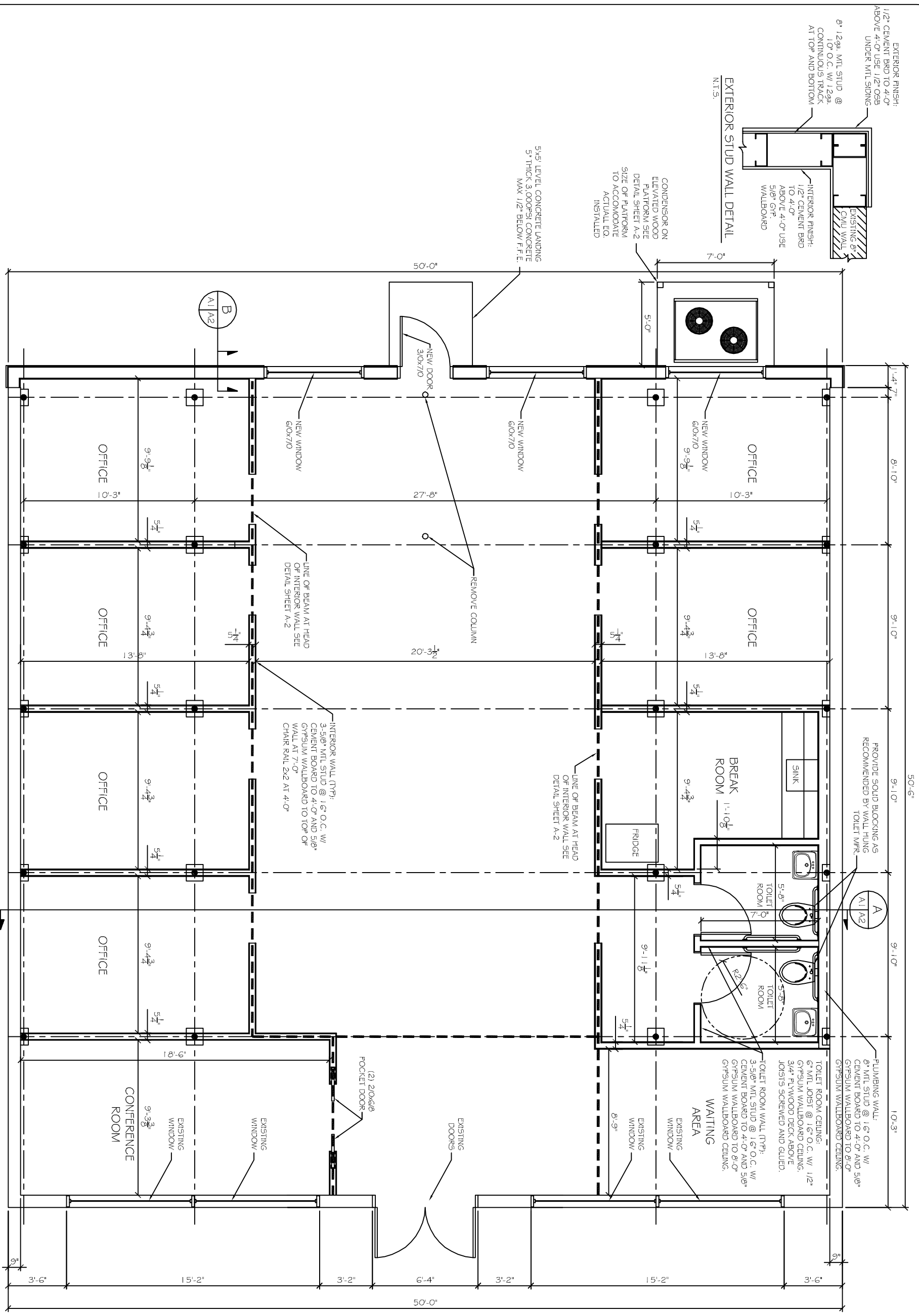
EXTERIOR FINISH:
1/2" CEMENT BRD TO 4'-0"
ABOVE 4'-0" USE 1/2" OSB
UNDER MTL SIDING

8" 12ga. MTL STUD @
16" O.C. W/ 12ga
CONTINUOUS TRACK
AT TOP AND BOTTOM



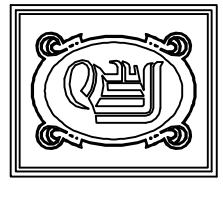
CONDENSATOR ON
ELEVATED WOOD
PLATFORM SEE
DETAIL SHEET A-2
SIZE OF PLATFORM
TO ACCOMMODATE
ACTUAL EQ.
INSTALLED

5/8" CP
WALBOARD
ABOVE 4'-0" USE
1/2" CEMENT BRD
TO 4'-0"



FLOOR PLAN
SCALE: 3/8"=1'

NOTE:
EXISTING FRONT AND SIDE BUILDING WALLS, COLUMNS, TRUSSES, AND ROOF TO REMAIN. ALL INTERIOR WALLS, EXCEPT TOILET ROOMS, OPEN TO ROOF. WALLS TO TERMINATE AT 7'-0"



DAMMON ENGINEERING, INC.
 CHIEF ENGINEER
 ENNETT DAMMON, P.E.
 CHIEF ARCHITECT
 ROBERT WALTSE

1095 FLORIDA AVENUE
 SLIDELL, LA, 70458
 OFFICE: 985-649-5632
 FAX: 985-641-5950
 WWW.DAMMONENGINEERING.COM
 EMAIL: DAMMONENR@BELLSouth.NET

ARCHITECTURE
 ENGINEERING
 STUDIES
 PLANNING
 INVESTIGATION
 EXPERT WITNESS

TENANT BUILD-OUT

CHAMPAGNE BUILDING LLC
 2242 CAREY ST.
 SLIDELL, LA 70458

FLOOR PLAN

REV:	
SCALE:	AS NOTED
JOB#:	2086
DATE:	11-08-10
SHEET	2