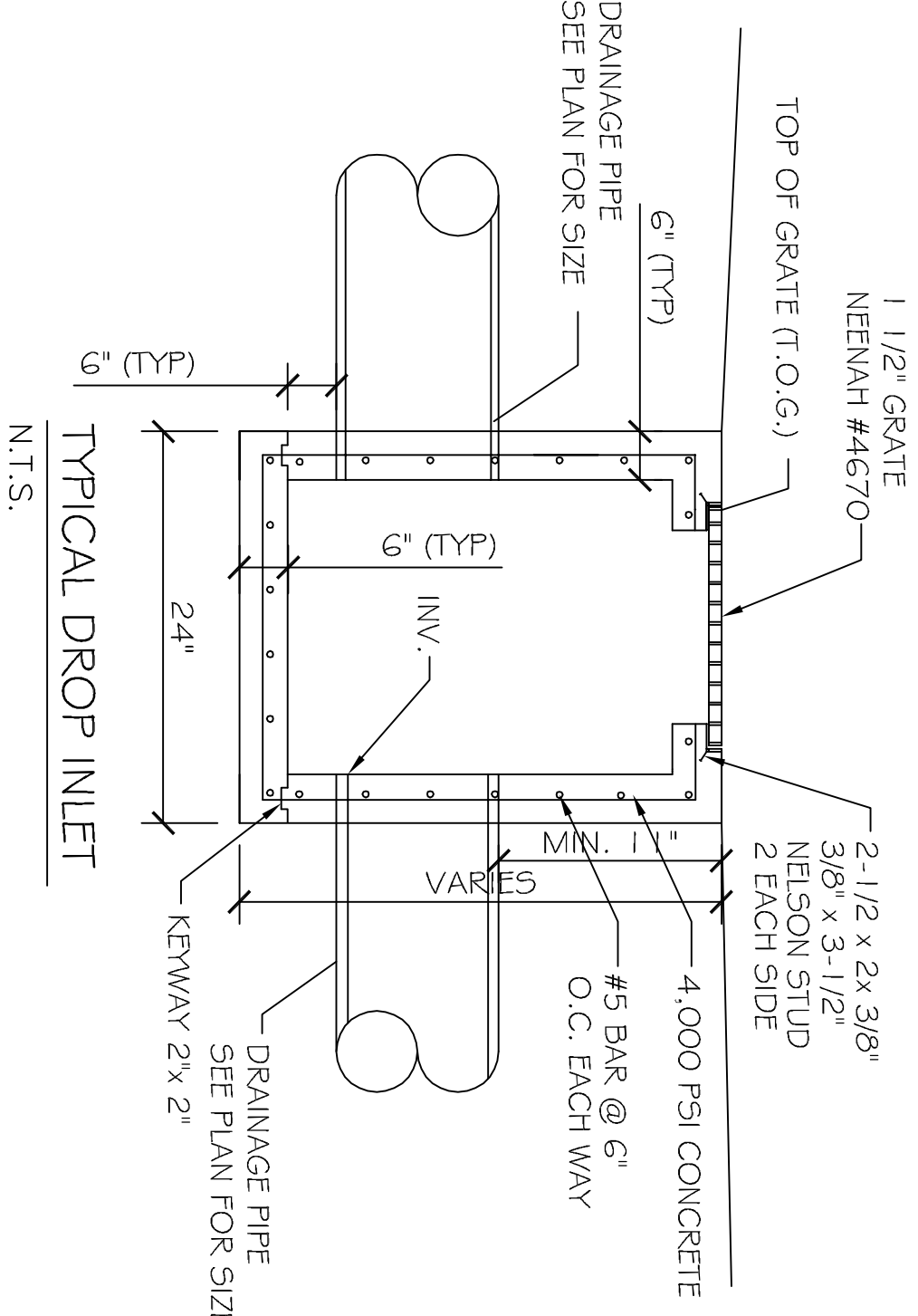
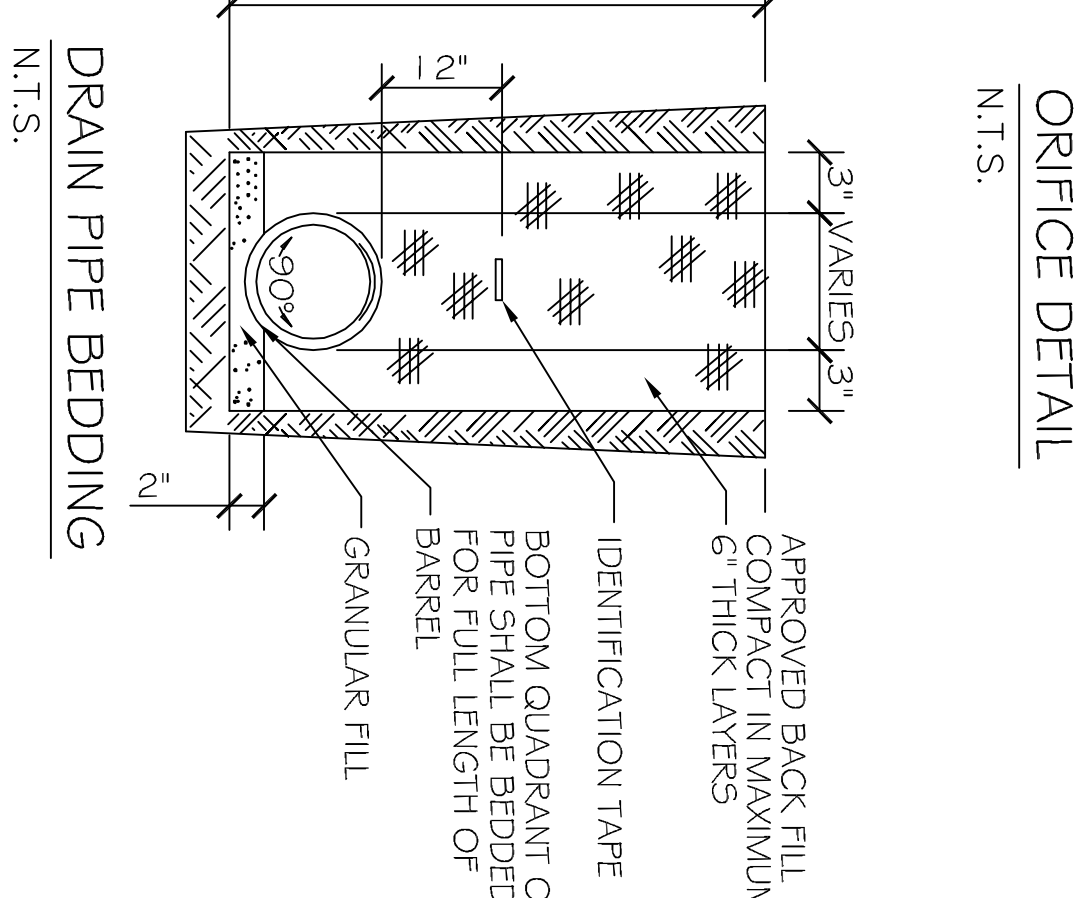
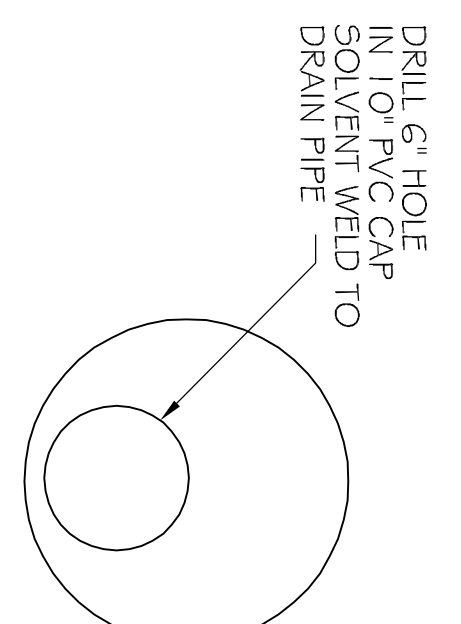


DRAINAGE PLAN
SCALE: 1/8" = 1'-0"



- DRAINAGE NOTES:**
- 1) DRAIN PIPE & FITTINGS WITHIN PROPERTY LINE SHALL BE POLYVINYL CHLORIDE (PVC) PIPE, MEETING CLASS 100 C-500 PVC.
 - 2) ELEVATIONS SHOWN ARE M.S.L.
 - 3) FIELD VERIFY ALL ELEVATIONS AND DRAINAGE SYSTEM PLACEMENT PRIOR TO START OF WORK.
 - 4) DOWN SPOUTS SHALL FLOW INTO SUB-SURFACE DRAINAGE SYSTEM.
 - 5) THERE IS NO EVIDENCE OF EXISTING OFF-SITE FLOW CROSSING THE PROPERTY. NEW DRAINAGE CALCULATIONS ARE DETERMINED ACCORDINGLY.

- LEGEND**
- NEW DROP INLET w/TEMP. SILT FENCE
 - PROPERTY LINE
 - SETBACK
 - NEW ELEVATION
 - INVERT ELEVATION
 - TOP OF GRATE ELEVATION
 - NEW DRAINAGE PIPE
 - EXISTING DRAINAGE PIPE
 - SHEET FLOW DIRECTION

[1] RATIONAL METHOD: C=AcI

[4] TC= (1.48 x (1000 - 60)^(0.77)) / (1.49 x (1.49 x 1.49))

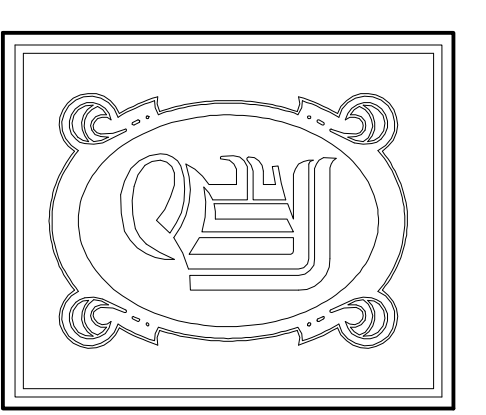
0.9	0	0.000
0.25	0	0.000
0.15	10808	0.248
0.15	10808	0.248
0.15	10808	0.248

140	14
0.15	0.014 cfs
1,000	0.014 cfs
21.89	0.014 cfs
3.64	0.014 cfs

0.9	6028	0.138
0.25	0	0.000
0.15	4780	0.110
0.15	10808	0.248

122	3.1
0.57	0.57
2,541.0	0.57
12.16	0.57
3.64	0.57
0.38	0.38
1390.0	0.38
0.513 cfs	0.513 cfs
72	0.47 feet
40	0.47 feet

0014	300
0.62	0.002
32.16	0.002
0.584	0.584 inch inside diameter



DAMMON ENGINEERING, INC.
 CHIEF ENGINEER
 EMMETT DAMMON, P.E.
 CHIEF ARCHITECT
 ROBERT WILTSE

554 OLD SPANISH TRAIL
 SUDELL, LA, 70458
 OFFICE: 985-649-5632
 FAX: 985-641-5950
 WWW: DAMMONENGINEERING.COM
 EMAIL: DAMMONENG@BELL-SOUTH.NET

ARCHITECTURE
 ENGINEERING
 STUDIES
 PLANNING
 INVESTIGATION
 EXPERT WITNESS

PAUL REES
 OFFICE BUILDING
 2275 8TH. ST.
 MANDEVILLE, LA
 70471

DRAINAGE PLAN

REV: _____

SCALE: AS NOTED
 JOB#: 2104
 DATE: 05-20-11
 SHEET 4

C-3

OF 20