

DAMMON ENGINEERING, INC.

CHIEF ENGINEER
EMMETT DAMMON, P.E.

CHIEF ARCHITECT
ROBERT WILTSE

554 OLD SPANISH TRAIL
SLIDELL, LA. 70458
OFFICE: 985-649-5832
FAX: 985-641-5950

WEBSITE:
WWW.DAMMONENGINEERING.COM

EMAIL:
DAMMONENG@BELLSOUTH.NET

- ARCHITECTURE
- ENGINEERING
- STUDIES
- PLANNING
- INVESTIGATION
- EXPERT WITNESS

PAUL REES
OFFICE BUILDING
2275 8TH. ST.
MANDEVILLE, LA
70471

FOUNDATION
PLAN

Robert Wiltse

REV:

SCALE: AS NOTED

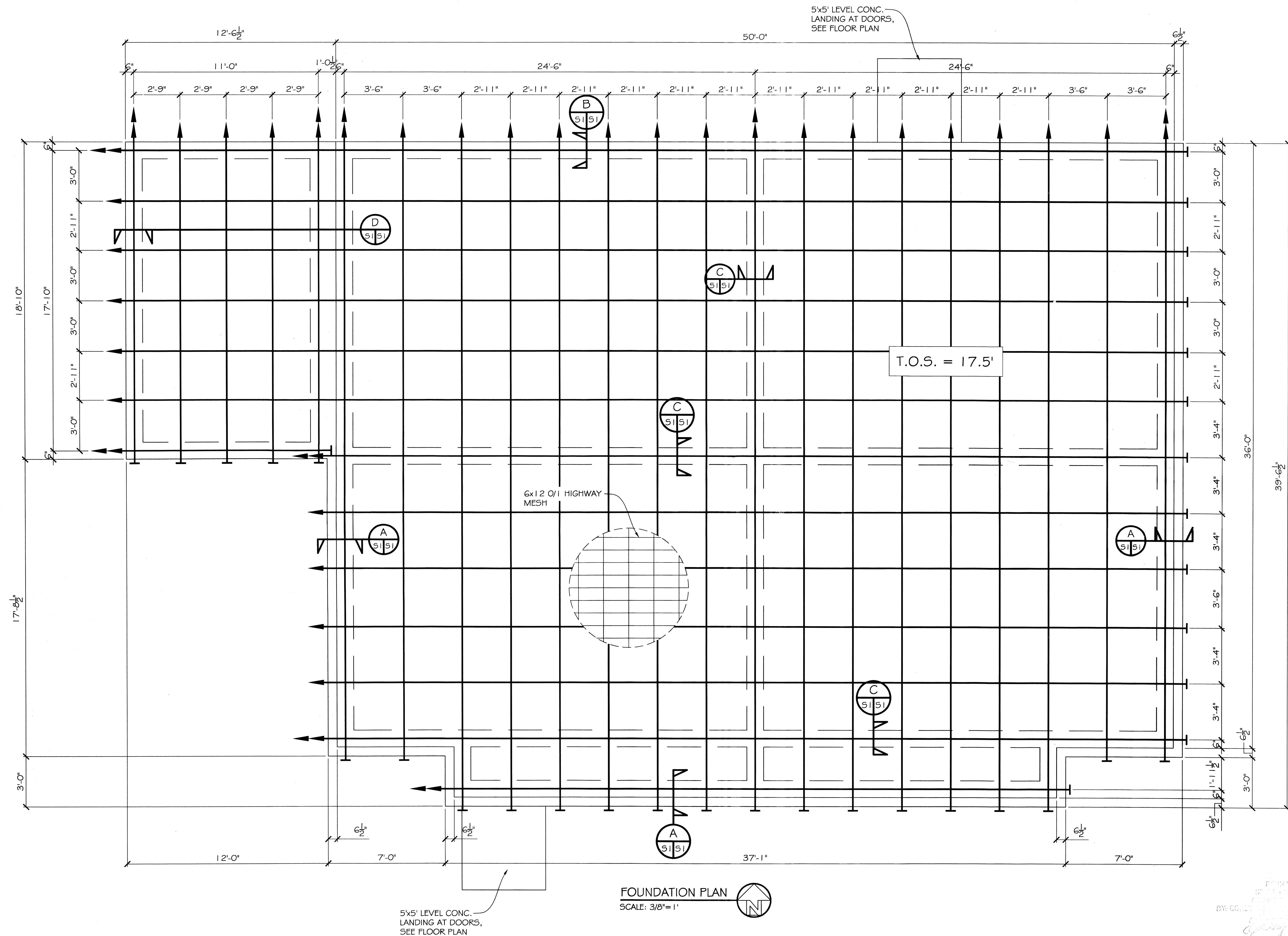
JOB#: 2104

DATE: 05-20-11

SHEET 8

S-1

OF 20



FOUNDATION PLAN
SCALE: 3/8"=1'

FORWARDED FOR
REVISION
BY: *[Signature]*