

**DAMMON  
ENGINEERING, INC.**

CHIEF ENGINEER  
EMMETT  
DAMMON, P.E.

CHIEF ARCHITECT  
ROBERT  
WILTSE

554 OLD SPANISH TRAIL  
SLIDELL, LA. 70458  
OFFICE: 985-649-5832  
FAX: 985-641-5950

WEBSITE:  
WWW.DAMMONENGINEERING.COM

EMAIL:  
DAMMONENG@BELLSOUTH.NET

ARCHITECTURE

ENGINEERING

STUDIES

PLANNING

INVESTIGATION

EXPERT WITNESS

SAFE  
HARBOR

SHS  
HOLDINGS, INC.  
2275 8TH STREET  
MANDEVILLE, LA  
70471

REFLECTED  
CEILING PLAN

REV:

SCALE: AS NOTED

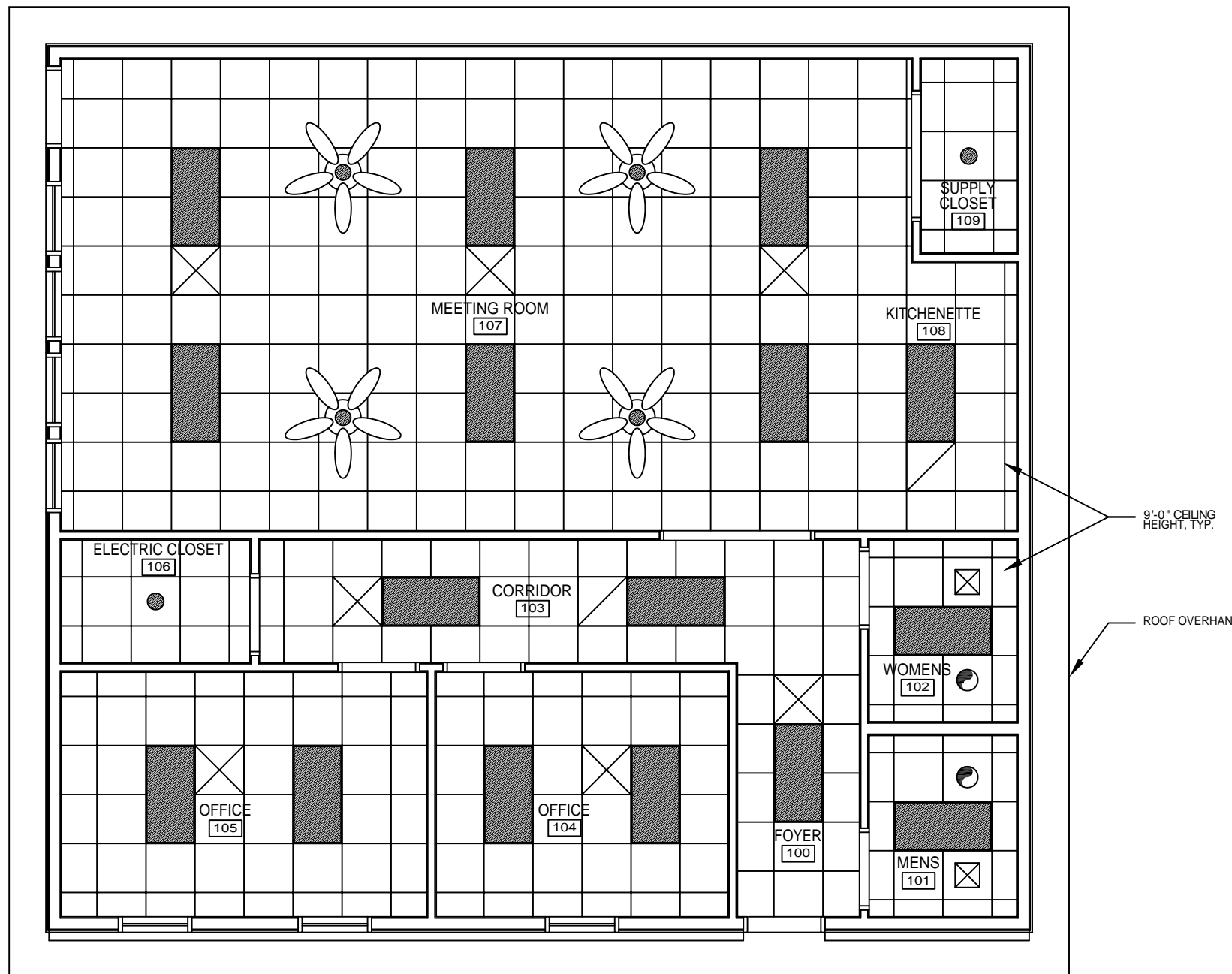
JOB#:

DATE: 03-23-11



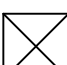
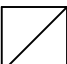



SHEET

**A-2**

OF



**LEGEND**

-  - A.C.T. CEILING GRID (2'x2')
-  - GYPSUM BOARD CEILING
-  - SUPPLY AIR
-  - RETURN AIR
-  - 2'x4' FLUORESCENT LIGHT
-  - EXHAUST FAN
-  - STANDARD BULB FIXTURE

**REFLECTED CEILING PLAN**

SCALE: 3/8"=1'

PRELIMINARY (NOT FOR CONSTRUCTION)