

**DAMMON ENGINEERING, INC.**

CHIEF ENGINEER  
EMMETT DAMMON, P.E.

CHIEF ARCHITECT  
ROBERT WILTSE

554 OLD SPANISH TRAIL  
SLIDELL, LA. 70458  
OFFICE: 985-649-5832  
FAX: 985-641-5950

WEBSITE:  
WWW.DAMMONENGINEERING.COM

EMAIL:  
DAMMONENG@BELLSOUTH.NET

ARCHITECTURE  
ENGINEERING  
STUDIES  
PLANNING  
INVESTIGATION  
EXPERT WITNESS

PAUL REES  
OFFICE BUILDING  
2275 8TH. ST.  
MANDEVILLE, LA  
70471

LIGHTING PLAN

REV:

SCALE: AS NOTED

JOB#: 2104

DATE: 05-11-11

SHEET

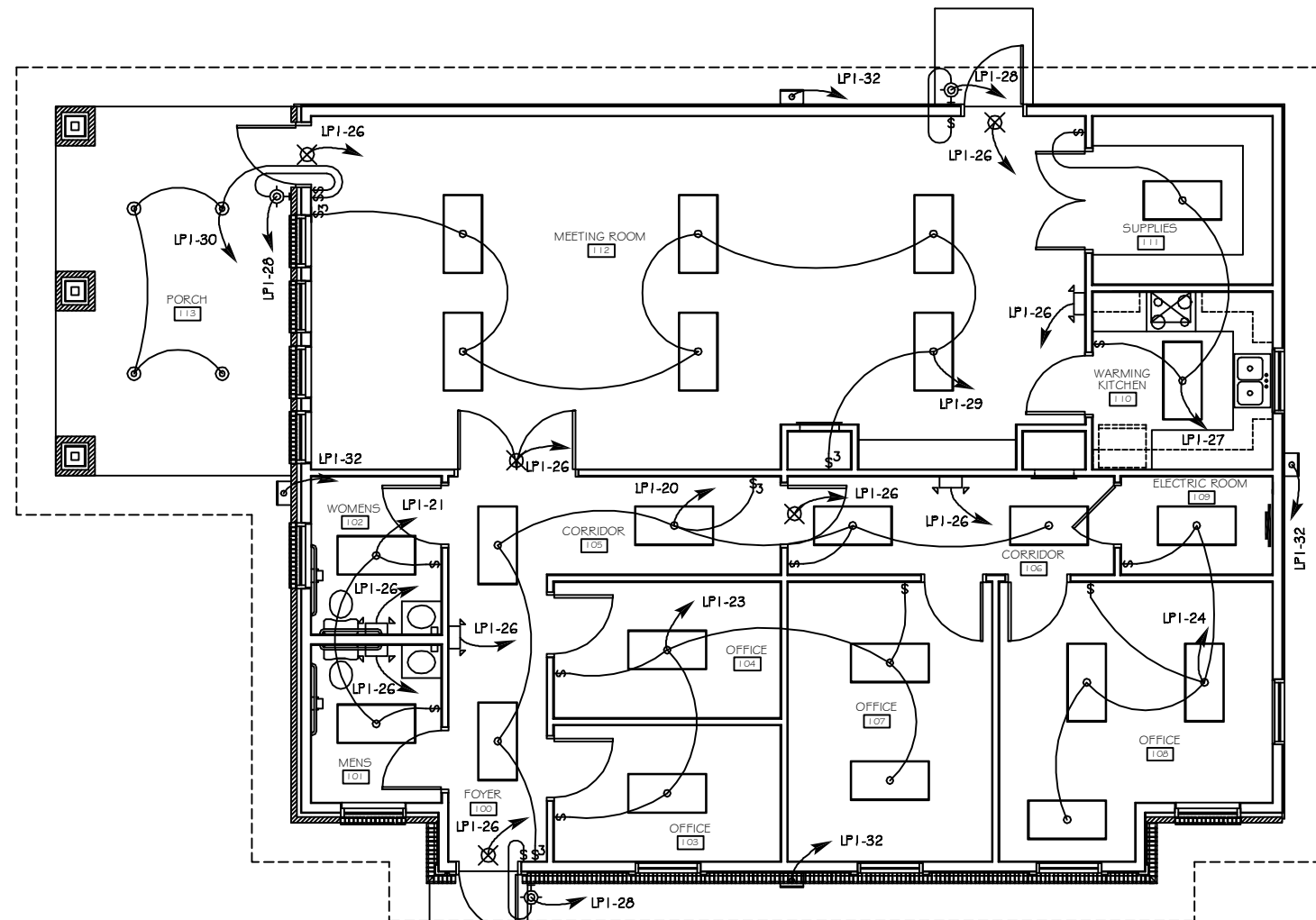
E-2

OF

**CLECO Power LLC - Electrical Load Summary**

Project Name: Paul Rees Office Building  
 Project Address: 2275 8th. Street  
 City / Town: Mandeville, Louisiana  
 Intended Use: Office Building  
 Requested Service: 240 Volts 1  $\phi$  Phase 3 Wires  
 Service Entrance Size: 200 Amps  
 HVAC Tonnage: 7.00 Tons  
 Largest Motor: N/A HP (Note: Motors above 20 hp may require reduced Voltage starting and are never recommended for use with 120/240V, 3  $\phi$ , 4W services.)  
 Total Building Square Footage: 2,188 Square Feet  
 Individual Unit Square Footage: N/A Square Feet (Multiple Occupancy)  
 Individual Unit Designation: N/A (Multiple Occupancy)

LOAD SOURCE	1 $\phi$ - kVA	3 $\phi$ - kVA	or	1 $\phi$ - kW	3 $\phi$ - kW
Building Lighting	2268	-	or	-	-
Electric Water Heating	7200	-	or	-	-
Heat Pumps	-	-	or	-	-
Supplemental Heat System	-	-	or	-	-
Air Conditioning Condensing Units	14400	-	or	-	-
Electrical Heating (Primary) - AHUs	21600	-	or	-	-
Cooling	-	-	or	-	-
Refrigeration	160	-	or	-	-
Receptacles (Standard)	6720	-	or	-	-
Receptacles (Computer)	-	-	or	-	-
Total Motors (Exclude HVAC)	-	-	or	-	-
Exterior Lighting	1230	-	or	-	-
Miscellaneous - Ceiling Fans	640	-	or	-	-
Other (Specify)	-	-	or	-	-



**LEGEND**

- 2'x4' FLUORESCENT LIGHT (3 BULB)  
3 BULBS @ 32 w EA. = 96 w PER LIGHT
- EXIT LIGHT w/90 MIN. BATTERY BACK-UP (.92 w EA.)
- EMERGENCY LIGHT w/ 90 MIN. BATTERY BACKUP (10.82 w EA.)
- WALL MOUNTED EXTERIOR LIGHT FIXTURE (90 w EA.)
- WALL MOUNTED EXTERIOR WALL PACK FLOOD LIGHT (150 w EA.)
- CAN LIGHT (90W)
- SWITCH
- 3 WAY SWITCH
- POWER PANEL

LIGHTING PLAN  
SCALE: 1/4" = 1'

PANEL: LP-1  
LOCATION: PAUL REES OFFICE BUILDING ELECTRICAL CLOSET  
FEEDER SOURCE: CLECO

VOLTAGE: 120/240V, 200A 1 $\phi$ , 3W, MLO  
SURFACE MOUNTED W/EQUIPMENT GND BAR

CIR. NO.	THRU WIRE SIZE	LOAD DESCRIPTION		BREAKER		LOAD (VA)	As	Bs	LOAD (VA)	BREAKER		LOAD DESCRIPTION		THRU WIRE SIZE	CIR. NO.
		LOCATION	AMP	POLE	POLE					AMP	LOCATION				
1	#6	AHU #1	45	2	5400			3600	2	30	A/C COMPRESSOR #1	#8	2		
3	#6	12 KW			5400			3600			3 1/2 TON		4		
5	#6	AHU #2	45	2	5400			3600	2	30	A/C COMPRESSOR #2	#8	6		
7	#6	12 KW			5400			3600			3 1/2 TON		8		
9	#8	WATER HEATER	30	2	3600			640	1	20	FOYER 100 RECEPTACLE, RESTROOMS 101, 102, & EXTERIOR GFI RECEPTACLES	#12	10		
11	#8	20 GALLON			3600			1120	1	20	OFFICE 103, OFFICE 104, & CORRIDOR 105 RECEPTACLES	#12	12		
13	#12	CORRIDOR 106, OFFICE 107, EXTERIOR GFI, & HVAC DECK RECEPTACLES	20	1	1120			1120	1	20	OFFICE 108 AND ELECTRIC ROOM 109 RECEPTACLES	#12	14		
15	#12	WARMING KITCHEN 110 REFRIGERATOR RECEPTACLE	20	1	160			800	1	20	WARMING KITCHEN 110 AND EXTERIOR GFI RECEPTACLES	#12	16		
17	#12	WARMING KITCHEN 110 AND MEETING ROOM 112 RECEPTACLES	20	1	800			640	1	20	MEETING ROOM 112 CEILING FANS	#12	18		
19	#12	MEETING ROOM 112 AND EXTERIOR GFI RECEPTACLES	20	1	1120			480	1	20	FOYER 100, CORRIDOR 105, AND CORRIDOR 106 LIGHTS	#12	20		
21	#12	RESTROOMS 101 & 102 LIGHTS	20	1	192			-	1	20	SPARE	#12	22		
23	#12	OFFICES 103, 104, & 107 LIGHTS	20	1	384			384	1	20	OFFICE 108 & ELECTRIC ROOM 109 LIGHTS	#12	24		
25	#12	SPARE	20	1	-			60	1	20	EMERGENCY & EXIT LIGHTS	#12	26		
27	#12	WARMING KITCHEN 110 AND SUPPLIES 111 LIGHTS	20	1	192			270	1	20	EXTERIOR WALL-MOUNTED LIGHT FIXTURES AT DOORS	#12	28		
29	#12	MEETING ROOM 112 LIGHTS	20	1	576			360	1	20	PORCH 113 CAN LIGHTS	#12	30		
31	#12	SPARE	20	1	-			600	1	20	EXTERIOR WALL PACK FLOOD LIGHTS	#12	32		
33	#12	SPARE	20	1	-			-	1	20	SPARE	#12	34		
35	-	SPACE	-	-	-			-	1	20	SPACE	-	36		
37	-	SPACE	-	-	-			-	-	-	SPACE	-	38		
39	-	SPACE	-	-	-			-	-	-	SPACE	-	40		
41	-	SPACE	-	-	-			-	-	-	SPACE	-	42		
						TOTAL CONNECTED LOAD (VA)=54,218									
						As=27,108		Bs=27,110				GROUND BUS		GROUND WIRE (G)	

This document was created with Win2PDF available at <http://www.win2pdf.com>.  
The unregistered version of Win2PDF is for evaluation or non-commercial use only.  
This page will not be added after purchasing Win2PDF.