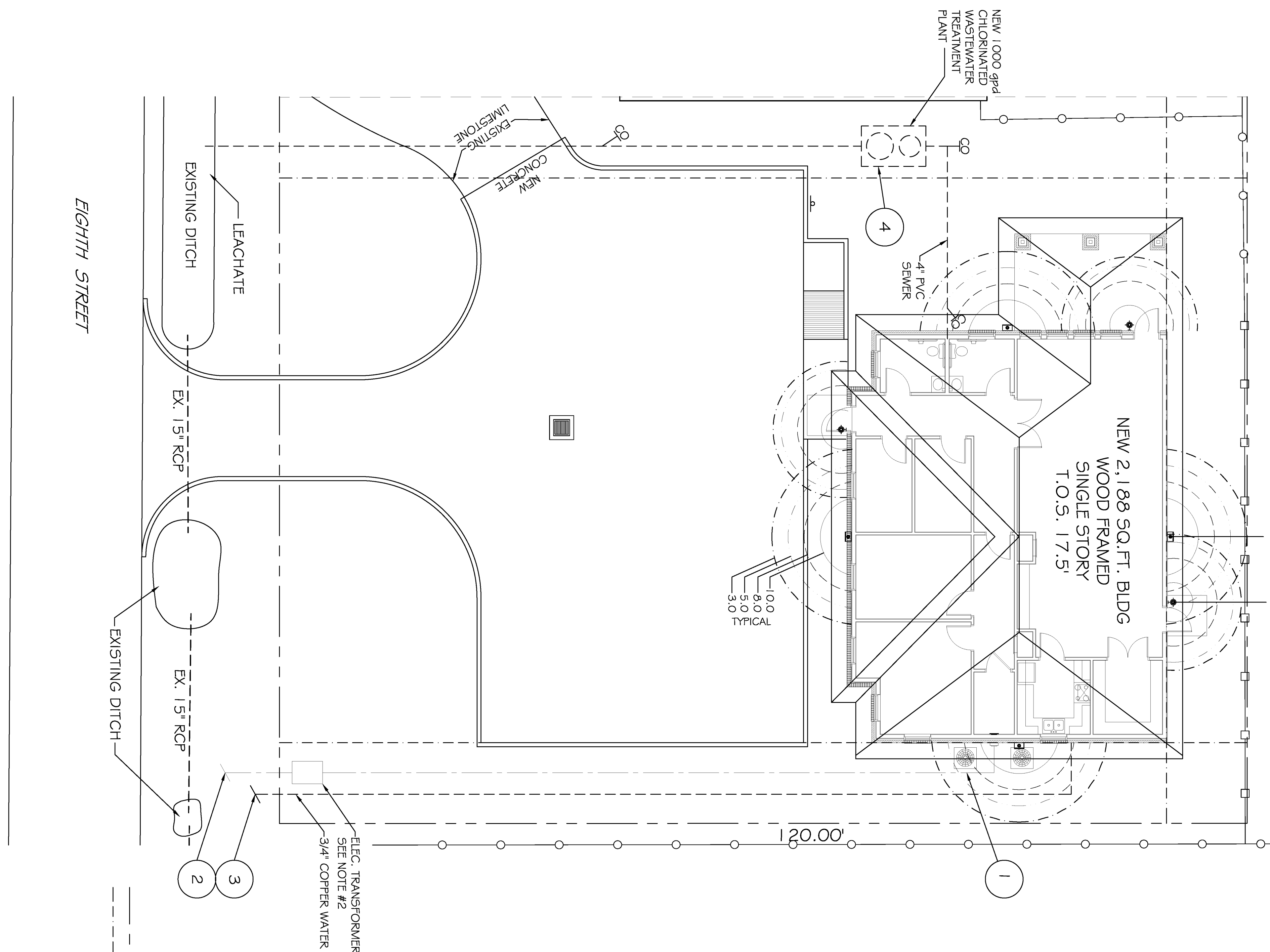
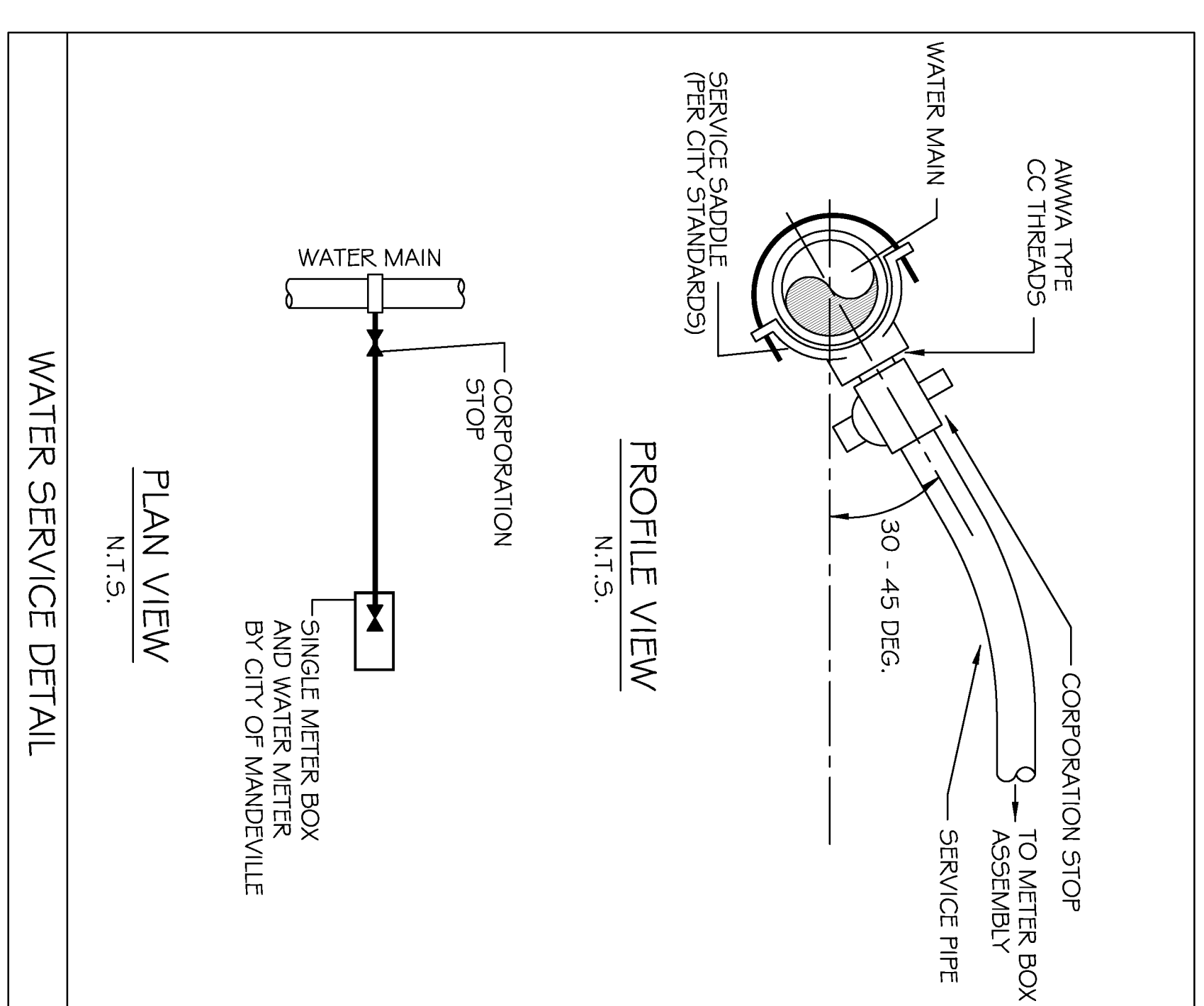
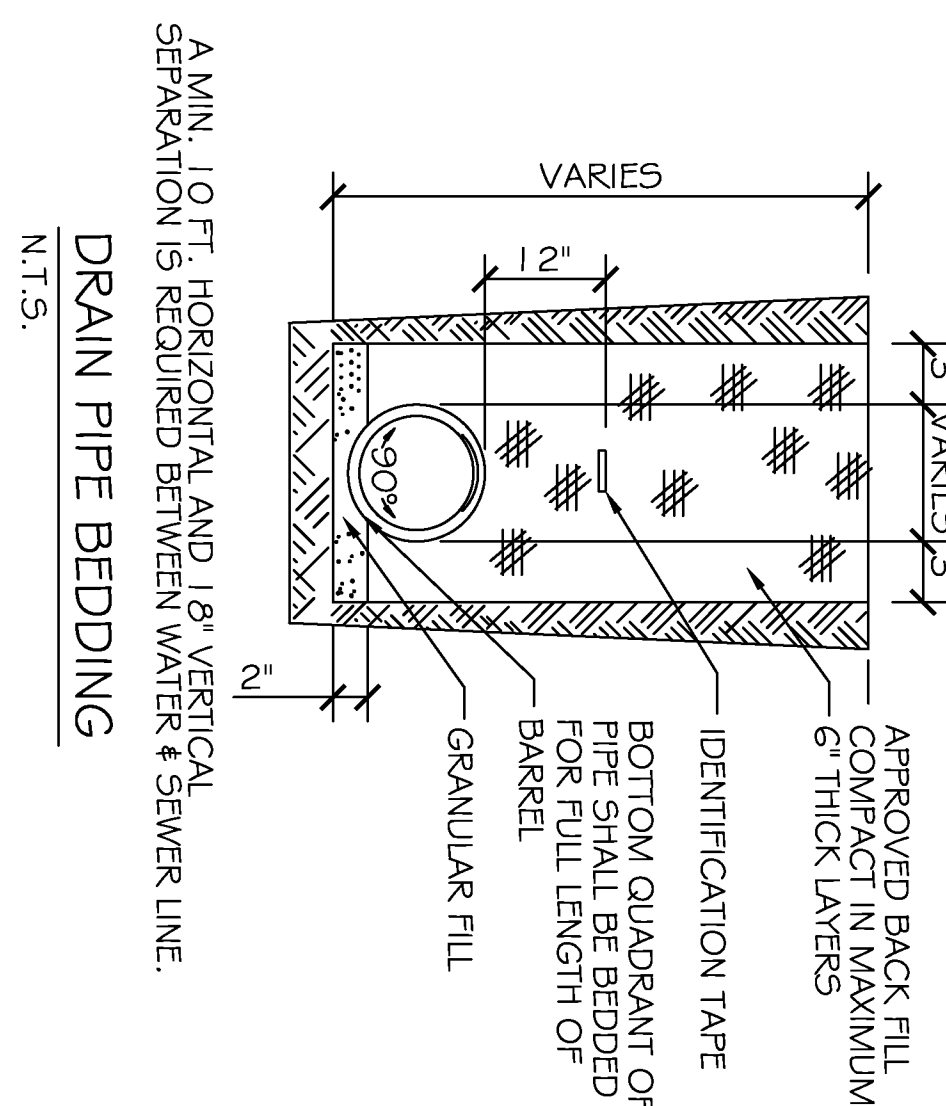


SITE LIGHTING

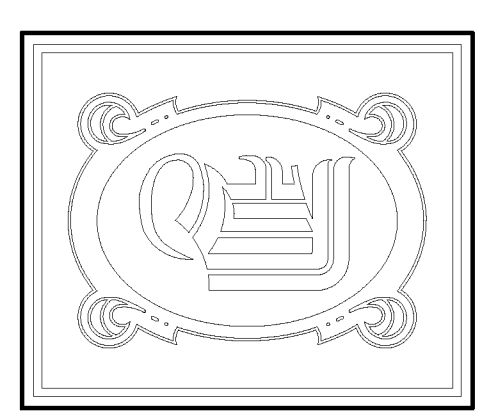
EXTERIOR LIGHTING SHALL BE SHADED OR INWARDLY DIRECTED IN SUCH A MANNER SO THAT NO DIRECT LIGHTING OR GLARE BE CAST BEYOND THE PROPERTY LINE. THE INTENSITY OF SUCH LIGHTING SHALL NOT EXCEED ONE FOOT CANDLE AS MEASURED AT THE ADJUTING PROPERTY LINE. (N/A)



- LEGEND**
- PROPERTY LINE
 - BUILDING SETBACK MINIMUM
 - NEW DROP INLET W/TEMP. SILT FENCE CONTROL JOINT 10x15'
 - EXPANSION JOINT 30x45' T.O. GRATE ELEVATION
 - INVERT ELEVATION
 - NEW ELEVATIONS
 - EXISTING ELEVATIONS
 - TEMPORARY SILT FENCING
 - NEW C/ CURB, SEE DETAIL THIS SHEET

- UTILITY NOTES: #**
1. 5GH, 80 PVC CONDUIT WHERE PIPE IS EXPOSED OUTSIDE OF BUILDING WALL, TRANSITION BACK TO SCH. 40 PVC @ 90° PVC ELBOW BELOW GRADE. ALL 90° FITTINGS TO BE 36" LONG SWEEP TYPE.
 2. COORDINATE WITH ELEC. COMPANY REGARDING ELECTRICAL SERVICE AND PLACEMENT OF TRANSFORMER.
 3. THE NEW WATER SERVICE INTO EXISTING WATER MAIN ON EIGHTH STREET, FIELD VERIFY LOCATION. SEE DETAIL THIS SHEET
 4. PROVIDE FULLY OPERATIONAL SEWER TREATMENT SYSTEM IN ACCORDANCE WITH MANUFACTURERS DETAILS AND RECOMMENDATIONS FOR ACTUAL EQUIPMENT INSTALLED.

UTILITY PLAN
SCALE: 1/8" = 1'-0"



DAMMON ENGINEERING, INC.
CHIEF ENGINEER
EMMETT DAMMON, P.E.
CHIEF ARCHITECT
ROBERT WILTSE

554 OLD SPANISH TRAIL
SLIDELL, LA, 70456
OFFICE: 985-649-5632
FAX: 985-641-5950

WEBSITE:
WWW.DAMMONENGINEERING.COM
EMAIL:
DAMMONENG@BELL.SOUTH.NET

ARCHITECTURE
ENGINEERING
STUDIES
PLANNING
INVESTIGATION
EXPERT WITNESS

PAUL REES
OFFICE BUILDING
2175 8TH. ST.
MANDEVILLE, LA
70471

UTILITY
PLAN

REV:

SCALE: AS NOTED
JOB#: 2104
DATE: 05-20-11
SHEET 6

C-5

OF 20