

**DAMMON**  
ENGINEERING, INC.

CHIEF ENGINEER  
EMMETT  
DAMMON, P.E.

CHIEF ARCHITECT  
ROBERT  
WILTSE

554 OLD SPANISH TRAIL  
SLIDELL, LA, 70458  
OFFICE: 985-649-5632  
FAX: 985-641-5950

WEBSITE:  
WWW.DAMMONENGINEERING.COM  
EMAIL:  
DAMMONENG@BELL.SOUTH.NET

ARCHITECTURE  
ENGINEERING  
STUDIES  
PLANNING  
INVESTIGATION  
EXPERT WITNESS

PAUL REES  
OFFICE BUILDING  
2175 8TH. ST.  
MANDEVILLE, LA  
70471

REFLECTED  
CEILING PLAN

REV:

SCALE: AS NOTED

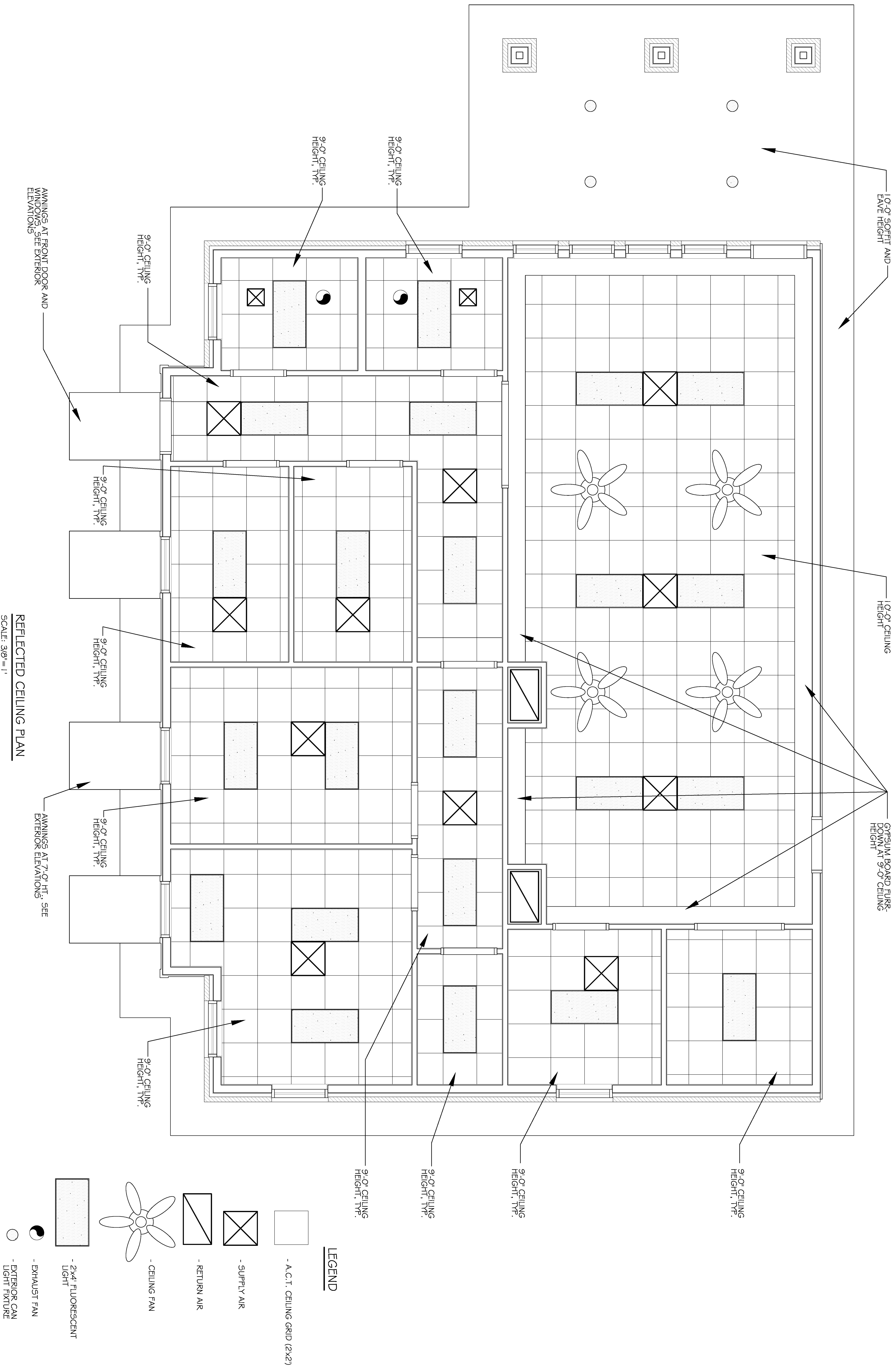
JOB#: 2104

DATE: 05-20-11

SHEET 14

A-5

OF 20



REFLECTED CEILING PLAN  
SCALE: 3/8"=1'

- LEGEND**
- A.C.T. CEILING GRID (2x2)
  - SUPPLY AIR
  - RETURN AIR
  - CEILING FAN
  - 2x4 FLUORESCENT LIGHT
  - EXHAUST FAN
  - EXTERIOR CAN LIGHT FIXTURE