

DAMMON ENGINEERING, INC.
 CHIEF ENGINEER
 ENAMETT DAMMON, P.E.
 CHIEF ARCHITECT
 ROBERT WILTSE

554 OLD SPANISH TRAIL
 SLIDELL, LA, 70458
 OFFICE: 985-649-5632
 FAX: 985-641-5950

WEBSITE:
 WWW.DAMMONENGINEERING.COM
 EMAIL:
 DAMMONEN@BELL.SOUTH.NET

ARCHITECTURE
 ENGINEERING
 STUDIES
 PLANNING
 INVESTIGATION
 EXPERT WITNESS

PAUL REES
 OFFICE BUILDING
 2175 8TH. ST.
 MANDEVILLE, LA
 70471

LIGHTING
 PLAN

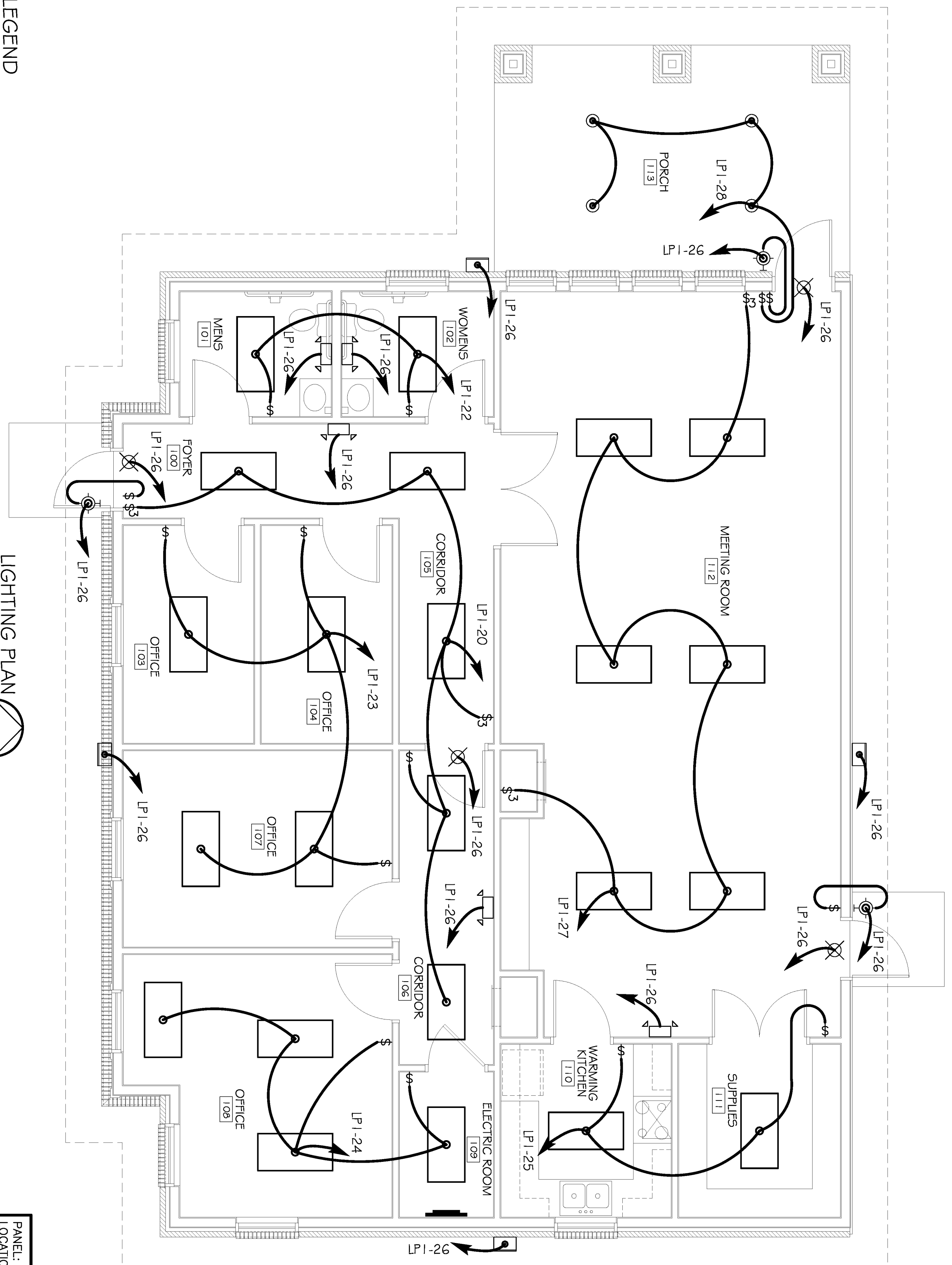
REV:
 SCALE: AS NOTED
 JOB#: 2104
 DATE: 05-20-11
 SHEET 19

CLECO Power LLC - Electrical Load Summary

Project Name: Paul Rees Office Building
 Project Address: 2275 8th. Street
 City / Town: Mandeville, Louisiana
 Intended Use: Office Building
 Requested Service: 240 Volts 1 ϕ Phase 3 Wires
 Service Entrance Size: 200 Amps
 HVAC Tonnage: 7.00 Tons
 Largest Motor: N/A HP (Note: Motors above 20 hp may require reduced voltage starting and are never recommended for use with 120/240V, 3 ϕ , 4W services.)

Total Building Square Footage: 2,188 Square Feet
 Individual Unit Square Footage: N/A Square Feet (Multiple Occupancy)
 Individual Unit Designation: N/A (Multiple Occupancy)

LOAD SOURCE	1 ϕ - kVA	3 ϕ - kVA	1 ϕ - kW	3 ϕ - kW
Building Lighting	2266	-	-	-
Electric Water Heating	7200	-	-	-
Heat Pumps	-	-	-	-
Supplemental Heat System	-	-	-	-
Air Conditioning Condensing Units	14400	-	-	-
Electrical Heating (Primary) - AHUs	21600	-	-	-
Cooking	-	-	-	-
Refrigeration	160	-	-	-
Receptacles (Standard)	7040	-	-	-
Receptacles (Computer)	-	-	-	-
Total Motors (Exclude HVAC)	-	-	810	-
Exterior Lighting	-	-	640	-
Miscellaneous - Ceiling Fans	-	-	-	-
Other (Specify)	-	-	-	-



LEGEND
 - 2x4' FLUORESCENT LIGHT (3 BULBS)
 - 3 BULBS @ 32 w EA. = 96 w PER LIGHT
 - EXIT LIGHT w/90 MIN. BATTERY BACKUP (92 w EA.)
 - EMERGENCY LIGHT w/ 90 MIN. BATTERY BACKUP (10.82 w EA.)
 - WALL MOUNTED EXTERIOR LIGHT FIXTURE (50 w EA.) WITH PHOTO-CELL
 - WALL MOUNTED EXTERIOR WALL PACK FLOOD LIGHT (75 w EA.) MH WITH PHOTO-CELL
 - CAN LIGHT WITH TRIM (90W)
 - SWITCH
 - 3 WAY SWITCH
 - POWER PANEL

LIGHTING PLAN
 SCALE: 1/4" = 1'

PANEL: LP-1
 LOCATION: PAUL REES OFFICE BUILDING ELECTRICAL CLOSET
 FEEDER SOURCE: CLECO

VOLTAGE: 120/240V, 200A 1 ϕ , 3W, MLO
 SURFACE MOUNTED W/EQUIPMENT GND BAR

CCT. THIN WIRE SIZE	LOAD DESCRIPTION	BREAKER AMP	POLE	LOAD (VA)	BREAKER AMP	LOAD DESCRIPTION	THIN WIRE SIZE	NOT. LOC.
1	AHU #1	45	2	5400	30	A/C COMPRESSOR #1	#8	4
3	AHU #1	45	2	5400	30	A/C COMPRESSOR #1	#8	4
5	AHU #2	45	2	5400	30	A/C COMPRESSOR #2	#8	6
7	WATER HEATER 20 GALLON	30	2	3600	30	3 1/2 TON	#8	8
9	CORRIDOR 106, OFFICE 107, EXTERIOR GFI, & HVAC DECK RECEPTACLES	20	1	1120	20	FOYER 100, RECEPTACLE, RESTROOMS 101, OFFICE 103, OFFICE 104, & CORRIDOR 105 RECEPTACLES	#12	10
11	WARNING KITCHEN 110 REFRIGERATOR	20	1	1280	20	OFFICE 108, ELECTRIC ROOM 109, AND EXTERIOR GFI RECEPTACLES	#12	12
13	MEETING ROOM 112 RECEPTACLES	20	1	800	20	WARNING KITCHEN 110 RECEPTACLES AND GFI RECEPTACLES	#12	14
15	MEETING ROOM 112 AND EXTERIOR GFI RECEPTACLES	20	1	1120	20	FOYER 100, CORRIDOR 105, AND CORRIDOR 106 LIGHTS	#12	16
17	OFFICES 103, 104, & 107 LIGHTS	20	1	384	20	OFFICE 108 & ELECTRIC ROOM 109 LIGHTS	#12	18
19	WARNING KITCHEN 110 AND SUPPLIES 111 LIGHTS	20	1	192	20	EXIT, EMERGENCY, EXTERIOR WALL-MOUNTED, & EXTERIOR WALL PACK FLOOD LIGHTS	#12	24
21	MEETING ROOM 112 LIGHTS	20	1	576	20	PORCH 113 CAN LIGHTS	#12	22
23	SPARE	20	1	-	20	SPARE	#12	22
25	SPARE	20	1	-	20	SPARE	#12	24
26	SPARE	20	1	-	20	SPARE	#12	24
27	SPARE	20	1	-	20	SPARE	#12	26
29	SPARE	20	1	-	20	SPARE	#12	28
31	SPARE	20	1	-	20	SPARE	#12	30
33	SPARE	20	1	-	20	SPARE	#12	32
35	SPARE	20	1	-	20	SPARE	#12	34
37	SPARE	20	1	-	20	SPARE	#12	36
39	SPARE	20	1	-	20	SPARE	#12	38
41	SPARE	20	1	-	20	SPARE	#12	40
				TOTAL CONNECTED LOAD (VA)=53,986				
				A# = 26,972	GROUND BUS (G)			
				B# = 26,984				