

DAMMON
ENGINEERING, INC.

CHIEF ENGINEER
EMMETT
DAMMON, P.E.

CHIEF ARCHITECT
ROBERT
WILTSE

554 OLD SPANISH TRAIL
SLIDELL, LA. 70458
OFFICE: 985-649-5832
FAX: 985-641-5950

WEBSITE:
WWW.DAMMONENGINEERING.COM

EMAIL:
DAMMONENG@BELLSOUTH.NET

ARCHITECTURE

ENGINEERING

STUDIES

PLANNING

INVESTIGATION

EXPERT WITNESS

TIVOLI PLAZA
RENOVATION

1265 GAUSE
BOULEVARD
SLIDELL,
LOUISIANA
70458

DEMO
PLAN

REV:

SCALE: AS NOTED

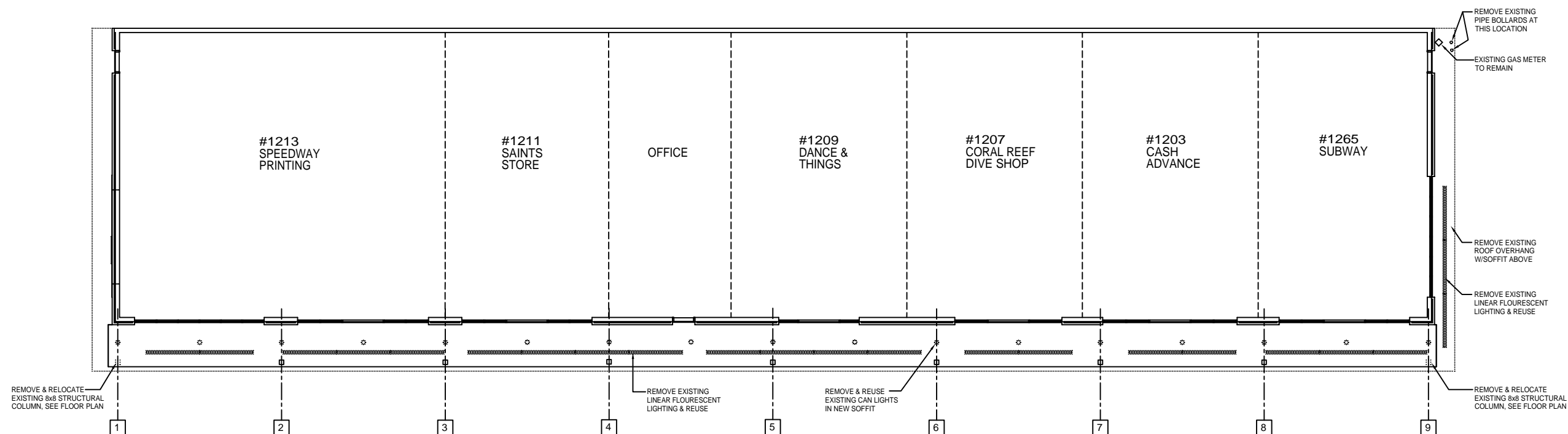
JOB#: 2117

DATE: 07-20-11

SHEET 2

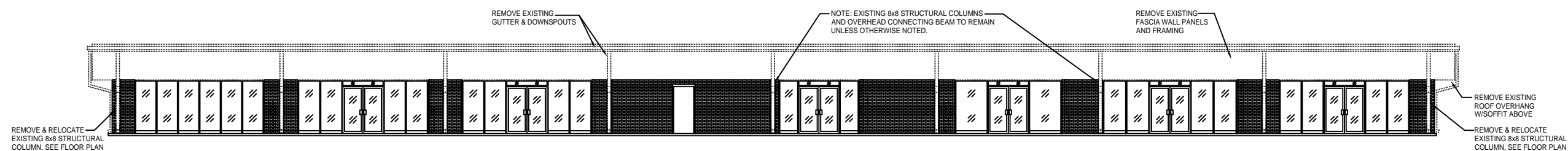
D-1

OF 7



REFLECTED SOFFIT DEMO PLAN

SCALE: 1/8"=1'



FRONT EXTERIOR ELEVATION DEMO

SCALE: 1/8"=1'