

**DAMMON ENGINEERING, INC.**

CHIEF ENGINEER  
EMMETT  
DAMMON, P.E.

CHIEF ARCHITECT  
ROBERT  
WILTSE

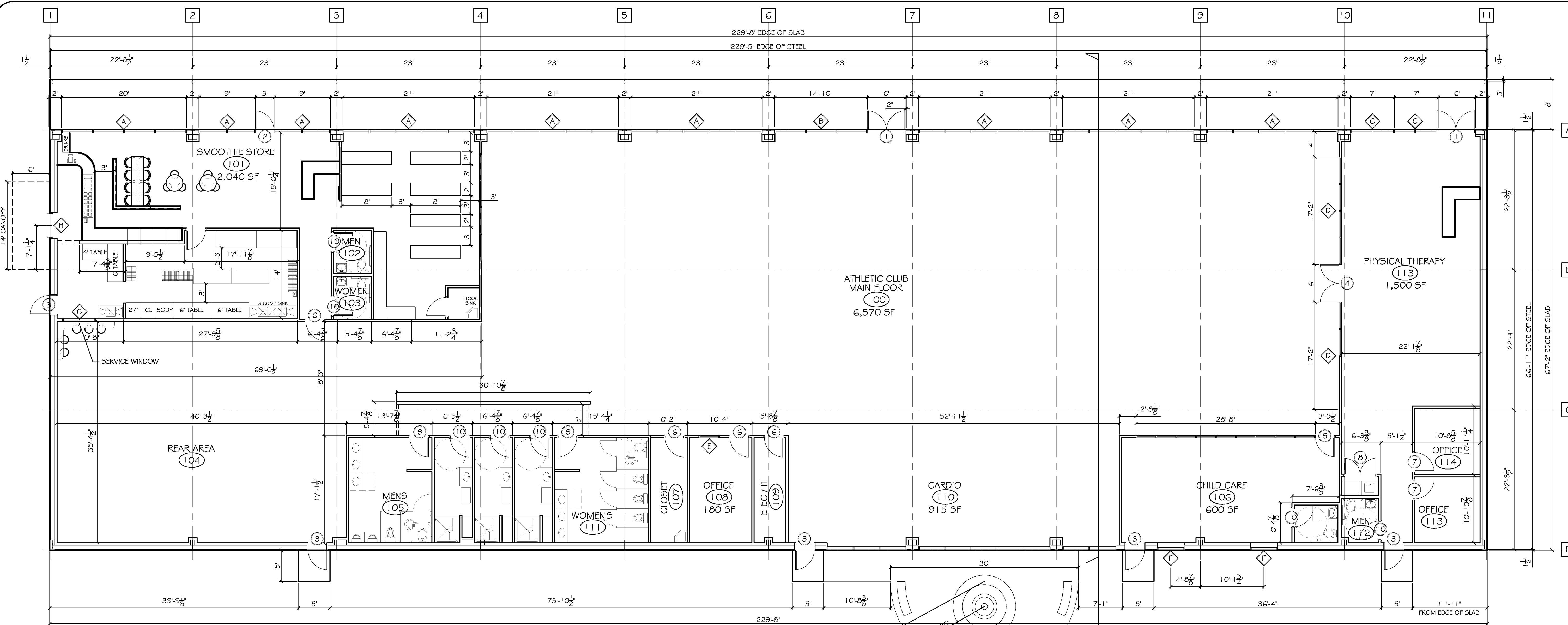
554 OLD SPANISH TRAIL  
SLIDELL, LA. 70458  
OFFICE: 985-649-5832  
FAX: 985-641-5950

WEBSITE:  
WWW.DAMMONENGINEERING.COM

EMAIL:  
DAMMONENG@BELLSOUTH.NET

ARCHITECTURE  
ENGINEERING  
STUDIES  
PLANNING  
INVESTIGATION  
EXPERT WITNESS

**SLIDELL ATHLETIC CLUB**



**BUILDING FLOOR PLAN**  
SCALE: 1/8" = 1' (15,500 SQ. FT.)

FINISH SCHEDULE						
ROOM NUMBER	ROOM NAME	WALLS	FLOOR	WALL BASE	CLG	COMMENTS
100	MAIN FLOOR					CT
101	STORE					
102	MEN					
103	WOMEN					
104	REAR AREA					
105	MENS					
106	CHILD CARE					
107	CLOSET					
108	OFFICE					
109	WOMEN'S AREA					
110	WOMENS					
111	MEN					
112	CLOSET					
113	PHYSICAL THERA.					

**LEGEND:**  
 GWB GYPSUM WALL BOARD  
 CT CEILING TILE, 2'x4'  
 RB RUBBER BASE 4" HIGH  
 WB WOOD BASE  
 VCT VINYL COMPOSITION TILE

WINDOW SCHEDULE						
MARK	SIZE	WINDOW TYPE	FRAME	GLASS	LITES	REMARKS
A	OVERALL UNIT SIZE VARIES, SEE PLAN NOM. PANE 4'x10'	ALUMINUM STOREFRONT	ALUMINUM 2" x 6"	LOW E		SEE EXTERIOR ELEVATIONS
B	OVERALL UNIT SIZE = 14'-10" NOM. PANE 4'-8"x10'	ALUMINUM STOREFRONT	ALUMINUM 2" x 6"	LOW E		SEE EXTERIOR ELEVATIONS
C	OVERALL UNIT SIZE = 7" NOM. PANE 3'-3"x10'	ALUMINUM STOREFRONT	ALUMINUM 2" x 6"	LOW E		SEE EXTERIOR ELEVATIONS
D	OVERALL UNIT SIZE = 17'-2" NOM. PANE 4'-1"x4'	ALUMINUM STOREFRONT @ 36" ABOVE FFE	ALUMINUM 2" x 4-1/2"	LOW E		INTERIOR WINDOW WALL
E	OVERALL UNIT SIZE = 28'-8" NOM. PANE 3'x4'	ALUMINUM STOREFRONT @ 36" ABOVE FFE	ALUMINUM 2" x 4-1/2"	LOW E		INTERIOR WINDOW WALL
F	2' x 4'	HOLLOW METAL FIXED	HOLLOW METAL	LOW E		
G	PR. SERVICE WINDOW SIZE = 5'-0"x4'-0"	ALUMINUM HORZ. SLIDE SERVICE WINDOW	ALUMINUM 2" x 4-1/2"	LOW E		
H	SERVICE WINDOW SIZE = 4'-2"x4'	ALUMINUM HORZ. SLIDE SERVICE WINDOW	ALUMINUM 2" x 4-1/2"	LOW E		
I	2' x 3'	HOLLOW METAL FIXED	HOLLOW METAL	LOW E		ONE-WAY SECURITY WINDOW

**WINDOW SCHEDULE NOTES:**  
 1. GLAZING TO BE 3/8" THK. LAMINATED LOW E.

DOOR & HARDWARE SCHEDULE						
MARK	SIZE	DOOR TYPE	FRAME	HWDR. NO.	STC	REMARKS
<b>EXTERIOR DOORS</b>						
1	PR. 3/0x7/0	STORE FRONT	TO MATCH DOOR	1	NA	STOREFRONT UNIT. PROVIDE 36" TRANSOM SEE ELEVATIONS
2	3/0x7/0	STORE FRONT	TO MATCH DOOR	1	NA	STOREFRONT UNIT. PROVIDE 36" TRANSOM SEE ELEVATIONS
3	3/0x6/8	FLUSH GALV. HOL. MET. STEEL INSUL.	GALV. PTD. HOL. MET.	1	NA	GALVANIZING TO BE G90
<b>INTERIOR DOORS</b>						
4	PR. 3/0x7/0	STORE FRONT	TO MATCH DOOR	2	NA	STOREFRONT UNIT. TO MATCH INTERIOR WINDOW WALL SYSTEM
5	3/0x7/0	STORE FRONT	TO MATCH DOOR	2	NA	STOREFRONT UNIT. TO MATCH INTERIOR WINDOW WALL SYSTEM
6	3/0x6/8	FLUSH SOLID CORE WD.	PTD. HOL. MET.	4	NA	STAIN SELECT BY OWNER
7	PR. 3/0x6/8	FLUSH SOLID CORE WD.	PTD. HOL. MET.	4	NA	STAIN SELECT BY OWNER
8	PR. 3/0x6/8	FLUSH SOLID CORE WD.	PTD. HOL. MET.	3	NA	STAIN SELECT BY OWNER
9	3/0x6/8	FLUSH SOLID CORE WD.	PTD. HOL. MET.	3	NA	STAIN SELECT BY OWNER
10	3/0x6/8	FLUSH SOLID CORE WD.	PTD. HOL. MET.	5	NA	STAIN SELECT BY OWNER
11	4/0x7/0	CASED OPENING	NA	NA	NA	

**DOOR HARDWARE SCHEDULE:**  
 1. AUTO CLOSER, PANIC BAR, AIR RESISTANT METAL THRESHOLD, WEATHERSTRIP, DOOR STOP, EXTERIOR CYLINDER LOCK, BALL BEARING U532D HINGES.  
 2. AUTO CLOSER, DOOR STOP, CYLINDER LOCK, BALL BEARING U532D HINGES.  
 3. PASSAGE LOCK, DOOR STOP, U526D HINGES.  
 4. KEYPAD HANDLE, DOOR STOP, U526D HINGES.  
 5. AUTO CLOSER, DOOR STOP, PRIVACY LOCK, BALL BEARING U526D HINGES.

**FLOOR PLAN**

REV:  
 SCALE: AS NOTED  
 JOB#:  
 DATE: 06-22-11  
 SHEET 1

A-1

OF 1