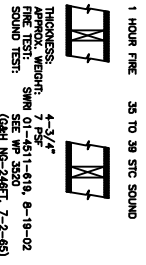
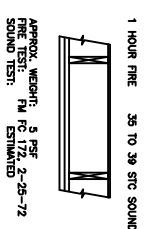


**GA FILE NO. WP 3514** **GENERIC**  
 ONE LAYER 5/8" TYPE X Gypsum Wallboard or Gypsum Kerf Board (GKB) with 1/2" Gypsum Board Tape applied to all joints and corners. 2x4 wood studs 16" O.C. with 1-1/4" Type W Drywall Screws 12" O.C.  
 JOINTS STaggered 18" ON OPPOSITE SIDES (LOAD BEARING)



THICKNESS: 5/8"  
 FIRE TEST: SMR 01-6111-619, 6-18-02  
 SOUND TEST: SEE WP 3520 (GKH-W-24871, 7-2-85)

**GA FILE NO. FC 5406** **GENERIC**  
 BASE LAYER 5/8" TYPE X Gypsum Wallboard applied at right angles to studs. 1/2" Gypsum Board Tape applied to all joints and corners. 5 Drywall Screws 24" O.C. Face Layer 5/8" Type X Gypsum Wallboard or Gypsum Veneer Base applied at right angles to studs with 1-1/4" Type S Drywall Screws 12" O.C. at joints with 1-1/4" Type S Drywall Screws 12" O.C. at all other locations. 1/2" Gypsum Board Tape applied to all joints and corners. JOINTS OFFSET 24" FROM BASE LAYER JOINTS. WOOD JOINTS SUPPORTING 1/2" Gypsum Board with EXTERIOR GLE applied to all joints and corners. 1/2" Gypsum Board with EXTERIOR GLE applied to all joints and corners. HOUR FIRE RESISTANCE PROTECTION FOR WOOD FRAMING, INCLUDING TRUSSES.

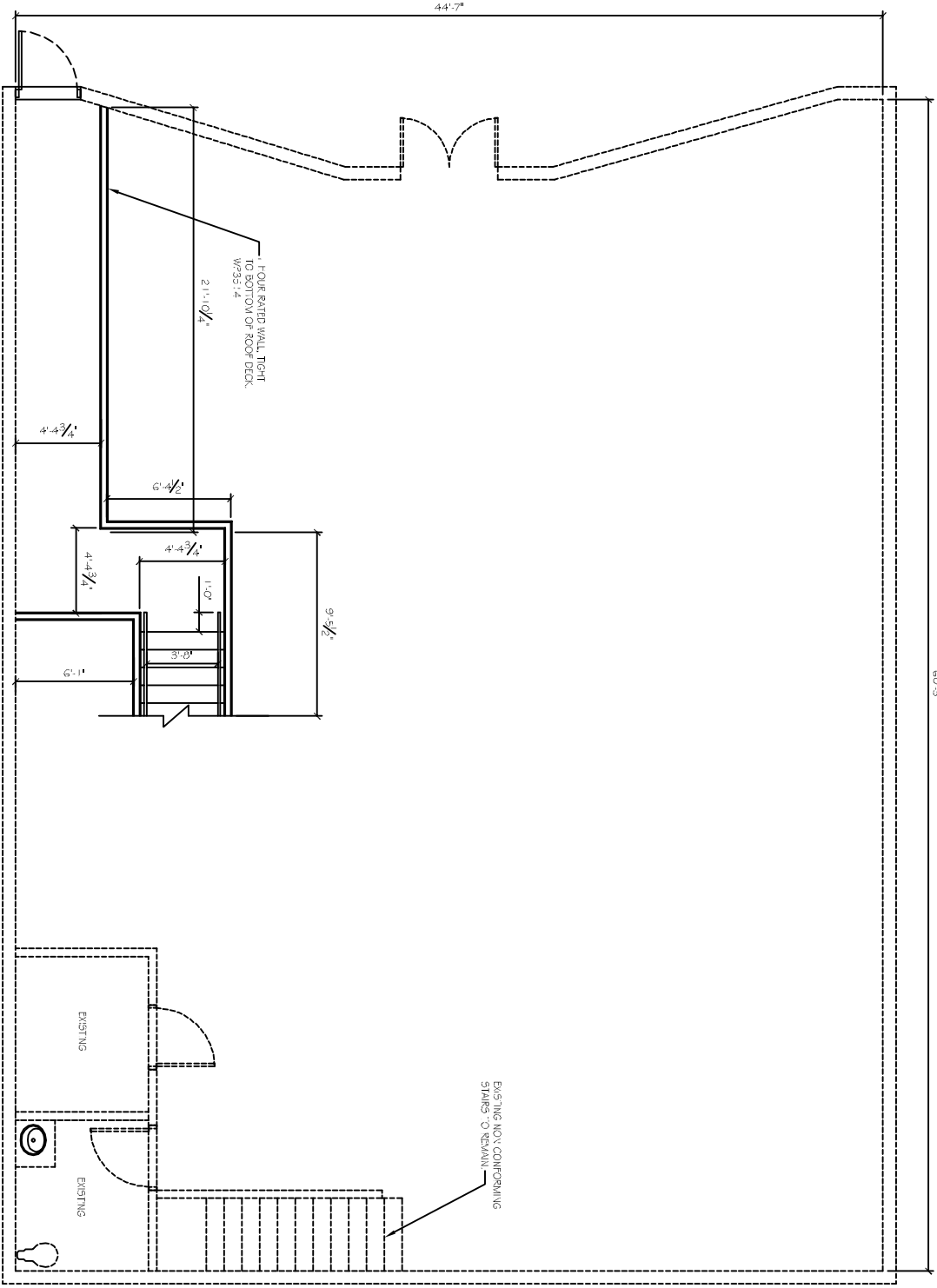
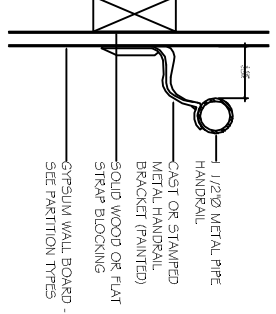


APPROX. WEIGHT: 8 PSF  
 APPROX. WIND: 74 MPH ESTIMATED  
 SOUND TEST: SEE WP 3520

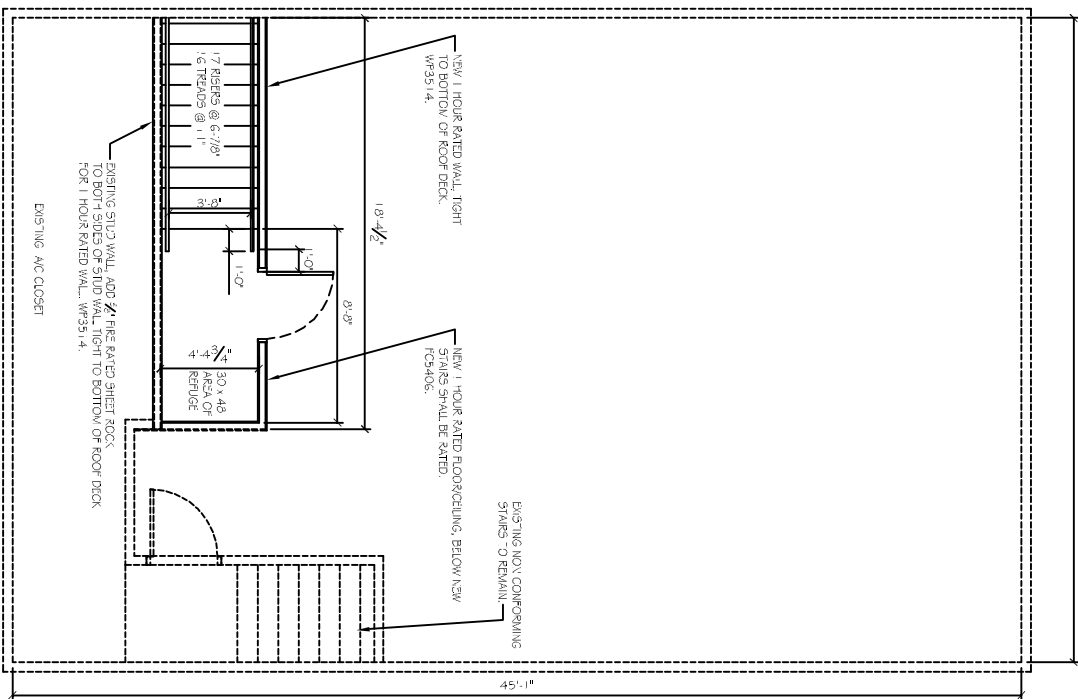
**ONE HOUR RATED WALL**

**ONE HOUR RATED CEILING**

**HANDRAIL DETAIL**



**1 FIRST FLOOR PLAN**  
 SCALE: 1/4" = 1'-0"



**2 SECOND FLOOR PLAN**  
 SCALE: 1/4" = 1'-0"

**DAMMON ENGINEERING, INC.**  
*Architects & Engineers*

Chief Architect: Kevin J. Kinchen, NCARB  
 Chief Engineer: Brian Mistich, PE  
 554 Old Spanish Trail  
 Slidell, LA 70458

www.dammonengineering.com  
 info@dammonengineering.com  
 PH: 985.649.5832  
 F: 985.641.5950

REVISIONS		DATE
#	DESCRIPTION	

**PRELIMINARY NOT FOR CONSTRUCTION**

**JULIE JUNEVA**  
**ARTISTS' GALLERIES de Juneau**

2143 FIRST ST.  
 SLIDELL, LOUISIANA 70458

JOB No: 2220 DATE: 10-24-14  
 DRAWN BY: JTL CHECKED BY: CKD