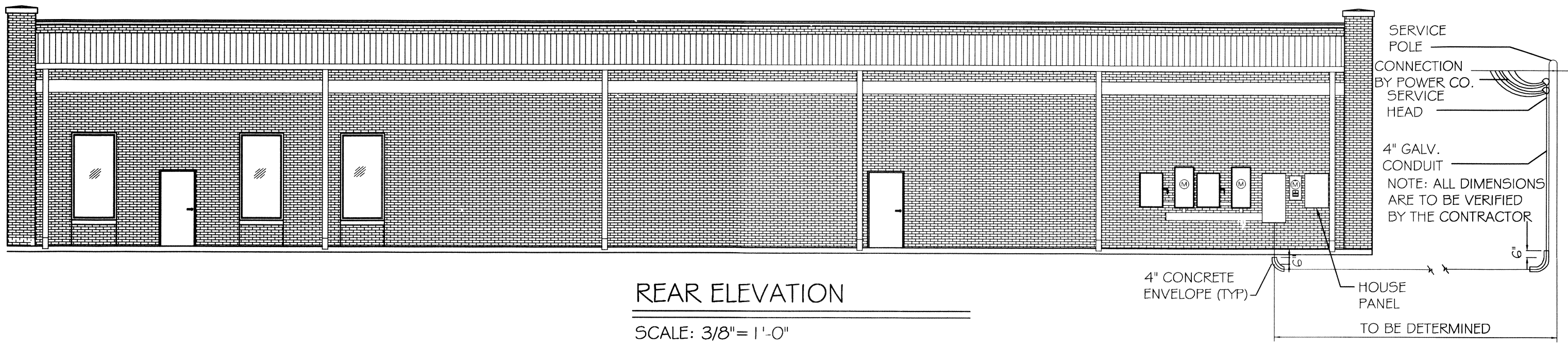


CKT. NO.	THIN WIRE SIZE	LOAD DESCRIPTION	BREAKER AMP	POLE	LOAD (VA)	A#	B#	C#	LOAD (VA)	BREAKER AMP	POLE	LOAD DESCRIPTION	THIN WIRE SIZE	CKT. NO.
1	#12	HOUSE LIGHTING	20	1	800				200	1	20	HOUSE LIGHTING	#12	2
3	#12	GFI OUTLET	20	1	800				160	1	20	GFI OUTLET	#12	4
5	#12	SPARE	20	1	-				-	1	20	SPARE	#12	6
7	#12	SPARE	20	1	-				-	1	20	SPARE	#12	8
9	-	SPACE	-	-	-				-	-	-	SPACE	-	10
11	-	SPACE	-	-	-				-	-	-	SPACE	-	12
13	-	SPACE	-	-	-				-	-	-	SPACE	-	14
15	-	SPACE	-	-	-				-	-	-	SPACE	-	16
17	-	SPACE	-	-	-				-	-	-	SPACE	-	18
19	-	SPACE	-	-	-				-	-	-	SPACE	-	20
21	-	SPACE	-	-	-				-	-	-	SPACE	-	22
23	-	SPACE	-	-	-				-	-	-	SPACE	-	24

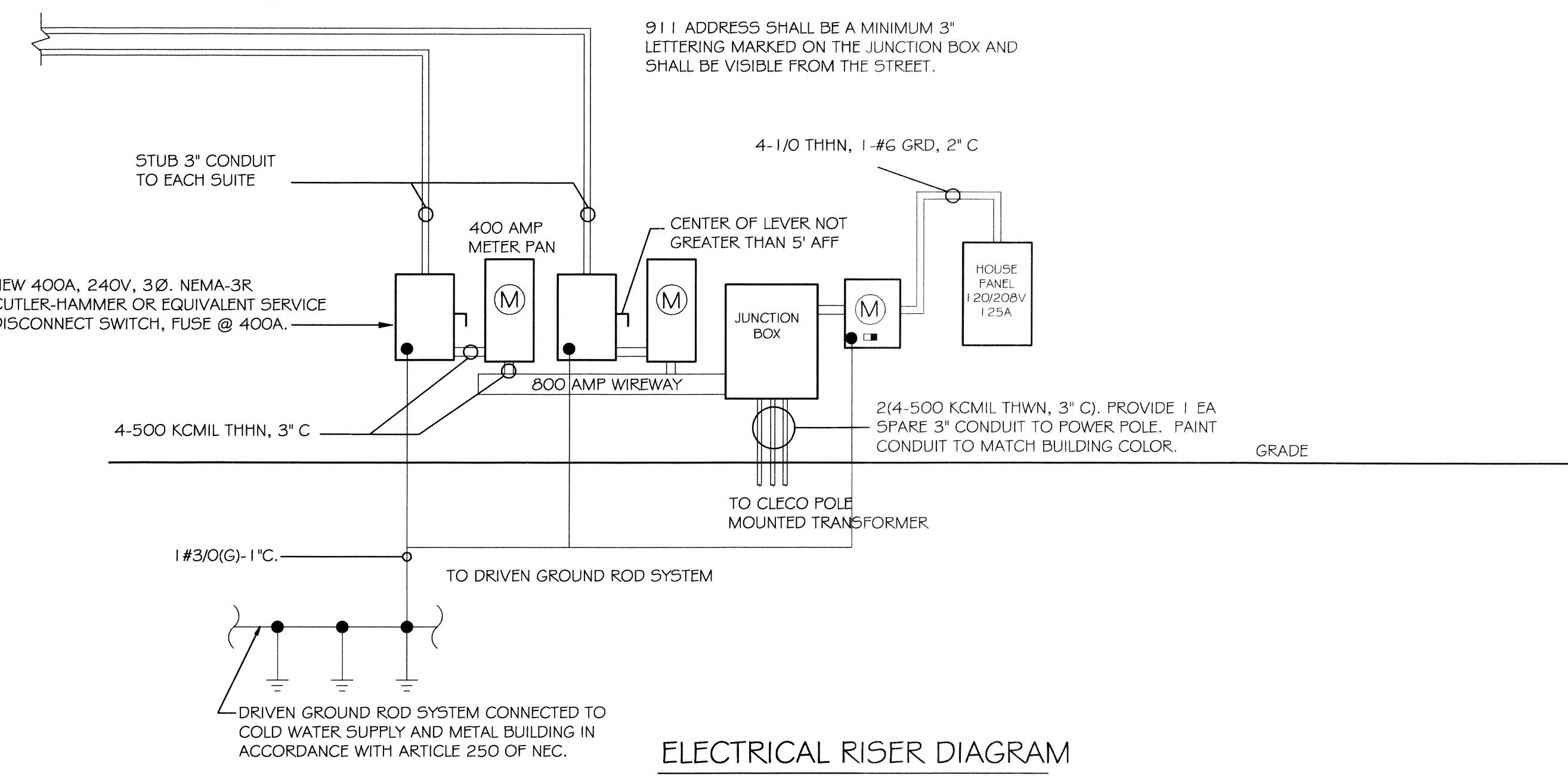
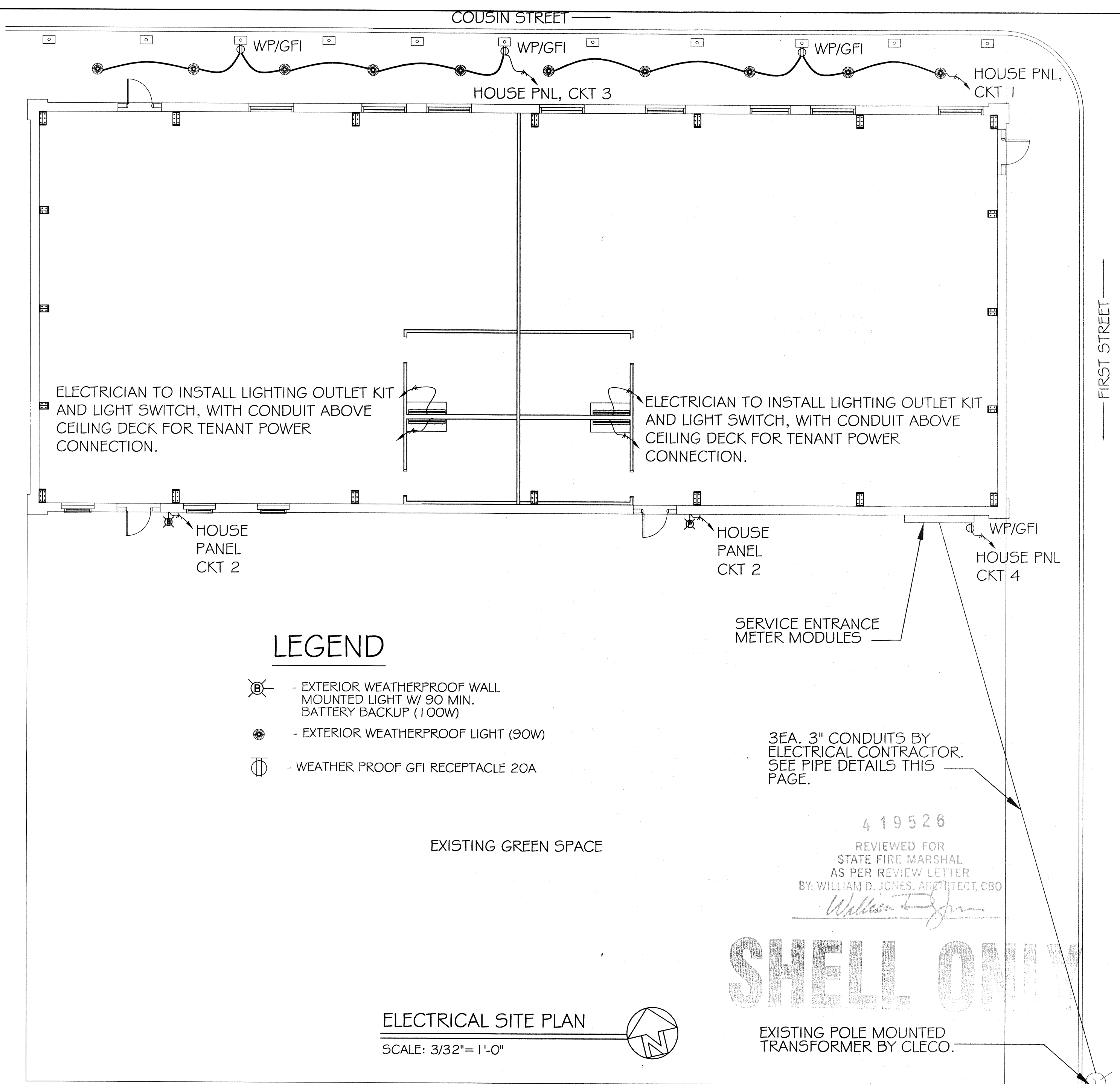
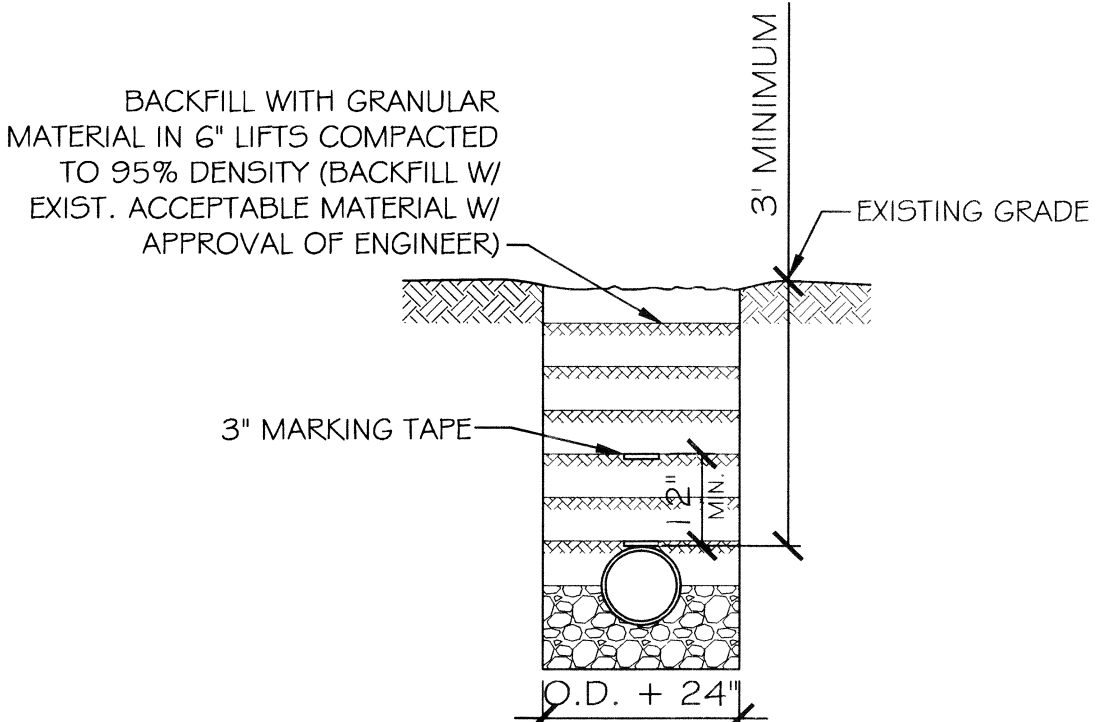
VOLTAGE: 208/120V, 125A 3Ø, 4W MLO
 LOCATION: REAR WALL ENCLOSURE SURFACE MOUNTED W/EQUIPMENT GND BAR
 FEEDER SOURCE: CLECO

TOTAL CONNECTED LOAD (VA)=67200
 A#=1000 B#=1000 C#=0

SOLID NEUTRAL NEUTRAL WIRE (W)
 GROUND BUS GROUND WIRE (G)



- UTILITY NOTES:
- SCH. 80 PVC CONDUIT WHERE PIPE IS EXPOSED ABOVE GRADE. TRANSITION TO SCH. 40 PVC BELOW GRADE. ALL 90° ELBOWS TO BE LONG SWEEP TYPE.
 - 120/208V 3Ø 800A SERVICE FROM UTIL. CO., FEEDER BY UTIL. CO TO FIRST JUNCTION BOX. FIELD LOCATE TRANSFORMER ON POLE AND COORDINATE WITH ELEC. COMPANY REGARDING NEW ELECTRICAL SERVICE CONNECTION.



- ELECTRICAL NOTES
- ALL WORK SHALL CONFORM TO THE LATEST EDITION OF THE NATIONAL ELECTRICAL CODE, THE GOVERNING ELECTRICAL CODE AND ALL OTHER INSPECTION DEPARTMENTS HAVING JURISDICTION. OBTAIN CERTIFICATES OR APPROVAL WHERE REQUIRED.
 - ALL MATERIALS FURNISHED SHALL BE NEW AND SHALL BE U.L. LISTED.
 - THE DRAWINGS INDICATE SIZE AND GENERAL LOCATION OF WORK. SCALE DIMENSIONS SHALL NOT BE USED. THE EXACT LOCATION AND LOCATION OF ALL LIGHTING FIXTURES, RECEPTACLES AND TELEPHONE OUTLETS, ETC. SHALL BE DETERMINED BY ACTUAL CONDITIONS IN THE FIELD.
 - PRIOR TO BIDDING, CONTRACTOR SHALL VISIT THE JOB SITE AND FAMILIARIZE THEMSELVES WITH THE EXISTING CONDITIONS.
 - ELECTRICAL CONTRACTOR SHALL COORDINATE HIS WORK WITH OTHER TRADES AND WITH OTHER CONTRACTORS WHOSE WORK MAY AFFECT THIS INSTALLATION.
 - ELECTRICAL CONTRACTOR SHALL COORDINATE INCOMING ELECTRICAL SERVICE WITH UTILITY COMPANY AND INCLUDE IN HIS BID ALL CHARGES AND FEES INCURRED IN MODIFICATIONS.
 - WHERE MORE THAN ONE SWITCH OCCURS IN THE SAME LOCATION, THEY SHALL BE INSTALLED IN A GANG TYPE BOX UNDER ONE COVER PLATE.
 - ELECTRICAL CONTRACTOR SHALL COORDINATE THE TELEPHONE INSTALLATION WITH THE TELEPHONE COMPANY AND THE GENERAL CONTRACTOR.
 - ELECTRICAL CONTRACTOR, BEFORE INSTALLING ANY OF THE WORK, SHALL SEE THAT IT DOES NOT INTERFERE WITH CLEARANCES REQUIRED FOR FINISHED COLUMNS, HUNG CEILINGS, PLASTER, PARTITIONS, WALLS, ETC. AS SHOWN IN THE ARCHITECTURAL DRAWINGS AND DETAILS. IF ANY WORK IS INSTALLED AND IT LATER DEVELOPS THAT SUCH DETAILS OR DESIGN CANNOT BE FOLLOWED, THE CONTRACTOR, AT HIS OWN EXPENSE, SHALL MAKE SUCH CHANGES IN THE WORK AS DIRECTED BY THE ARCHITECT, AS WELL AS TO PERMIT THE INSTALLATION OF THE ARCHITECTURAL WORK AS SHOWN ON THE PLANS AND DETAILS.
 - PERFORM TEST REQUIRED BY THE OWNER OR THE ENGINEER IN CONNECTION WITH THE OPERATION OF THE ELECTRICAL SYSTEM IN THE BUILDING.
 - ALL TESTS SHALL BE MADE IN ACCORDANCE WITH THE LATEST STANDARD OF THE IEEE AND THE NATIONAL ELECTRICAL CODE.
 - MINIMUM CONDUCTOR SIZE SHALL BE #12, 600V INSULATION. MINIMUM SIZE CONDUIT SHALL BE 3/4" EMT FOR INTERIOR USE, AND 3/4" RIGID ALUMINUM FOR EXTERIOR USE. USE TYPE MC CABLE COPPER, FOR LIGHTS. EXTERIOR FITTINGS SHALL BE CAST BOXES AND COVERS. INTERIOR FITTINGS SHALL BE CAST WHERE EXPOSED ON WALLS. STAMPED BOXES MAY BE USED ABOVE CEILINGS IN AIR CONDITIONED SPACES. WHERE LAY IN FIXTURES ARE IN USE, USE 1/4" ALLOWED FOR 6" WIDTH.
 - CONTRACTOR SHALL INSTALL WIRING AND OTHER CIRCUIT COMPONENTS TO MATCH EQUIPMENT ACTUALLY INSTALLED.
 - INSTALL GROUND FAULT RECEPTACLES AT RECEPTACLE LOCATIONS WITHIN 5' OF SINKS OR LAVATORIES, AND AT EXTERIOR LOCATIONS. EXTERIOR RECEPTACLES SHALL ALSO BE WATERPROOF.
 - BONDING AND GROUNDING SHALL BE IN ACCORDANCE WITH NFPA 70:230-63, NFPA 250-23, 250-71 & 250-72.
 - GROUND NEUTRAL IN ACCORDANCE WITH NFPA 70:250-23b.
 - FUSES SHALL BE ITT CLASS K5, 250 VOLT, 200,000 AMP INTERRUPTING CAP.
 - PROVIDE SERVICES OF A FIRE/SMOKE DETECTION AND ALARM COMPANY TO DESIGN AND INSTALL ALARM SYSTEM TO MEET REQUIREMENTS OF THE STATE FIRE MARSHAL.
 - EXTERIOR LIGHTING SHALL BE SHADED OR INWARDLY DIRECTED IN SUCH A MANNER SO THAT NO DIRECT LIGHTING OR GLARE IS CAST BEYOND THE PROPERTY LINE. THE INTENSITY OF SUCH LIGHTING SHALL NOT EXCEED ONE FOOT CANDLE AS MEASURED AT THE ADJUTING PROPERTY LINE.
 - ALL ELECTRICAL, MECHANICAL AND PLUMBING PENETRATING FIRE PARTITIONS SHALL BE FIRE CAULKED. (PENETRATIONS THROUGH RATED CONSTRUCTION SHALL BE SEALED WITH A MATERIAL CAPABLE OF PREVENTING THE PASSAGE OF FLAMES AND HOT GASES WHEN TESTED IN ACCORDANCE WITH ASTM-E814.)

DAMMON ENGINEERING
 Architects & Engineers

CHIEF ENGINEER: EMMETT DAMMON, P.E.
 CHIEF ARCHITECT: ROBERT WILSON
 PHONE: 985-645-5832
 FAX: 985-641-5950

OLDE TOWN SLIDELL FIRE DAMAGE REHABILITATION
 227 & 225 COUSIN STREET
 SLIDELL, LA 70458

JOB No: 2146 DATE: 07-26-2012 CHECKED BY: BSN
 DRAWN BY: BSN

REVISIONS

#	DESCRIPTION	DATE

ELECTRICAL PLAN

SHEET No: 8 OF 9

E-1