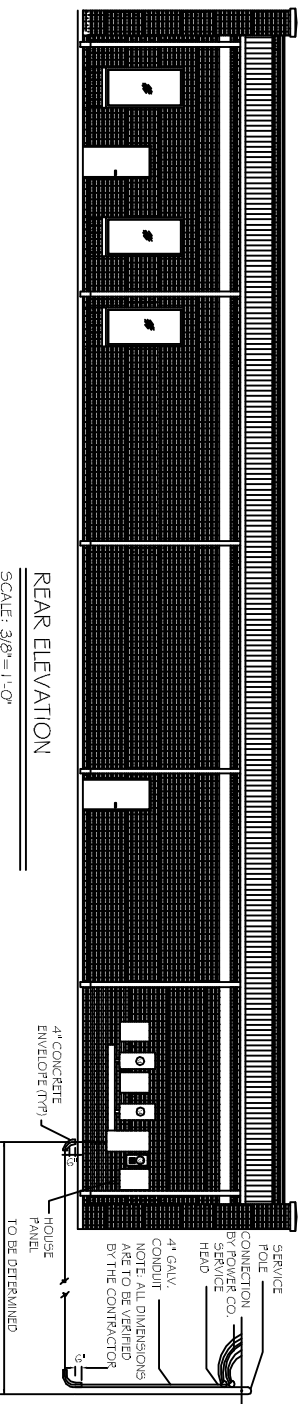


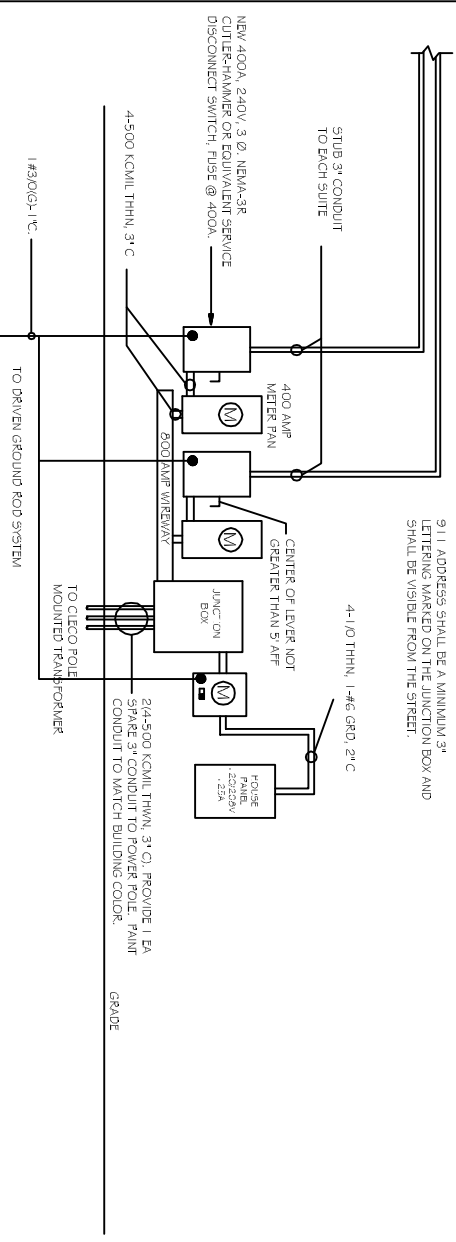
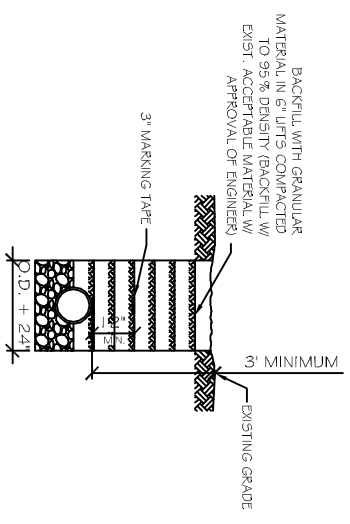
PANEL HOUSE											
LOCATION: REAR WALL											
FEEDER SOURCE: CLECO											
NO.	TYPE	LOAD DESCRIPTION	SEVERITY	LOAD	AMP	NO. OF	POLE	LOAD DESCRIPTION	TYPE		
		LOCATION	AMP	NO.	POLE	NO.	AMP	LOCATION	NO.		
1	#12	HOUSE LIGHTING	20	1	800	200	1	20	#12		
2	#12	GR OUTLET	20	1	800	200	1	20	#12		
3	#12	GR OUTLET	20	1	800	200	1	20	#12		
4	#12	SPACE	20	1	800	200	1	20	#12		
5	#12	SPACE	20	1	800	200	1	20	#12		
6	#12	SPACE	20	1	800	200	1	20	#12		
7	#12	SPACE	20	1	800	200	1	20	#12		
8	#12	SPACE	20	1	800	200	1	20	#12		
9	-	SPACE	-	-	-	-	-	-	-		
10	-	SPACE	-	-	-	-	-	-	-		
11	-	SPACE	-	-	-	-	-	-	-		
12	-	SPACE	-	-	-	-	-	-	-		
13	-	SPACE	-	-	-	-	-	-	-		
14	-	SPACE	-	-	-	-	-	-	-		
15	-	SPACE	-	-	-	-	-	-	-		
16	-	SPACE	-	-	-	-	-	-	-		
17	-	SPACE	-	-	-	-	-	-	-		
18	-	SPACE	-	-	-	-	-	-	-		
19	-	SPACE	-	-	-	-	-	-	-		
20	-	SPACE	-	-	-	-	-	-	-		
21	-	SPACE	-	-	-	-	-	-	-		
22	-	SPACE	-	-	-	-	-	-	-		
23	-	SPACE	-	-	-	-	-	-	-		
24	-	SPACE	-	-	-	-	-	-	-		
TOTAL CONNECTED LOAD (VA)=2250				TOTAL CONNECTED LOAD (KW)=2250				GROUND BUS (G)			
SOLID NEUTRAL (V)				4#1000				3#1000			



- UTILITY NOTES:**
1. SCH. 80 PVC CONDUIT WHERE PIPE IS EXPOSED ABOVE GRADE. TRANSITION TO SCH. 40 PVC BELOW GRADE. ALL 90° ELBOWS TO BE LONG SWEEP TYPE.
 2. 1/2" Ø ØV. 3 Ø 800A SERVICE FROM UTIL. CO., FEEDER BY UTIL. CO TO FIRST JUNCTION BOX. FIELD LOCATE TRANSFORMER ON POLE AND COORDINATE WITH ELEC. COMPANY REGARDING NEW ELECTRICAL SERVICE CONNECTION.

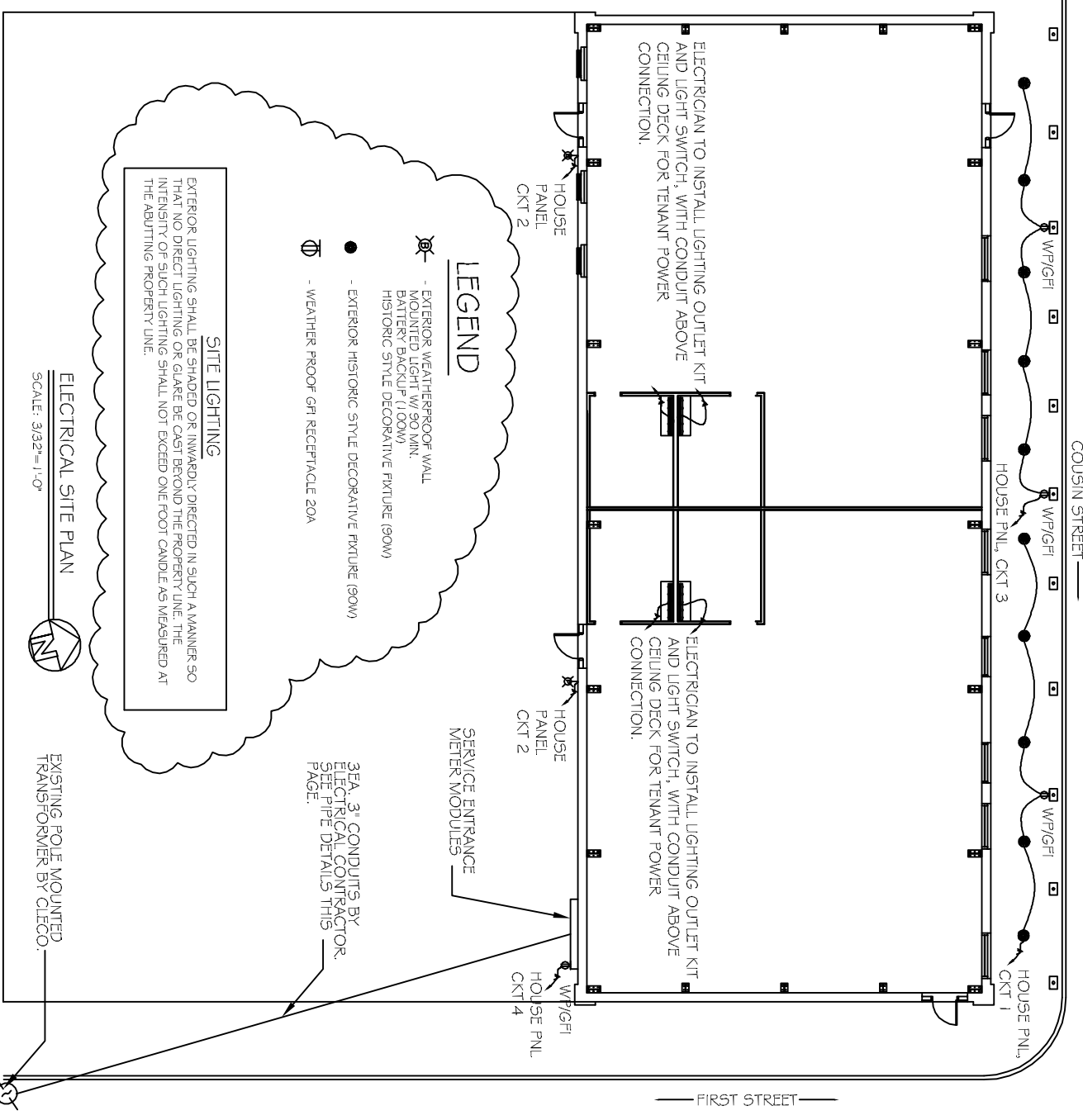
SUBSURFACE PIPE DETAIL

SCALE: N.T.S.



ELECTRICAL RISER DIAGRAM

SCALE: N.T.S.



ELECTRICAL NOTES

1. ALL WORK SHALL CONFORM TO THE LATEST EDITION OF THE NATIONAL ELECTRICAL CODE, THE GOVERNING ELECTRICAL CODE AND ALL OTHER INSPECTION DEPARTMENT'S HAVING JURISDICTION. OBTAIN CERTIFICATES OR APPROVAL WHERE REQUIRED.
2. ALL MATERIALS FURNISHED SHALL BE NEW AND SHALL BE U.L. LISTED.
3. THE DRAWINGS INDICATE SIZE AND GENERAL LOCATION OF WORK. SCALE DIMENSIONS SHALL NOT BE USED. THE EXACT LOCATION AND LOCATION OF ALL LIGHTING FIXTURES, RECEPTACLES AND TELEPHONE OUTLETS, ETC. SHALL BE DETERMINED BY ACTUAL CONDITIONS IN THE FIELD.
4. PRIOR TO BIDDING, CONTRACTOR SHALL VISIT THE JOB SITE AND FAMILIARIZE THEMSELVES WITH THE EXISTING WORK.
5. ELECTRICAL CONTRACTOR SHALL COORDINATE HIS WORK WITH OTHER TRADES AND WITH OTHER CONTRACTORS WHOSE WORK MAY AFFECT THIS INSTALLATION.
6. ELECTRICAL CONTRACTOR SHALL COORDINATE INCOMING ELECTRICAL SERVICE WITH UTILITY COMPANY AND INCLUDE IN HIS BID ALL CHARGES AND FEES INCURRED IN MODIFICATIONS, WHERE MORE THAN ONE SWITCH OCCURS IN THE SAME LOCATION. THEY SHALL BE INSTALLED IN A GANG-TYPE BOX UNDER ONE COVER PLATE.
7. ELECTRICAL CONTRACTOR SHALL COORDINATE THE TELEPHONE INSTALLATION WITH THE TELEPHONE COMPANY AND THE GENERAL CONTRACTOR.
8. ELECTRICAL CONTRACTOR, BEFORE INSTALLING ANY OF THE WORK, SHALL SEE THAT IT DOES NOT INTERFERE WITH CLEARANCES REQUIRED FOR FINISHED COLUMNS, HUNG CEILINGS, PLASTER, PARTITIONS, WALLS, ETC. AS SHOWN IN THE ARCHITECTURAL DRAWINGS AND DETAILS. IF ANY WORK IS INSTALLED AND IT LATER DEVELOPS THAT SUCH DETAILS OR DESIGN CANNOT BE FOLLOWED, THE CONTRACTOR, AT HIS OWN EXPENSE, SHALL MAKE SUCH CHANGES IN THE WORK AS DIRECTED BY THE ARCHITECT.
9. PERFORMANCE TEST REQUIRED BY THE OWNER OR THE ENGINEER IN CONNECTION WITH THE OPERATION OF THE ELECTRICAL SYSTEM IN THE BUILDING.
10. ALL TESTS SHALL BE MADE IN ACCORDANCE WITH THE LATEST STANDARD OF THE IEEE AND THE NATIONAL ELECTRICAL CODE.
11. MINIMUM CONDUCTOR SIZE SHALL BE #12, 600V INSULATION. MINIMUM SIZE CONDUIT SHALL BE 3/4\"/>

<p>OLDE TOWN SLIDELL FIRE DAMAGE REHABILITATION 227 & 295 COUSIN STREET SLIDELL, LA 70458</p>		<p>JOB No: 2146 DATE: 07-26-2012</p>							
<p>REVISIONS</p> <table border="1"> <thead> <tr> <th>#</th> <th>DESCRIPTION</th> <th>DATE</th> </tr> </thead> <tbody> <tr> <td>1</td> <td>ADDED NOTE</td> <td>9-23-13</td> </tr> </tbody> </table>		#	DESCRIPTION	DATE	1	ADDED NOTE	9-23-13	<p>DRAWN BY: BSN CHECKED BY: BSN</p>	
#	DESCRIPTION	DATE							
1	ADDED NOTE	9-23-13							

E-1

SHEET No: 6 OF 9

DAMMON
ENGINEERING, INC.
Architects & Engineers

dammonengineering.com
 dammoneng@bellsouth.net
 554 OLD SPANISH TRAIL
 SLIDELL, LA 70458
 PHONE: 985-649-5832
 FAX: 985-641-5950