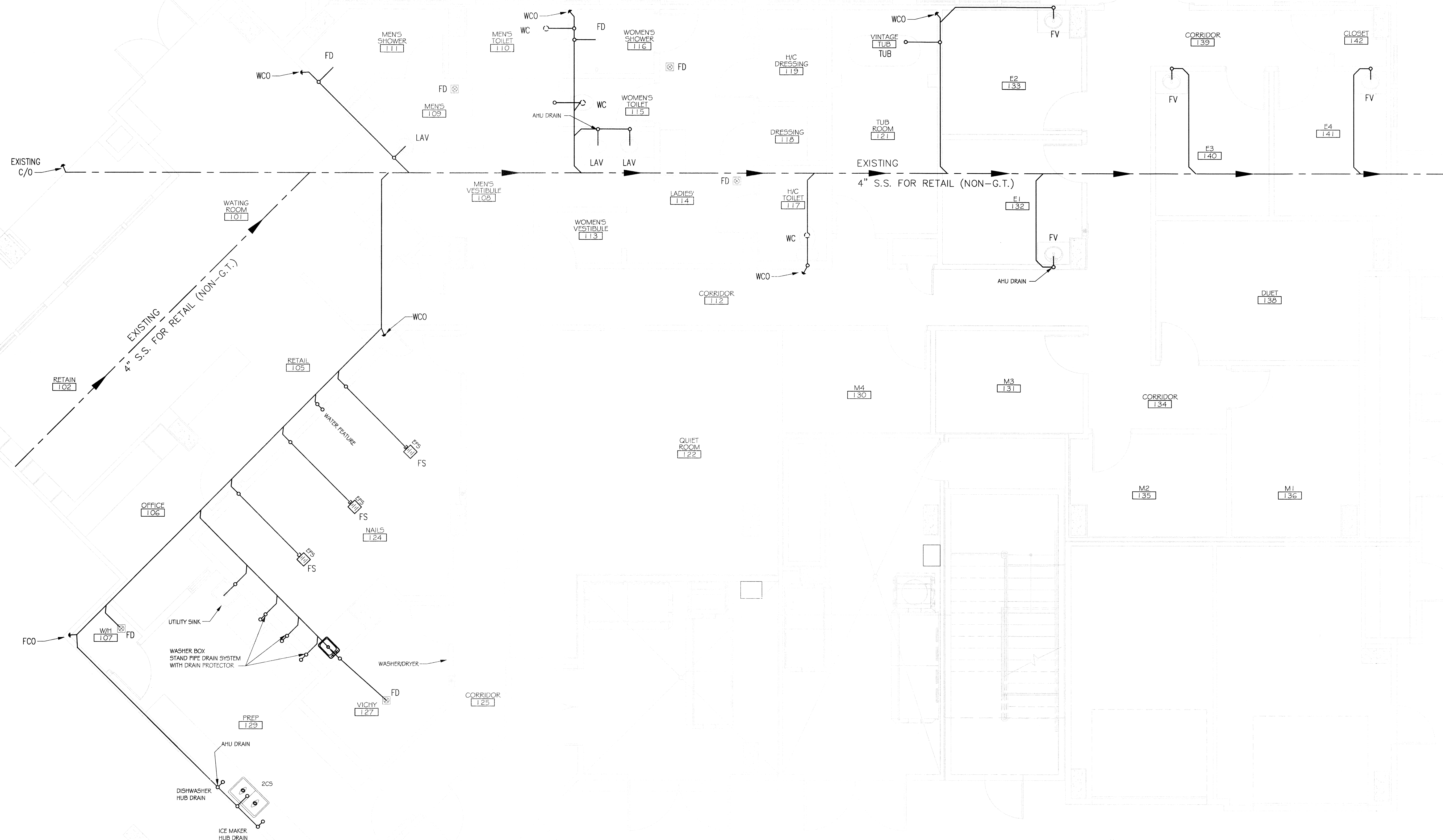


PLUMBING FIXTURE SCHEDULE

FIXTURE	DESCRIPTION
WATER CLOSET - "WC"	SEE WOODHOUSE SPECIFICATION; ALTO 137-160.
LAVATORY - "LAV"	SEE WOODHOUSE SPECIFICATION; KOHLER K2196.
FACIAL VANITY - "FV"	SEE WOODHOUSE SPECIFICATION; PORTLAND SINGLE VANITY.
VINATAGE TUB "TUB"	SEE WOODHOUSE SPECIFICATION; 67" VICTORIAN ACRYLIC SLIPPER TUB.
ECHO FOOT SPA "EFS"	SEE WOODHOUSE SPECIFICATION; CONTINUUM ECHO FOOT SPA. FOLLOW MANUFACTURER'S PLACEMENT OF FLOOR SINK.
BAR SINK	SEE WOODHOUSE SPECIFICATION; B155-2.
TWO COMP SINK "2CS"	SEE WOODHOUSE SPECIFICATION; MIDDLETON DOUBLE-BASIN SINK.
DISHWASHER	SEE WOODHOUSE SPECIFICATION; FRIGIDAIR 24" BUILT-IN DISHWASHER.
ICE MAKER	SEE WOODHOUSE SPECIFICATION; WHIRLPOOL GOLD 15" ICE MAKER.
UTILITY SINK - "US"	MUSTEE 24"x20" STRUCTURAL THERMOPLASTIC FLOOR-MOUNT UTILITY SINK.
WATER HEATER - "WH"	80 GALLON DUAL ELEMENT
FLOOR DRAIN - "FD"	4" ZURN # ZN-415 W/TRAP PRIMER.
FLOOR SINK - "FS"	EQUAL TO ZURN MODEL Z-1900-3; PROVIDE AIR GAP FOR INDIRECT CONNECTION.
BACK-FLOW PREVENTER	EQUAL TO WATTS NO. 909QT; CONFIRM MODEL # IS APPROVED BY LOCAL AUTHORITY PRIOR TO INSTALLATION. ASSE 1013 VERTICAL INSTALLATION APPROVED REDUCED PRESSURE ZONE BACK-FLOW PREVENTER. PROVIDE WITH STRAINER.

PLUMBING SITE NOTES:

- IT IS THE RESPONSIBILITY OF THIS CONTRACTOR TO FIELD VERIFY ALL SITE CONDITIONS PRIOR TO STARTING ANY PHASE OF CONSTRUCTION. ANY CHANGES OR COST NOT SHOWN ON THESE DRAWINGS SHALL BE BROUGHT TO THE ATTENTION OF THE ARCHITECT, ENGINEER.
- ALL EXISTING UTILITIES SHOWN ON THIS PLAN ARE ASSUMED TO BE CORRECT. IT IS THE RESPONSIBILITY OF THIS CONTRACTOR TO PROPERLY VERIFY ALL UNDERGROUND UTILITIES.
- KEEP ALL CUTTING AND PATCHING TO A MINIMUM.
- IT IS RECOMMENDED THAT THE SUBCONTRACTOR ARRANGE A PRE-JOB CONFERENCE WITH THE CONSTRUCTION SUPERVISOR FOR REVIEW & CLARIFICATION PRIOR TO STARTING ANY WORK.



DAMMON ENGINEERING, INC.
Architects & Engineers

CHIEF ENGINEER: ERVANNETT DAMMON, P.E.
CHIEF ARCHITECT: KEVIN KINCHEN

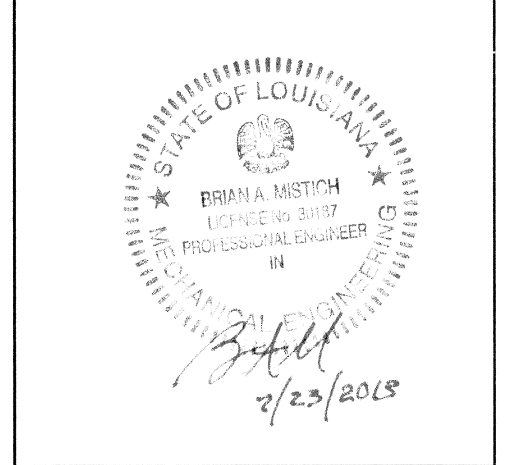
554 OLD SPANISH TRAIL
SUDELL, LA 70456

dammoneng.com
dammoneng@att.net
PHONE: 905-649-5932
FAX: 905-641-5950

WOODHOUSE SPA
THE HIGH GROVES APARTMENTS
BATON ROUGE, LA

JOB No: 2163 DATE: 5/14/2013 CHECKED BY: KJK
DRAWN BY: JCT

#	DESCRIPTION	DATE
1	REVISION #1	5/23/2013
2	REVISION #2	7-22-13



SANITARY SEWER PLAN

SHEET No: 12 OF 15

P-1

THIS PLAN IS DRAWN DIAGRAMMATICALLY
FIELD VERIFY PRIOR TO CONSTRUCTION

SANITARY SEWER PLAN
SCALE: 1/4" = 1'-0"