

**MEP ENGINEERS**  
 15403 GLENCHASE  
 HOUSTON, TEXAS 77095  
 PHONE: 281-556-9438  
 FAX: 281-556-9438  
 MEPP@HGC.COM  
 HGC.COM

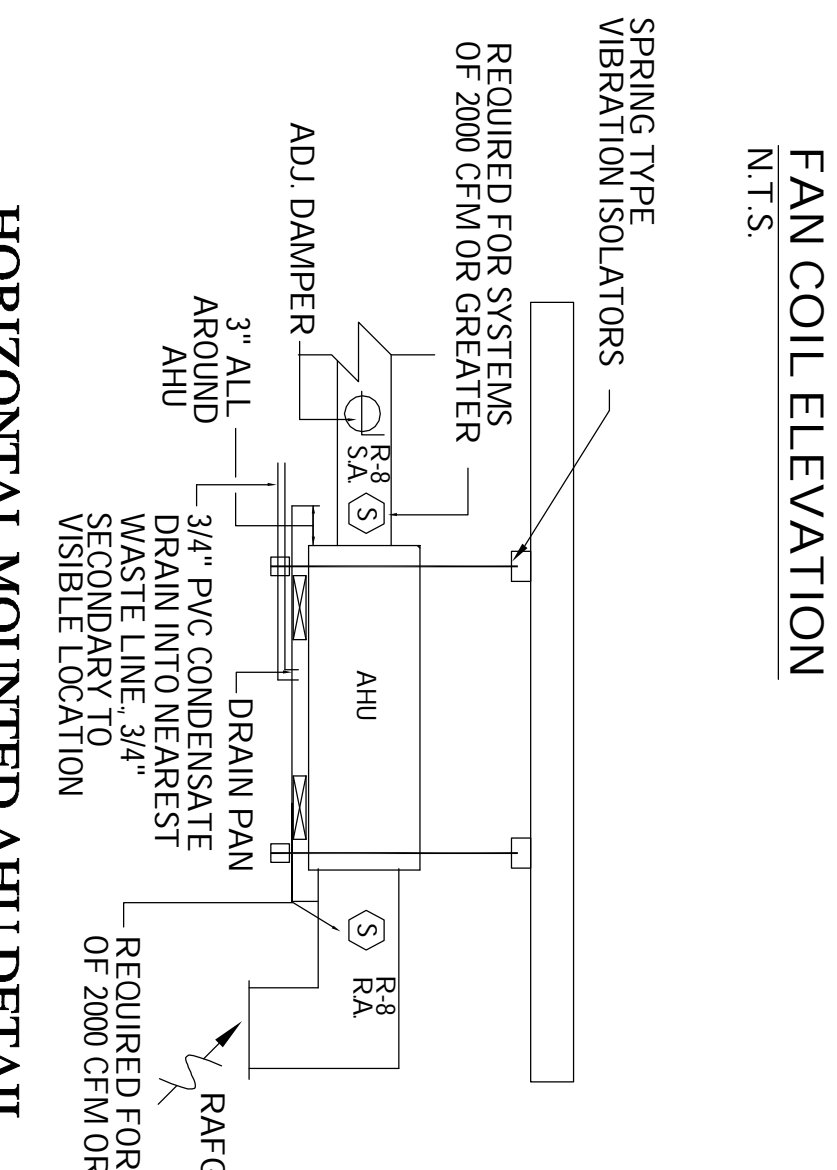
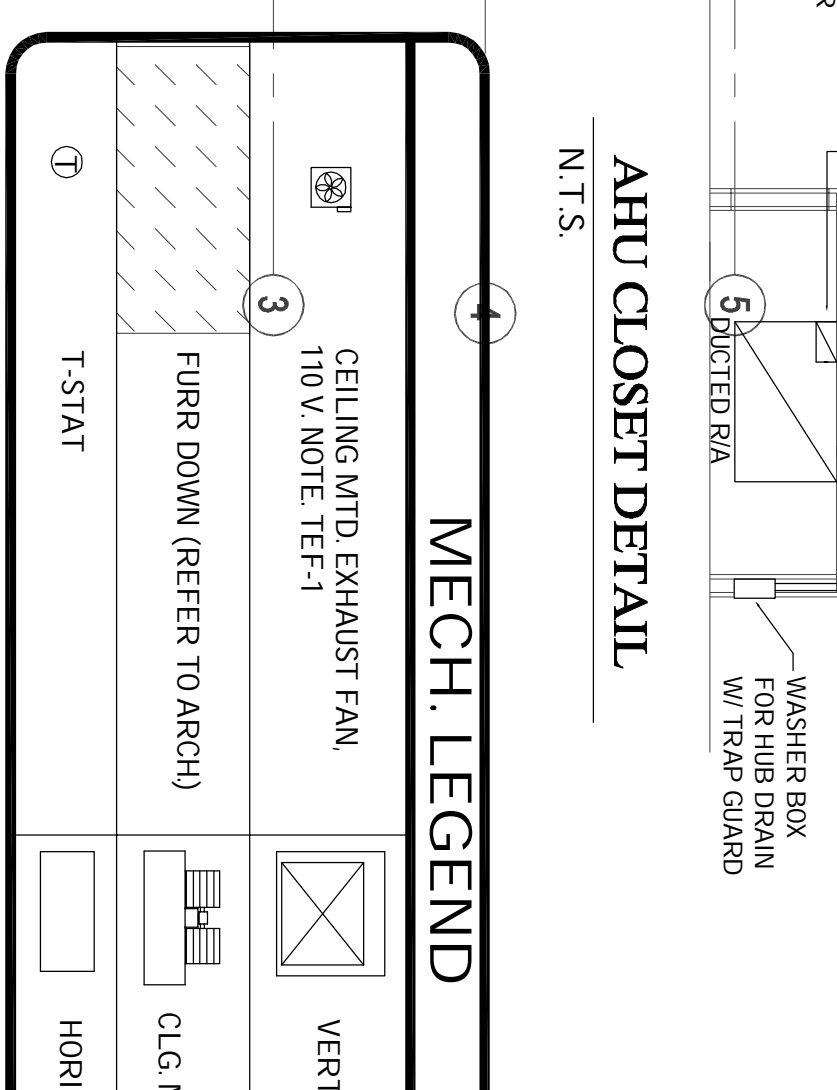
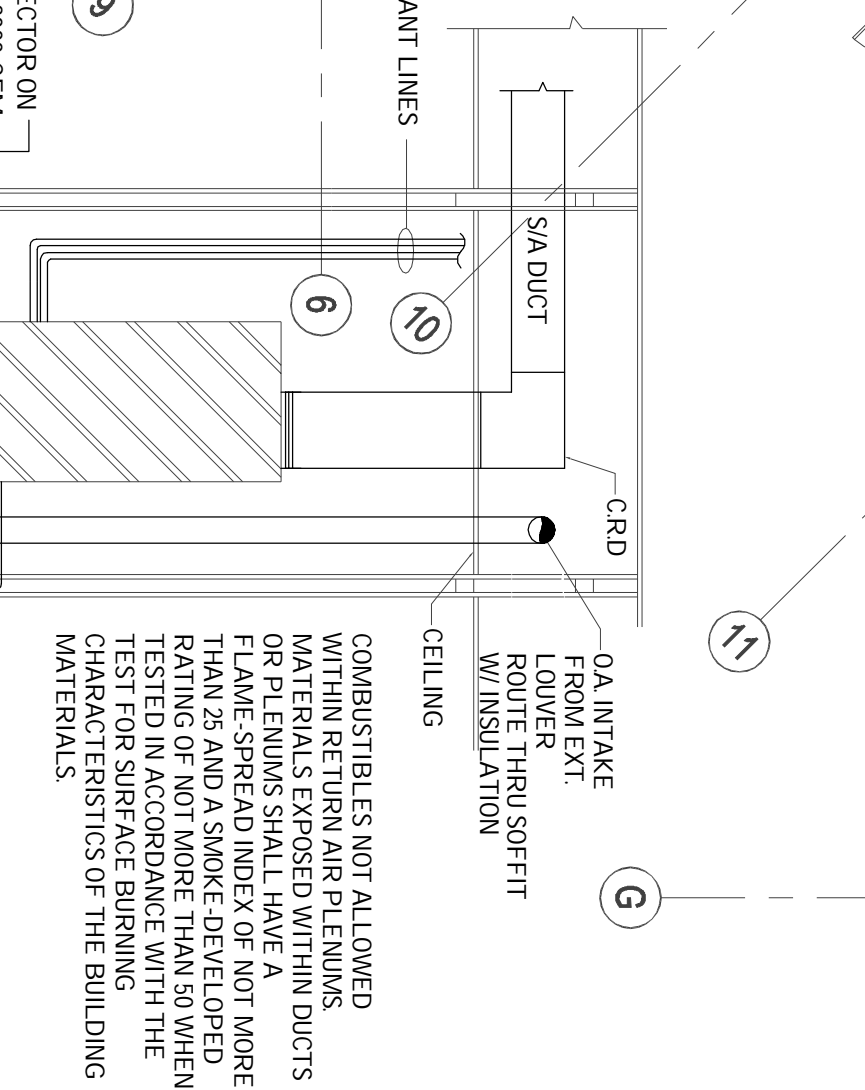
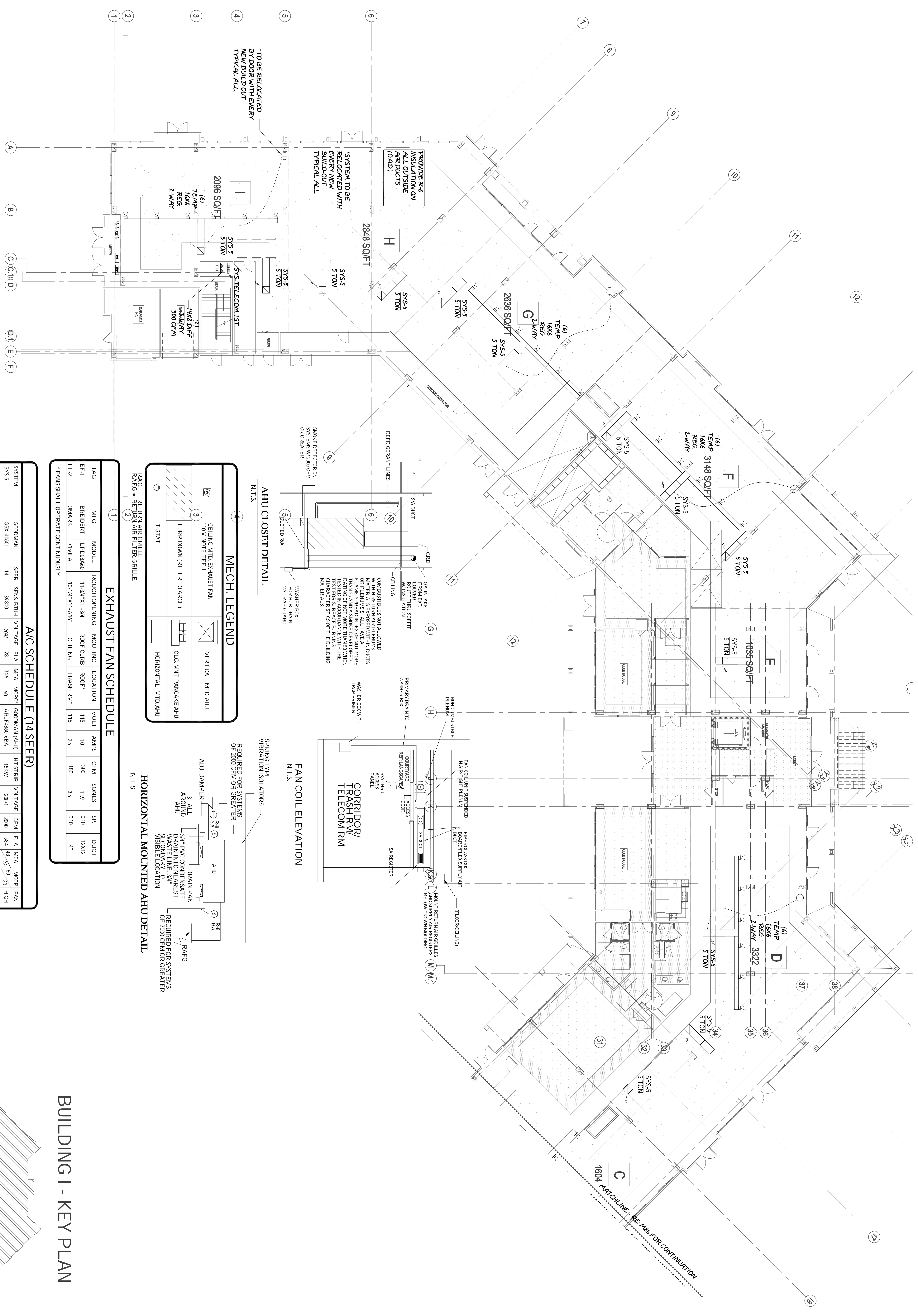
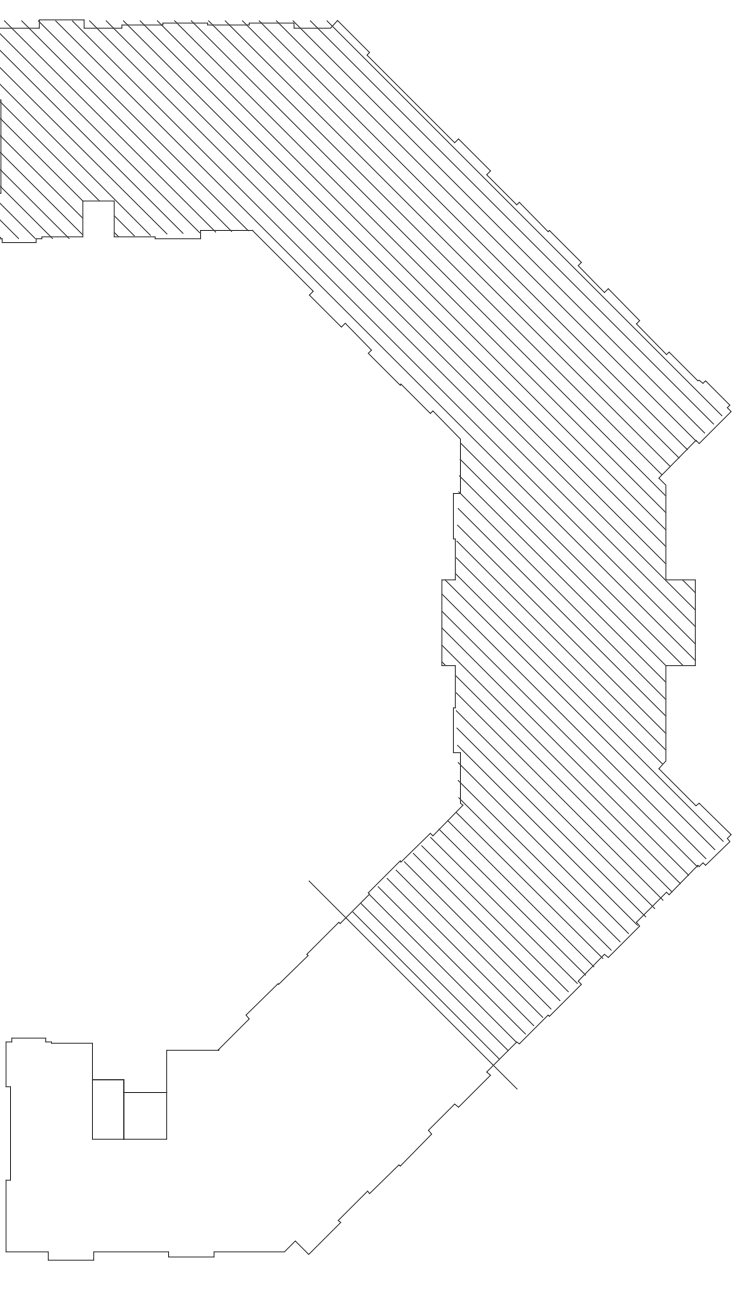
BY:	DATE	REVISION

**THE HIGH GROVE APARTMENTS**  
 BATON ROUGE, LOUISIANA  
 High Grove Baton Rouge, LLC.



**M-8a**  
 100% CD SET  
 PERMIT ISSUE  
 CONSTRUCTION ISSUE  
 DATE: 02/11/11  
 DRAWN BY: JV  
 CHECKED BY: JV  
 JOB: 894-10

**BUILDING I - KEY PLAN**



**EXHAUST FAN SCHEDULE**

TAG	MFG	MODEL	ROUGH OPENING	MOUNTING	LOCATION	VOLT	AMPS	CFM	SONES	SP.	DUCT
EF-1	BREDFERT	LPO88A40	11-3/4" X11-3/4"	ROOF CURB	ROOF	115	10	300	119	0.10	12X12
EF-2	QMARK	7159LA	10-1/4" X11-3/8"	CEILING	TRASH RM	115	25	150	35	0.10	4"

\* FANS SHALL OPERATE CONTINUOUSLY

**AC SCHEDULE (14 SEER)**

SYSTEM	GOODMAN	SEER	SEER BTUH	VOLTAGE	FLA	MCA	MOPC	GOODMAN (AHU)	HT STRIP	VOLTAGE	CFM	FLA	MCA	MOPC	FAN
SYS-5	GSN14001	14	39820	208V	28	346	40	ARUP-86016A	15KW	208V	2000	584	46	23	50
SYS-5	GSN14001	14	21000	208V	139	171	30	ARUP-203016A	8 KW	208V	1000	278	35	40	LOW
SYSTEM	CARRIER	SEER	SEER BTUH <th>VOLTAGE</th> <th>FLA</th> <th>MCA</th> <th>MOPC</th> <th>FIRST COIL (AHU)</th> <th>HT STRIP</th> <th>VOLTAGE</th> <th>CFM</th> <th>FLA</th> <th>MCA</th> <th>MOPC</th> <th>FAN</th>	VOLTAGE	FLA	MCA	MOPC	FIRST COIL (AHU)	HT STRIP	VOLTAGE	CFM	FLA	MCA	MOPC	FAN
SYS-1 TELECOM	24AB818	14	13430	208V	95	117	15	19HX0	NONE	208V	600	1	2	15	LOW
SYS-CORR	24AB818	14	13430	208V	95	117	15	19HX5	5 KW	208V	600	218	24	25	LOW

\* MAJOR TYPE CIRCUIT BREAKER PROVIDE FAN ON SWITCH FOR ALL AHUS SYSTEM REFRIGERANT IS R-410A THERMAL EXPANSION VALVE

**BUILDING I - GROUND LEVEL FLOOR PLAN (SOUTH)**



**1**

SCALE: 3/32" = 1'-0"