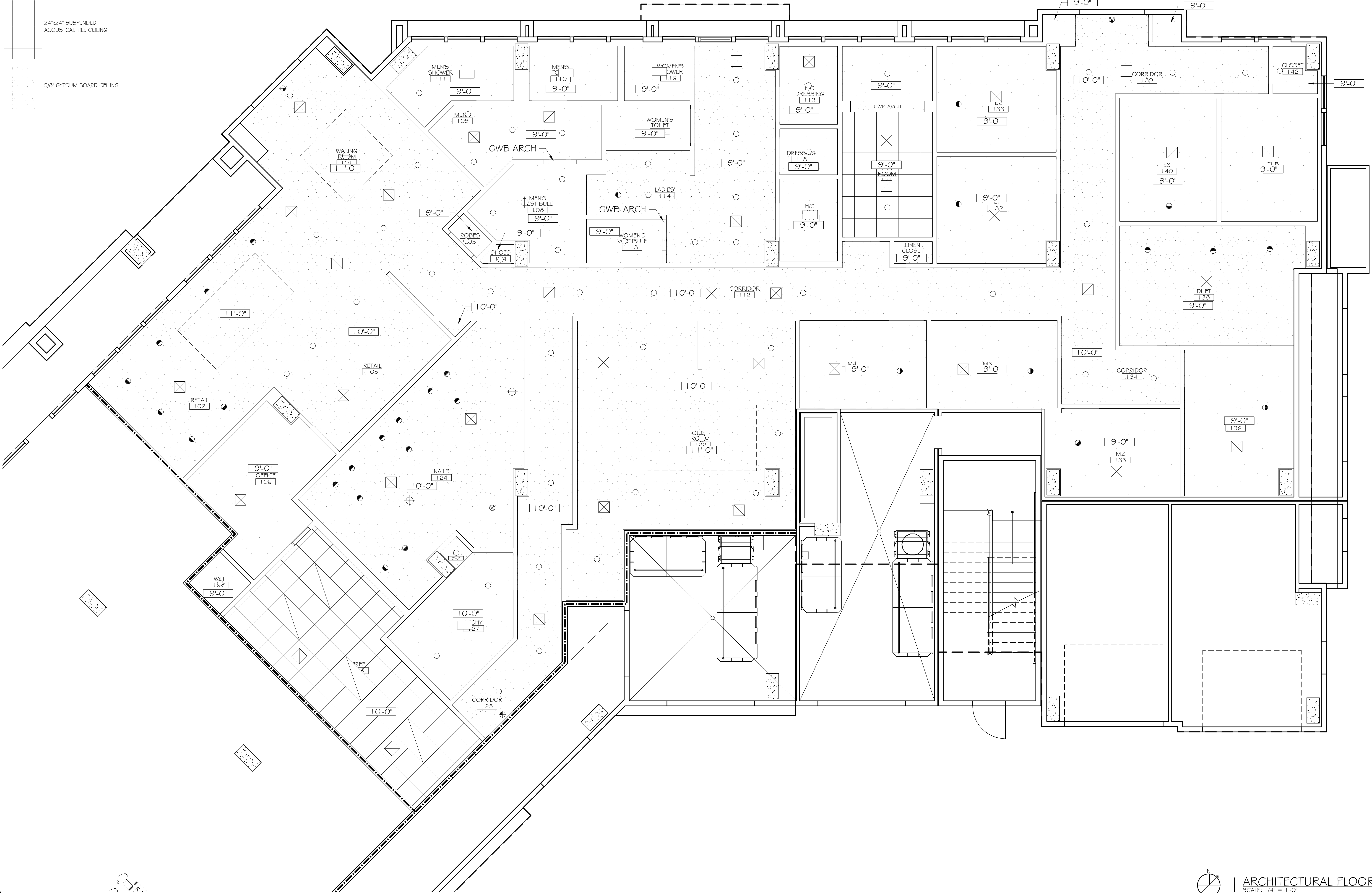


LEGEND

- RECESSED CAN LIGHT
- DIRECTIONAL RECESSED CAN LIGHT
- ⊗ PENDANT LIGHT
- ⊕ CHANDELIER
- FANLIGHT
- ⊗ EXIT LIGHT

24"x24" SUSPENDED ACOUSTICAL TILE CEILING

5/8" GYPSUM BOARD CEILING



DAMMON
ENGINEERING, INC.
Architects & Engineers

dammonengr.com
dammonengr@att.net
PHONE: 985-649-5332
FAX: 985-641-5950

CHIEF ENGINEER: BRADY DANNON, P.E.
CHIEF ARCHITECT: KEVIN KIRCHEN
554 OLD SPANISH TRAIL
SUDDLETT, LA 70458

WOODHOUSE SPA
THE HIGH GROVE APARTMENTS
BATON ROUGE, LA

JOB No: 2163 DATE: 2/4/2013
DRAWN BY: KJK CHECKED BY: KJK

#	DESCRIPTION	DATE

REFLECTED CEILING PLAN

SHEET No: 4 OF 15

A-2