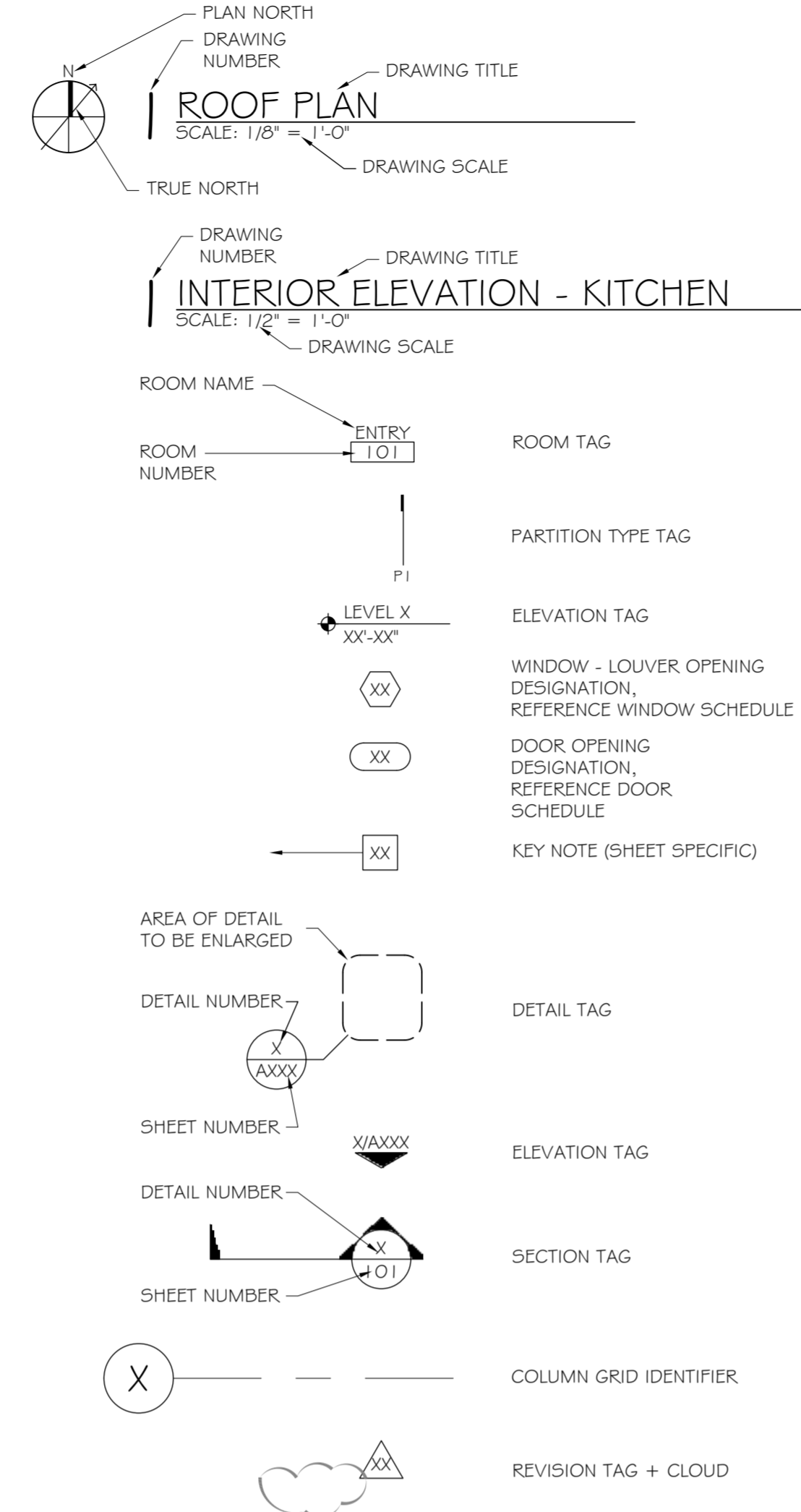


ABBREVIATIONS

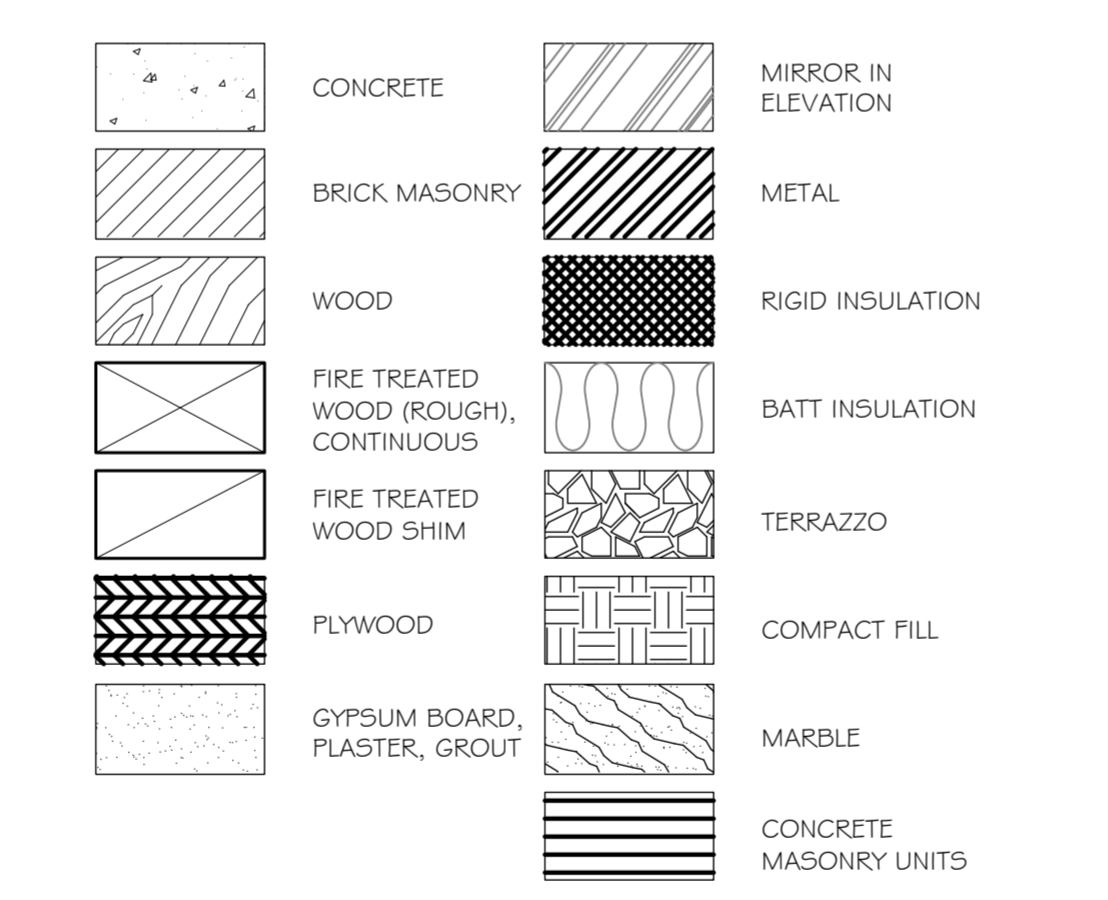
SYMBOLS USED AS ABBREVIATIONS:

∠	ANGLE	EXMP	EXPANDED METAL PLATE	MECH	MECHANIC(AL)	STSM	STANDING SEAM
CL	CENTERLINE	EXP	EXPOSED	MED	MEDIUM	SUS	SUSPENDED
CH	CHANNEL	EXST	EXISTING	MET	METAL	SV	SHEET VINYL
PENNY	PENNY	EXT	EXTERIOR	MFR	MANUFACTURE(ER)	SYM	SYMMETRY(ICAL)
⊥	PERPENDICULAR	FA	FIRE ALARM	MH	MANHOLE	SYN	SYNTHETIC
PLATE	PLATE	FAS	FASTEN	MICRO	MICROWAVE	SYS	SYSTEM
∅	ROUND	FB	FACE BRICK	MIN	MINIMUM	T	TREAD
		FBD	FIBERBOARD	MIR	MIRROR	TB	TOWEL BAR
		FBO	FURNISHED BY OTHERS	MISC	MISCELLANEOUS	TEL	TELEPHONE
		FD	FLOOR DRAIN	MMB	MEMBRANE	THK	THICKNESS
		FE	FIRE EXTINGUISHER	MOV	MOVABLE	THR	THRESHOLD
		FEC	FIRE EXTINGUISHER AND CABINET	MOUNT	MOUNT(ED)(ING)	TKBD	TACKBOARD
		FF	FACTORY FINISH	MULL	MULLION	TOL	TOLERANCE
		FFL	FINISHED FLOOR LINE	MW	MILLWORK	TOS	TOP OF STEEL
		FHC	FIRE HOSE CABINET	N	NORTH	TPD	TOILET PAPER DISPENSER
		FIN	FINISH(ED)	NAT	NATURAL	TRI	TRIPLE
		FJT	FLUSH JOINT	NIC	NOT IN CONTRACT	TSL	TOP OF SLAB
		FLG	FLASHING	NL	NAILABLE	TV	TELEVISION
		FLR	FLOOR	NMT	NONMETALLIC	TW	TOP OF WALL
		FLUOR	FLUORESCENT	NOM	NOMINAL	TYP	TYPICAL
		FLX	FLEXIBLE	NR	NOISE REDUCTION	UC	UNDERCOUNTER
		FND	FOUNDATION	NRC	NOISE REDUCTION COEFFICIENT	UNF	UNFINISHED
		FOC	FACE OF CONCRETE	NTS	NOT TO SCALE	UN	UNLESS OTHERWISE NOTED
		FOF	FACE OF FINISH	OA	OVERALL	UR	URNAL
		FOM	FACE OF MASONRY	OC	ON CENTER(S)	UT	UNDERCUT
		FO5	FACE OF STUDS	OD	OUTSIDE DIAMETER	VB	VAPOR BARRIER
		FPL	FLOOR PLATE	OF	OWNER FURNISHED, CONTRACTOR INSTALLED	VCJ	VERTICAL CONTROL JOINT
		FR	FRAMED/FRAMING	OFI	OWNER FURN. AND INSTALLED	VCT	VINYL COMPOSITION TILE
		FRC	FIRE-RESISTANT COATING	OH	OVERHEAD	VERT	VERTICAL
		FRG	FORGED	OJ	OPEN-WEB JOIST	VF	VINYL FABRIC
		FRT	FIRE-RETARDANT	OPG	OPENING	VIF	VERIFY IN FIELD
		FTG	FOOTING	OPH	OPPOSITE HAND	VIN	VINYL
		FUR	FURRED	OPP	OPPOSITE	VJ	V-JOINT(ED)
		GALV	GALVANIZED	PB	PANIC BAR	VNR	VENER
		GC	GENERAL CONTRACTOR	PERF	PERFORATE(D)	VOJ	VAPOR ON JOB
		GD	GRADE	PERI	PERIMETER	VR	VAPOR BARRIER
		GF	GROUND FACE	PF	PREFABRICATE(D)	VRM	VERMICULITE
		GI	GALVANIZED IRON	PFN	PREFINISHED	VWB	VINYL WALL BASE
		GK	GASKET	PL	PLATE	VT	VINYL TILE
		GKT	GLASS/GLAZING	P/L	PROPERTY LINE	W	WEST
		GL	GALVANIZED PIPE	PLAM	PLASTIC LAMINATE	W	WITH
		GPL	GYPSON LATH	PLAS	PLASTER	WB	WOOD BASE
		GPPL	GYPSON PLASTER	PNL	PANEL	WC	WATER CLOSET
		GSS	GALVANIZED STEEL SHEET	PRF	PREFORMED	WD	WOOD
		GT	GROUT	PRL	PROPERTY LINE	WH	WALL HUNG
		GVL	GRAVEL	PSF	POUNDS PER SQUARE FOOT	WM	WIRE MESH
		GWB	GYPSON WALL BOARD	PSI	POUNDS PER SQUARE INCH	WP	WATERPROOFING
		HB	HOSE BIB	PTD	PAINT(ED)	WPT	WORKING POINT
		HBD	HARDBOARD	PT	POINT	WS	WATERSTOP
		HIC	HANDICAPPED	P DISP	PAPER TOWEL DISPENSER	WSCT	WAINSCOT
		HC	HOLLOW CORE	PTN	PARTITION	WWF	WELDED WIRE FABRIC
		HCH	HORIZONTAL CONTROL JOINT	PTR	PAPER TOWEL RECEPTACLE		
		HDR	HEADER	PV	PAVE(D)(ING)		
		HDW	HARDWARE	PVC	POLYVINYL CHLORIDE		
		HJT	HEAD JOINT	PVMT	PAVEMENT		
		HM	HOLLOW METAL	QT	QUARRY TILE		
		HOR	HORIZONTAL	R	RISER		
		HPT	HIGH POINT	RA	RETURN AIR		
		HR	HANDRAIL	RAD	RADIUS		
		HT	HEIGHT	RB	RUBBER BASE		
		HTG	HEATING	RBT	RABBET		
		HVAC	HEATING/VENTILATING/AIR CONDITIONING	RD	ROOF DRAIN		
		HWD	HARDWOOD	REF	REFERENCE		
		ID	INSIDE DIAMETER	REFR	REFRIGERATOR		
		INCL	INCLUDE(D)(ING)	REG	REGISTER		
		INSP	INSULATING FILL	REINP	REINFORCE(D)(ING)		
		INSUL	INSULATE(D)(INSULATION)	RES	RESILIENT		
		INT	INTERIOR	RET	RETURN		
		INTM	INTERMEDIATE	REV	REVISION(S)(REVISED)		
		INV	INVERT	RFL	REFLECT(ED)(IVE)(OR)		
		IPS	IRON PIPE SIZE	RH	RIGHT HAND		
		J	JOIST	RL	RAIL(ING)		
		JF	JOINT FILLER	RM	ROOM		
		JT	JOINT	RO	ROUGH OPENING		
		L	LENGTH	ROW	RIGHT OF WAY		
		LAB	LABORATORY	RT	RUBBER TILE		
		LAD	LADDER	RWC	RAINWATER CONDUCTOR		
		LAM	LAMINATE(D)	S	SOUTH		
		LAV	LAVATORY	SC	SOLID CORE		
		LB	LAG BOLT	SCH	SCHEDULE		
		LBL	LABEL	SD	STORM DRAIN		
		LC	LIGHT CONTROL	S DISP	SOAP DISPENSER		
		LH	LEFT HAND	SEC	SECTION		
		LL	LIVE LOAD	SG	SHEET GLASS		
		LP	LIGHTPROOF	SH	SHELF/SHELVING		
		LPT	LOW POINT	SHO	SHORE(D)(ING)		
		LST	LIMESTONE	SHT	SHEET		
		LT	LIGHT	SHTH	SHEATHING		
		LTL	LINTEL	SIM	SIMILAR		
		LVR	LOUVER	SL	SLEEVE		
		LW	LIGHTWEIGHT	SNT	SEALANT		
		LWC	LIGHTWEIGHT CONCRETE	SP	SOUNDPROOF		
		MAS	MASONRY	SPC	SPEC		
		MATL	MATERIAL(S)	SPC	SPECIFICATION(S)		
		MAX	MAXIMUM	SPKR	SPEAKER		
		MB	MACHINE BOLT	SPL	SPECIAL		
		MBR	MEMBER	SQ	SQUARE		
		MDF	MEDIUM DENSITY FIBERBOARD	SSK	SERVICE SINK		
		MDO	MEDIUM DENSITY OVERLAY	SST	STAINLESS STEEL		
				ST	STEEL		
				STD	STANDARD		
				STG	SEATING		
				STO	STORAGE		
				STR	STRUCTURAL		

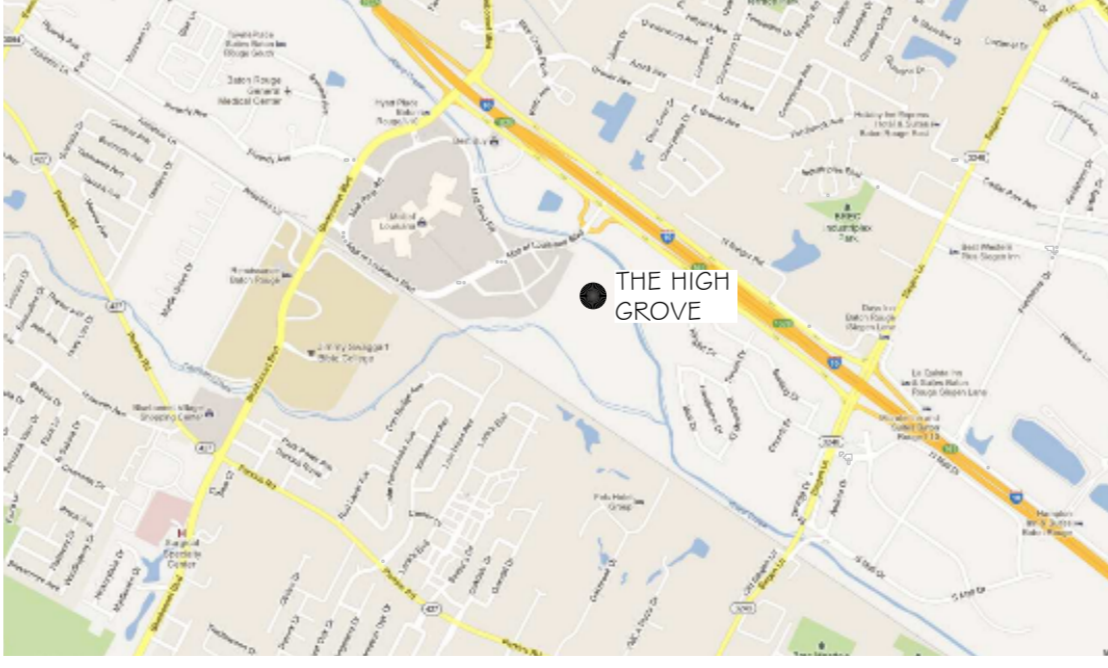
SYMBOLS



MATL. DESIGNATIONS



VICINITY MAP



PROJECT STATISTICS

SQUARE FOOTAGE	
MERCHANTILE OCCUPANCY	573
BUSINESS OCCUPANCY	4,238
TOTAL ENCLOSED SPACE	4,811

PROJECT LOCATION:
THE HIGH GROVE APARTMENTS
SUITE A
BATON ROUGE, LA

OWNER:
ERIN WARNER
WOODHOUSE SPA
796 INTERSTATE 10 SERVICE ROAD #230
SLIDELL, LA 70461

GENERAL NOTES

- ALL MATERIALS AND WORK, INCIDENTAL TO THE CONSTRUCTION OF THIS PROJECT, SHALL CONFORM TO ALL GOVERNING CODES, AND REGULATIONS OF AGENCIES IN AUTHORITY.
- CONTRACTOR SHALL PROVIDE ALL PUBLIC PROTECTIONS NECESSARY AS REQUIRED BY LAW.
- THE DRAWINGS, SPECIFICATIONS AND ANY SUBSEQUENTLY ISSUED ADDENDA, AMENDMENTS OR SUCH CHANGE ORDERS APPROVED BY THE OWNER AND THE CONTRACTOR ARE PART OF THESE CONTRACT DOCUMENTS.
- DO NOT SCALE DRAWINGS. CONSULT WITH THE ARCHITECT REGARDING ANY ITEMS IN THE CONTRACT DOCUMENTS THAT REQUIRE CLARIFICATION.
- VERIFY LOCATION OF ALL EQUIPMENT WITH THE ARCHITECT, PRIOR TO INSTALLATION.
- TRASH SHALL BE REMOVED FROM THE SITE NOT LESS THAN TWICE MONTHLY.
- THE GENERAL CONTRACTOR SHALL VERIFY EXISTING CONDITIONS PRIOR TO COMMENCING WORK AND REPORT ANY AND ALL DISCREPANCIES TO THE ARCHITECT.
- CONTRACTOR VEHICLES AND EQUIPMENT NECESSARY FOR CONSTRUCTION MAY BE PARKED ON THE SITE. OTHER VEHICLES PARKED ON THE SITE REQUIRE THE OWNER'S PERMISSION.
- WORK INDICATED AS 'NOT IN CONTRACT', 'NIC', OR 'BY OTHERS', SHALL BE PERFORMED BY OWNERS SEPARATE CONTRACTORS. THE GENERAL CONTRACTOR SHALL COOPERATE TO THE FULLEST EXTENT WITH ALL OTHER CONTRACTORS AND ASSIST IN COORDINATING THE WORK BY SEPARATE CONTRACTORS WITH THE WORK OF THIS CONTRACT.
- NAMING A CERTAIN BRAND, MAKE OR MANUFACTURER IS TO DESIGNATE THE GENERAL STYLE, TYPE, CHARACTER AND QUALITY STANDARD OF THE PRODUCT DESIRED. SUBSTITUTION REQUESTS MUST BE SUBMITTED PRIOR TO BIDDING.
- ALL MATERIALS/EQUIPMENT SHALL BE INSTALLED PER MANUFACTURER'S RECOMMENDATIONS. WORK NOT CONSISTENT WITH MANUFACTURER'S RECOMMENDATIONS WILL BE REJECTED BY OWNER/ARCHITECT.

SHEET INDEX

SHEET NUMBER	SHEET TITLE
G-1	GENERAL INFORMATION SHEET
G-2	LIFE-SAFETY PLANS
A-1	ARCHITECTURAL FLOOR PLAN
A-2	REFLECTED CEILING PLAN
A-3	OPENINGS, PARTITIONS, INTERIOR ELEVATIONS
A-4	ROOF PLAN
M-1	MECHANICAL PLAN
M-2	MECHANICAL DETAILS
E-1	POWER PLAN
E-2	LIGHTING PLAN
E-3	NOTES & SCHEDULES
P-1	SANITARY SEWER PLAN
P-2	POTABLE WATER PLAN

DAMMON ENGINEERING, INC.
Architects & Engineers

4400 Old Spanish Trail
Slidell, LA 70455
Phone: 985-649-5432
Fax: 985-641-5950

PROJECT ENGINEER: DAMON DAMMON, P.E.
ARCHITECT: KEVIN KITCHEN
554 OLD SPANISH TRAIL
SLIDELL, LA 70455

WOODHOUSE SPA
THE HIGH GROVE APARTMENTS
BATON ROUGE, LA

JOB No: 2163 DATE: 4/30/2013 CHECKED BY: KJK
DRAWN BY: KJK

#	DESCRIPTION	DATE

GENERAL INFORMATION SHEET

SHEET No: 1 OF 15

G-1

BUILDING CODE INFORMATION

BUILDING CODE
 IBC (INTERNATIONAL BUILDING CODE) 2009

OCCUPANCY TYPE OF GROUP(S) (IBC 2009 CHAPTER 3):
 MERCHANTILE
 BUSINESS

CONSTRUCTION TYPE(S):
 V-A 4,811 S.F.

MAXIMUM AREA (S.F.):
 MERCHANTILE 573 S.F.
 BUSINESS 4,238 S.F.

REQUIRED SEPARATION OF OCCUPANCIES (TABLE 508.2.5):
 BM NR

MAXIMUM AREA OF EXTERIOR WALL OPENINGS:
 N/A

OCCUPANT LOAD CALCULATIONS BY OCCUPANCY:
 MERCHANTILE 60 S.F./OCCUPANT = 10
 BUSINESS 100 S.F./OCCUPANT = 43
 TOTAL = 53

EXIT REQUIREMENTS:
 FIRST FLOOR - 2 EXITS

MAXIMUM EXIT ACCESS TRAVEL DISTANCE (TABLE 1016.2):
 B - 300' M - 250'

MINIMUM CORRIDOR WIDTH (SECTION 1018.1 # SECTION 1005.1):
 44"

MAXIMUM DEAD END CORRIDOR (SECTION 1018.4):
 50'

MAXIMUM COMMON PATH OF TRAVEL (1014.3):
 B - 100' M - 75'

FIRE RESISTANCE RATING REQUIREMENTS FOR BLDG. ELEMENTS: (TBL 601)
 STRUCTURAL FRAME = 1 HRS.
 BEARING WALLS (INTERIOR AND EXTERIOR) = 1 HRS.
 NON-BEARING INTERIOR WALLS = 0 HRS.
 FLOOR CONSTRUCTION = 1 HRS.
 ROOF CONSTRUCTION = 1 HRS.

LIFE-SAFETY INFORMATION

LIFE SAFETY CODE:
 NFPA 101 LIFE SAFETY CODE 2009

OCCUPANCY:
 MERCHANTILE CHAPTER 26
 BUSINESS CHAPTER 38

REQUIRED SEPARATION:
 N/A

CLASSIFICATION OF HAZARD OF CONTENTS:
 ORDINARY

CONSTRUCTION TYPE(S) - (CHAPTER 8, TABLE A.8.2.1.2)
 V-A
 SPRINKLERED

AREA CALCULATIONS BY OCCUPANCY:
 FIRST FLOOR
 MERCHANTILE 574 S.F.
 BUSINESS 4,237 S.F.
 TOTAL 4,811 S.F.

OCCUPANT LOAD CALCULATIONS BY OCCUPANCY:
 MERCHANTILE 574 S.F. = 20
 BUSINESS 4,237 S.F. = 43
 TOTAL = 63

MEANS OF EGRESS:
 NUMBER OF EXITS - M-2 B-2
 MINIMUM EXIT SEPARATION DISTANCE FOR REMOTELY LOCATED EXITS
 1/3 DIAGONAL 37'-0"

STAIR WIDTH REQUIREMENTS: 36"

EXTINGUISHMENT REQUIREMENTS:
 SPRINKLERED (REQUIRED)

SUBDIVISION OF BUILDING SPACE:
 NONE

DETECTION/ALARM:
 NONE

EXIT REQUIREMENTS:
 2 EXITS

MAXIMUM EXIT ACCESS TRAVEL DISTANCE (TABLE A.7.6):
 M - 250' B - 300'

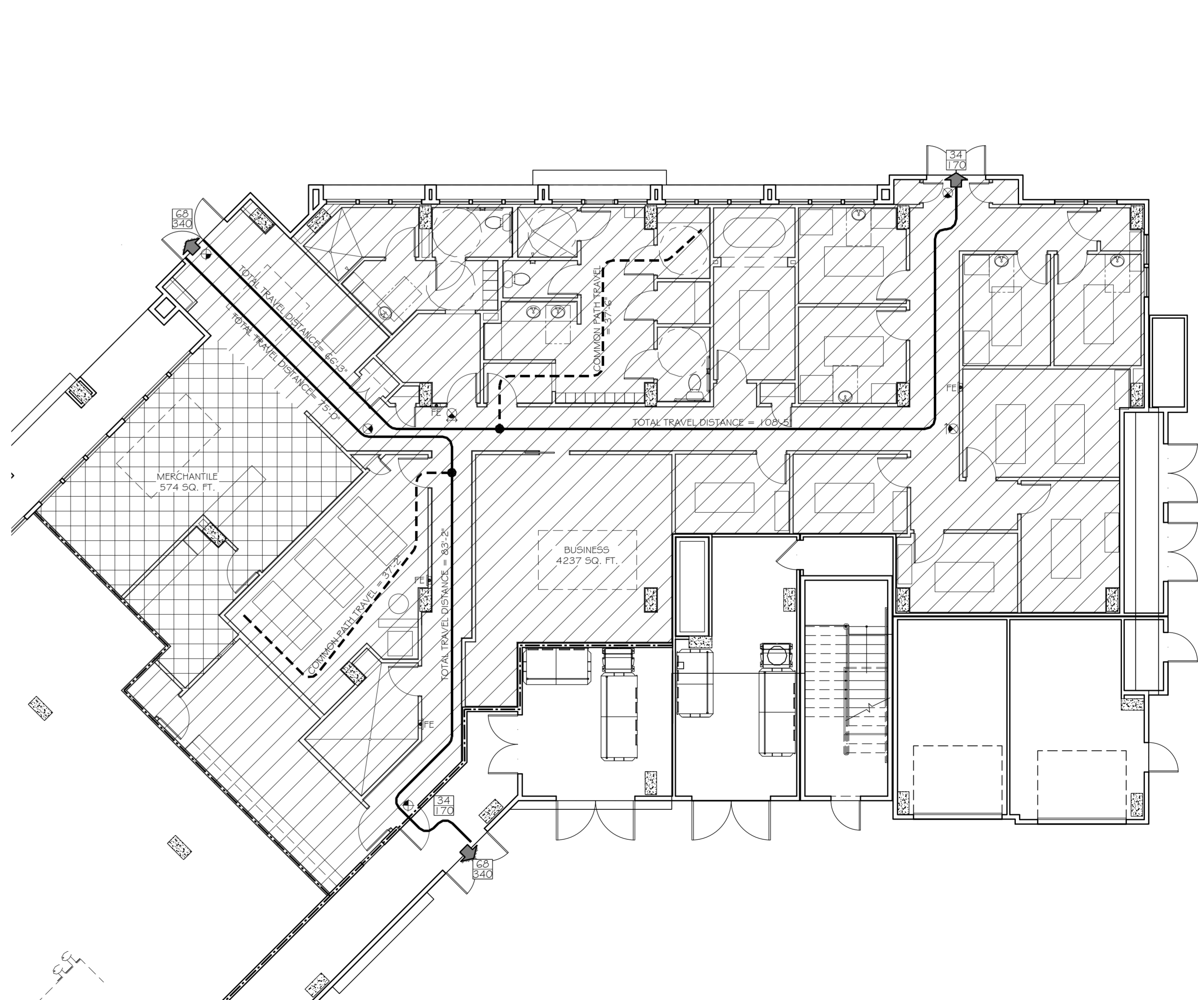
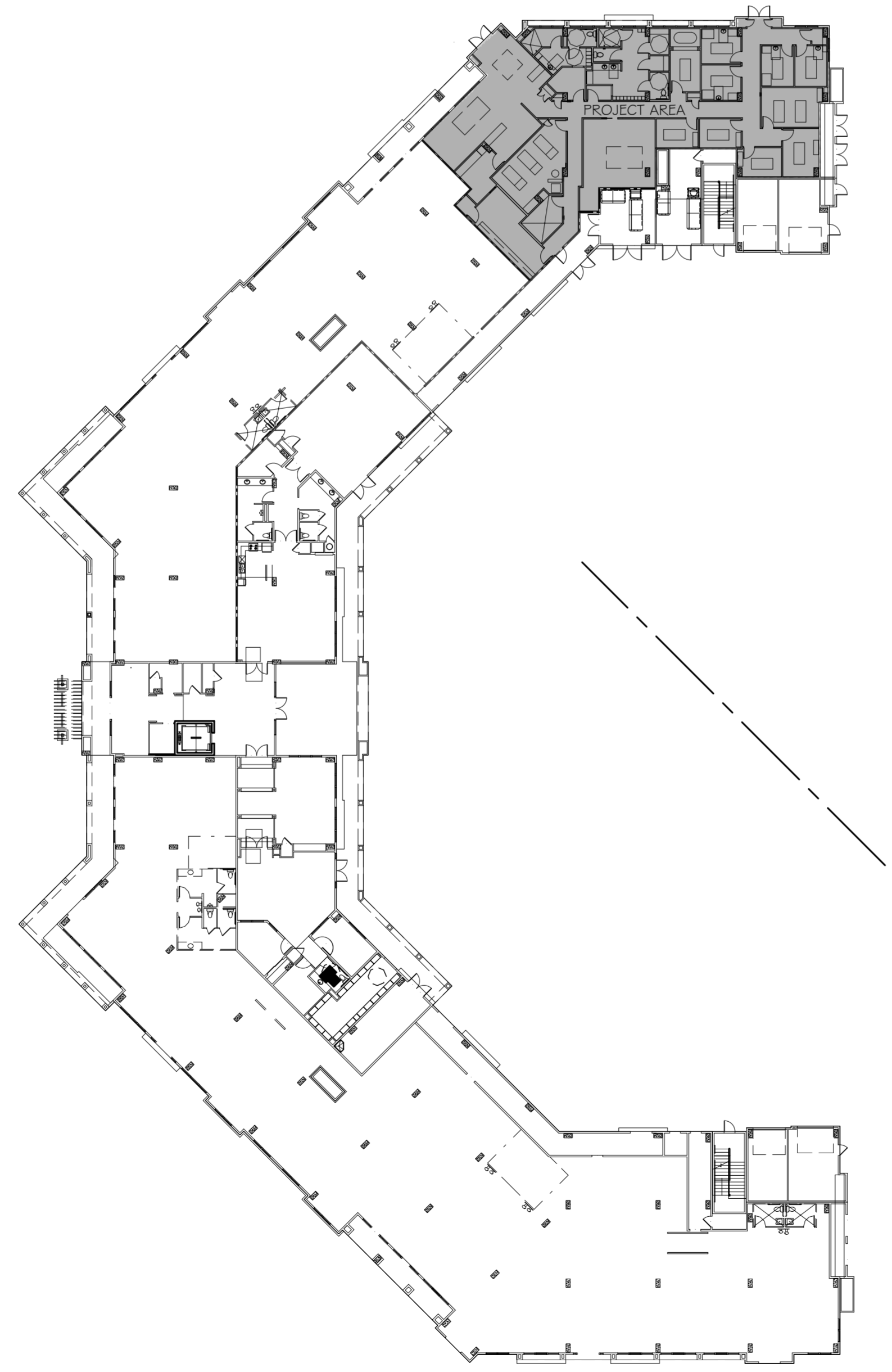
MINIMUM CORRIDOR WIDTH (SECTION 1018.1 # SECTION 1005.1):
 44"

MAXIMUM DEAD END CORRIDOR (TABLE A.7.6):
 50'

MAXIMUM COMMON PATH OF TRAVEL (TABLE A.7.6):
 M - 100' B - 100'

LEGEND

- OCCUPANCIES**
- BUSINESS
 - MERCHANTILE
- SYMBOLS**
- EXITS
 - DOOR FIRE RATING (MINUTES)
 - DOOR WIDTH/EGRESS CAPACITY
 - EXIT LIGHT
 - FIRE EXTINGUISHER CABINET
 - FIRE EXTINGUISHER W/ WALL MOUNTED BRACKET
 - ONE-HOUR RATED PARTITION
 - COMMON PATH OF TRAVEL/TRAVEL DISTANCE
 - TRAVEL DISTANCE
 - DECISION POINT



DAMMON ENGINEERING, INC.
Architects & Engineers

ADMINISTRATIVE: CON
 dammon@dammoneng.com
 dammoneng@bellsouth.net
 PHONE: 985-649-5432
 FAX: 985-641-5950

CHIEF ENGINEER: BRADYTT DAMMON, P.E.
 CHIEF ARCHITECT: KEVIN KIRCHEN
 554 OLD SPANISH TRAIL
 SUITE 100, BATON ROUGE, LA 70805

WOODHOUSE SPA
 THE HIGH GROVE APARTMENTS
 BATON ROUGE, LA

JOB No: 2163 DATE: 5-14-2013
 DRAWN BY: KJK CHECKED BY: KJK

#	DESCRIPTION	DATE

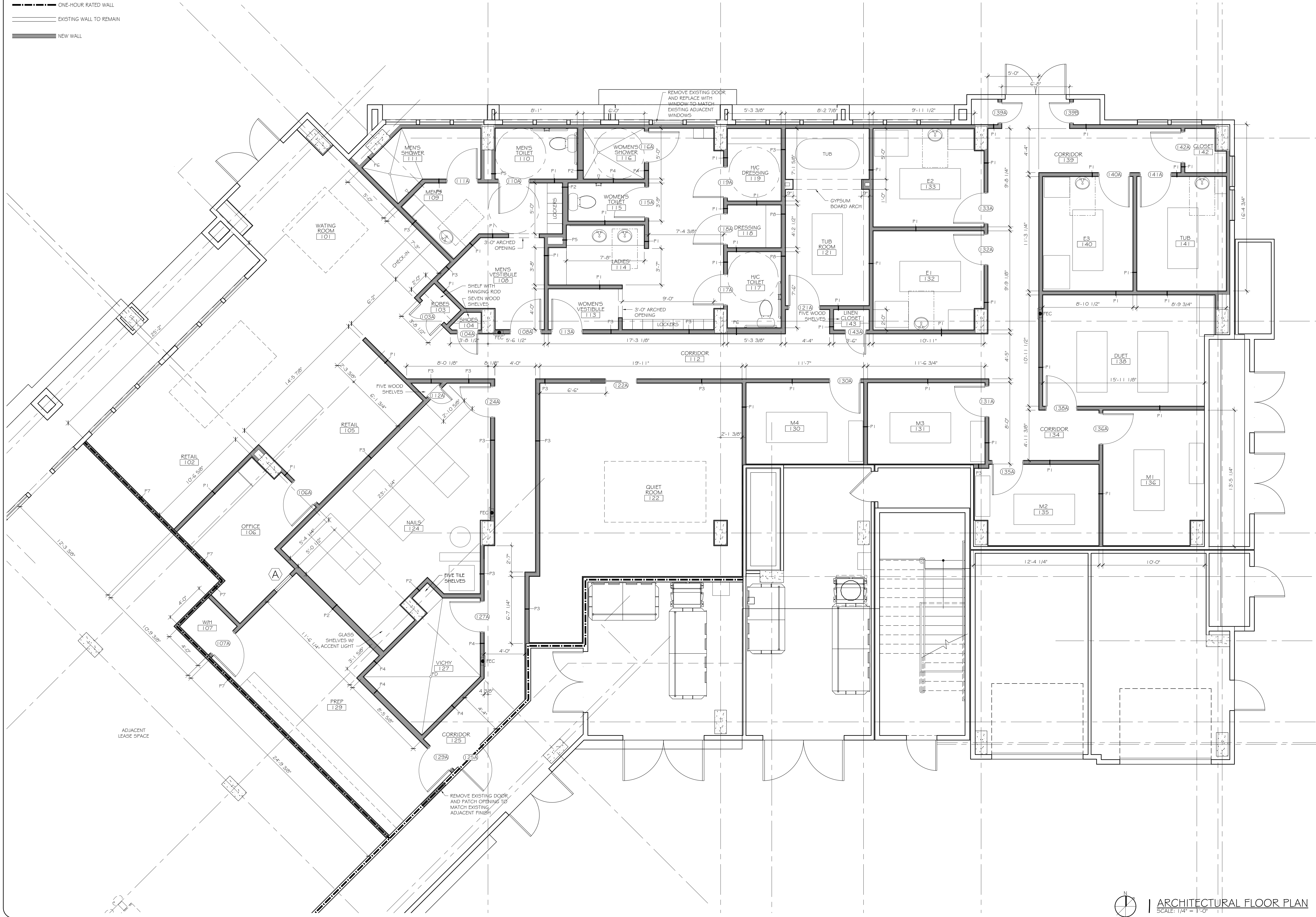
LIFE SAFETY PLANS
NOTES & TABULATIONS

SHEET No: 2 OF 15

G-2

LEGEND

- ONE-HOUR RATED WALL
- EXISTING WALL TO REMAIN
- NEW WALL



DAMMON
ENGINEERING, INC.
Architects & Engineers

ARCHITECT: KEVIN KIRCHEN
ENGINEER: BRAMM DANNON, P.E.
554 OLD SPANISH TRAIL
SUDDLE, LA 70458
PHONE: 985-649-5332
FAX: 985-641-5950

WOODHOUSE SPA
THE HIGH GROVE APARTMENTS
BATON ROUGE, LA

JOB No: 2163 DATE: 5-14-2013
DRAWN BY: KJK CHECKED BY: KJK

#	DESCRIPTION	REVISIONS	DATE

ARCH. FLOOR PLAN

SHEET No: 3 OF 15

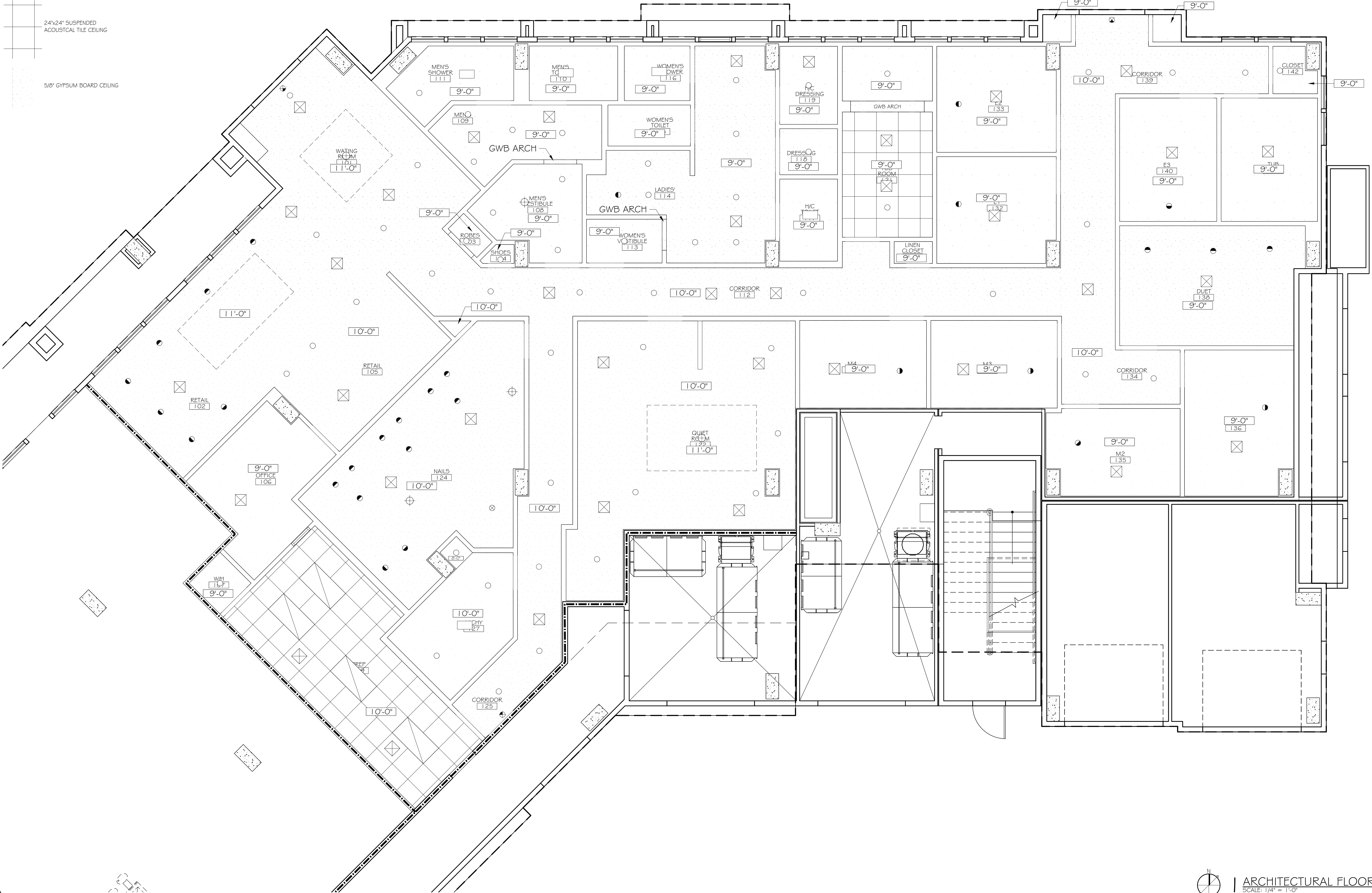
A-1

LEGEND

- RECESSED CAN LIGHT
- DIRECTIONAL RECESSED CAN LIGHT
- ⊗ PENDANT LIGHT
- ⊕ CHANDELIER
- FANLIGHT
- ⊗ EXIT LIGHT

24"x24" SUSPENDED ACOUSTICAL TILE CEILING

5/8" GYPSUM BOARD CEILING



DAMMON
ENGINEERING, INC.
Architects & Engineers

dammonengineering.com
dammon@dammon.net
PHONE: 985-649-5332
FAX: 985-641-5950

CHIEF ENGINEER: BRAMMETT DAMMON, P.E.
CHIEF ARCHITECT: KEVIN KIRCHEN
554 OLD SPANISH TRAIL
SUDDLETT, LA 70458

WOODHOUSE SPA
THE HIGH GROVE APARTMENTS
BATON ROUGE, LA

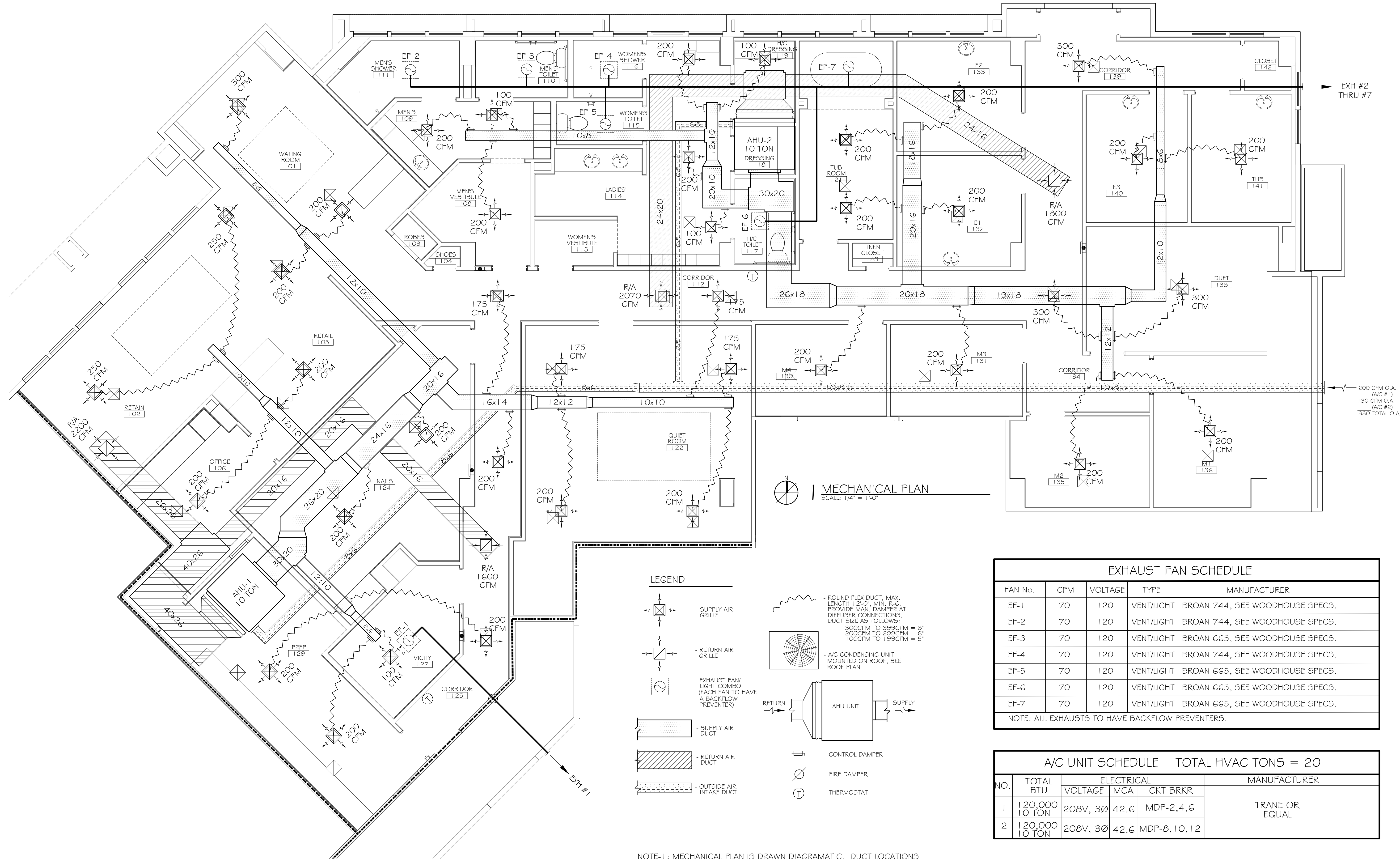
JOB No: 2163 DATE: 2/4/2013
DRAWN BY: KJK CHECKED BY: KJK

#	DESCRIPTION	DATE

REFLECTED CEILING PLAN

SHEET No: 4 OF 15

A-2



MECHANICAL PLAN
SCALE: 1/4" = 1'-0"

LEGEND

- SUPPLY AIR GRILLE
- RETURN AIR GRILLE
- EXHAUST FAN LIGHT COMBO (EACH FAN TO HAVE A BACKFLOW PREVENTER)
- SUPPLY AIR DUCT
- RETURN AIR DUCT
- OUTSIDE AIR INTAKE DUCT
- ROUND FLEX DUCT, MAX. LENGTH 12'-0". MIN. R.G. PROVIDE MAN. DAMPER AT DIFFUSER CONNECTIONS. DUCT SIZE AS FOLLOWS:
300CFM TO 399CFM = 8"
200CFM TO 299CFM = 6"
100CFM TO 199CFM = 5"
- AC CONDENSING UNIT MOUNTED ON ROOF, SEE ROOF PLAN
- AHU UNIT
- CONTROL DAMPER
- FIRE DAMPER
- THERMOSTAT

NOTE-1: MECHANICAL PLAN IS DRAWN DIAGRAMATIC. DUCT LOCATIONS ARE FOR REFERENCE ONLY. FIELD LOCATE AS NEEDED BETWEEN JOISTS OR TRUSSES. INSTALL FIRE DAMPER AT ANY LOCATION WHERE DUCT PENETRATES A FIRE WALL OR CEILING. ANY EXHAUST FAN FIXTURE INSTALLED IN A RATED CEILING SHALL BE RATED FOR THAT CEILING. REFER TO MECHANICAL NOTES # DETAILS ON SHEET M-2 FOR FURTHER INFORMATION.

NOTE-2: COORDINATE LOCATION OF ALL SUPPLY AIR DIFFUSERS, RETURN AIR GRILLES, EXHAUST FANS, ETC... WITH LIGHTING PLAN.

EXHAUST FAN SCHEDULE					
FAN No.	CFM	VOLTAGE	TYPE	MANUFACTURER	
EF-1	70	120	VENT/LIGHT	BROAN 744, SEE WOODHOUSE SPECS.	
EF-2	70	120	VENT/LIGHT	BROAN 744, SEE WOODHOUSE SPECS.	
EF-3	70	120	VENT/LIGHT	BROAN 665, SEE WOODHOUSE SPECS.	
EF-4	70	120	VENT/LIGHT	BROAN 744, SEE WOODHOUSE SPECS.	
EF-5	70	120	VENT/LIGHT	BROAN 665, SEE WOODHOUSE SPECS.	
EF-6	70	120	VENT/LIGHT	BROAN 665, SEE WOODHOUSE SPECS.	
EF-7	70	120	VENT/LIGHT	BROAN 665, SEE WOODHOUSE SPECS.	

NOTE: ALL EXHAUSTS TO HAVE BACKFLOW PREVENTERS.

A/C UNIT SCHEDULE TOTAL HVAC TONS = 20					
NO.	TOTAL BTU	ELECTRICAL			MANUFACTURER
		VOLTAGE	MCA	CKT BRKR	
1	120,000 10 TON	208V, 3Ø	42.6	MDP-2,4,6	TRANE OR EQUAL
2	120,000 10 TON	208V, 3Ø	42.6	MDP-8,10,12	

AHU UNIT SCHEDULE TOTAL HVAC TONS = 20								
NO.	TOTAL BTU	CFM	O.A.	HEAT ELEC.	ELECTRICAL			MANUFACTURER
					VOLTAGE	MCA	CKT BRKR	
1	120,000 10 TON	4,000	200	25 KW	208V, 3Ø	83.0	MDP-1,3,5	TRANE OR EQUAL
2	120,000 10 TON	4,000	130	25 KW	208V, 3Ø	83.0	MDP-7,9,11	

DAMMON
ENGINEERING, INC.
Architects & Engineers

dammonengr.com
dammonengr@bellsouth.net
PHONE: 985-649-5332
FAX: 985-641-5950

CHIEF ENGINEER: BRAMETT DAMMON, P.E.
CHIEF ARCHITECT: KEVIN KIRCHEN
554 OLD SPANISH TRAIL
SUDELL, LA 70458

WOODHOUSE SPA
THE HIGH GROVE APARTMENTS
BATON ROUGE, LA

JOB No: 2163 DATE: 5/14/2013 CHECKED BY: KJK

DRAWN BY: KJK/JTL

#

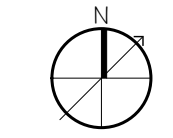
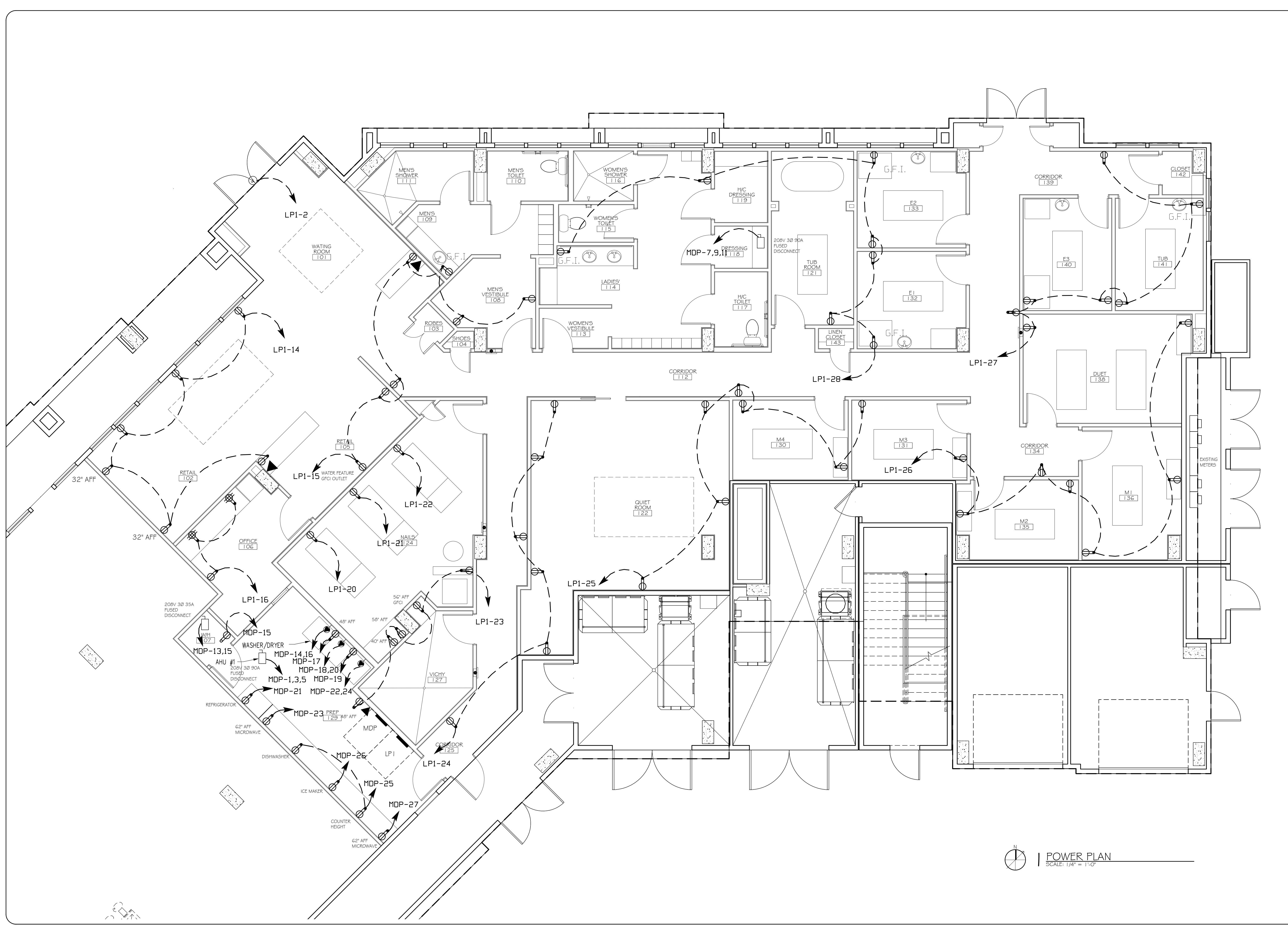
DESCRIPTION

DATE

MECHANICAL PLAN

SHEET No: 7 OF 15

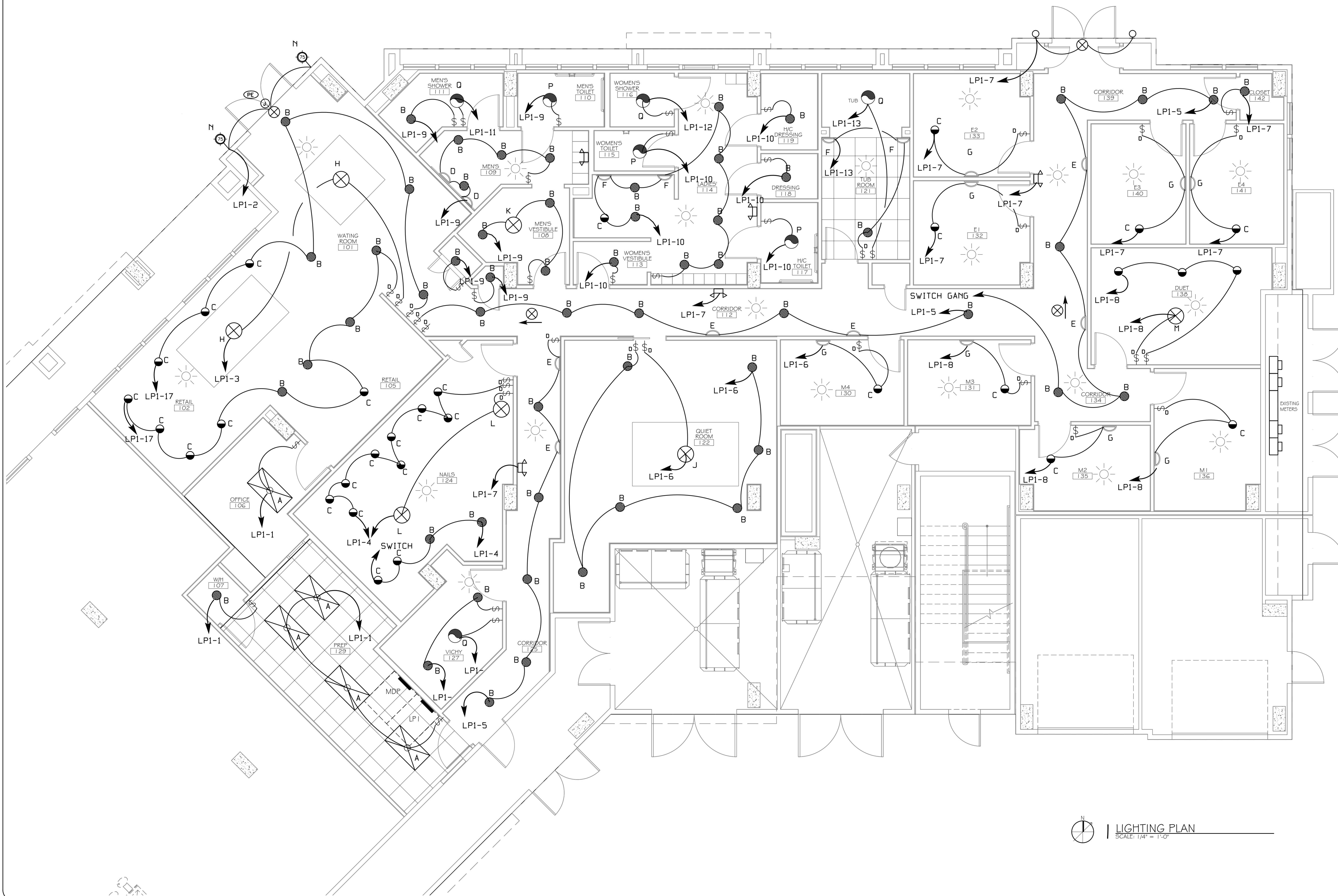
M-1



POWER PLAN
SCALE: 1/4" = 1'-0"

#	DESCRIPTION	REVISIONS	DATE

NOTE: ALL LIGHT FIXTURES AND LUMINAIRES ARE TO BE DIMMABLE AND CONNECTED TO A SLIDING DIMMER PACK, EXCEPT: OFFICE, MECHANICAL RM AND CLOSETS.




LIGHTING PLAN
 SCALE: 1/4" = 1'-0"

WOODHOUSE SPA
 THE HIGH GROVES APARTMENTS
 BATON ROUGE, LA

#	DESCRIPTION	DATE

LIGHTING PLAN

SHEET No: 10 OF 15

E-2


DAMMON
 ENGINEERING, INC.
 Architects & Engineers

CHIEF ENGINEER: DAMON DANON, P.E.
 CHIEF ARCHITECT: KEVIN KIRCHEN
 554 OLD SPANISH TRAIL
 SUITE 100
 SUDELL, LA 70455
 PHONE: 985-649-5932
 FAX: 985-641-5950

The above drawings and specifications, when read in conjunction with the contract documents, shall constitute the entire agreement between the parties hereto. No verbal agreements or conditions, written or otherwise, shall be binding on the parties unless specifically incorporated into the contract documents.

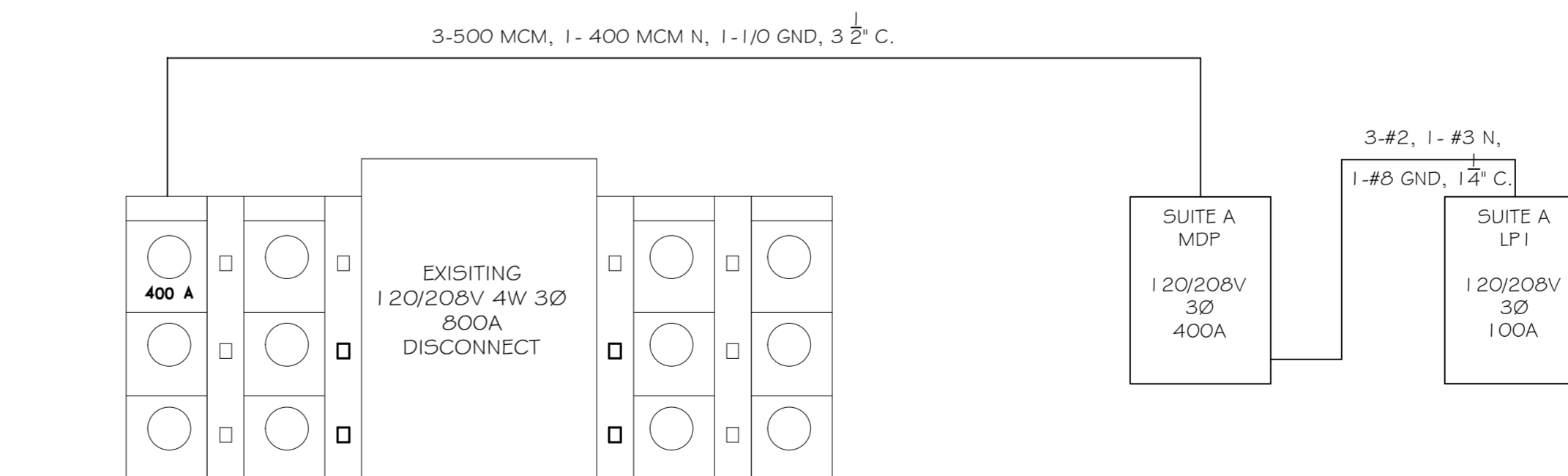
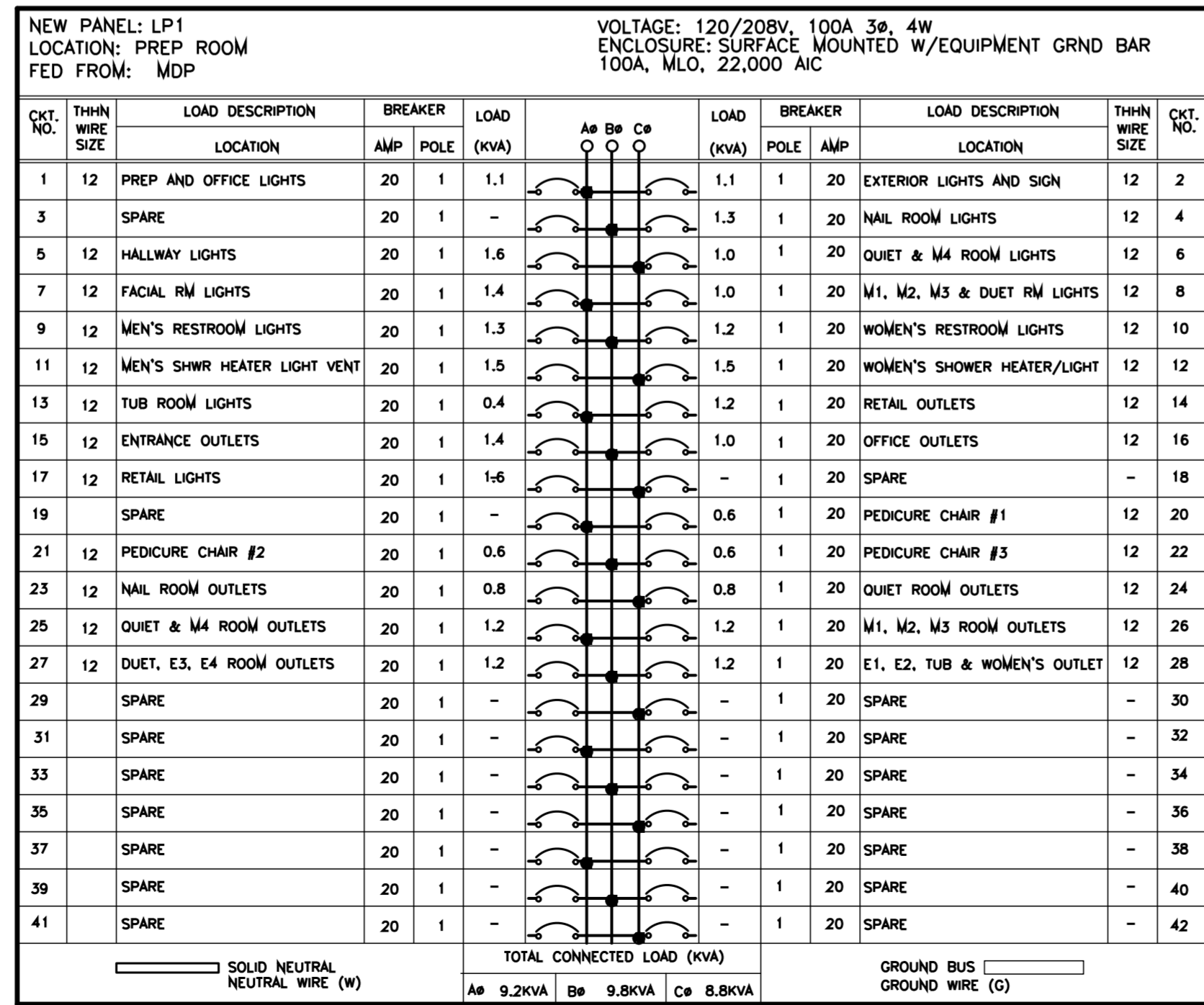
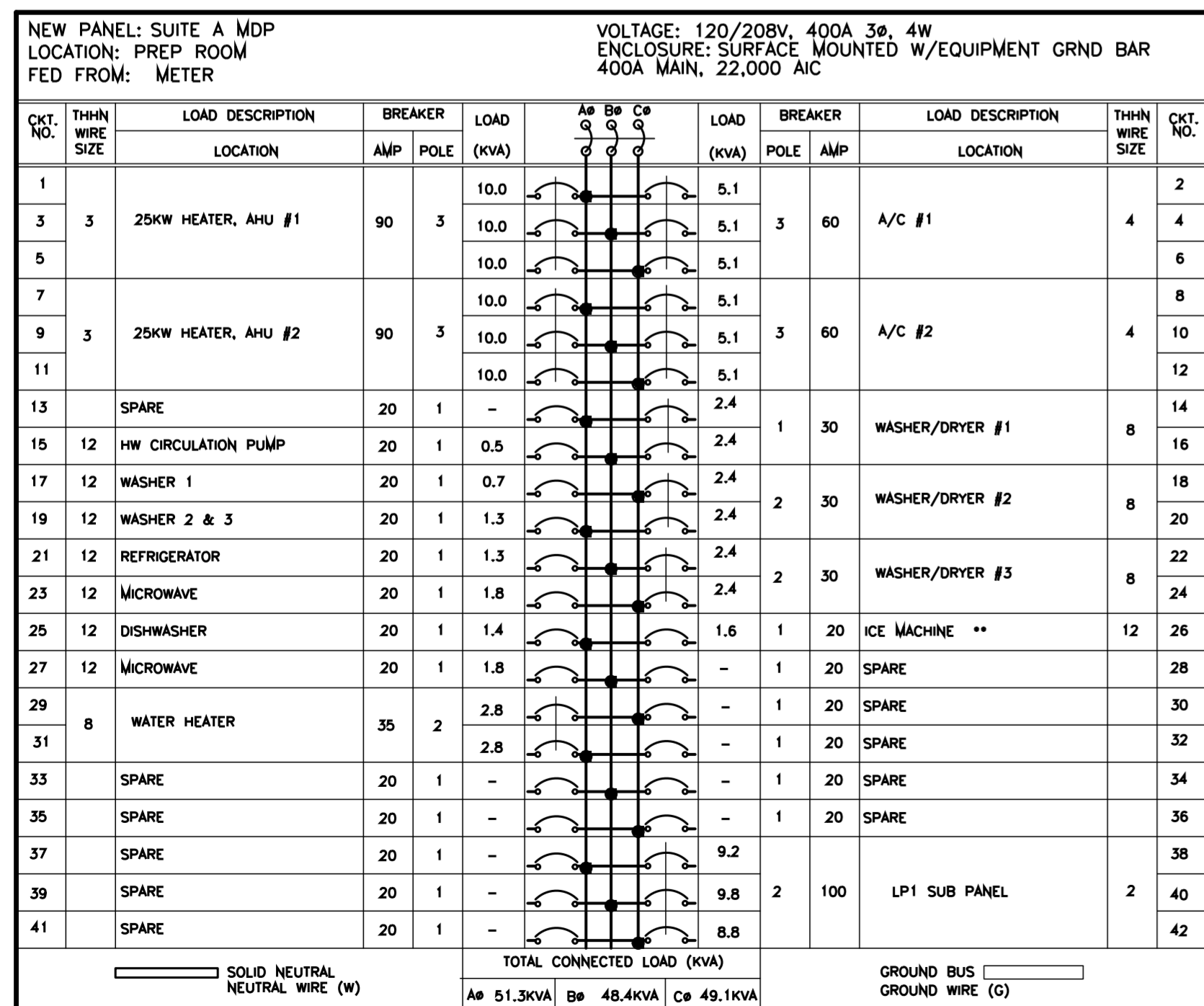
JOB No: 2163 DATE: 5/14/2013
 DRAWN BY: KJK CHECKED BY: KJK

LUMINAIRE SCHEDULE							
MARK	LAMPS		VOLTS	DESCRIPTION	OPTIONS & NOTES	MANUFACTURER	CATALOG NO.
	NO.	TYPE					
A	2	32WT8	120	2'x4' FLUORESCENT LAY-IN TROFFER.		LIGHTOLIER	QV52GFF05232
B	1	32WCF DIMM	120	COMPACT FLUORESCENT DOWNLIGHT (LED OPTIONAL)		LIGHTOLIER	1102P1 FRAME 1176WH BAFFLE
C	1	32WCF DIMM	120	DIRECTIONAL COMPACT FLUORESCENT DOWNLIGHT (LED OPTIONAL)		LIGHTOLIER	1102P1 FRAME 1122WH BAFFLE
D	1	40W	120	GALEANA WALL SCONCE	MEN'S RESTROOM	UTTERMOST	22418
E	2	60W	120	ALENYA, 2 LIGHT WALL SCONCE	HALLWAY	UTTERMOST	22487
F	3	60W	120	MAISON DE VILLE COLLECTION 18" HIGH 3-LIGHT WALL SCONCE; USES 3-60 CANDELABRA BULBS	WOMEN'S RESTROOM	FEISS	12290
G	2	A15 60W	120	IRON LEAF 15 1/2" WIDE BRONZE AND CRYSTAL WALL SCONCE	TUB ROOM	UNIVERSAL LIGHTING AND	50921
H	5	60 W	120	KATHY IRELAND RAMAS DE LUCES BRONZE 31" WIDE CHANDELIER; FIVE STANDARD 60 WATT AND ONE 30 WATT R-20 BULBS	WAITING/RETAIL	DECOR KATHY IRELAND	P0311
J	6	60 W	120	ALENYA, 6 LT CHANDELIER	QUIET ROOM	UTTERMOST	21246
K	3	100 W	120	GALEANA, 3 LT CHANDELIER	MEN'S VESTIBULE	UTTERMOST	21046
L	4	60 W	120	ALENYA, 4 LT PENDANT	NAIL ROOM	UTTERMOST	21962
M	3	60 W	120	KATHY IRELAND RAMAS DE LUCES BRONZE 17" WIDE CHANDELIER	DUET ROOM	KATHY IRELAND	97436
N	2	60W	120	KENT PLACE COLLECTION WALL LANTERN USES 3-60 CANDELABRA BULBS	INCLUDE PHOTO SENSOR	MINKA LAVERY	94585
P	1	100W	120	LIGHT/FAN; 70 CFM	INCLUDE OPTIONAL CONTROL	BROAN	744
Q	1	100W	120	HEATER/LIGHT/FAN; 70 CFM	INCLUDE OPTIONAL CONTROL	BROAN	665
S		WITH UNIT	120	SELF-POWERED LED EXIT SIGN, WHITE BACKGROUND WITH RED LETTERS.		HUBBELL	EXIT SIGN
T		WITH UNIT	120	SELF-POWERED EMERGENCY EGRESS LUMINAIRE, TWO-HEAD		HUBBELL	PEG

NOTE: LAMPS AND FIXTURES SUPPLIED AND INSTALLED BY CONTRACTOR. FOR COORDINATION CONTACT: SARA NEWMAN WOODHOUSE SPAS CORPORATION (361) 570-7772 EXT 202. CHANDELIERS/SCONCES BY LAMPS PLUS CONTACT: JENNIFER LY (818) 778-5751 EXT 4375.

LIGHTING SCHEDULE NOTES:

- FURNISH PROPER LAMP FOR REFLECTOR ASSEMBLY SPECIFIED AS RECOMMENDED BY LUMINAIRE MANUFACTURER.
- ENERGY SAVING LAMP/ENERGY SAVING BALLAST.
 - FURNISH ALL RAPID START LAMPED LUMINAIRES WITH ENERGY EFFICIENT LAMPS AND BALLAST. SYSTEM OF LAMPS AND BALLAST SHALL PRODUCE THE FOLLOWING WHEN USED TOGETHER AT MINIMUM 60 DEGREE F:
 - MAXIMUM LAMP OUTPUT - 2800 LUMENS.
 - MAXIMUM LAMP WATTAGE - 35 WATTS.
 - MAXIMUM BALLAST LOADING (2 LAMP BALLAST) WITH LAMPS IN OPERATION - 77 WATTS.
 - BALLAST SHALL BE EQUIPPED WITH UL COMPONENT RECOGNIZED NON-PCB PROTECTED CAPACITOR AND A CORE AND COIL PROTECTOR. BALLAST SHALL BE HIGH POWER FACTOR, UL LISTED, CLASS P.
 - APPROVED LAMP MANUFACTURERS:
 - GE, SYLVANIA, PHILIPS (UNLESS SPECIFICALLY NOTED OTHERWISE)
 - APPROVED BALLAST MANUFACTURERS:
 - ADVANCE, MAGNETEK, VALMONT, PLUS.
 - FLUORESCENT AND H.I.D. BALLASTS SHALL BE FUSED WITH AN APPROVED DUAL ELEMENT.
 - ALL LIGHT FIXTURES ARE TO BE DIMMABLE AND CONNECTED TO A DIMMING DIMMER, EXCEPT: PREP ROOM, OFFICE, MECHANICAL RM AND CLOSETS.



LEGEND OF ELECTRICAL SYMBOLS

MISCELLANEOUS

- POWER PANEL
- MOTOR: SHOWN 2HP (TYPICAL)
- FUSED DISCONNECT SWITCH, 100A, 3P UNLESS OTHERWISE NOTED.
- NON-FUSED DISCONNECT SWITCH, 100A, 3P UNLESS OTHERWISE NOTED.
- FLUSH MOUNTED CIRCUIT BREAKER.
- MOTOR CONTROLLER OR MAGNETIC MOTOR STARTER, NEMA SIZE 1 FWR UON
- PULL BOX. SIZE PER NATIONAL ELECTRICAL CODE.
- PHOTOCELL.
- EXHAUST FAN.
 - 1000W DIAMETER, LUTRON (N=1500)
 - 2000W DIAMETER, LUTRON (N=2000)
 - EXTERIOR LIGHT WITH PHOTO SENSOR
 - WALL DATA/TELEPHONE
- SOUND SYSTEM PROVIDED AND INSTALLED BY CONTRACTOR - VOLUME CONTROL IN ALL TREATMENT ROOMS. VOLUME CONTROL FOR ALL COMMON AREAS TO BE LOCATED IN PREP ROOM. 8" IN CEILING ENCLOSED SPEAKERS IN ALL ROOMS. SEE WOODHOUSE SPECIFICATION.

WALL SWITCHES

- 1-POLE, 15A, 125V, ROCKER ON/OFF; MOUNT 48" TO CENTERLINE OF SWITCH. COLOR TO BE DETERMINED BY OWNER.
- 1-POLE, 600V, 125V, SLIDE, DAMPER WITH ROCKER ON/OFF; MOUNT 48" TO CENTERLINE OF SWITCH. COLOR TO BE DETERMINED BY OWNER.
- 3-WAY, 20A, 125V, MOUNT 48" TO CENTERLINE OF SWITCH. COLOR TO BE DETERMINED BY OWNER.

CEILING OUTLETS

- SURFACE OR RECESSED LUMINAIRE TYPE "A", CIRCUIT #1.
- RECESSED FLUORESCENT 2' x 4' LUMINAIRE. SEE LUMINAIRE SCHEDULE.
- RECESSED FLUORESCENT 2' x 4' LUMINAIRE WITH BATTERY PACK. SEE LUMINAIRE SCHEDULE.
- JUNCTION BOX.
- JUNCTION BOX WITH FLEXIBLE CONNECTION TO EQUIPMENT.
- EXIT LIGHT, SEE LUMINAIRE SCHEDULE.
- EXIT LIGHT WITH DIRECTION OF TRAVEL. SEE LUMINAIRE SCHEDULE.

WALL OUTLETS

- DUPLEX RECEPTACLE, NEMA 5-15R
- QUAD RECEPTACLE, NEMA 5-15R
- SINGLE RECEPTACLE: 20A, 250V, 2-POLE, 3-WIRE, NEMA 6-20R.
- SINGLE RECEPTACLE: 30A, 250V, 2-POLE, 3-WIRE, NEMA 6-30R.
- SINGLE RECEPTACLE: 50A, 250V, 2-POLE, 3-WIRE, NEMA 6-50R.
- DUPLEX RECEPTACLE, NEMA 5-20R.
- DUPLEX RECEPTACLE, NEMA 5-15R, GROUND FAULT INTERRUPTER, FEED-THRU. MOUNT 18" AFF TO CENTER OF BOX UON.
- DUPLEX RECEPTACLE, NEMA 5-15R, GROUND FAULT INTERRUPTER, FEED-THRU. WEATHERPROOF. MOUNT 18" AFF TO CENTER OF BOX UON.
- SINGLE RECEPTACLE, NEMA 5-50R 18" UNLESS OTHERWISE NOTED.
- FLUSH MOUNTED JUNCTION BOX.
- JUNCTION BOX WITH FLEXIBLE CONNECTION.
- TELEPHONE OUTLET: SINGLE GANG OUTLET BOX WITH AN R445 JACK MOUNTED 18" AFF. HOMERUN A CATEGORY 5 CABLE TO TELEPHONE AND DATA BACKBOARD.
- TELEPHONE OUTLET: SINGLE GANG OUTLET BOX WITH AN R445 JACK MOUNTED 44" AFF. HOMERUN A CATEGORY 5 CABLE TO TELEPHONE AND DATA BACKBOARD.
- DATA OUTLET: SINGLE GANG OUTLET BOX WITH AN R445 JACK MOUNTED 18" AFF. HOMERUN A CATEGORY 5 CABLE TO TELEPHONE AND DATA BACKBOARD.
- DATA OUTLET: SINGLE GANG OUTLET BOX WITH AN R445 JACK MOUNTED 44" AFF. HOMERUN A CATEGORY 5 CABLE TO TELEPHONE AND DATA BACKBOARD.
- TELEPHONE & DATA BACKBOARD, 48" x 48" 3/4" PLYWOOD. PROVIDE GROUNDING TERMINAL CONNECTED WITH #6 CONDUCTOR TO NEAREST METALLIC COLD WATER PIPE OR GROUNDING ELECTRODE.
- WALL MOUNTED INCANDESCENT OR HID LUMINAIRE.
- EMERGENCY LIGHT. SEE LUMINAIRE SCHEDULE.

GENERAL NOTES:

GENERAL REQUIREMENTS

- ELECTRICAL CONTRACTOR SHALL COORDINATE FULLY WITH OTHER CONTRACTORS ASSOCIATED WITH THIS PROJECT TO VERIFY ALL EQUIPMENT LOCATIONS, CONNECTION REQUIREMENTS, ELEVATIONS AND LOCATIONS OF PIPES, CONDUITS AND DUCTS TO PREVENT CONFLICTS DURING CONSTRUCTION. ANY RELOCATION OR REROUTING OF EQUIPMENT, PIPES, CONDUITS, DUCTS OR MATERIALS RESULTING FROM A LACK OF COORDINATION BETWEEN CONTRACTORS WILL BE AT THE CONTRACTOR'S EXPENSE.
- EQUIPMENT ROUGH-IN'S SHOWN ARE ACCURATE TO THE BEST OF DESIGNER'S KNOWLEDGE. HOWEVER, IN SOME INSTANCES, THE OWNER OR SUPPLIER MAY SUBSTITUTE, OR THE EQUIPMENT ITEM MAY VARY FROM WHAT IS SHOWN. THEREFORE, THE CONTRACTOR SHALL VERIFY ALL CRITICAL DIMENSIONS WITH THE OWNER PRIOR TO CONSTRUCTION. FAILURE OF THE ELECTRICAL CONTRACTOR TO VERIFY THESE DIMENSIONS SHALL PLACE THE RESPONSIBILITY FOR ANY SUBSEQUENT RELOCATION DIRECTLY UPON THE CONTRACTOR.
- ELECTRICAL CONTRACTOR SHALL FURNISH AND INSTALL ALL REQUIRED DISCONNECT SWITCHES AND MOTOR STARTERS TO ALL EQUIPMENT.
- ELECTRICAL CONTRACTOR SHALL REVIEW WITH OWNER AND SIGNAGE MANUFACTURER, REQUIREMENTS AND LOCATION OF BUILDING SIGNAGE PRIOR TO CONSTRUCTION AND PROVIDE 120VAC CONNECTION AS REQUIRED.
- ELECTRICAL CONTRACTOR SHALL PROVIDE AS-BUILT DRAWINGS AT JOB COMPLETION TO ARCHITECT.
- ALL WORK SHALL BE INSTALLED PER ALL GOVERNING CODES.
- ELECTRICAL CONTRACTOR SHALL FURNISH AND INSTALL DRYER/RECEPTACLES COMPLETE. REFER TO INSTRUCTION MANUAL FOR DETAILS.
- ALL EXTERIOR LIGHTING AND SIGN CIRCUIT BREAKERS TO BE "SWITCH GRADE".
- ELECTRICAL CONTRACTOR SHALL INSTALL EXHAUST FANS WITH OPTIONAL CONTROLLER.
- ALL JUNCTION BOXES INSTALLED ABOVE OR DIRECTLY BELOW THE SUSPENDED CEILING SHALL BE SUPPORTED IN ACCORDANCE WITH ARTICLE 314-23 OF THE 2002 NEC.
- COMPUTER AND PHONE WIRING SHALL BE ROUTED IN 3/4" CONDUIT TO PHONE BOARD IN OFFICE FROM DEVICE LOCATION.
- ALL ISOLATED GROUND RECEPTACLE CIRCUITS SHALL BE EQUIPPED WITH INSULATED GROUND CONDUCTOR AND SEPARATE NEUTRAL WIRE.
- NEUTRAL WIRES FOR ISOLATED GROUND CIRCUITS SHALL NOT BE SHARED WITH OTHER BRANCH CIRCUITS. PROVIDE SEPARATE NEUTRAL WIRE FOR EACH ISOLATED GROUND CIRCUIT.
- ISOLATED GROUND CIRCUITS SHALL NOT BE ROUTED WITHIN SAME CONDUIT AS GENERAL BRANCH CIRCUIT WIRING. PROVIDE SEPARATE CONDUIT FOR SERVICE TO ISOLATED GROUND CIRCUITS.
- ISOLATED GROUND RECEPTACLES SHALL UNDER NO CIRCUMSTANCE BE INSTALLED IN COMMON JUNCTION BOX WITH NON-ISOLATED GROUND TYPE RECEPTACLE.
- ELECTRICAL CONTRACTOR SHALL USE THE PORCELAIN WIRE NUTS PROVIDED WITH THE HEAT STRIP UNITS. THE USE OF PLASTIC WIRE NUTS WILL VOID THE MANUFACTURER'S WARRANTY. ELECTRICAL CONTRACTOR SHALL USE 80% WIRE FOR CONNECTION TO HEAT STRIP UNITS PER MANUFACTURER'S RECOMMENDATION.
- USE CIRCUIT BREAKERS U.L. LISTED AS HACR TYPE FOR USE WITH HVAC AND REFRIGERATING EQUIPMENT HAVING MOTOR GROUP COMBINATIONS AND MARKED FOR USE WITH HACR TYPE CIRCUIT BREAKERS.
- ALL EXIT SIGNS, EMERGENCY EGRESS LIGHTS AND NIGHT LIGHT FIXTURES SHALL BE CONNECTED TO THE BRANCH CIRCUITS INDICATED AHEAD OF RESPECTIVE CONTROL SWITCH, IN ORDER TO PROVIDE UNSWITCHED SOURCE TO FIXTURES.

RACEWAY SYSTEMS

- ALL BRANCH CIRCUIT WIRING SHALL BE ROUTED IN EMT, ELECTRICAL METALLIC TUBING, USE STEEL SET SCREW TYPE FITTERS ON ALL EMT.
- CONDUIT SHALL BE SUPPORTED AT INTERVALS PER NEC REQUIREMENTS AND SHALL BE SECURELY FASTENED TO BUILDING WITH AN APPROVED FASTENING SYSTEM.

WIRING, WIRING DEVICES, PLATES AND GROUNDING

- ALL WIRING SHALL CONSIST OF COPPER CONDUCTORS WITH THERMOPLASTIC INSULATION RATED FOR 90 DEGREES (90C) UNLESS OTHERWISE NOTED. ALL WIRING INSULATION SHALL BE HEAT AND MOISTURE RESISTANT TYPES THW, THWN, OR THHN FOR INTERIOR AND DRIVE LOCATIONS.
- MINIMUM CONDUCTOR SIZE SHALL BE NO. 12 AWG FOR ALL POWER CIRCUITS (I.E. RECEPTACLES, LIGHTING, EQUIPMENT POWER, ETC.).
- ALL SPLICES AND CONNECTIONS SHALL BE MADE IN OUTLET BOXES, JUNCTION BOXES OR EQUIPMENT WHERE ACCESSIBLE. CONDUCTORS SHALL BE PULLED WITHOUT THE USE OF OIL OR GREASE. WIRE PULLING LUBRICANTS WHICH ARE APPROVED FOR USE WITH CONDUCTOR INSULATION MAY BE USED. CARE SHALL BE TAKEN IN PULLING WIRE TO ASSURE THAT MAXIMUM ALLOWABLE PULLING TENSION OF WIRE IS NOT EXCEEDED. WIRING WITH DAMAGED CONDUCTORS OR INSULATION WILL NOT BE ACCEPTED.
- ALL PLUG-IN DEVICES SHALL BE GROUNDED TYPE. A GROUNDING JUMPER FROM RECEPTACLE TO OUTLET BOX SHALL BE INSTALLED WHERE CONDUIT SYSTEM IS USED FOR GROUNDING.
- INSTALL INSULATED GREEN GROUNDING CONDUCTOR (NO. 12 AWG MINIMUM) IN RACEWAYS AS INDICATED ON DRAWINGS AND IN ALL NON-METALLIC RACEWAYS PER NEC.
- SWITCHES FOR LIGHTING CONTROL SHALL BE ROCKER STYLE WITH.
- DUPLEX RECEPTACLES SHALL BE INDUSTRIAL GRADE, THREE (3) WIRE GROUNDING, FINGER GROOVE, TWENTY (20) AMP, NEMA 5-20R 125 VAC.
- PLATES SHALL BE FURNISHED AND INSTALLED FOR ALL WIRING DEVICES, TELEPHONE OUTLETS, JUNCTION BOXES, ETC.
- PLATES FOR FLUSH MOUNTED DEVICES SHALL BE STAINLESS STEEL. PLATES FOR SURFACE MOUNTED BOXES SHALL BE GALVANIZED STEEL.

LIGHTING FIXTURES

- PROVIDE LIGHTING FIXTURES, OF SIZES, TYPES AND RATINGS INDICATED; COMPLETE WITH, BUT NOT LIMITED TO, HOUSINGS, ENERGY EFFICIENT LAMPS, LAMP HOLDERS, REFLECTORS, ENERGY EFFICIENT BALLASTS, STARTERS AND WIRING. SHIP FIXTURES FACTORY-ASSEMBLED, WITH THOSE COMPONENTS REQUIRED FOR A COMPLETE INSTALLATION. DESIGN FIXTURES WITH CONCEALED HANGES AND CATCHES, WITH METAL PARTS GROUNDED AS COMMON UNIT, AND SO CONSTRUCTED AS TO DAMPEN BALLAST GENERATED NOISE.
- FLUORESCENT BALLASTS PROVIDED FOR FOUR (4) FOOT 1-8 FLUORESCENT LAMPS SHALL BE TWO-LAMP ENERGY SAVING, ELECTRONIC TYPE.
- INSTALL INTERIOR LIGHTING FIXTURES AT LOCATIONS AS INDICATED, IN ACCORDANCE WITH FIXTURE MANUFACTURER'S WRITTEN INSTRUCTIONS, APPLICABLE REQUIREMENTS OF NEC, NECA'S "STANDARD OF INSTALLATION", NEMA STANDARDS, AND WITH RECOGNIZED INDUSTRY PRACTICES TO ENSURE THAT LIGHTING FIXTURES FULFILL REQUIREMENTS.
- PROVIDE AND INSTALL ALL LIGHT FIXTURES INDICATED COMPLETE WITH SPECIFIED LAMPS. FLUORESCENT LAMPS SHALL BE 48" 30W T-8, RAPID START WITH NOMINAL OPERATING TEMPERATURES OF 3,500 K - MINIMUM INITIAL LIGHT OUTPUT OF 2850 LUMENS. COMPACT FLUORESCENT LAMPS SHALL BE 26 WATT COMPACT FLUORESCENT LAMPS SHALL BE HIGH COLOR RENDERING, HIGH EFFICIENCY LAMPS WITH NOMINAL OPERATING TEMPERATURE OF 3,500 K.
- FASTEN LIGHTING FIXTURES SECURELY TO STRUCTURAL SUPPORTS; AND ENSURE THAT FIXTURES ARE PLUMB AND LEVEL.
- FLUORESCENT FIXTURES INSTALLED IN LAY-IN CEILINGS SHALL BE SUPPORTED BY ADDITIONAL WIRE SUPPORT AT TWO CORNERS, ATTACHED TO CEILING GRID, AND ANCHORED TO STRUCTURAL MEMBER. THIS ADDITIONAL WIRE SUPPORT SHALL BE THE RESPONSIBILITY OF THE ELECTRICAL CONTRACTOR AND IS NOT CONSIDERED PART OF GENERAL GRID LAYOUT.
- PROVIDE EQUIPMENT GROUNDING CONNECTIONS FOR INTERIOR LIGHTING FIXTURES AS INDICATED. TIGHTEN CONNECTION TO COMPLY WITH TIGHTENING TORQUES SPECIFIED IN UL STD 488A TO ASSURE PERMANENT AND EFFECTIVE GROUNDS.
- ALL LIGHT FIXTURES SHALL BE U.L. LISTED.

FIRE RATED WALL PENETRATIONS

- PROVIDE U.L. LISTED FIRESTOP SYSTEM SEALANTS AROUND ALL CONDUITS PASSING THROUGH ALL RATED WALLS OR FLOORS IN ACCORDANCE WITH THE U.L. FIRE RESISTANCE DIRECTORY.
- THE SELECTED SYSTEM MUST BEAR AN APPROVED U.L. PENETRATION SYSTEM NUMBER AND BE INSTALLED IN ACCORDANCE WITH THE SELECTED SYSTEM TAKING INTO ACCOUNT THE CONSTRUCTION AND THE RATING OF THE RATED ASSEMBLY BEING PENETRATED AND THE TYPE OF PENETRATION BEING MADE.
- THE ELECTRICAL CONTRACTOR SHALL REVIEW ARCHITECTURAL DRAWINGS TO CONFIRM NUMBER AND EXTENT OF ALL FIRE RATED PARTITIONS IN THE FACILITY.
- APPROVED PRODUCTS:
 - HULTI CS240
 - TERMOX FIRESHIELD
 - 3M CP-25

DAMMON ENGINEERING, INC.
Architects & Engineers

WOODHOUSE SPA
THE HIGH GROVE APARTMENTS
BATON ROUGE, LA

JOB No: 2163 DATE: 5/14/2013
DRAWN BY: KJK CHECKED BY: KJK

REVISIONS

#	DESCRIPTION	DATE

NOTES & SCHEDULE

SHEET No: 11 OF 15

E-3

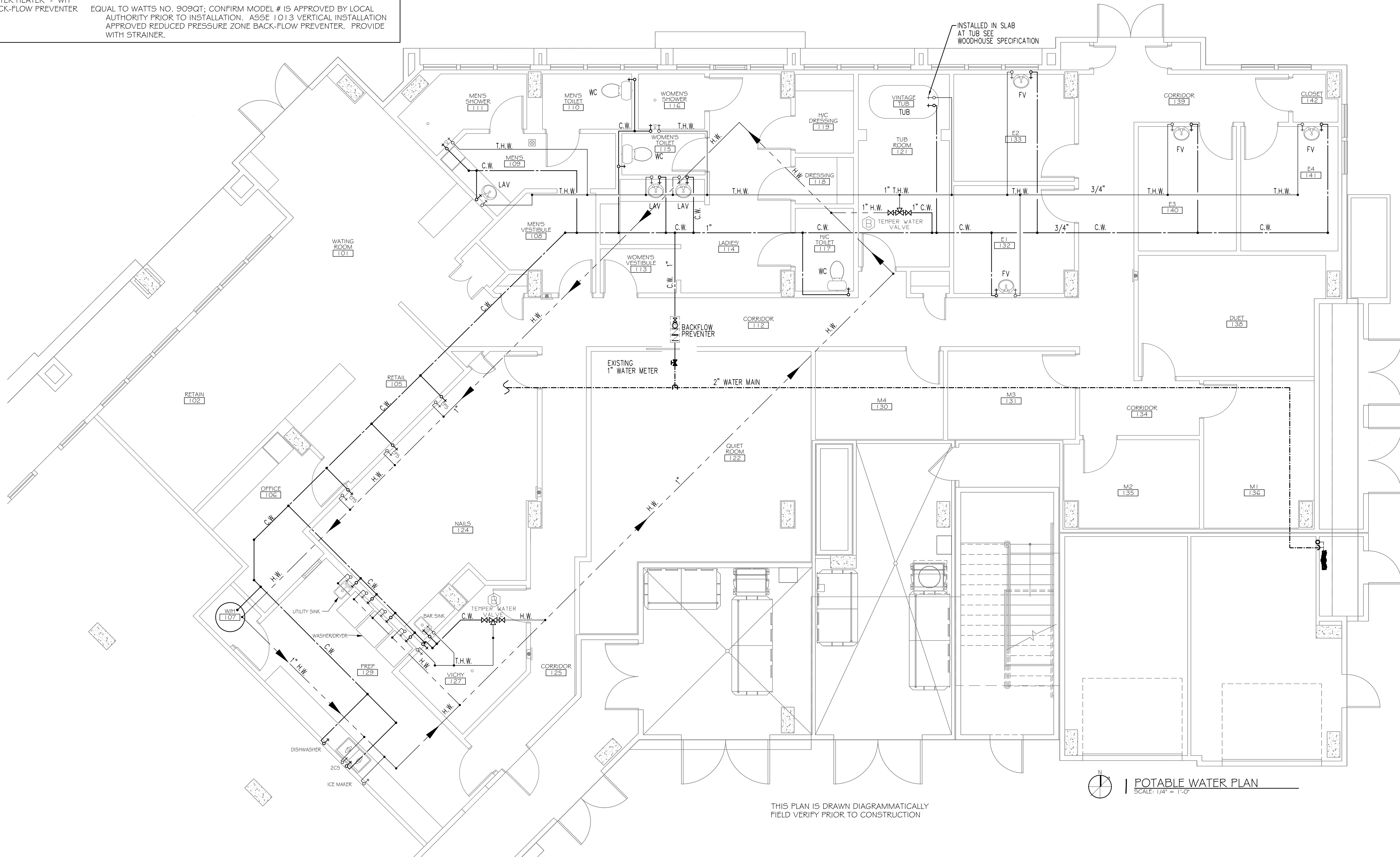
PLUMBING FIXTURE SCHEDULE

FIXTURE	DESCRIPTION
WATER CLOSET - "WC"	SEE WOODHOUSE SPECIFICATION.
LAVATORY - "LAV"	SEE WOODHOUSE SPECIFICATION; DELTA 2555RB-2 I GRB.
FACIAL VANITY - "FV"	SEE WOODHOUSE SPECIFICATION; VANITY SINK FAUCET.
VINATAGE TUB "TUB"	SEE WOODHOUSE SPECIFICATION; RANDOLPH MORRIS RM462ORB, RMN2000RB, RMN144FORB, RMN144IORB, RMN146SORB, .
SHOWER	SEE WOODHOUSE SPECIFICATION; DELTA R10000-IP, DELTA RPW124HDF, MONITOR 13 SERIES T13020.
VICHY SHOWER	SEE WOODHOUSE SPECIFICATION.
ECHO FOOT SPA "EFS"	SEE WOODHOUSE SPECIFICATION; CONTINUUM ECHO FOOT SPA. FOLLOW MANUFACTURER'S PLACEMENT OF HOT AND COLD WATER.
BAR SINK	SEE WOODHOUSE SPECIFICATION; 2190 SERIES.
TWO COMP SINK "2CS"	SEE WOODHOUSE SPECIFICATION; DELTA B241OLF.
DISHWASHER	SEE WOODHOUSE SPECIFICATION; FRIGIDAIR 24" BUILT-IN DISHWASHER.
ICE MAKER	SEE WOODHOUSE SPECIFICATION; WHIRLPOOL GOLD 15" ICE MAKER.
UTILITY SINK - "US"	SEE WOODHOUSE SPECIFICATION; DELTA B241OLF.
WATER HEATER - "WH"	EQUAL TO WATTS NO. 909QT; CONFIRM MODEL # IS APPROVED BY LOCAL AUTHORITY PRIOR TO INSTALLATION. ASSE 1013 VERTICAL INSTALLATION APPROVED REDUCED PRESSURE ZONE BACK-FLOW PREVENTER. PROVIDE WITH STRAINER.
BACK-FLOW PREVENTER	

C.W. - COLD WATER
 H.W. - HOT WATER
 T.W.H. - TEMPERED HOT WATER

PLUMBING SITE NOTES:

- IT IS THE RESPONSIBILITY OF THIS CONTRACTOR TO FIELD VERIFY ALL SITE CONDITIONS PRIOR TO STARTING ANY PHASE OF CONSTRUCTION. ANY CHANGES OR COST NOT SHOWN ON THESE DRAWINGS SHALL BE BROUGHT TO THE ATTENTION OF THE ARCHITECT, ENGINEER.
- ALL EXISTING UTILITIES SHOWN ON THIS PLAN ARE ASSUMED TO BE CORRECT. IT IS THE RESPONSIBILITY OF THIS CONTRACTOR TO PROPERLY VERIFY ALL UNDERGROUND UTILITIES.
- KEEP ALL CUTTING AND PATCHING TO A MINIMUM.
- IT IS RECOMMENDED THAT THE SUBCONTRACTOR ARRANGE A PRE-JOB CONFERENCE WITH THE CONSTRUCTION SUPERVISOR FOR REVIEW & CLARIFICATION PRIOR TO STARTING ANY WORK.



THIS PLAN IS DRAWN DIAGRAMMATICALLY
 FIELD VERIFY PRIOR TO CONSTRUCTION

POTABLE WATER PLAN
 SCALE: 1/4" = 1'-0"

DAMMON
 ENGINEERING, INC.
 Architects & Engineers

Administrative: 504-985-6411
 Fax: 504-985-6411-5990
 Phone: 504-985-6411-5932
 Email: dammon@dammon.net

CHIEF ENGINEER: BRADY DANNON, P.E.
 CHIEF ARCHITECT: KEVIN KINCHEN
 554 OLD SPANISH TRAIL
 SUITE 100
 SUDDLESS, LA 70458

WOODHOUSE SPA
 THE HIGH GROVES APARTMENTS
 BATON ROUGE, LA

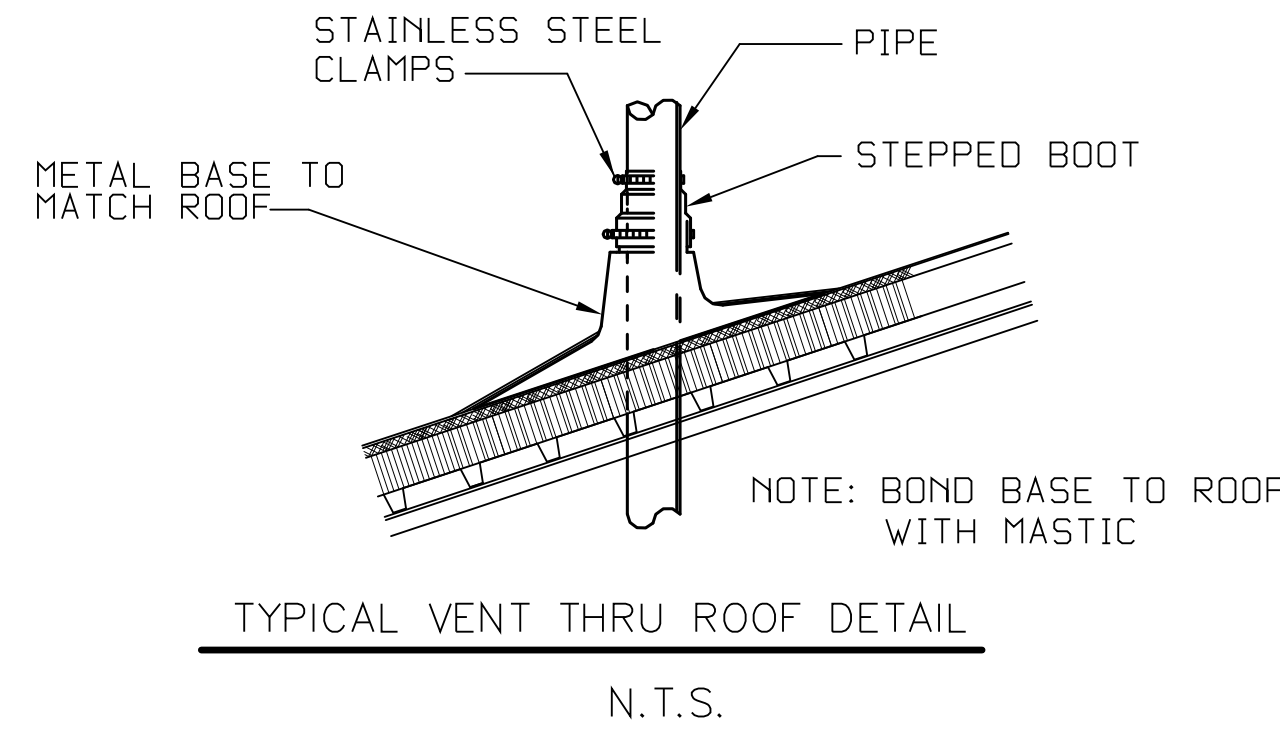
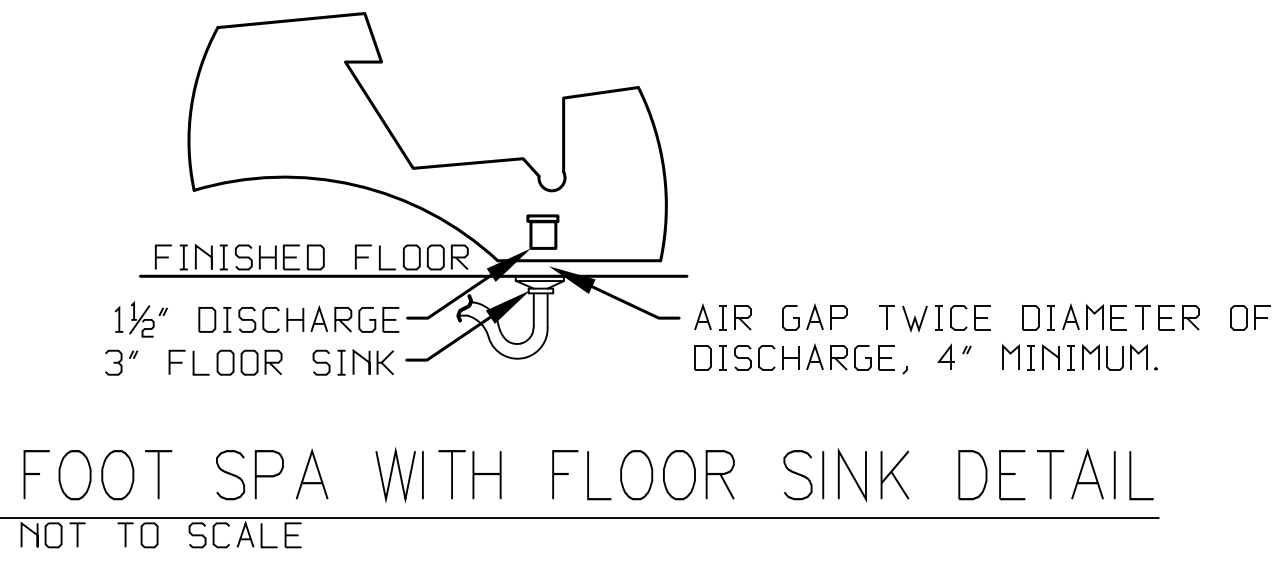
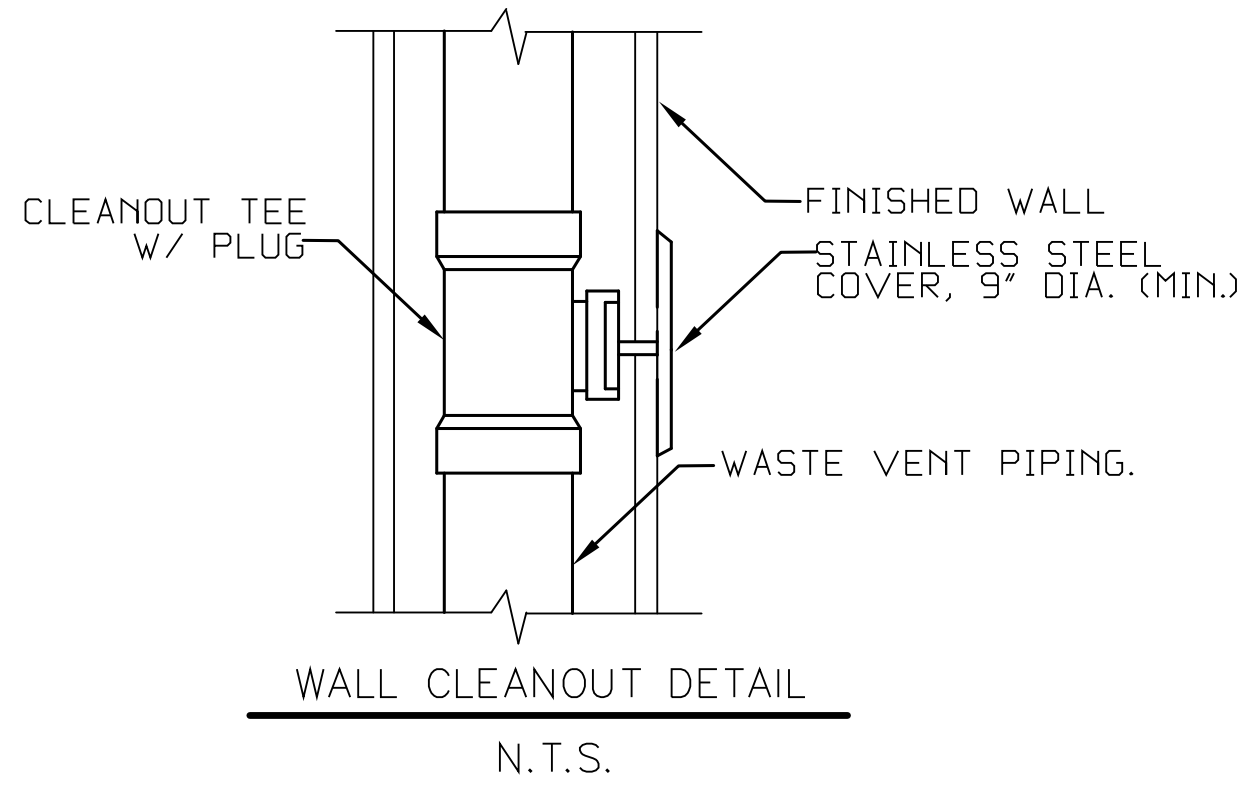
JOB No: 2163 DATE: 5/14/2013 CHECKED BY: KJK
 DRAWN BY: JCT

#	DESCRIPTION	DATE

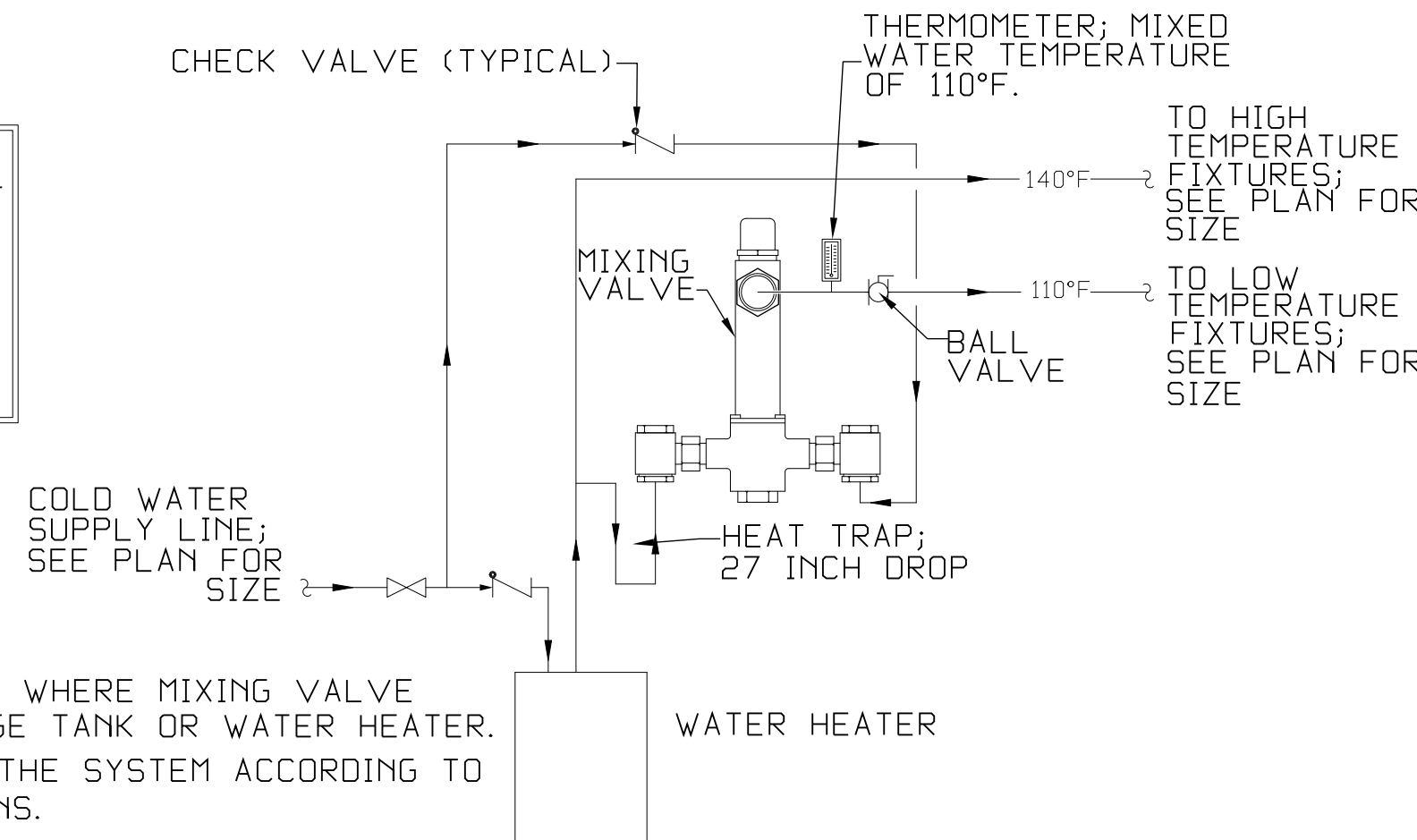
POTABLE WATER PLAN

SHEET No: 13 OF 15

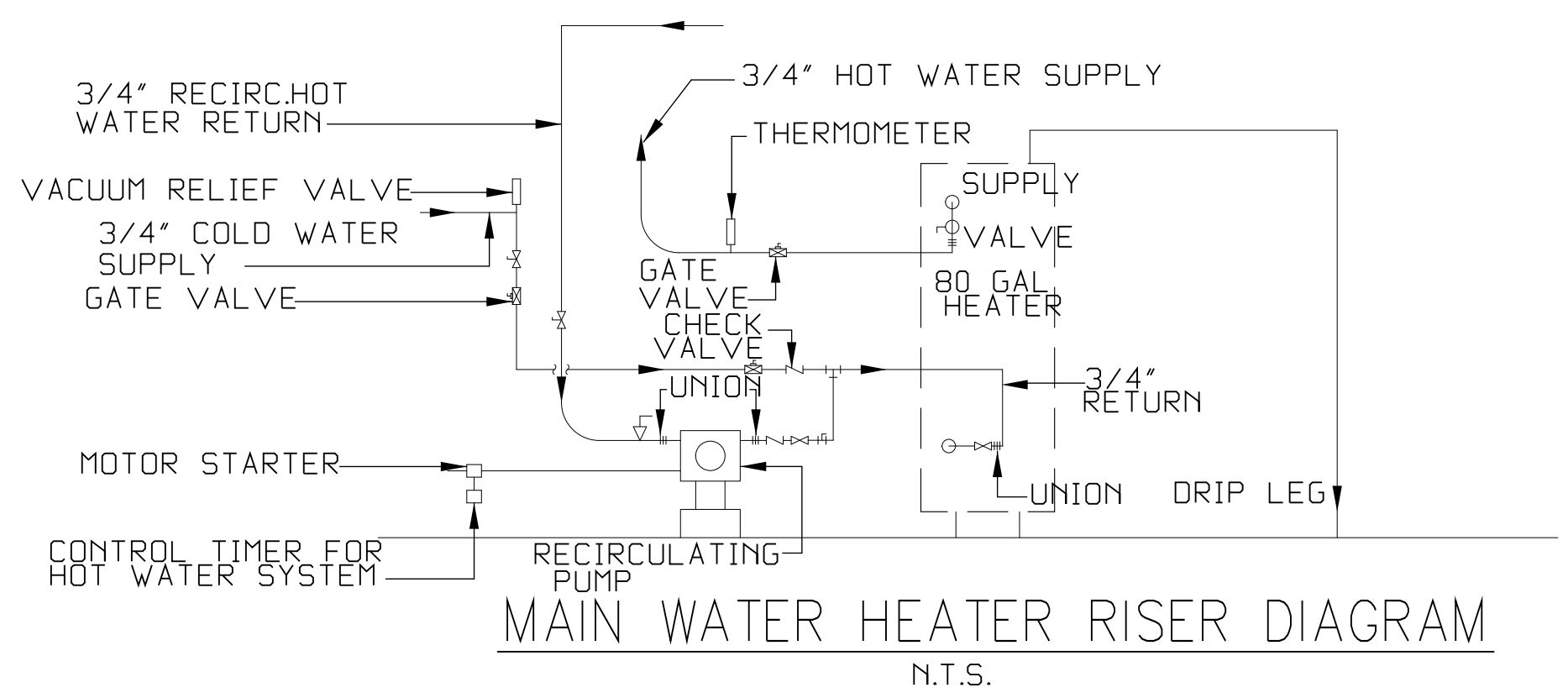
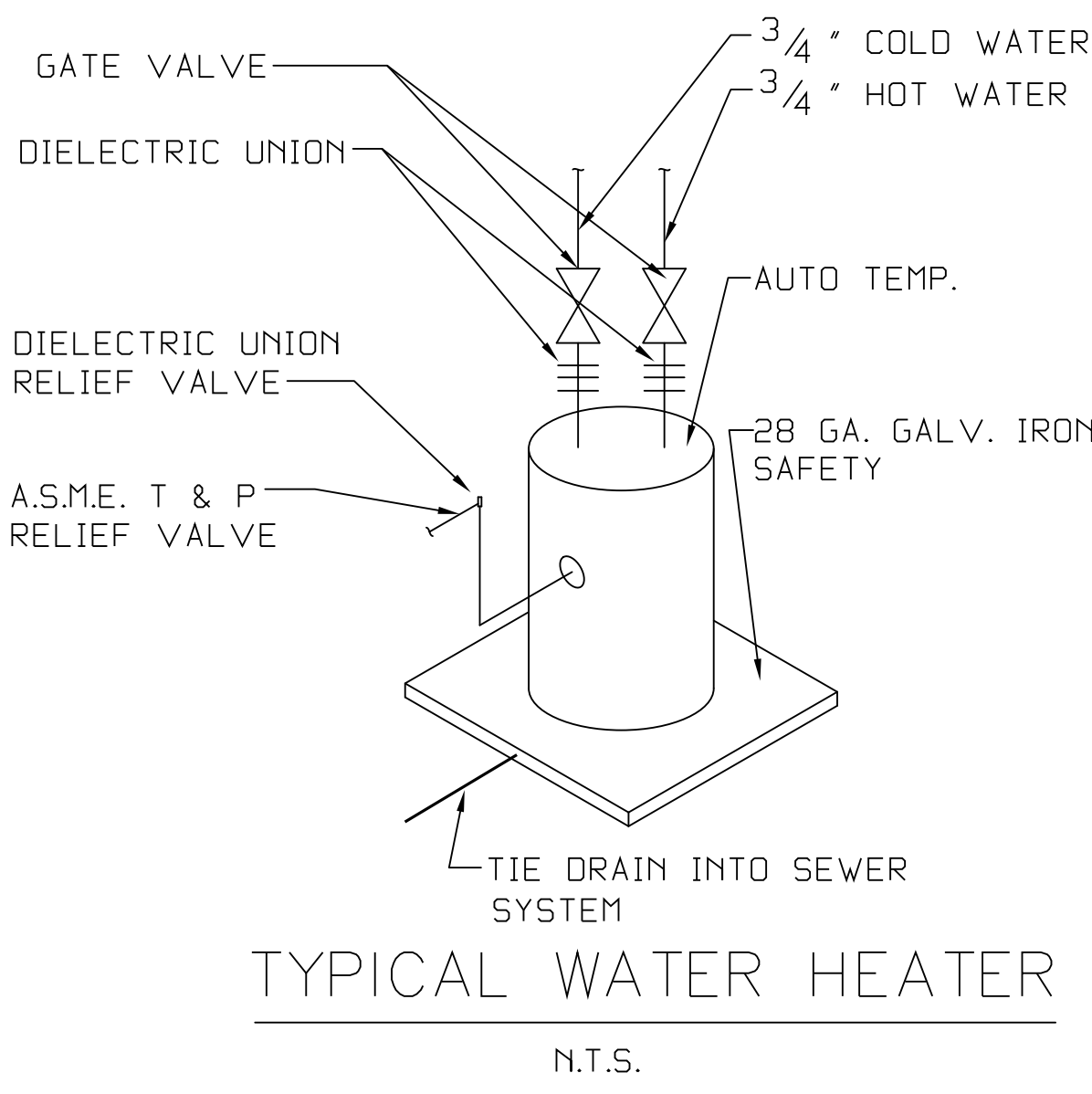
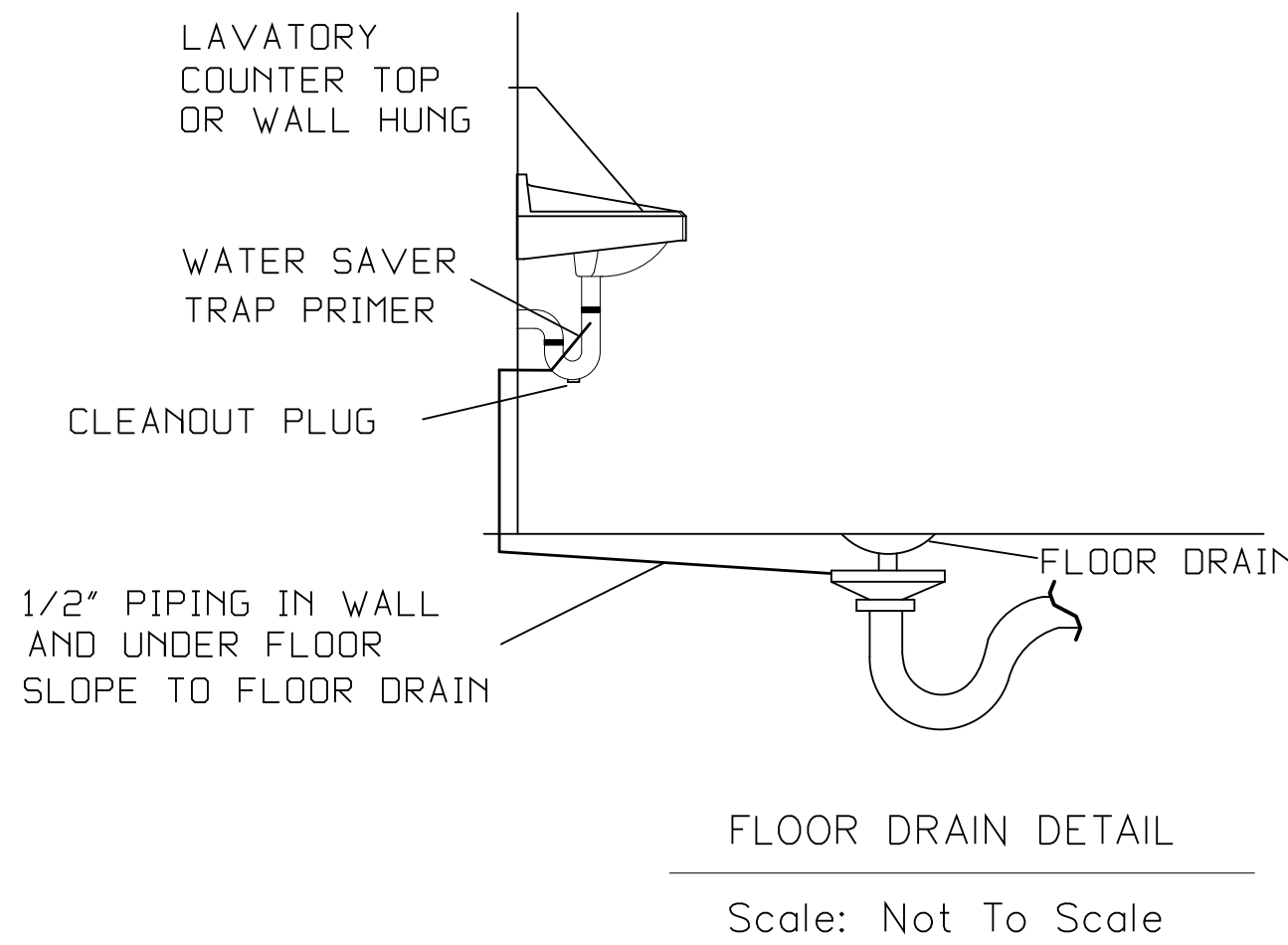
P-2



NOTE: WATER HEATER TEMPERATURE TO BE SET AT 140° F PROVIDE TEMPERING VALVE (SET @ 110°F) AS SHOWN FOR ALL HAND SINK & SHOWER HOT WATER SUPPLIES.



- NOTES:
- HEAT TRAP IS NOT REQUIRED WHERE MIXING VALVE IS INSTALLED BELOW STORAGE TANK OR WATER HEATER.
 - SET THE MIXING VALVE TO THE SYSTEM ACCORDING TO MANUFACTURER'S INSTRUCTIONS.



GENERAL NOTES:

- PLUMBING CONTRACTOR IS TO FURNISH AND INSTALL ALL FIXTURES COMPLETE AS LISTED IN "PLUMBING FIXTURE SCHEDULE" AND THE WOODHOUSE SPECIFICATION. PROVIDE ALL LABOR, MATERIAL AND EQUIPMENT FOR A COMPLETE OPERATING SYSTEM. THE SYSTEM SHALL INCLUDE RECIRCULATING HOT AND COLD WATER PIPING, SEWER AND VENT PIPING, INSULATION, WATER HEATER, HANGERS, VALVES, SUPPORTS WITHOUT ANY RESTRICTIONS TO VOLUME.
- ALL HANDICAP PLUMBING FIXTURES SHALL BE INSTALLED TO COMPLY WITH STATE AND LOCAL CODES. P.C. SHALL FURNISH AND INSTALL CODE COMPLIANT TRAP WRAP ON ALL EXPOSED WATER & WASTE LINES FOR ALL HANDICAP ACCESSIBLE LAVATORIES.
- CONTRACTOR IS TO FIELD VERIFY ALL EXISTING UTILITY LOCATIONS, ELEVATIONS AND SIZES PRIOR TO COMMENCING ANY WORK. PLUMBER TO VERIFY SLAB CONDITIONS (POST TENSION OR CONVENTIONAL) BEFORE COMMENCING WORK. WHERE A RENOVATION IS TO OCCUR, THE PLUMBING CONTRACTOR SHALL VISIT THE SITE TO DETERMINE THE EXTENT OF DEMOLITION REQUIRED, PRIOR TO SUBMITTING BID.
- PLUMBING CONTRACTOR SHALL PROVIDE AS-BUILT DRAWINGS TO THE GENERAL CONTRACTOR PRIOR TO FINAL PAYMENT.
- ALL WORK SHALL BE INSTALLED TO COMPLY WITH LOCAL AND STATE PLUMBING CODE REQUIREMENTS, AND PER LOCAL HEALTH DEPARTMENT REQUIREMENTS.
- THE HOT WATER PRESSURE RELIEF MUST BE CONNECTED EITHER INDIRECTLY TO THE SANITARY SEWER OR DIRECTLY OUTSIDE.
- TEST ALL PIPING AT REQUIRED PRESSURE.
- ALL PLUMBING SHALL BE CLOSELY COORDINATED WITH STRUCTURAL SYSTEM, MECHANICAL SYSTEM AND ELECTRICAL TO INSURE NO TRADES WILL CONFLICT WITH EACH OTHER.
- DO NOT SCALE DRAWINGS. SEE ARCHITECTURAL DRAWINGS FOR EXACT LOCATIONS OF DOORS, WINDOWS, WALLS, FIXTURES, ETC.
- ALL WATER MAINS AND PIPING NOT SHOWN FOR CLARITY, ALL LOCATIONS SHALL BE FIELD VERIFIED.
- ALL ELECTRICAL, MECHANICAL & PLUMBING PENETRATING FIRE PARTITIONS SHALL BE FIRE CAULKED. (PENETRATIONS THROUGH RATED CONSTRUCTION SHALL BE SEALED WITH A MATERIAL CAPABLE OF PREVENTING THE PASSAGE OF FLAMES AND HOT GASES WHEN TESTED IN ACCORDANCE WITH ASTM-E814.)

WASTE AND VENT PIPING:

- PLUMBING CONTRACTOR SHALL USE SERVICE WEIGHT CAST IRON PIPE WITH BELL AND SPIGOT ENDS AND ONE PIECE NEOPRENE INSERT TYPE GASKET. USE PVC SCHEDULE 40 OR ABD DWV PIPES AND FITTINGS WHERE PERMITTED BY CODE. ALL PIPING ABOVE GRADE MAY HAVE HUBLESS FITTINGS. PLASTIC PIPING SHALL NOT BE USED IN RETURN AIR PLENUM. COORDINATE THIS REQUIREMENT WITH HVAC CONTRACTOR PRIOR TO INSTALLATION.
- CONTRACTOR SHALL FIELD VERIFY INVERT ELEVATIONS OF ALL NEW AND EXISTING SANITARY SEWERS PRIOR TO ROUGH-IN.
- NEW SEWERAGE LINES 3-INCH AND SMALLER SHALL BE SLOPED 1/4" PER FOOT AND LINES 4-INCH AND LARGER SHALL BE SLOPED 1/8" PER FOOT.
- ELEVATION OF ALL FLOOR DRAINS SHALL BE HELD 1/2" BELOW FINISH FLOOR TILE.
- ALL CLEANOUTS SHALL BE INSTALLED FLUSH WITH FINISHED GRADE/FINISHED FLOORS.
- HOLD ALL PLUMBING VENTS A MINIMUM OF 10'-0" FROM OUTSIDE AIR INTAKES. WHERE STATE OR LOCAL CODES REQUIRE MORE SEPARATION, P.C. SHALL OFFSET TO MEET THE MORE STRINGENT CODE ON HVAC EQUIPMENT. COORDINATE LOCATION WITH M.C.

WATER PIPING:

- POTABLE WATER PIPING AND FITTINGS ABOVE GRADE SHALL BE ASTM B88 COPPER WATERTUBE, TYPE "L". HARD DRAWN WITH COPPER PRESSURE TYPE FITTINGS, ANSI B16.22. THE JOINTS SHALL BE SOLDERED TYPE USING ASTM B32, ALLOY GADE 95A (95-5) SOLDER. DOMESTIC WATER PIPING BELOW GRADE SHALL BE TYPE "M" SOFT TEMPERED COPPER.
- INSTALL 1" FOAM RUBBER INSULATION ON ALL HOT AND COLD WATER PIPING BELOW AND ABOVE GRADE. ALL JOINTS IN INSULATION ARE TO BE TAPED.
- ALL DOMESTIC WATER PIPING SHALL BE DISINFECTED PRIOR TO USE BY BUILDING OCCUPANT. PLUMBING CONTRACTOR SHALL DISINFECT PER REQUIREMENTS OF LOCAL HEALTH DEPT., STATE/LOCAL PLUMBING CODE.
- ALL PLUMBING HOSE BIBBS OR VALVES WITH THREADED CONNECTIONS SHALL BE PROVIDED WITH VACUUM BREAKERS AND APPROVED MEANS OF BACK-FLOW PREVENTION AS REQUIRED BY STATE AND LOCAL CODES.
- PROVIDE SHUT-OFF VALVES ON ALL EQUIPMENT AND STOP COCKS IN HOT AND COLD WATER PIPING FIXTURES.
- PLUMBING CONTRACTOR SHALL PROVIDE DIELECTRIC UNIONS AT ALL PIPING CONNECTIONS WHERE DISSIMILAR PIPING IS JOINED.
- ALL HOT AND COLD WATER, WASTE, AND VENT PIPING TO BE SUPPORTED PER LOCAL PLUMBING CODE.
- PROVIDE TEMPERED HOT WATER DEVICES, SET TO 110° F.
- PROVIDE AND INSTALL A 1/8 HP CIRCULATING PUMP WITH TIMER FOR THE HOT WATER SYSTEM.

DAMMON ENGINEERING, INC.
Architects & Engineers

ADMINISTRATIVE: CYN DAMMON@dammon.com
PHONE: 985-649-5332
FAX: 985-641-5950

CHIEF ENGINEER: BRADY DANNON, P.E.
CHIEF ARCHITECT: KEVIN KIRCHEN
554 OLD SPANISH TRAIL
SUDDLE, LA 70458

WOODHOUSE SPA
THE HIGH GROVES APARTMENTS
BATON ROUGE, LA

#	DESCRIPTION	DATE

NOTES & RISER DIAGRAMS

