

**BUILDING CODE INFORMATION**

**BUILDING CODE**  
 IBC (INTERNATIONAL BUILDING CODE) 2009

**OCCUPANCY TYPE OF GROUP(S) (IBC 2009 CHAPTER 3):**  
 MERCHANTILE  
 BUSINESS

**CONSTRUCTION TYPE(S):**  
 V-A 4,811 S.F.

**MAXIMUM AREA (S.F.):**  
 MERCHANTILE 573 S.F.  
 BUSINESS 4,238 S.F.

**REQUIRED SEPARATION OF OCCUPANCIES (TABLE 508.2.5):**  
 BM NR

**MAXIMUM AREA OF EXTERIOR WALL OPENINGS:**  
 N/A

**OCCUPANT LOAD CALCULATIONS BY OCCUPANCY:**  
 MERCHANTILE 60 S.F./OCCUPANT = 10  
 BUSINESS 100 S.F./OCCUPANT = 43  
 TOTAL = 53

**EXIT REQUIREMENTS:**  
 FIRST FLOOR - 2 EXITS

**MAXIMUM EXIT ACCESS TRAVEL DISTANCE (TABLE 1016.2):**  
 B - 300' M - 250'

**MINIMUM CORRIDOR WIDTH (SECTION 1018.1 # SECTION 1005.1):**  
 44"

**MAXIMUM DEAD END CORRIDOR (SECTION 1018.4):**  
 50'

**MAXIMUM COMMON PATH OF TRAVEL (1014.3):**  
 B - 100' M - 75'

**FIRE RESISTANCE RATING REQUIREMENTS FOR BLDG. ELEMENTS: (TBL 601)**  
 STRUCTURAL FRAME = 1 HRS.  
 BEARING WALLS (INTERIOR AND EXTERIOR) = 1 HRS.  
 NON-BEARING INTERIOR WALLS = 0 HRS.  
 FLOOR CONSTRUCTION = 1 HRS.  
 ROOF CONSTRUCTION = 1 HRS.

**LIFE-SAFETY INFORMATION**

**LIFE SAFETY CODE:**  
 NFPA 101 LIFE SAFETY CODE 2009

**OCCUPANCY:**  
 MERCHANTILE CHAPTER 26  
 BUSINESS CHAPTER 38

**REQUIRED SEPARATION:**  
 N/A

**CLASSIFICATION OF HAZARD OF CONTENTS:**  
 ORDINARY

**CONSTRUCTION TYPE(S) - (CHAPTER 8, TABLE A.8.2.1.2)**  
 V-A  
 SPRINKLERED

**AREA CALCULATIONS BY OCCUPANCY:**  
 FIRST FLOOR  
 MERCHANTILE 574 S.F.  
 BUSINESS 4,237 S.F.  
 TOTAL 4,811 S.F.

**OCCUPANT LOAD CALCULATIONS BY OCCUPANCY:**  
 MERCHANTILE 574 S.F. = 20  
 BUSINESS 4,237 S.F. = 43  
 TOTAL = 63

**MEANS OF EGRESS:**  
 NUMBER OF EXITS - M-2 B-2  
 MINIMUM EXIT SEPARATION DISTANCE FOR REMOTELY LOCATED EXITS  
 1/3 DIAGONAL 37'-0"

**STAIR WIDTH REQUIREMENTS:** 36"

**EXTINGUISHMENT REQUIREMENTS:**  
 SPRINKLERED (REQUIRED)

**SUBDIVISION OF BUILDING SPACE:**  
 NONE

**DETECTION/ALARM:**  
 NONE

**EXIT REQUIREMENTS:**  
 2 EXITS

**MAXIMUM EXIT ACCESS TRAVEL DISTANCE (TABLE A.7.6):**  
 M - 250' B - 300'

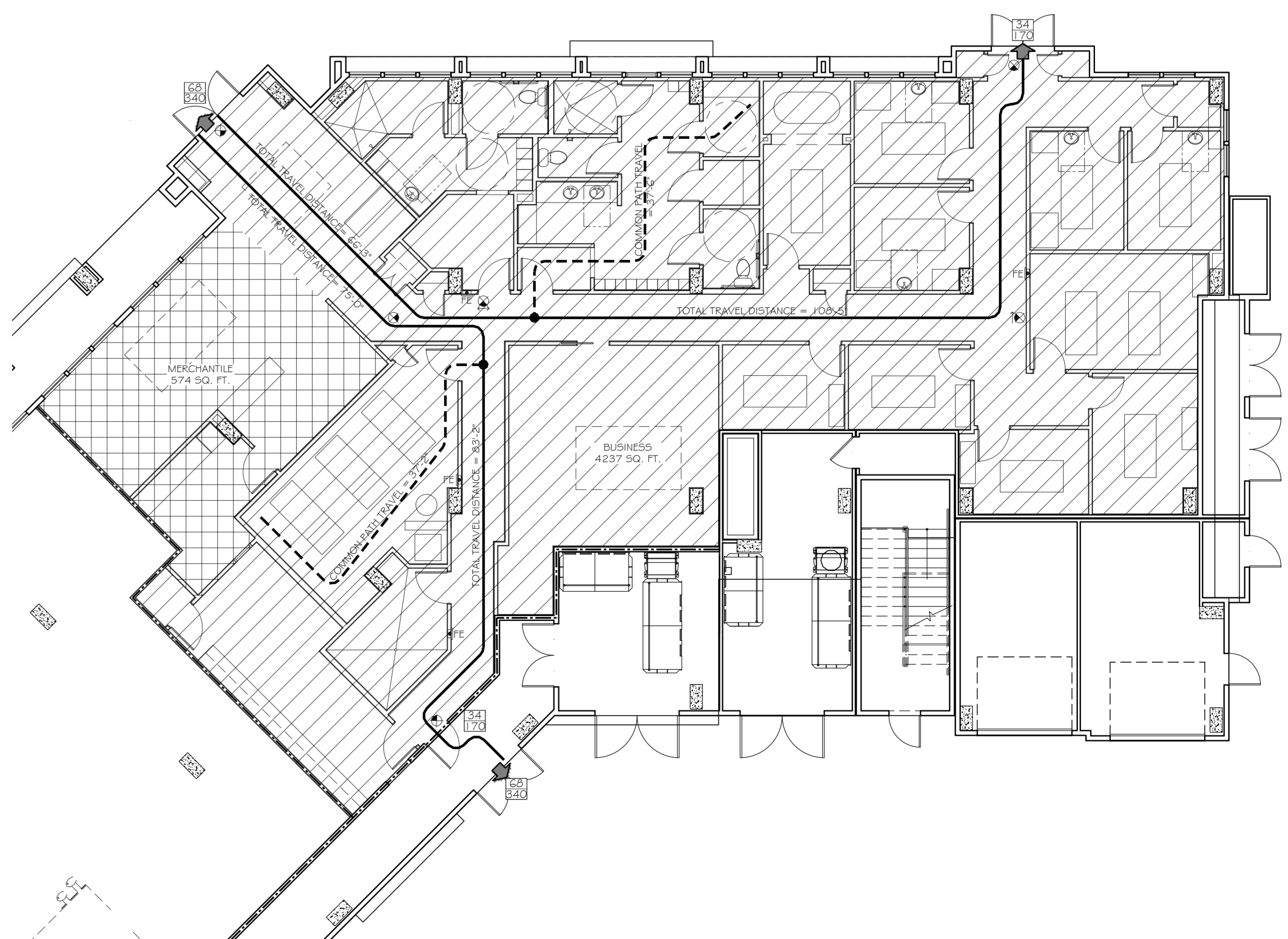
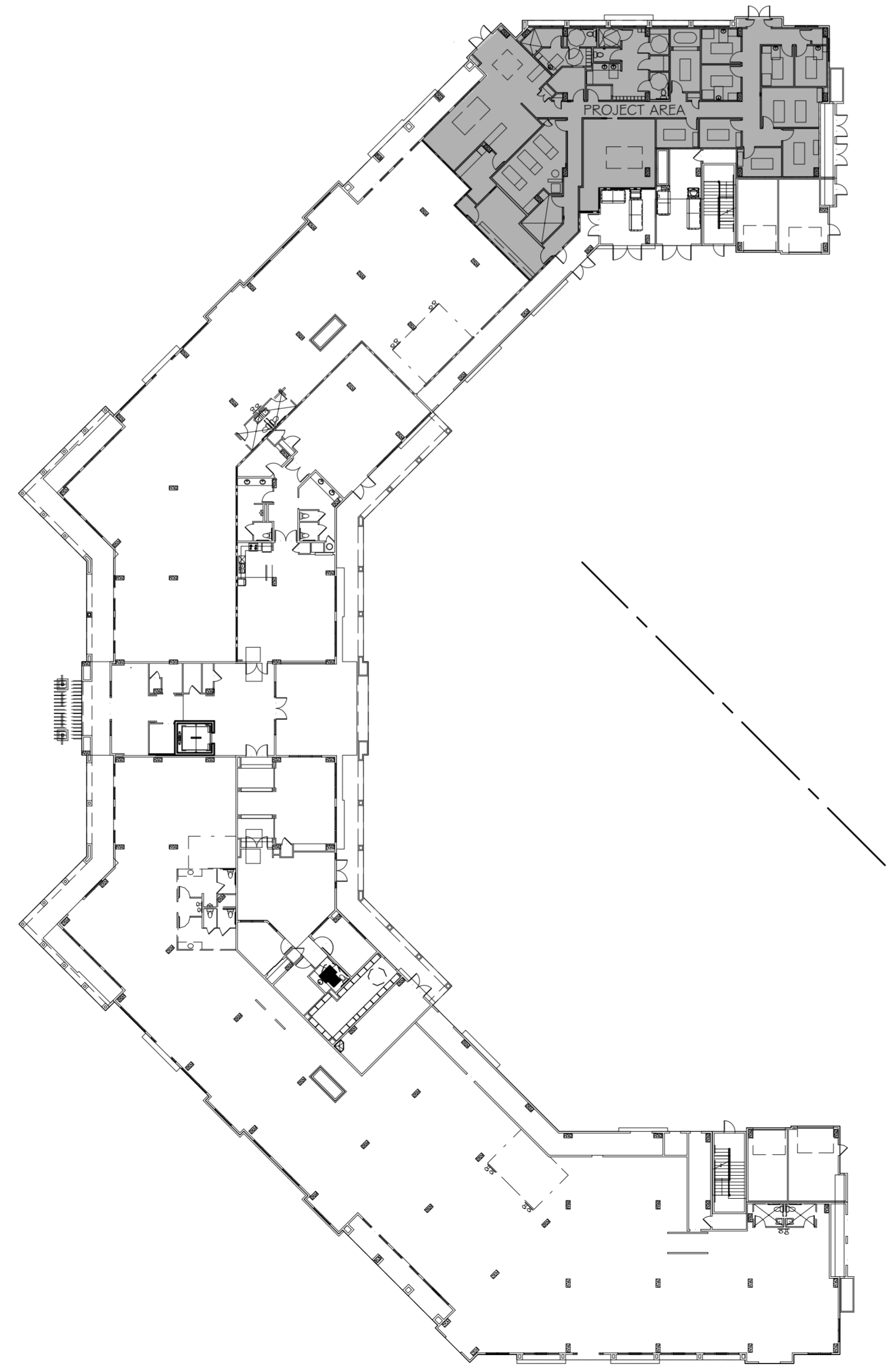
**MINIMUM CORRIDOR WIDTH (SECTION 1018.1 # SECTION 1005.1):**  
 44"

**MAXIMUM DEAD END CORRIDOR (TABLE A.7.6):**  
 50'

**MAXIMUM COMMON PATH OF TRAVEL (TABLE A.7.6):**  
 M - 100' B - 100'

**LEGEND**

- OCCUPANCIES**
- BUSINESS
  - MERCHANTILE
- SYMBOLS**
- EXITS
  - DOOR FIRE RATING (MINUTES)
  - DOOR WIDTH/EGRESS CAPACITY
  - EXIT LIGHT
  - FIRE EXTINGUISHER CABINET
  - FIRE EXTINGUISHER W/ WALL MOUNTED BRACKET
  - ONE-HOUR RATED PARTITION
  - COMMON PATH OF TRAVEL/TRAVEL DISTANCE
  - TRAVEL DISTANCE
  - DECISION POINT



**DAMMON ENGINEERING, INC.**  
*Architects & Engineers*

ADMINISTRATIVE: CON  
 dammon@deloitte.com  
 dammon@deloitte.net  
 PHONE: 985-641-5432  
 FAX: 985-641-5950

CHIEF ENGINEER: DAMON DAMMON, P.E.  
 CHIEF ARCHITECT: KEVIN KIRCHEN  
 554 OLD SPANISH TRAIL  
 SUITE 100, BATON ROUGE, LA 70805

**WOODHOUSE SPA**  
 THE HIGH GROVE APARTMENTS  
 BATON ROUGE, LA

JOB No: 2163 DATE: 5-14-2013  
 DRAWN BY: KJK CHECKED BY: KJK

#	DESCRIPTION	DATE

**LIFE SAFETY PLANS**  
**NOTES & TABULATIONS**

SHEET No: 2 OF 15

**G-2**