

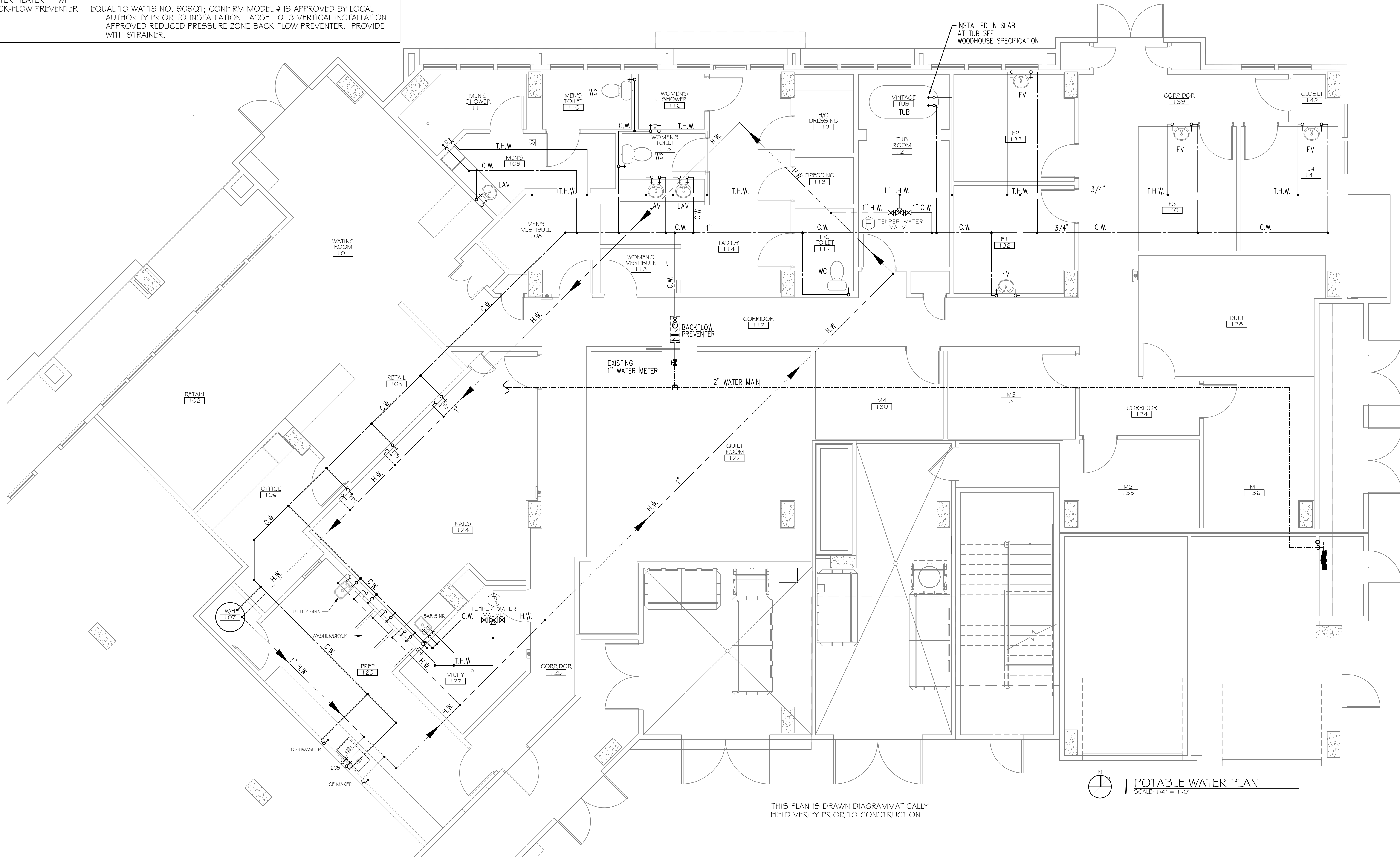
PLUMBING FIXTURE SCHEDULE

FIXTURE	DESCRIPTION
WATER CLOSET - "WC"	SEE WOODHOUSE SPECIFICATION.
LAVATORY - "LAV"	SEE WOODHOUSE SPECIFICATION; DELTA 2555RB-2 I GRB.
FACIAL VANITY - "FV"	SEE WOODHOUSE SPECIFICATION; VANITY SINK FAUCET.
VINATAGE TUB "TUB"	SEE WOODHOUSE SPECIFICATION; RANDOLPH MORRIS RM462ORB, RMN2000RB, RMN144FORB, RMN144IORB, RMN146SORB, RMN2000RB, RMN144FORB, RMN144IORB, RMN146SORB, .
SHOWER	SEE WOODHOUSE SPECIFICATION; DELTA R10000-IP, DELTA RPW124HDF, MONITOR 13 SERIES T13020.
VICHY SHOWER	SEE WOODHOUSE SPECIFICATION.
ECHO FOOT SPA "EFS"	SEE WOODHOUSE SPECIFICATION; CONTINUUM ECHO FOOT SPA. FOLLOW MANUFACTURER'S PLACEMENT OF HOT AND COLD WATER.
BAR SINK	SEE WOODHOUSE SPECIFICATION; 2190 SERIES.
TWO COMP SINK "2CS"	SEE WOODHOUSE SPECIFICATION; DELTA B241OLF.
DISHWASHER	SEE WOODHOUSE SPECIFICATION; FRIGIDAIR 24" BUILT-IN DISHWASHER.
ICE MAKER	SEE WOODHOUSE SPECIFICATION; WHIRLPOOL GOLD 15" ICE MAKER.
UTILITY SINK - "US"	SEE WOODHOUSE SPECIFICATION; DELTA B241OLF.
WATER HEATER - "WH"	EQUAL TO WATTS NO. 909QT; CONFIRM MODEL # IS APPROVED BY LOCAL AUTHORITY PRIOR TO INSTALLATION. ASSE 1013 VERTICAL INSTALLATION APPROVED REDUCED PRESSURE ZONE BACK-FLOW PREVENTER. PROVIDE WITH STRAINER.
BACK-FLOW PREVENTER	

C.W. - COLD WATER
H.W. - HOT WATER
T.W.H. - TEMPERED HOT WATER

PLUMBING SITE NOTES:

- IT IS THE RESPONSIBILITY OF THIS CONTRACTOR TO FIELD VERIFY ALL SITE CONDITIONS PRIOR TO STARTING ANY PHASE OF CONSTRUCTION. ANY CHANGES OR COST NOT SHOWN ON THESE DRAWINGS SHALL BE BROUGHT TO THE ATTENTION OF THE ARCHITECT, ENGINEER.
- ALL EXISTING UTILITIES SHOWN ON THIS PLAN ARE ASSUMED TO BE CORRECT. IT IS THE RESPONSIBILITY OF THIS CONTRACTOR TO PROPERLY VERIFY ALL UNDERGROUND UTILITIES.
- KEEP ALL CUTTING AND PATCHING TO A MINIMUM.
- IT IS RECOMMENDED THAT THE SUBCONTRACTOR ARRANGE A PRE-JOB CONFERENCE WITH THE CONSTRUCTION SUPERVISOR FOR REVIEW & CLARIFICATION PRIOR TO STARTING ANY WORK.



POTABLE WATER PLAN
SCALE: 1/4" = 1'-0"

THIS PLAN IS DRAWN DIAGRAMMATICALLY
FIELD VERIFY PRIOR TO CONSTRUCTION

DAMMON
ENGINEERING, INC.
Architects & Engineers

Administrative: 504-641-1990
dammone@dammon.net
554 Old Spanish Trail
Suldel, LA 70458

Project: 504-641-1990
dammone@dammon.net
554 Old Spanish Trail
Suldel, LA 70458

WOODHOUSE SPA
THE HIGH GROVES APARTMENTS
BATON ROUGE, LA

JOB No: 2163 DATE: 5/14/2013 CHECKED BY: KJK
DRAWN BY: JCT

#	DESCRIPTION	DATE

POTABLE WATER PLAN

SHEET No: 13 OF 15

P-2