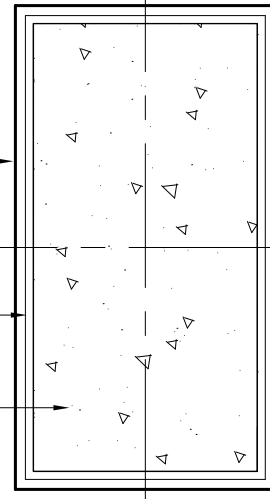


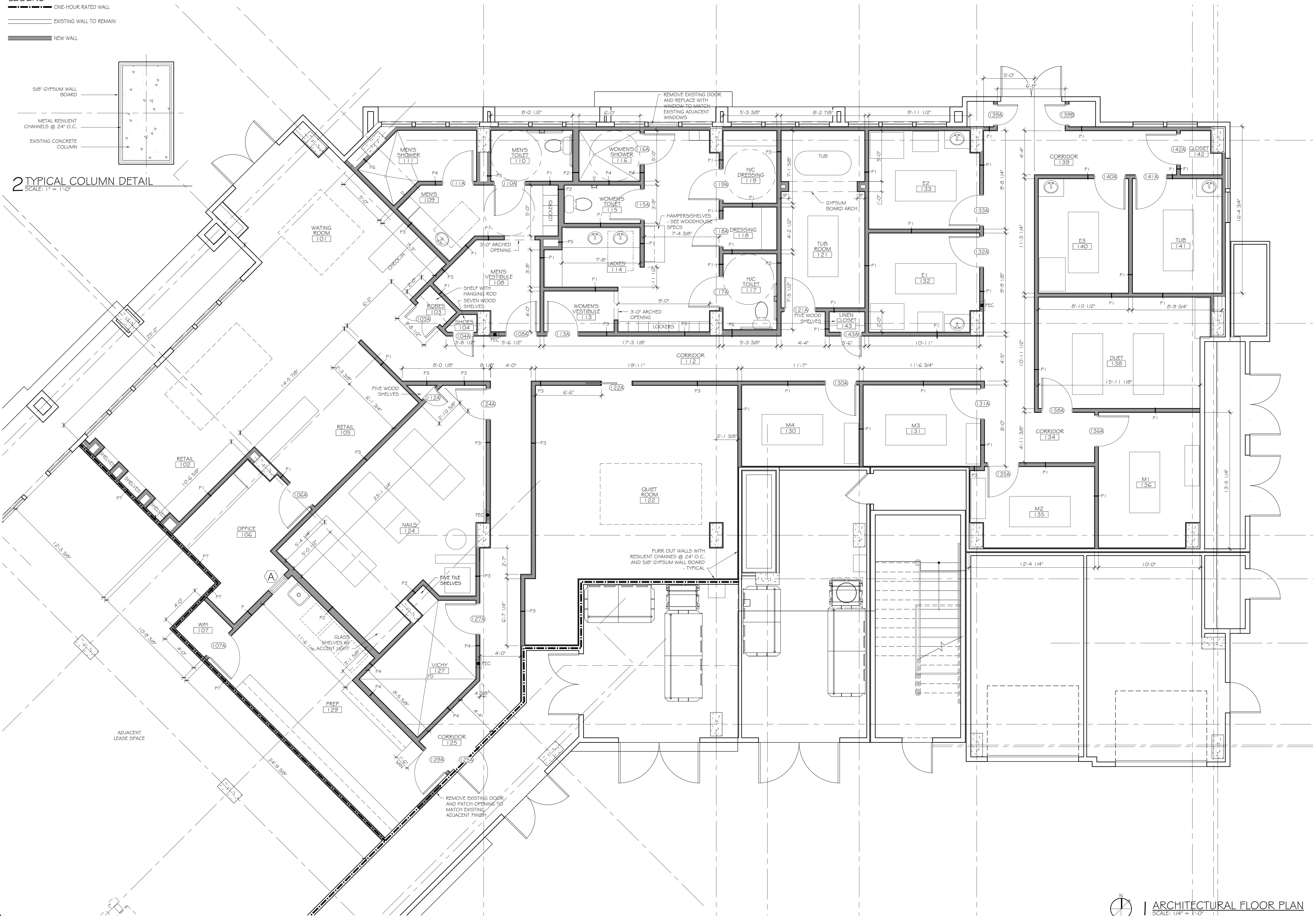
**LEGEND**

- ONE-HOUR RATED WALL
- EXISTING WALL TO REMAIN
- NEW WALL

- 5/8" GYPSUM WALL BOARD
- METAL RESILIENT CHANNELS @ 24" O.C.
- EXISTING CONCRETE COLUMN



**2 TYPICAL COLUMN DETAIL**  
SCALE: 1" = 1'-0"



**DAMMON ENGINEERING, INC.**  
*Architects & Engineers*

ARCHITECT: KEVIN KIRCHEN  
PRINCIPAL: KEVIN KIRCHEN  
554 OLD SPANISH TRAIL  
SUDDLETT, LA 70458  
PHONE: 985-649-5332  
FAX: 985-641-5950

**WOODHOUSE SPA**  
THE HIGH GROVE APARTMENTS  
BATON ROUGE, LA

JOB No: 2163    DATE: 5-14-2013  
DRAWN BY: KJK    CHECKED BY: KJK

#	DESCRIPTION	DATE

ARCH. FLOOR PLAN

SHEET No: 3 OF 15

**A-1**