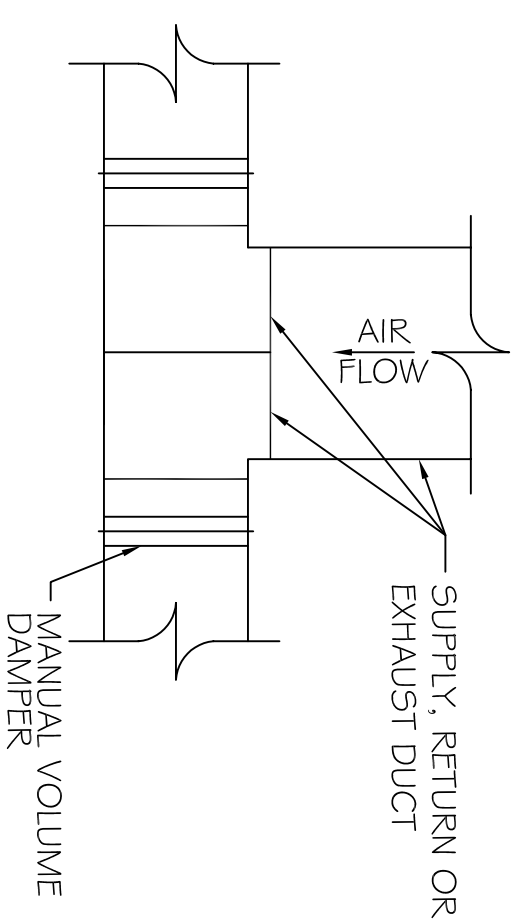
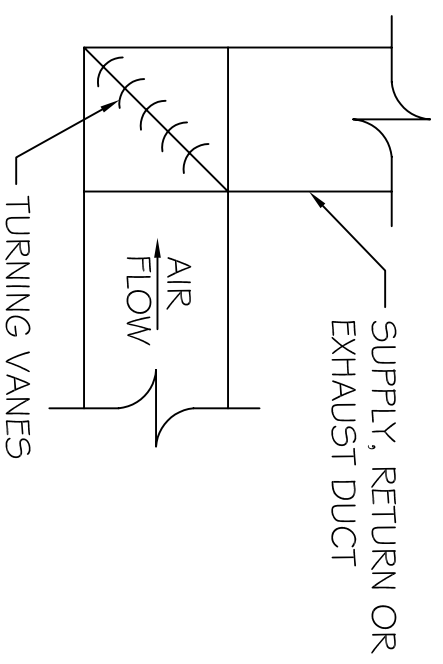


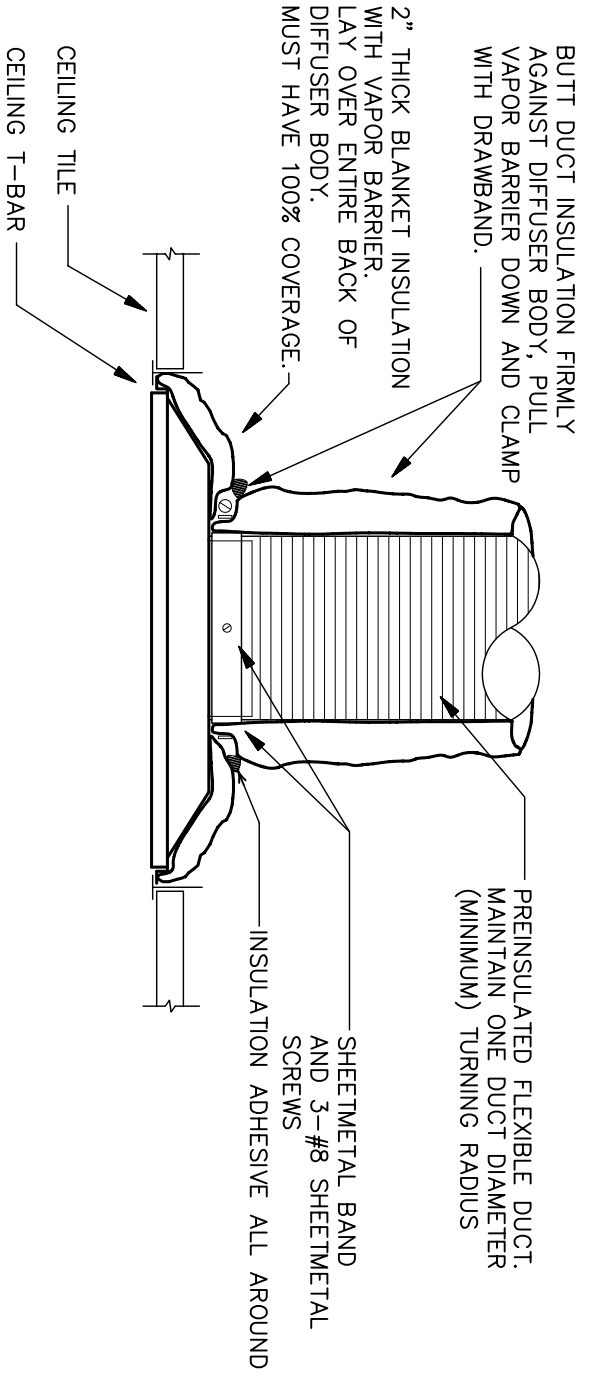
**SUPPLY DUCT TAKE-OFF DETAIL**  
N.T.S.



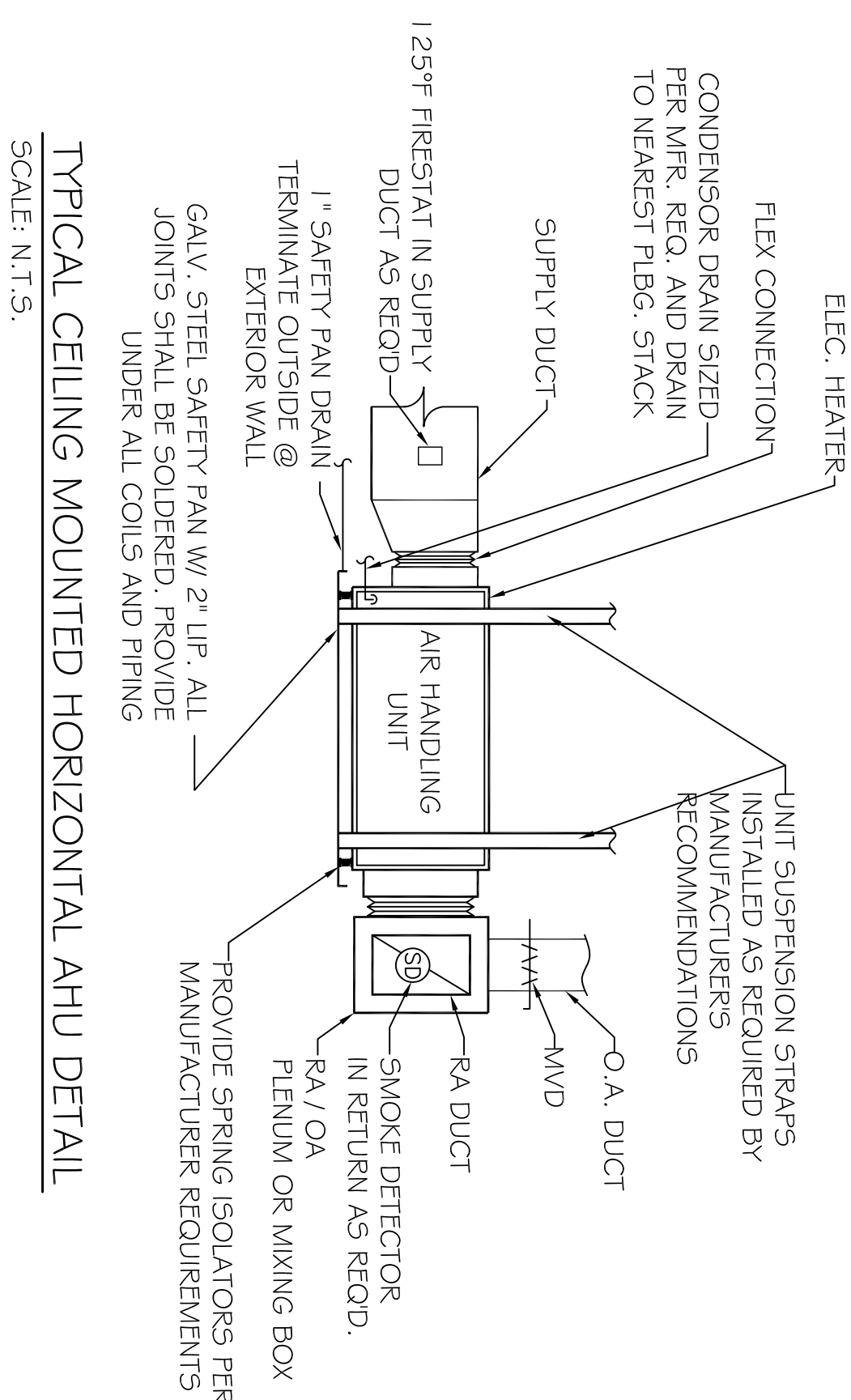
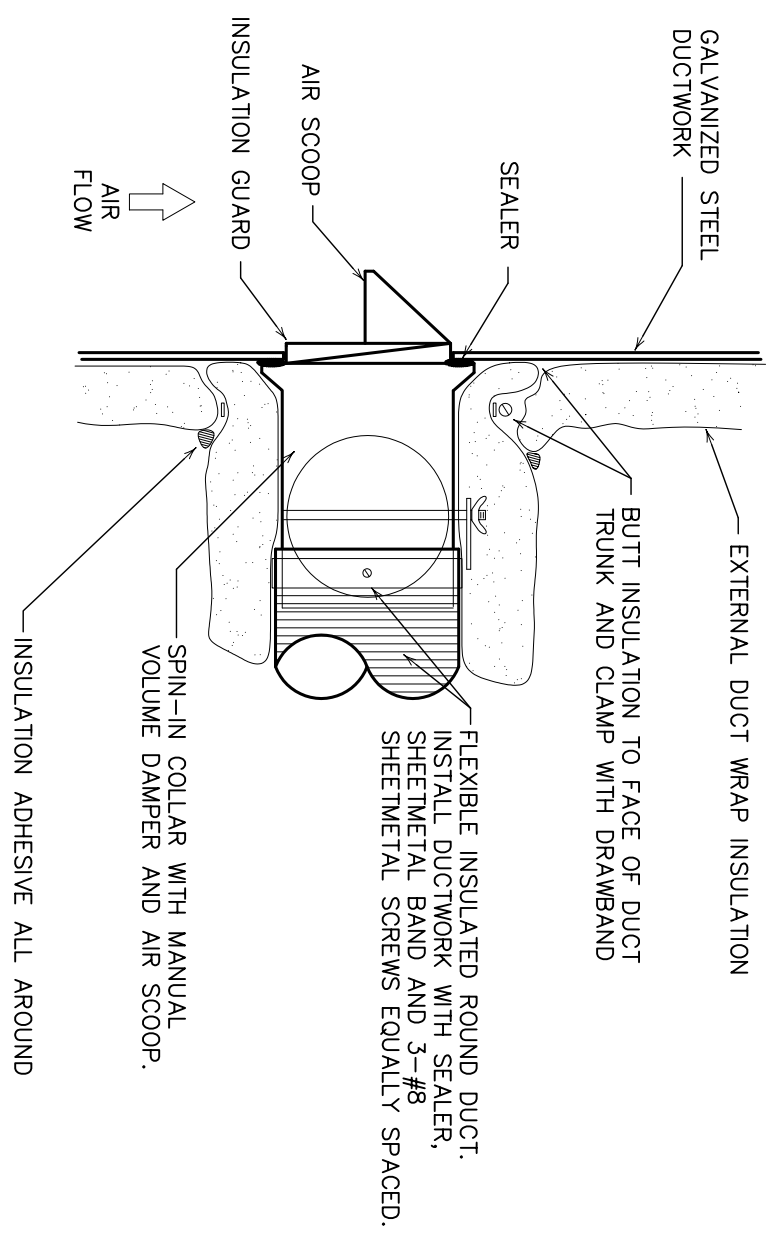
**DUCT SPLITTER DETAIL**  
N.T.S.



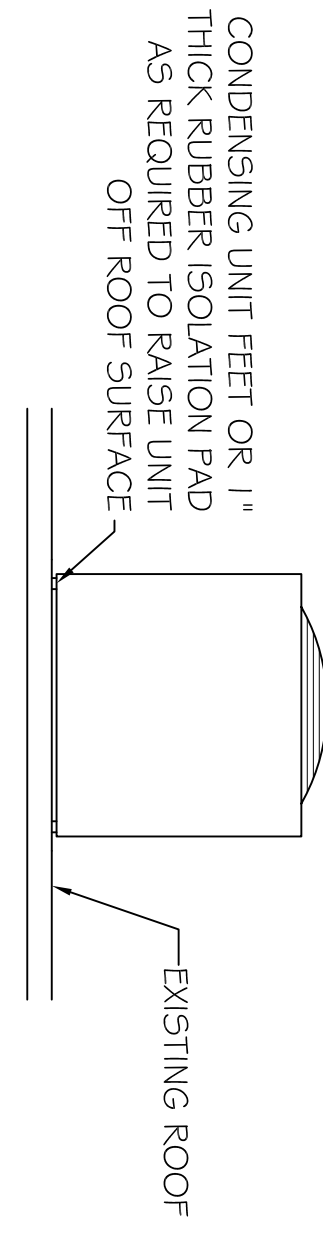
**SQUARE ELBOW DETAIL**  
N.T.S.



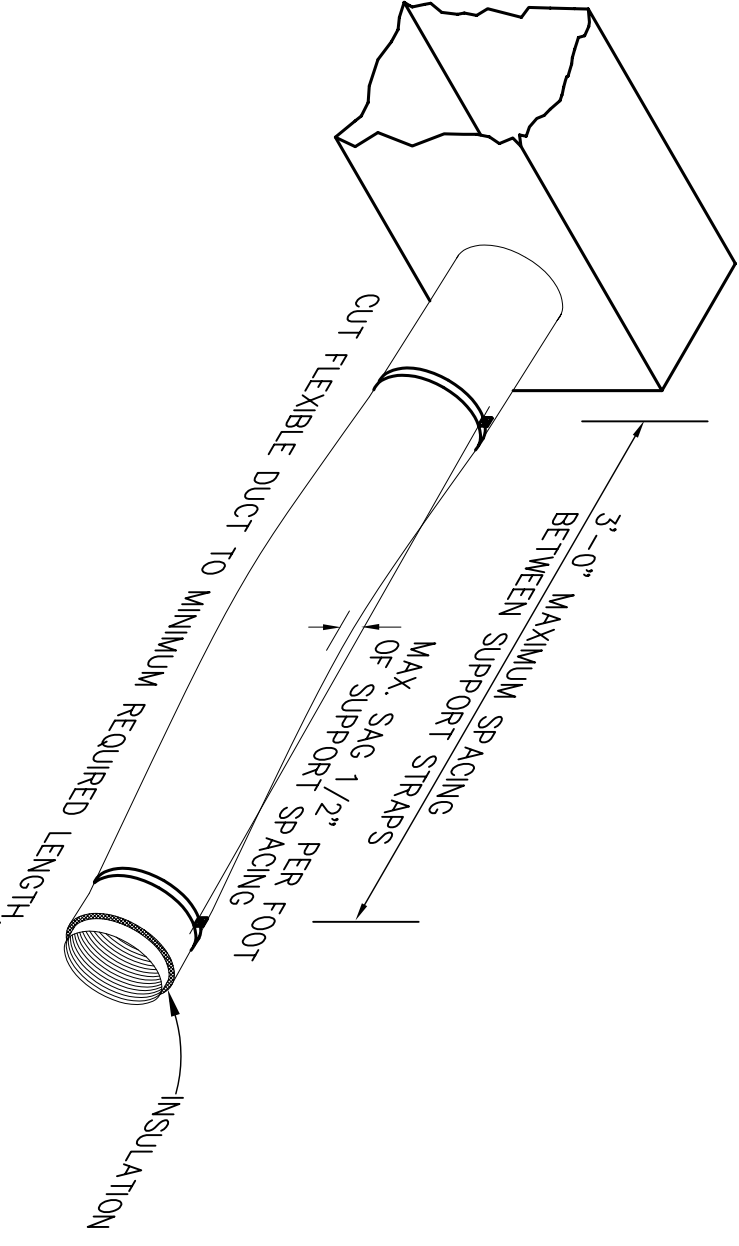
**LAY IN DIFFUSER DETAIL**  
NOT TO SCALE



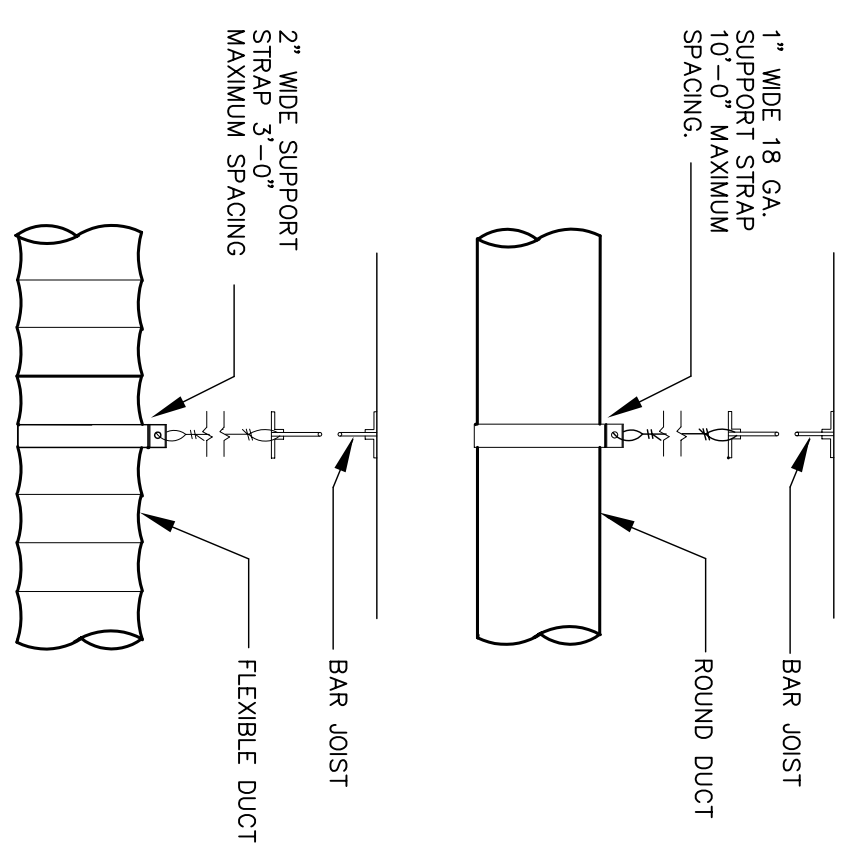
**TYPICAL CEILING MOUNTED HORIZONTAL AHU DETAIL**  
SCALE: N.T.S.



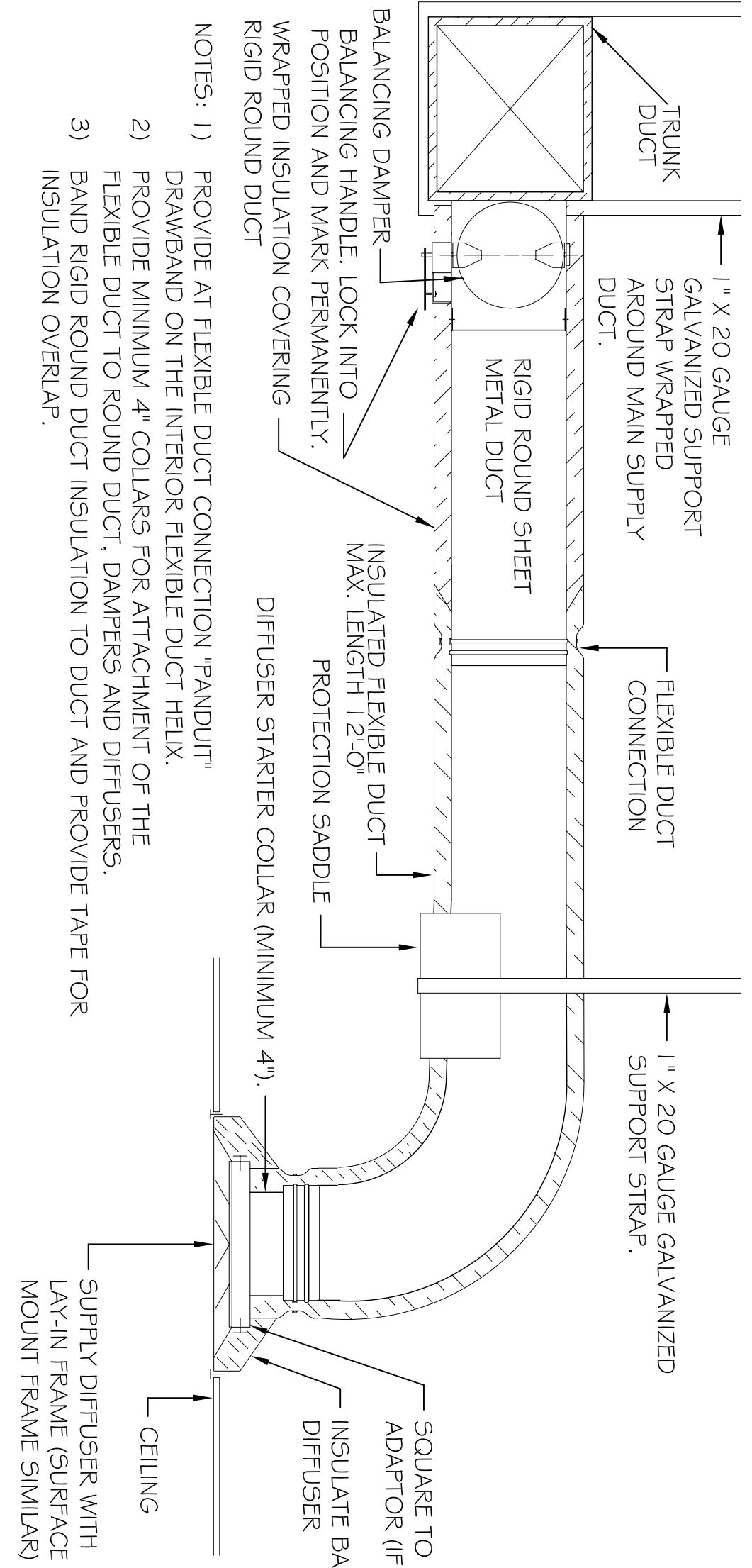
**CONDENSING MOUNTING DETAIL**  
N.T.S.



**FLEX DUCT SUPPORT DETAIL**  
NOT TO SCALE



- HVAC NOTES**
1. CONCEALED DUCTWORK TO BE GALVANIZED SHEET METAL LINED WITH FIBROUS GLASS DUCT LINER. MIN R-6. INSTALLED PER SMACNA STANDARDS.
  2. EXPOSED DUCTWORK TO BE GALVANIZED SHEET METAL LINED WITH FIBROUS GLASS DUCT LINER. MIN R-6. INSTALLED PER SMACNA STANDARDS.
  3. ROUND FLEXIBLE DUCT TO BE U.L. CLASS 1, AIR DUCT MATERIALS.
  4. DUCT SIZES SHOWN ARE CLEAR INSIDE DIMENSIONS.
  5. IN ALL SYSTEMS OVER 2000 CFM AND LESS THAN 1.5 000 CFM, SMOKE DETECTORS SHALL BE INSTALLED IN ACCORDANCE WITH NFPA 72E IN THE RETURN DUCT DOWNSTREAM OF THE AIR HANDLING UNIT AND ALL FILTERS TO AUTOMATICALLY STOP THE FAN.
  6. PROVIDE U.L. LISTED 1 25" F" FIRESTOP IN RETURN AIR OF EACH SYSTEM UNDER 2000 CFM TO SHUT DOWN THE FAN IN THE EVENT OF FIRE.
  7. PROVIDE U.L. RATED FIRE DAMPERS WHERE REQUIRED BY CODE. INCLUDING OUTSIDE AIR INTAKES, FIRE-RATED ASSEMBLIES AND WHERE REQUIRED BY CODE. INCLUDING OUTSIDE AIR INTAKES, CONDENSATE DRAINS TO BE PVC PIPE RUN TO PLUMBERS P-TRAP WITHIN FIVE FEET OF AIR HANDLING UNITS.
  8. ALL AIR HANDLING SYSTEMS TO BE BALANCED TO ASSURE PROPER AIR FLOWS PER PLANS.
  9. ALL THERMOSTATS TO BE AUTOMATIC CHANGEOVER WITH HEAT SWITCH.
  10. EXHAUST FAN EQUAL TO BRAN MODEL NO. 70 CF. SEE WOODHOUSE SPECIFICATIONS. FAN SHALL BE CONTROLLED BY A SWITCH ON THE WALL IN THE SAME LOCATION AS LIGHT SWITCH(S). PROVIDE BACK DRAFT DAMPER.
  11. PROVIDE AND INSTALL WATER PROOF GRILLE VENT IN PROPER ROOF LOCATION FOR PLUMBING FIXTURE EXHAUST.
  12. ALL SUPPLY AIR VENTS SHALL BE EQUIPPED WITH AIR CONTROL DAMPERS.
  13. LOCATE OUTDOOR UNITS AS SHOWN ON ARCH. DWGS.
  14. REFRIGERANT LINES SHALL BE SIZED BY UNIT MANUFACTURER AND INSTALLED ACCORDING TO MANUFACTURER'S INSTRUCTIONS.
  15. FRESH AIR SHALL BE SUPPLIED TO EACH AIR HANDLER THROUGH EXTERIOR WALL DUCT SUPPLIED WITH A CONTROL DAMPER.
  16. INSTALL FIRE DAMPER WHERE S.A. # R.A. DUCTS PENETRATE 1 HOUR RATED CEILINGS.
  17. ALL ELECTRICAL, MECHANICAL, AND PLUMBING PENETRATING FIRE WALLS SHALL BE FIRE CALKED. (PENETRATIONS THROUGH RATED PENETRATING SHALL BE SEALED WITH A MATERIAL CAPABLE OF PREVENTING THE PASSAGE OF FLAMES AND HOT GASES WHEN TESTED IN ACCORDANCE WITH ASTM-E814).
  18. ALL MECHANICAL SYMBOLS ARE DRAWN DIAGRAMMATICALLY. CONTRACTOR TO VERIFY WITH OWNER LOCATIONS OF VENTS, DAMPERS, RESISTERS, ETC.
  19. FLEXIBLE DUCTWORK LENGTH NOT TO EXCEED 12'-0".
  20. REFER TO REFLECTED CEILING PLAN FOR FINAL GRILLE AND DIFFUSER LOCATIONS AND COORDINATE AS REQUIRED.
  21. FINAL LOCATION OF TEMPERATURE CONTROLS TO BE COORDINATED WITH OWNER AT JOB SITE.
  22. PROVIDE AND INSTALL SMOKE DETECTORS AS APPROVED BY LOCAL AHJ'S. PLACE NEAR RA AND SIA OPENINGS OF AHU AND PROVIDE, WITH ACCESS PANEL, WIRING BY ELECTRICAL CONTRACTOR.
  23. FRESH AIR INTAKES ARE REQUIRED TO HAVE MOTORIZED OR GRAVITY DAMPERS TO SHUT OFF WHEN SYSTEM IS NOT RUNNING. ALL THERMOSTATS MUST BE PROGRAMMABLE. SEE SECTIONS 502.4.4 OR 503.2.4.3 OF THE 2009 INTERNATIONAL ENERGY CODE.



**DIFFUSER CONNECTION DETAIL - FLEX DUCT**  
N.T.S.

- NOTES:
- 1) PROVIDE AT FLEXIBLE DUCT CONNECTION "PANDUIT" DRAWBAND ON THE INTERIOR FLEXIBLE DUCT FIELD.
  - 2) PROVIDE MINIMUM 4" COLLARS FOR ATTACHMENT OF THE FLEXIBLE DUCT TO ROUND DUCT, DAMPERS AND DIFFUSERS.
  - 3) BAND RIGID ROUND DUCT INSULATION TO DUCT AND PROVIDE TAPE FOR INSULATION OVERLAP.

<p><b>M-2</b></p> <p>SHEET No: 8 OF 15</p>	<p><b>MECHANICAL DETAILS</b></p>	<p>REVISIONS</p> <table border="1"> <tr> <th>#</th> <th>DESCRIPTION</th> <th>DATE</th> </tr> <tr> <td>1</td> <td>REVISION #1</td> <td>5/23/2013</td> </tr> </table>	#	DESCRIPTION	DATE	1	REVISION #1	5/23/2013	<p><b>WOODHOUSE SPA</b> THE HIGH GROVE APARTMENTS BATON ROUGE, LA</p>	<p>JOB No: 2163      DATE: 5/14/2013</p> <p>DRAWN BY: JTL      CHECKED BY: KJK</p>	<p><b>DAMMON ENGINEERING INC.</b> Architects &amp; Engineers</p> <p>CHIEF ENGINEER: EMMETT DAMMON, P.E. CHIEF ARCHITECT: KEVIN KINCHEN 554 OLD SPANISH TRAIL SLIDE, LA 70456</p>	<p>dammonengineering.com dammoneng@bellsouth.net PHONE: 985-649-5632 FAX: 985-641-5950</p>
		#	DESCRIPTION	DATE								
1	REVISION #1	5/23/2013										
<p>The above drawings and specifications, designs and arrangements represent the property of Dammon Engineering, and no part thereof shall be copied, reproduced or otherwise used in connection with any work or project other than the specific project for which they have been prepared and developed without written consent of Dammon Engineering. Your contract with the client of Dammon Engineering shall constitute the entire agreement and specifications shall constitute the entire understanding of acceptance of these instructions.</p>												