

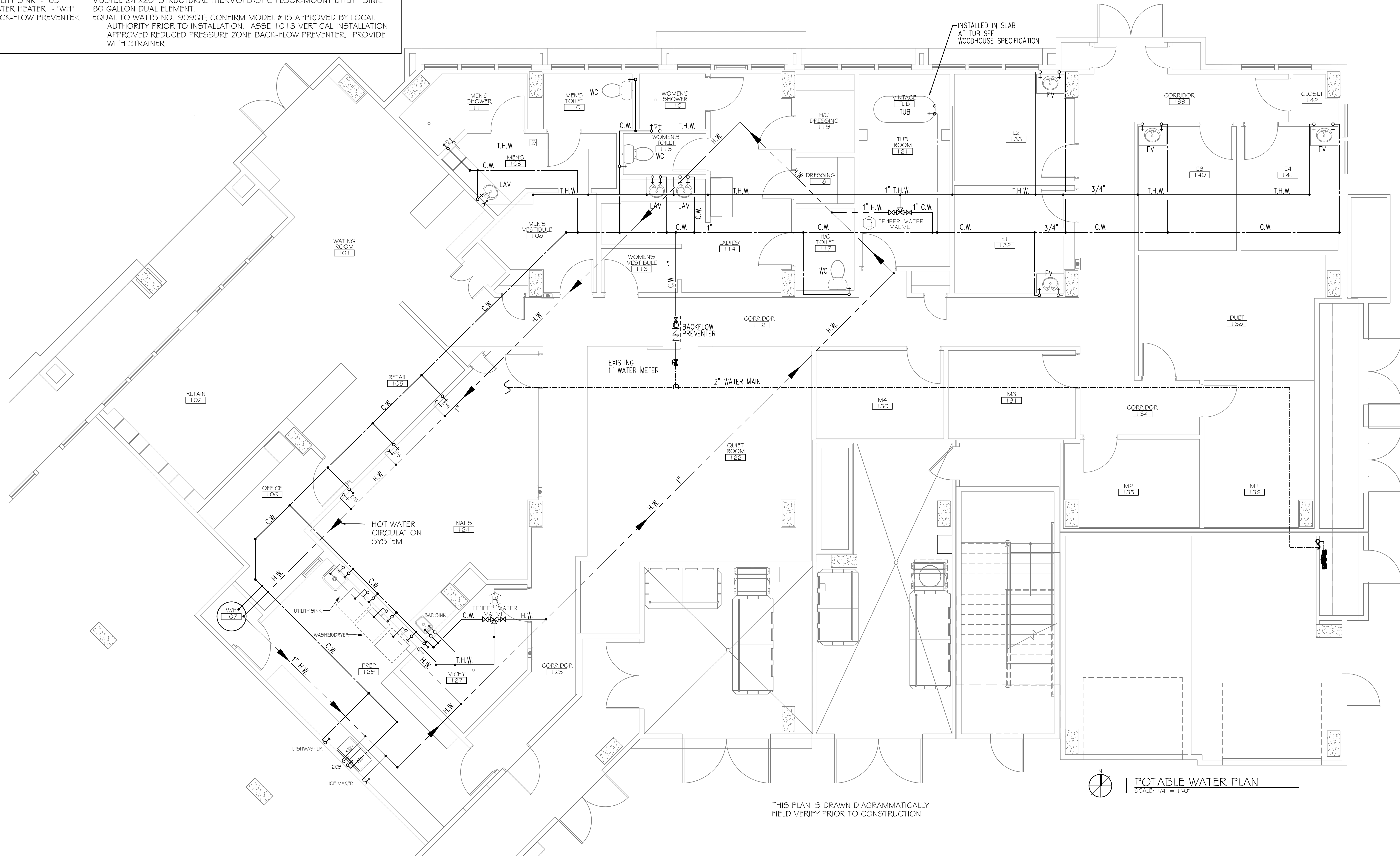
PLUMBING FIXTURE SCHEDULE

FIXTURE	DESCRIPTION
WATER CLOSET - "WC"	SEE WOODHOUSE SPECIFICATION.
LAVATORY - "LAV"	SEE WOODHOUSE SPECIFICATION; DELTA 2555RB-21GRB.
FACIAL VANITY - "FV"	SEE WOODHOUSE SPECIFICATION; VANITY SINK FAUCET.
VINATAGE TUB "TUB"	SEE WOODHOUSE SPECIFICATION; RANDOLPH MORRIS RM462ORB, RMN2000RB, RMN144FORB, RMN144IORB, RMN146SORB, .
SHOWER	SEE WOODHOUSE SPECIFICATION; DELTA R10000-IF, DELTA RPW124HDF, MONITOR 13 SERIES T13020.
VICHY SHOWER	WATER WERKS CASCADE; SWIVELING SHOWER ARM WITH 5 SHOWER HEADS. SEE WOODHOUSE SPECIFICATION.
ECHO FOOT SPA "EFS"	SEE WOODHOUSE SPECIFICATION; CONTINUUM ECHO FOOT SPA. FOLLOW MANUFACTURER'S PLACEMENT OF HOT AND COLD WATER.
BAR SINK	SEE WOODHOUSE SPECIFICATION; 2190 SERIES.
TWO COMP SINK "2CS"	SEE WOODHOUSE SPECIFICATION; DELTA B241OLF.
DISHWASHER	SEE WOODHOUSE SPECIFICATION; FRIGIDAIR 24" BUILT-IN DISHWASHER.
ICE MAKER	SEE WOODHOUSE SPECIFICATION; WHIRLPOOL GOLD 15" ICE MAKER.
UTILITY SINK - "US"	MUSTEE 24"X20" STRUCTURAL THERMOPLASTIC FLOOR-MOUNT UTILITY SINK.
WATER HEATER - "WH"	80 GALLON DUAL ELEMENT.
BACK-FLOW PREVENTER	EQUAL TO WATTS NO. 909QT; CONFIRM MODEL # IS APPROVED BY LOCAL AUTHORITY PRIOR TO INSTALLATION. ASSE 1013 VERTICAL INSTALLATION APPROVED REDUCED PRESSURE ZONE BACK-FLOW PREVENTER. PROVIDE WITH STRAINER.

C.W. - COLD WATER
H.W. - HOT WATER
T.W.H. - TEMPERED HOT WATER

PLUMBING SITE NOTES:

- IT IS THE RESPONSIBILITY OF THIS CONTRACTOR TO FIELD VERIFY ALL SITE CONDITIONS PRIOR TO STARTING ANY PHASE OF CONSTRUCTION. ANY CHANGES OR COST NOT SHOWN ON THESE DRAWINGS SHALL BE BROUGHT TO THE ATTENTION OF THE ARCHITECT, ENGINEER.
- ALL EXISTING UTILITIES SHOWN ON THIS PLAN ARE ASSUMED TO BE CORRECT. IT IS THE RESPONSIBILITY OF THIS CONTRACTOR TO PROPERLY VERIFY ALL UNDERGROUND UTILITIES.
- KEEP ALL CUTTING AND PATCHING TO A MINIMUM.
- IT IS RECOMMENDED THAT THE SUBCONTRACTOR ARRANGE A PRE-JOB CONFERENCE WITH THE CONSTRUCTION SUPERVISOR FOR REVIEW & CLARIFICATION PRIOR TO STARTING ANY WORK.



THIS PLAN IS DRAWN DIAGRAMMATICALLY
FIELD VERIFY PRIOR TO CONSTRUCTION

POTABLE WATER PLAN
SCALE: 1/4" = 1'-0"

WOODHOUSE SPA
THE HIGH GROVES APARTMENTS
BATON ROUGE, LA

#	DESCRIPTION	DATE
1	REVISION #1	5/23/2013

REVISIONS	DATE

JOB No: 2163 DATE: 5/14/2013
DRAWN BY: JCT CHECKED BY: KJK

POTABLE WATER PLAN

SHEET No: 13 OF 15

P-2

DAMMON
ENGINEERING, INC.
Architects & Engineers

Administrative: 504-649-5332
dammone@dammon.net
554 OLD SPANISH TRAIL
SUITE 100
SUDDLESS, LA 70458
PHONE: 985-649-5332
FAX: 985-641-5950

CHIEF ENGINEER: BRADY DANNON, P.E.
CHIEF ARCHITECT: KEVIN KIRCHEN