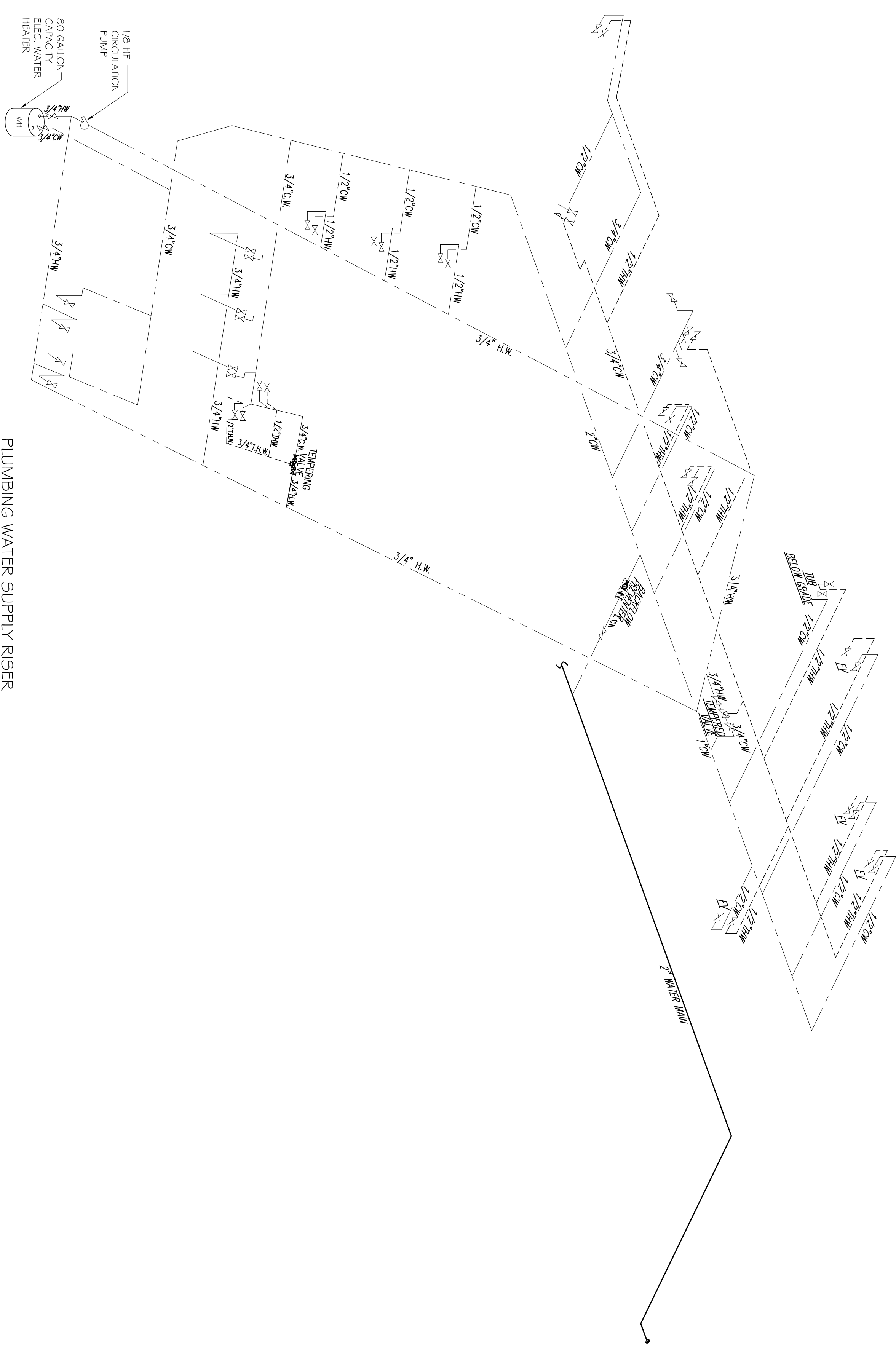
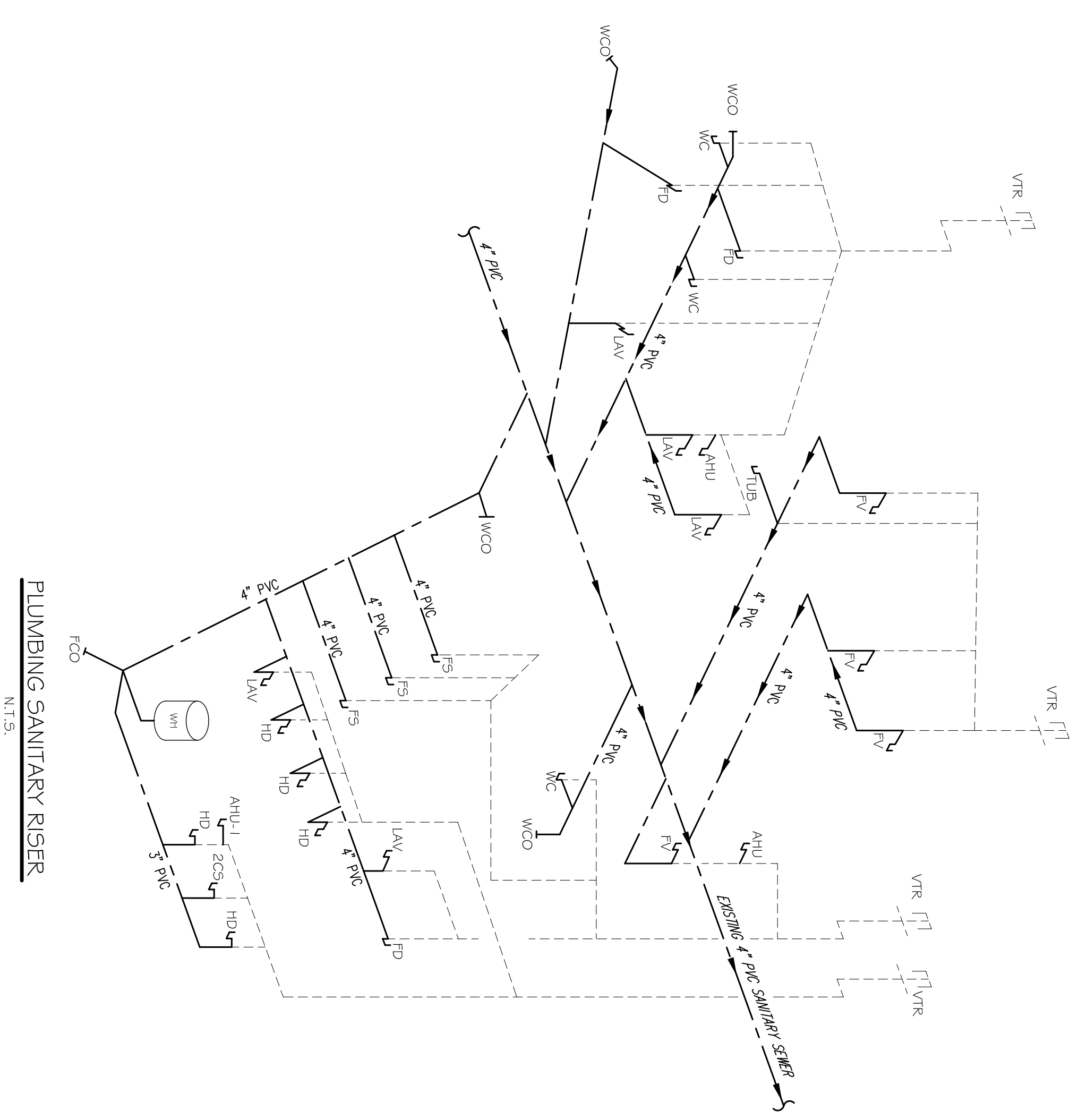


PLUMBING - FIXTURE SCHEDULE	
WATER CLOSET	W.C.
LAVATORY	LAV.
FACIAL VANITY	F.V.
VINTAGE TUB	TUB
ECHO FOOT SPA	FS
TWO COMF. SINK	CS
UTILITY SINK	US
WATER HEATER	WH
FLOOR DRAIN	FD
HUB DRAIN	HD
FLOOR SINK	FS



**PLUMBING WATER SUPPLY RISER**  
N.T.S.



**PLUMBING SANITARY RISER**  
N.T.S.

THIS PLAN IS DRAWN DIAGRAMMATICALLY  
FIELD VERIFY PRIOR TO CONSTRUCTION

REVISIONS		
#	DESCRIPTION	DATE
1	REVISION #1	5/23/2013

**WOODHOUSE SPA**  
THE HIGH GROVES APARTMENTS  
BATON ROUGE, LA

JOB No: 2163      DATE: 5/14/2013  
DRAWN BY: JCT      CHECKED BY: KJK

The above drawings and specifications, design and arrangements represented hereby are and shall remain the property of Dammon Engineering, and no part thereof shall be copied, disclosed to others, used in connection with any work or project other than the specific project for which they have been prepared and developed without written consent of Dammon Engineering. Visual contact with these drawings or specifications shall constitute conclusive evidence of acceptance of these instructions.



**DAMMON**  
ENGINEERING, INC.  
*Architects & Engineers*

CHIEF ENGINEER: EMMETT DAMMON, P.E.  
CHIEF ARCHITECT: KEVIN KINCHEN  
554 OLD SPANISH TRAIL  
SLIDELL, LA 70458

dammonengineering.com  
dammoneng@bellsouth.net  
PHONE: 985-649-5832  
FAX: 985-641-5950

**PLUMBING  
RISER  
DIAGRAMS**

SHEET No: 15 of 15

**P-4**