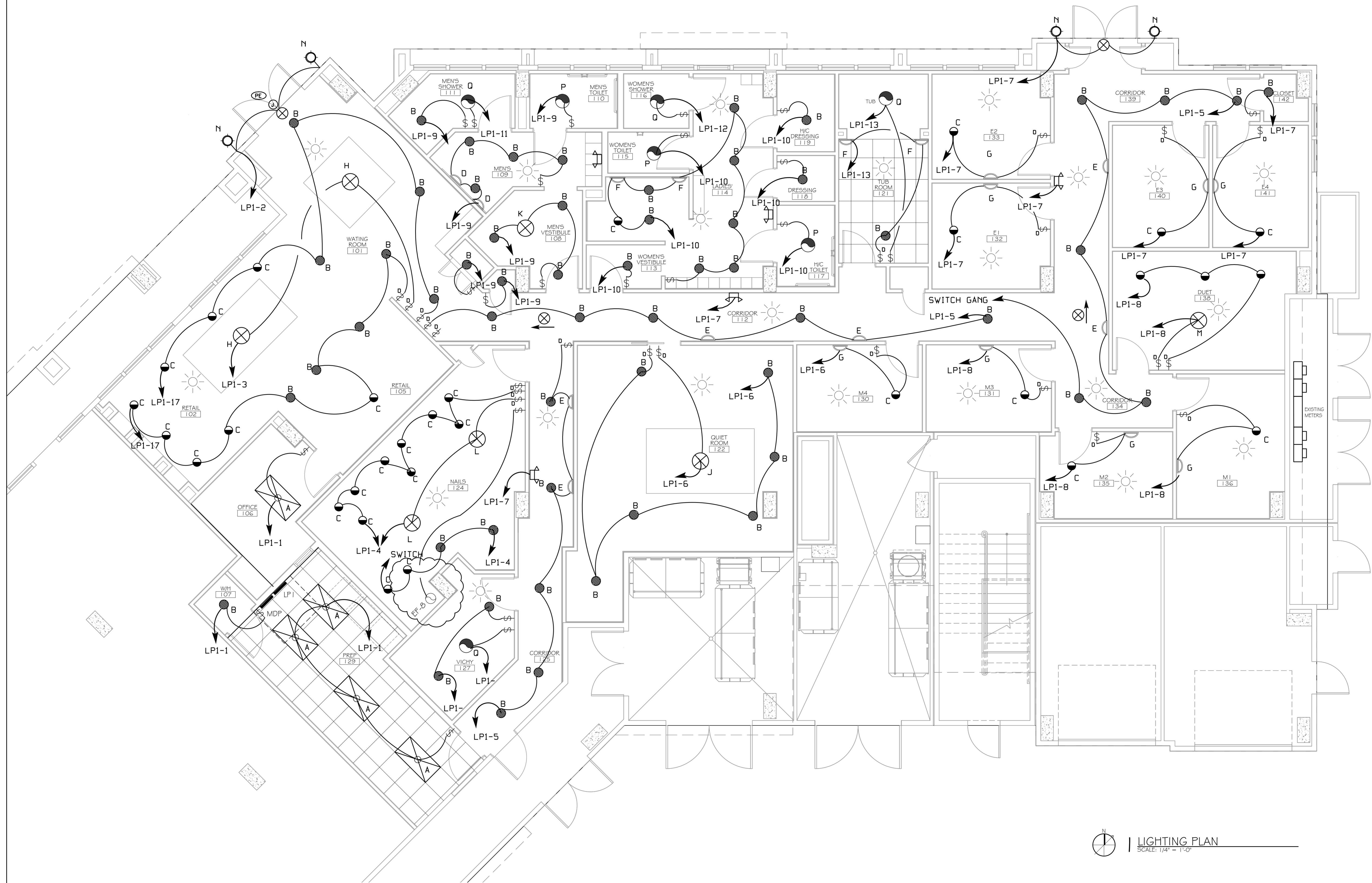


NOTE: ALL LIGHT FIXTURES AND LUMINAIRES ARE TO BE DIMMABLE AND CONNECTED TO A SLIDING DIMMER PACK, EXCEPT: OFFICE, MECHANICAL RM AND CLOSETS.




**LIGHTING PLAN**  
 SCALE: 1/4" = 1'-0"

**DAMMON**  
 ENGINEERING, INC.  
*Architects & Engineers*

dammonengineering.com  
 dammoneng@dammoneng.com  
 PHONE: 985-641-5492  
 FAX: 985-641-9950

CHIEF ENGINEER: LAMYETT DAMMON, P.E.  
 CHIEF ARCHITECT: KEVIN KIRCHEN  
 PROJECT MANAGER: JEFFREY H. HALL  
 SUITE 100  
 BOULDER, LA 70058

**WOODHOUSE SPA**  
 THE HIGH GROVES APARTMENTS  
 BATON ROUGE, LA

#	DESCRIPTION	DATE
1	REVISION #1	5/23/2013
2	REVISION #2, ADD NAIL EXHAUST	7/29/2013

JOB No:	2 163	DATE:	5/14/2013
DRAWN BY:	KJK	CHECKED BY:	KJK

LIGHTING PLAN

SHEET No: 10 OF 15

E-2