

WOODHOUSE SPA
THE HIGH GROVE APARTMENTS
BATON ROUGE, LA

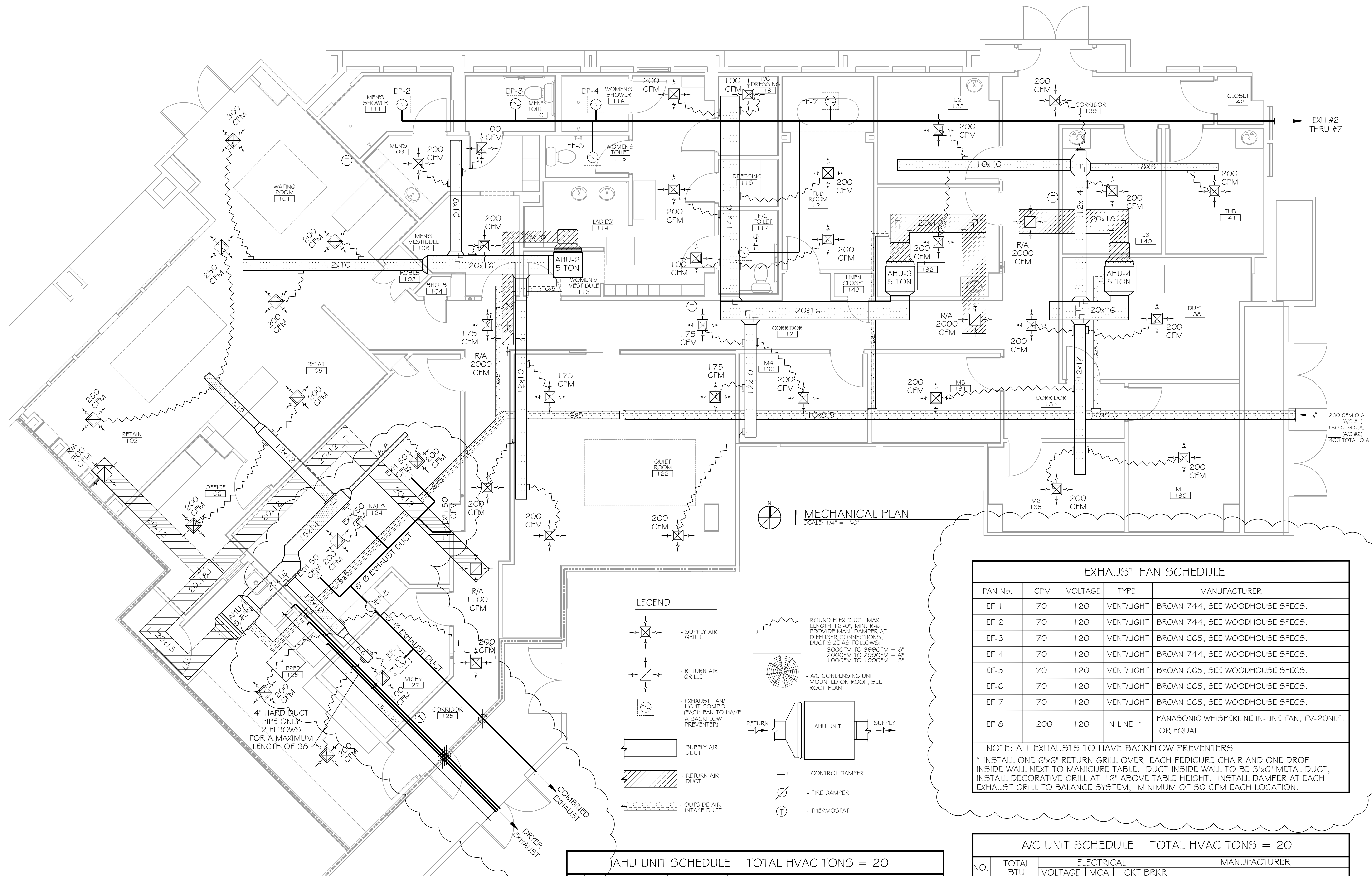
JOB No: 2163 DATE: 5/14/2013
DRAWN BY: KJK/JTL CHECKED BY: KJK

#	DESCRIPTION	DATE
1	REVISION #1	5/23/2013
2	REVISION #2, ADD NAIL EXHAUST	7/29/2013

MECHANICAL PLAN

SHEET No: 7 OF 15

M-1



MECHANICAL PLAN
SCALE: 1/4" = 1'-0"

LEGEND

- Supply Air Grille
- Return Air Grille
- Exhaust Fan Light Combo (Each fan to have a backflow preventer)
- Supply Air Duct
- Return Air Duct
- Outside Air Intake Duct
- Round Flex Duct, Max. Length 12'-0". Min. R.G. Provide Man. Damper at Diffuser Connections, Duct Size as follows:
300CFM to 399CFM = 8"
400CFM to 499CFM = 9"
500CFM to 599CFM = 10"
600CFM to 699CFM = 11"
700CFM to 799CFM = 12"
800CFM to 899CFM = 13"
900CFM to 999CFM = 14"
1000CFM to 1999CFM = 16"
- AHU Unit
- Control Damper
- Fire Damper
- Thermostat

EXHAUST FAN SCHEDULE

FAN No.	CFM	VOLTAGE	TYPE	MANUFACTURER
EF-1	70	120	VENT/LIGHT	BROAN 744, SEE WOODHOUSE SPECS.
EF-2	70	120	VENT/LIGHT	BROAN 744, SEE WOODHOUSE SPECS.
EF-3	70	120	VENT/LIGHT	BROAN 665, SEE WOODHOUSE SPECS.
EF-4	70	120	VENT/LIGHT	BROAN 744, SEE WOODHOUSE SPECS.
EF-5	70	120	VENT/LIGHT	BROAN 665, SEE WOODHOUSE SPECS.
EF-6	70	120	VENT/LIGHT	BROAN 665, SEE WOODHOUSE SPECS.
EF-7	70	120	VENT/LIGHT	BROAN 665, SEE WOODHOUSE SPECS.
EF-8	200	120	IN-LINE	PANASONIC WHISPERLINE IN-LINE FAN, FV-20NLF1 OR EQUAL

NOTE: ALL EXHAUSTS TO HAVE BACKFLOW PREVENTERS.
* INSTALL ONE 6"x6" RETURN GRILL OVER EACH PEDICURE CHAIR AND ONE DROP INSIDE WALL NEXT TO MANICURE TABLE. DUCT INSIDE WALL TO BE 3"x6" METAL DUCT, INSTALL DECORATIVE GRILL AT 12" ABOVE TABLE HEIGHT. INSTALL DAMPER AT EACH EXHAUST GRILL TO BALANCE SYSTEM, MINIMUM OF 50 CFM EACH LOCATION.

AHU UNIT SCHEDULE TOTAL HVAC TONS = 20

NO.	TOTAL BTU	CFM	O.A.	HEAT ELEC.	ELECTRICAL		MANUFACTURER	
					VOLTAGE	MCA		
1	60,000	2,000	200	15 KW	208V, 1Ø	48/22	MDP-1,3	TRANE OR EQUAL
2	60,000	2,000	200	15 KW	208V, 1Ø	48/22	MDP-5,7	
3	60,000	2,000	200	15 KW	208V, 1Ø	48/22	MDP-9,11	
4	60,000	2,000	200	15 KW	208V, 1Ø	48/22	MDP-13,15	

A/C UNIT SCHEDULE TOTAL HVAC TONS = 20

NO.	TOTAL BTU	ELECTRICAL		MANUFACTURER
		VOLTAGE	MCA	
1	60,000	208V, 1Ø	34.6	TRANE OR EQUAL
2	60,000	208V, 1Ø	34.6	
3	60,000	208V, 1Ø	34.6	
4	60,000	208V, 1Ø	34.6	

NOTE-1: MECHANICAL PLAN IS DRAWN DIAGRAMATIC. DUCT LOCATIONS ARE FOR REFERENCE ONLY. FIELD LOCATE AS NEEDED BETWEEN JOISTS OR TRUSSES. INSTALL FIRE DAMPER AT ANY LOCATION WHERE DUCT PENETRATES A FIRE WALL OR CEILING. ANY EXHAUST FAN FIXTURE INSTALLED IN A RATED CEILING SHALL BE RATED FOR THAT CEILING. REFER TO MECHANICAL NOTES # DETAILS ON SHEET M-2 FOR FURTHER INFORMATION.

NOTE-2: COORDINATE LOCATION OF ALL SUPPLY AIR DIFFUSERS, RETURN AIR GRILLES, EXHAUST FANS, ETC... WITH LIGHTING PLAN.