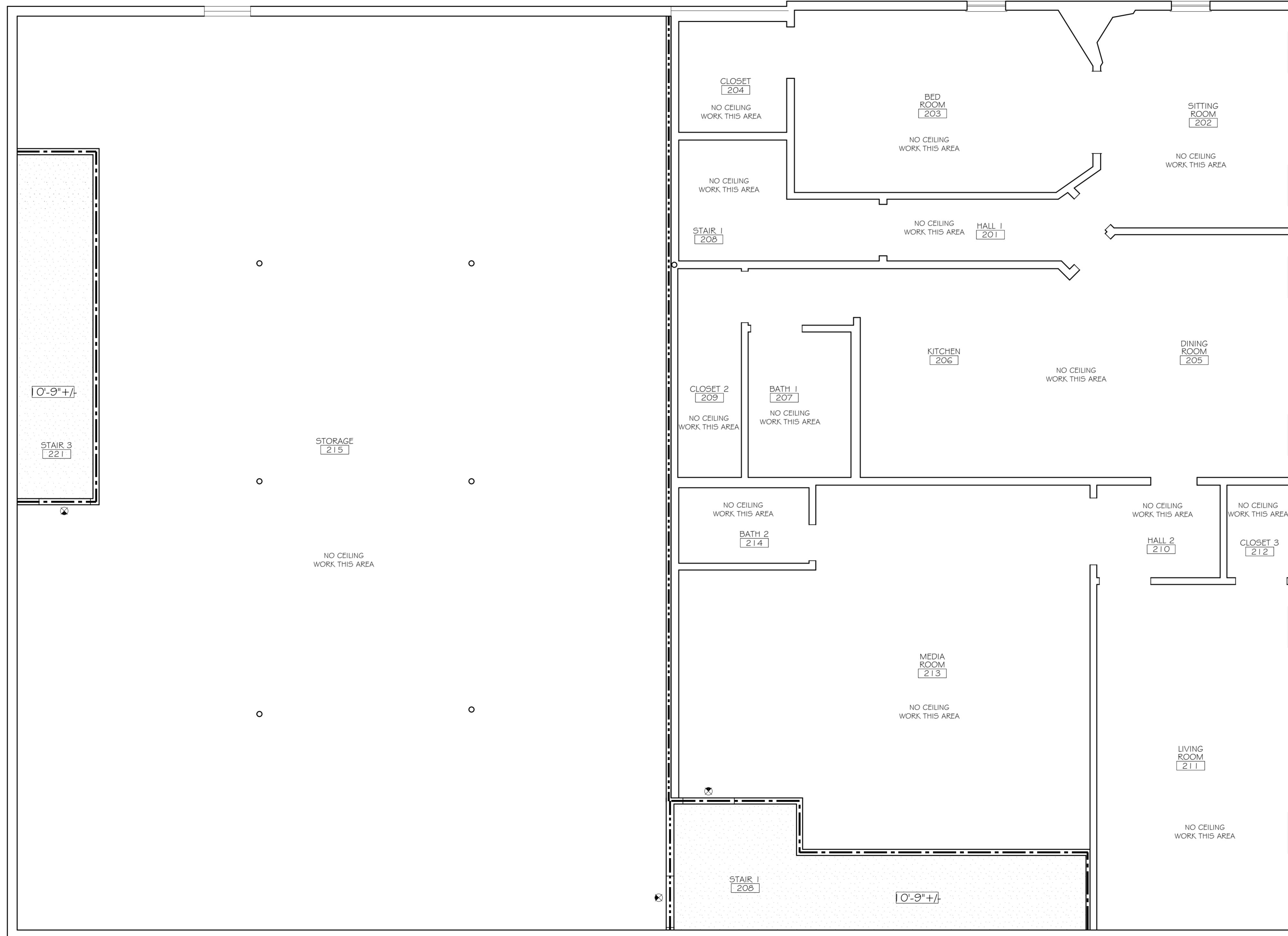


**NOTES**

- WHERE RECESSED DOWNLIGHTS ARE LOCATED IN A FIRE-RATED CEILING ASSEMBLY, CREATE A FIRE-RATED POCKET FOR LIGHT FIXTURE, MATCHING THE FIRE-RATING OF THE ASSEMBLY.
- ALL FIRE-RATED CEILING ASSEMBLIES SHALL BE UL DESIGN NO. L556 OR APPROVED EQUIVALENT.
- CEILING SEPARATING FIRST FLOOR FROM SECOND FLOOR, (EXCEPT WHERE CONTAINED WITHIN PROTECTED STAIR WELL) SHALL MAINTAIN A MINIMUM TWO-HOUR RATED SEPARATION.
- PROVIDE A FIRE-RATED CEILING ASSEMBLY EQUIVALENT TO THAT OF THE ADJACENT WALLS WHERE THE FIRE-RATED WALLS DO NOT EXTEND TO BELOW THE ROOF DECK. FIRE-RATED CEILING ASSEMBLY SHALL EXTEND CONTINUOUSLY FROM FIRE-RATED WALL TO FIRE-RATED WALL AND/OR TO EXTERIOR WALL.
- ALL PENETRATIONS TO FIRE-RATED ASSEMBLIES SHALL BE PROTECTED IN SUCH A WAY TO MAINTAIN SPECIFIED FIRE-RATING OF THAT ASSEMBLY.

**LEGEND**

- RECESSED CAN LIGHT
- DIRECTIONAL RECESSED CAN LIGHT
- ⊗ PENDANT LIGHT
- ⊕ CHANDELIER
- ☐ FANLIGHT
- ⊗ EXIT LIGHT
- 5/8" GYPSUM BOARD CEILING
- CEILING CLOUD WITH FINISHED WOOD PANELS
- ⊗ HVAC SUPPLY REGISTER
- LINEAR FLUORESCENT LIGHT FIXTURE



**DAMMON ENGINEERING, INC.**  
Architects & Engineers

ADMINISTRATIVE: dammonengineering.com  
dammoneng@bellsouth.net  
PHONE: 985-649-4432  
FAX: 985-641-4950

CHIEF ENGINEER: DAMMONT DAMMON, P.E.  
CHIEF ARCHITECT: KEVIN KITCHEN, NCARB  
554 OLD SPANISH TRAIL  
SUITE 100  
SUDELL, LA 70455

**BIKRAM YOGA STUDIO**  
8338 OAK STREET  
NEW ORLEANS, LA 70118

JOB No: 2175    DATE: 6-7-2013  
DRAWN BY: KJK    CHECKED BY: KJK

#	DESCRIPTION	DATE

**REFLECTED CEILING PLAN**

SHEET No: 6 of 14

**A4**