

# BUILDING CODE INFORMATION

**BUILDING CODE**  
IBC (INTERNATIONAL BUILDING CODE) 2009

**OCCUPANCY TYPE OF GROUP(S) (IBC 2009 CHAPTER 3):**  
RESIDENTIAL (R-1) BUSINESS STORAGE - LOW HAZARD (S-2)  
ASSEMBLY (LESS CONCENTRATED)

**CONSTRUCTION TYPE(S):**  
VB 10, 1&2 S.F. GROSS

**MAXIMUM AREA (S.F.):**  
RESIDENTIAL (R-1) 7,000 S.F.  
BUSINESS 9,000 S.F.  
STORAGE (S-2) 13,500 S.F.  
ASSEMBLY (A-2) 6,000 S.F.

**REQUIRED SEPARATION OF OCCUPANCIES (IBC TABLE 508.2.5):**  
R-2 & B - 2 HOUR  
S-2 & B - 2 HOUR  
R-2 & S-2 - 2 HOUR  
A-3 & S-2 - 2 HOUR  
A-3 & B - 2 HOUR  
A-3 & R-2 - 2 HOUR

**MAXIMUM AREA OF EXTERIOR WALL OPENINGS:**  
45%

**OCCUPANT LOAD CALCULATIONS BY OCCUPANCY:**  
RESIDENTIAL (R-2) 200 S.F./OCCUPANT = 12  
BUSINESS 100 S.F./OCCUPANT = 28  
STORAGE (S-2) 200 S.F./OCCUPANT = 12  
ASSEMBLY (A-3) 15 S.F./OCCUPANT = 102  
TOTAL = 154

**EXIT REQUIREMENTS:**  
FIRST FLOOR - 2 EXITS  
SECOND - 2 EXITS

**MAXIMUM EXIT ACCESS TRAVEL DISTANCE (TABLE 1016.1):**  
B - 200' R-2 - 200' S-2 - 300' A-3 - 200'

**MINIMUM CORRIDOR WIDTH (SECTION 1018.1 & SECTION 1005.1):**  
44"

**MAXIMUM DEAD END CORRIDOR (SECTION 1018.4):**  
20'

**MAXIMUM COMMON PATH OF TRAVEL (1014.3):**  
S-2 - 75' R-2 - 75' A-2 - 75' B - 100'

**FIRE RESISTANCE RATING REQUIREMENTS FOR BLDG. ELEMENTS: (TBL 601)**  
STRUCTURAL FRAME = 0 HRS.  
BEARING WALLS (INTERIOR AND EXTERIOR) = 0 HRS.  
NON-BEARING WALLS = 0 HRS.  
FLOOR CONSTRUCTION = 0 HRS.  
ROOF CONSTRUCTION = 0 HRS.

**FIRE ALARM SYSTEM REQUIREMENTS: (SEC 907)**  
THIS BLDG. DOES NOT REQUIRE A FIRE ALARM SYSTEM

**FIRE PROTECTION SYSTEM REQUIREMENTS: (SEC 903)**  
THIS BLDG. DOES NOT REQUIRE A FIRE PROTECTION SYSTEM IN ACCORDANCE WITH SEC 903.2.9

# LIFE-SAFETY INFORMATION

**LIFE SAFETY CODE:**  
NFPA 101 LIFE SAFETY CODE 2009

**OCCUPANCY:**  
ASSEMBLY CHAPTER 12 1,541 S.F.  
RESIDENTIAL (SINGLE FAMILY) N/A 2,340 S.F.  
BUSINESS CHAPTER 38 2,791 S.F.  
STORAGE (S-2) CHAPTER 42 2,218 S.F.

**REQUIRED SEPARATION:**  
S/B - 2 HOUR S/R - 2 HOUR B/R - 2 HOUR

**CLASSIFICATION OF HAZARD OF CONTENTS:**  
ORDINARY

**CONSTRUCTION TYPE(S) - (CHAPTER 8, TABLE A.8.2.1.2)**  
V(000)  
NON-SPRINKLERED

**AREA CALCULATIONS BY OCCUPANCY:**  
FIRST FLOOR  
ASSEMBLY 1,541 S.F.  
RESIDENTIAL (SINGLE FAMILY) N/A 126 S.F.  
BUSINESS 2,791 S.F.

**SECOND FLOOR**  
STORAGE 2,218 S.F.  
RESIDENTIAL (SINGLE FAMILY) N/A 2,388 S.F.

**OCCUPANT LOAD CALCULATIONS BY OCCUPANCY:**  
RESIDENTIAL (SINGLE FAMILY) 200 S.F./OCCUPANT = 6  
BUSINESS 100 S.F./OCCUPANT = 28  
STORAGE 500 S.F./OCCUPANT = 5  
ASSEMBLY (LESS CONCENTRATED) 15 S.F./OCCUPANT = 103  
TOTAL = 142

**MEANS OF EGRESS:**  
NUMBER OF EXITS - R-1 B-2 S-1 A-2  
MINIMUM EXIT SEPARATION DISTANCE FOR REMOTELY LOCATED EXITS  
1/2 DIAGONAL 36'-3" (S) 43'-0" (B) 29'-8" (A)  
MAXIMUM DEAD-END CORRIDOR TRAVEL DISTANCE: 20'-0"  
MAXIMUM COMMON PATH OF TRAVEL DISTANCE: R - NR, B - 100', A - 75', S - 50'  
MAXIMUM TRAVEL DISTANCE TO EXITS: R - NR, B - 200', A - 200', S - 200'  
STAIR WIDTH REQUIREMENTS: 36"

**HORIZONTAL EXIT:**  
NONE

**EXTINGUISHMENT REQUIREMENTS:**  
SPRINKLER (NOT REQUIRED)

**SUBDIVISION OF BUILDING SPACE:**  
NONE

**DETECTION/ALARM:**  
NONE

**EXIT REQUIREMENTS:**  
FIRST FLOOR - 2 EXITS  
SECOND FLOOR - 2 EXITS

**MAXIMUM EXIT ACCESS TRAVEL DISTANCE (TABLE 1016.1):**  
B - 300' R-2 - 250' S-2 - 250'

**MINIMUM CORRIDOR WIDTH (SECTION 1018.1 & SECTION 1005.1):**  
44"

**MAXIMUM DEAD END CORRIDOR (SECTION 1018.4):**  
50'

**MAXIMUM COMMON PATH OF TRAVEL (1014.3):**  
B & S-2 - 100' R-2 - 125' A - 75'

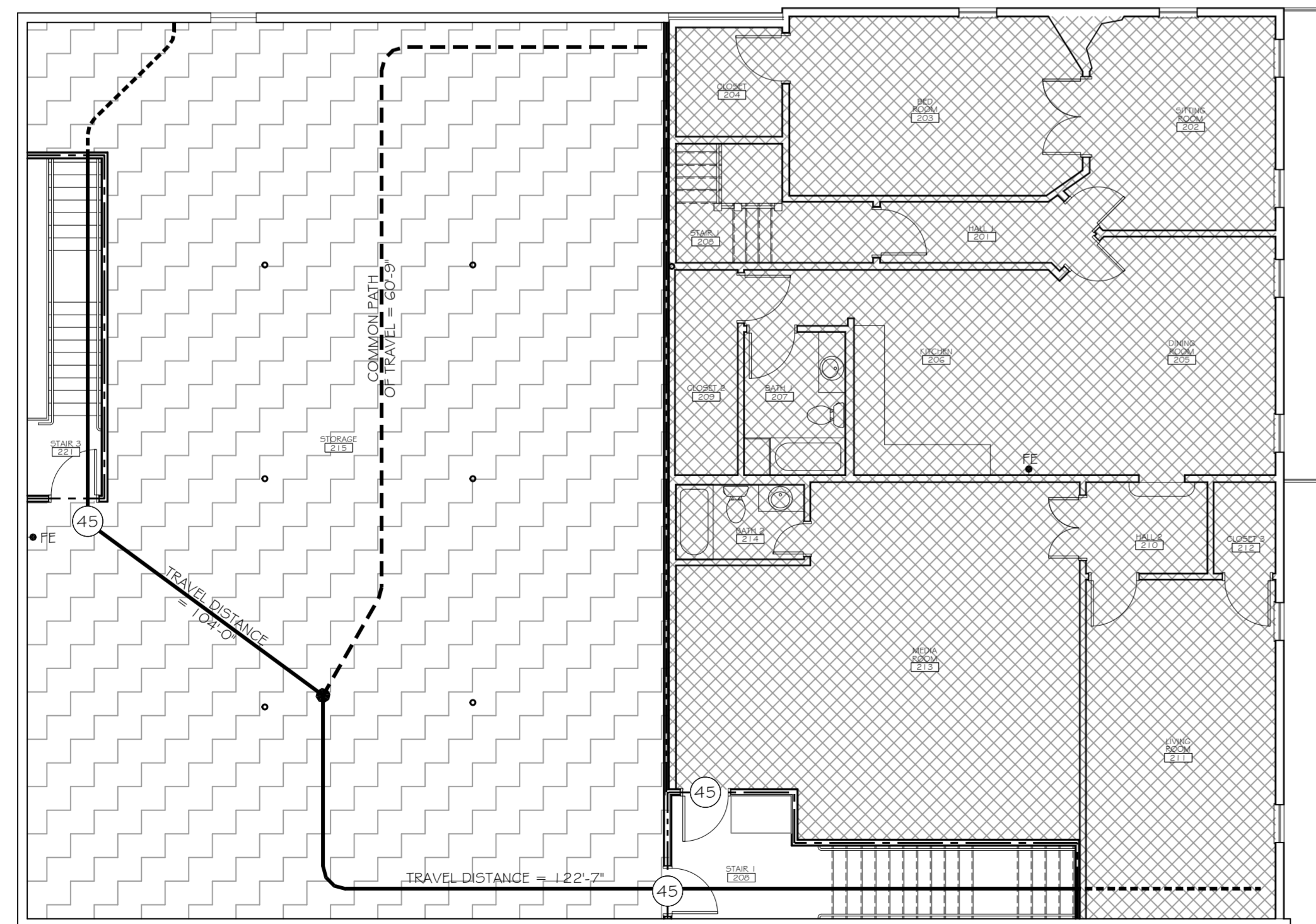
# LEGEND

**OCCUPANCIES**

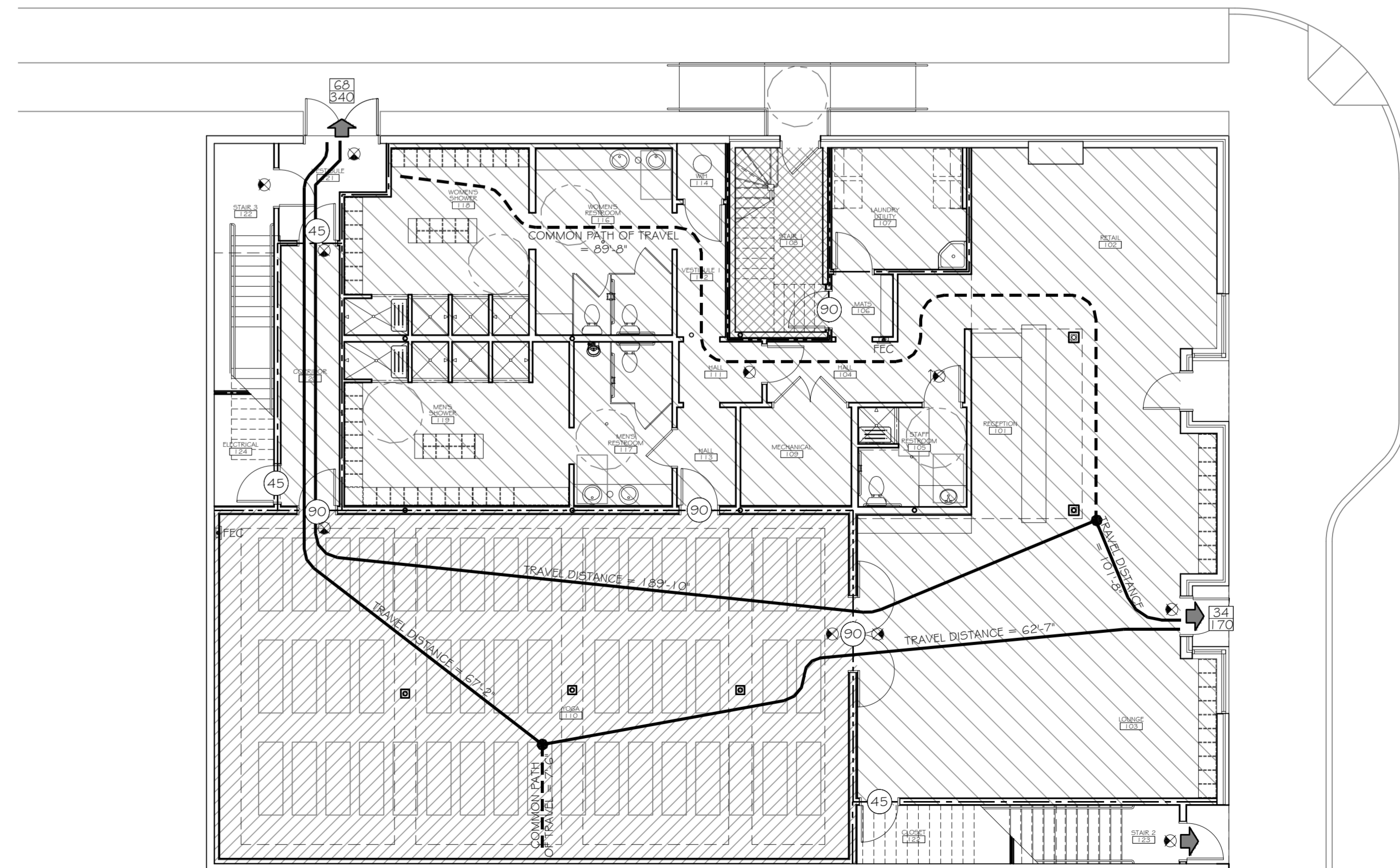
- RESIDENTIAL
- ASSEMBLY
- BUSINESS
- STORAGE

**SYMBOLS**

- EXITS
- DOOR FIRE RATING (MINUTES)
- DOOR WIDTH/GRESS CAPACITY
- EXIT LIGHT
- FIRE EXTINGUISHER CABINET
- FIRE EXTINGUISHER W/ WALL MOUNTED BRACKET
- ONE-HOUR RATED PARTITION
- TWO-HOUR RATED PARTITION
- COMMON PATH OF TRAVEL/TRAVEL DISTANCE
- TRAVEL DISTANCE
- DECISION POINT



2 SECOND FLOOR LIFE-SAFETY PLAN  
SCALE: 1/8" = 1'-0"



1 FIRST FLOOR LIFE-SAFETY PLAN  
SCALE: 1/8" = 1'-0"

**DAMMON ENGINEERING, INC.**  
Architects & Engineers

ADMINISTRATIVE: 504 OLD SPANISH TRAIL, SUITE 100, SUDELL, LA 70455  
PHONE: 985-641-5932  
FAX: 985-641-5950

PROJECT: BIKRAM YOGA STUDIO  
ARCHITECT: KEVIN KUCHEN, NCARB  
ENGINEER: LAWRETT DAMMON, P.E.  
SUDELL, LA 70455

**BIKRAM YOGA STUDIO**  
8338 OAK STREET  
NEW ORLEANS, LA 70118

JOB No: 2175 DATE: 6-7-2013  
DRAWN BY: KJK CHECKED BY: KJK

#	DESCRIPTION	DATE

## LIFE-SAFETY PLANS

SHEET No: 2 of 14

G2