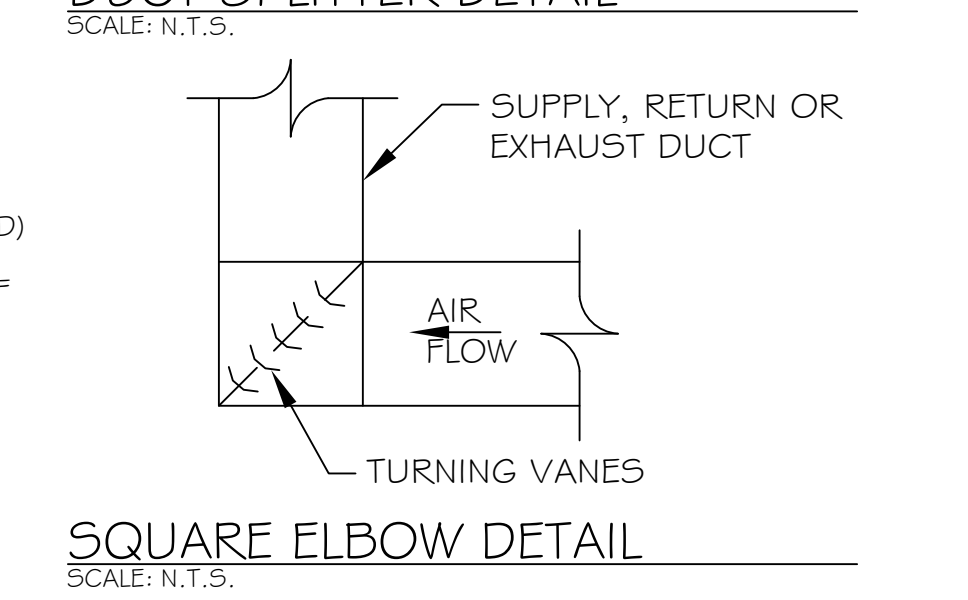
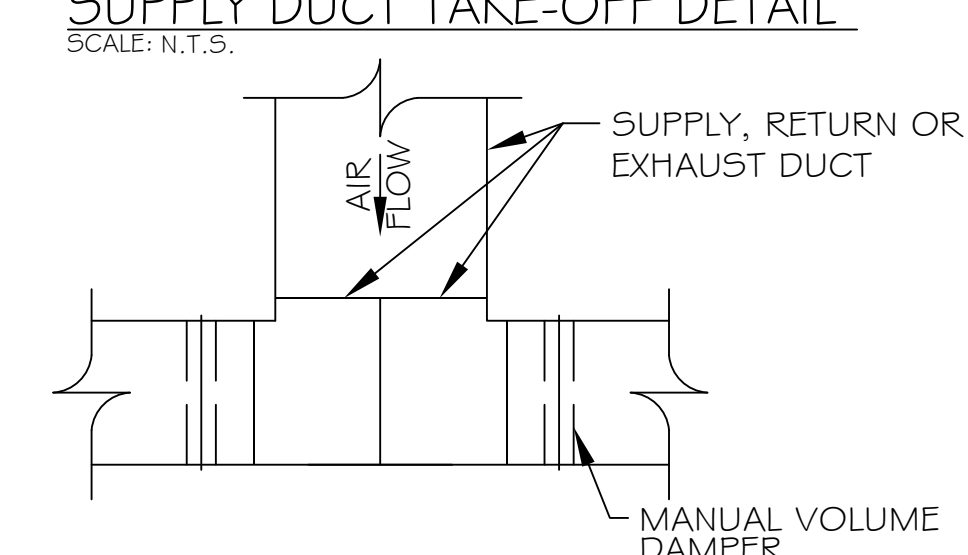
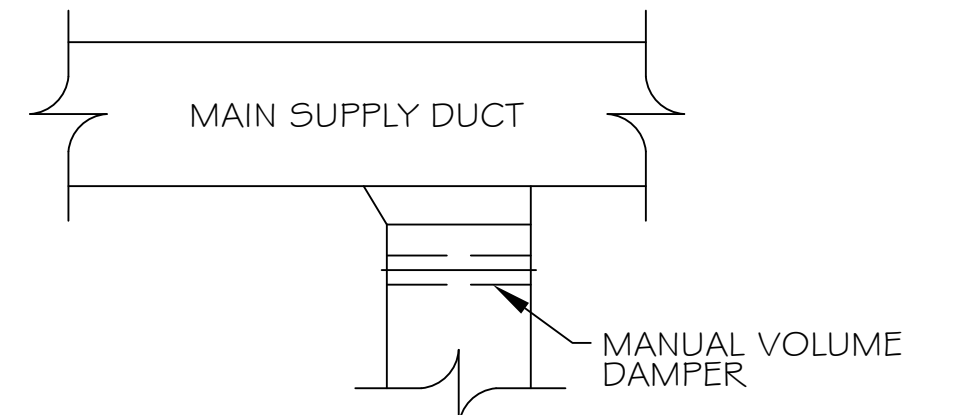


EXHAUST FAN SCHEDULE				
FAN No.	CFM	VOLTAGE	TYPE	MANUFACTURER
EF-1	110	120	VENT/LIGHT	BROAN, SEE SPECS.
EF-2	110	120	VENT/LIGHT	BROAN, SEE SPECS.
EF-3	110	120	VENT/LIGHT	BROAN, SEE SPECS.

NOTE: ALL EXHAUSTS TO HAVE BACKFLOW PREVENTERS.

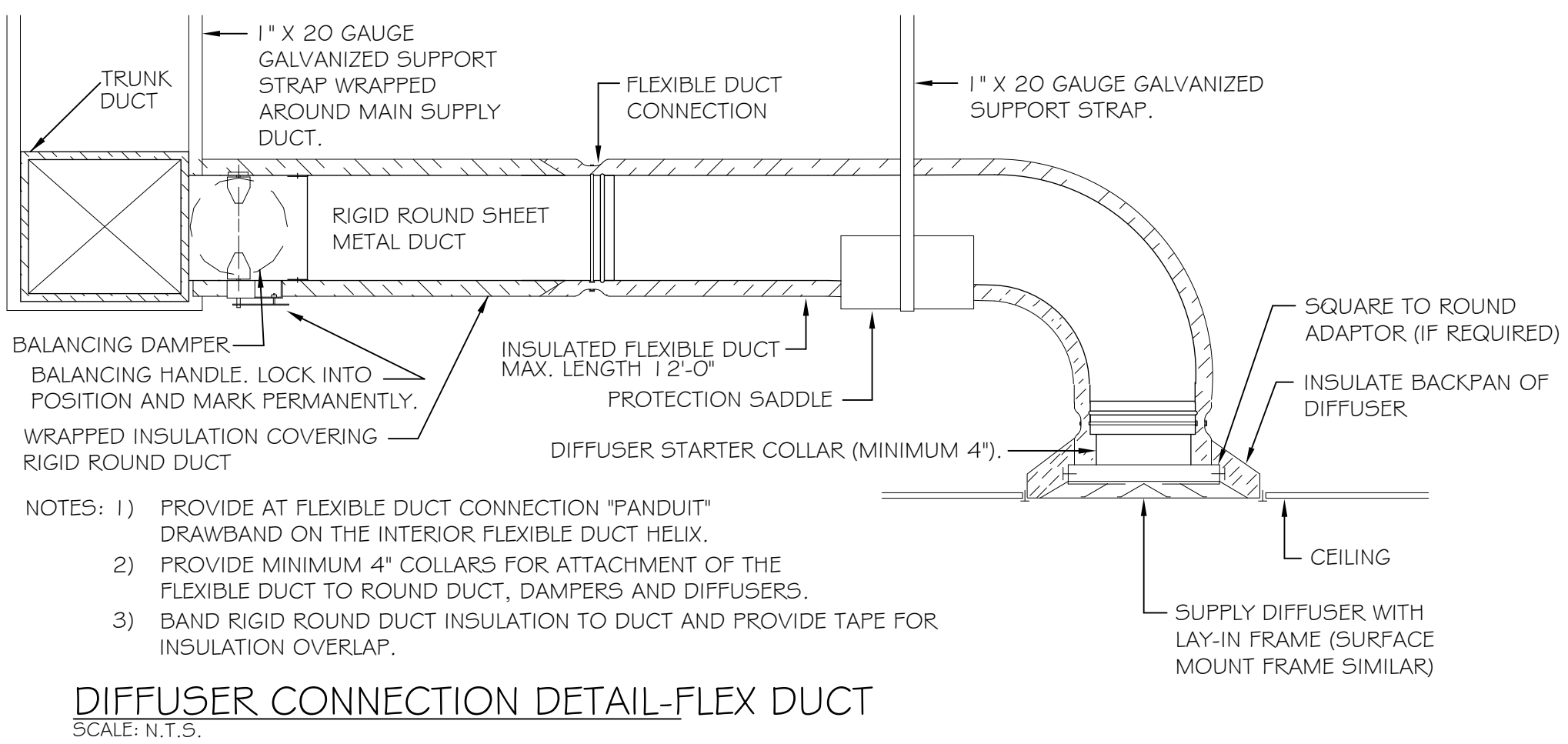
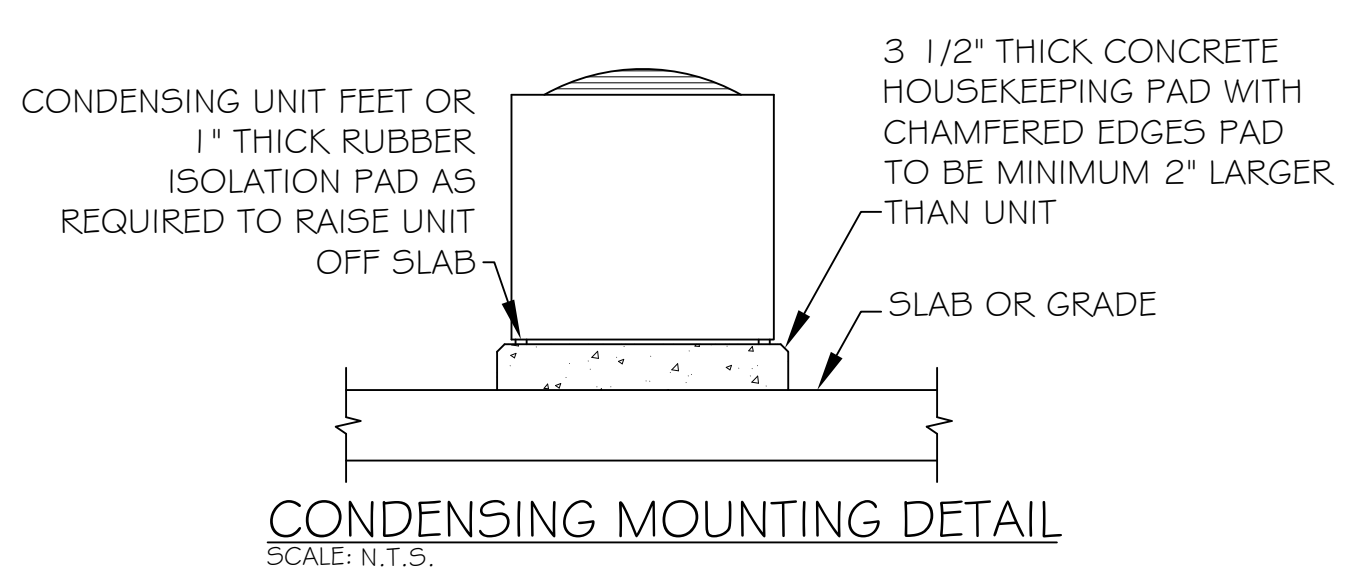
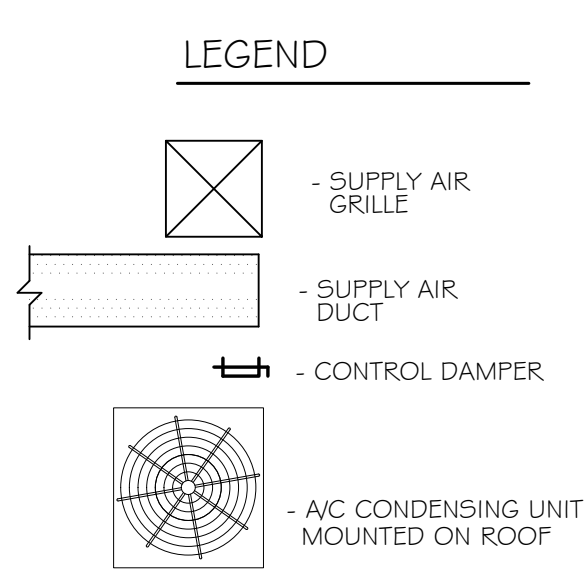
AHU UNIT SCHEDULE TOTAL HVAC TONS = 15								
NO.	TOTAL BTU	CFM	O.A.	HEAT ELEC.	ELECTRICAL			MANUFACTURER
					VOLTAGE	MCA	CKT BRKR	
1	120,000 10 TON	4,000	100	15 KW	208V, 1Ø	48/22	MDP-1,3	TRANE OR EQUAL
2	60,000 5 TON	2,000	100	15 KW	208V, 1Ø	48/22	MDP-5,7	

- ### HVAC NOTES
- CONCEALED DUCTWORK TO BE UL-181, CLASS 1, FIBERGLASS DUCTBOARD. DUCTS SHALL BE SIZED TO LIMIT MAIN DUCTS TO 1000 CFM & SECONDARY DUCTS TO 800 CFM. TO BE INSTALLED PER SMACNA STANDARDS.
 - EXPOSED DUCTWORK TO BE GALVANIZED SHEET METAL PER SMACNA STANDARDS. LINE WITH NEOPRENE COATED 1.0" 1.5 POUNDS PER CUBIC FOOT DUCT INSULATION.
 - ROUND FLEXIBLE DUCT TO BE UL-181, CLASS 1, AIR DUCT MATERIALS.
 - DUCT SIZES SHOWN ARE CLEAR INSIDE DIMENSIONS.
 - IN ALL SYSTEMS OVER 2000 CFM AND LESS THAN 15,000 CFM, SMOKE DETECTORS SHALL BE INSTALLED IN ACCORDANCE WITH NFPA 72E IN THE RETURN DUCT DOWNSTREAM OF THE AIR HANDLING UNIT AND ALL FILTERS TO AUTOMATICALLY STOP THE FAN.
 - PROVIDE U.L. LISTED 125' F' FIRE RATED IN RETURN AIR OF EACH SYSTEM UNDER 2000 CFM TO SHUT DOWN THE FAN IN THE EVENT OF FIRE.
 - PROVIDE U.L. RATED FIRE DAMPERS WHERE REQUIRED AT ALL DUCT PENETRATIONS OF FIRE-RATED ASSEMBLIES AND WHERE REQUIRED BY CODE, INCLUDING OUTSIDE AIR INTAKES.
 - CONDENSATE DRAINS TO BE PVC PIPE RUN TO PLUMBERS P-TRAP WITHIN FIVE FEET OF AIR HANDLING UNITS.
 - ALL AIR HANDLING SYSTEMS TO BE BALANCED TO ASSURE PROPER AIR FLOWS PER PLANS.
 - ALL THERMOSTATS TO BE AUTOMATIC CHANGEOVER WITH HEAT SWITCH.
 - EXHAUST FAN EQUAL TO BROAN MODEL NO. 100 CF. OR EQUAL. FAN SHALL BE CONTROLLED BY A SWITCH ON THE WALL IN THE SAME LOCATION AS LIGHT SWITCH(S). PROVIDE BACK DRAFT DAMPER.
 - PROVIDE AND INSTALL WATER PROOF GRILLE VENT IN PROPER ROOF LOCATION FOR PLUMBING FIXTURE EXHAUST.
 - ALL SUPPLY AIR VENTS SHALL BE EQUIPPED WITH AIR CONTROL DAMPERS.
 - LOCATE OUTDOOR UNITS AS SHOWN ON ARCH. DWGS.
 - REFRIGERANT LINES SHALL BE SIZED BY UNIT MANUFACTURER AND INSTALLED ACCORDING TO MANUFACTURERS' INSTRUCTIONS.
 - FRESH AIR SHALL BE SUPPLIED TO EACH AIR HANDLER THROUGH EXTERIOR WALL DUCT SUPPLIED WITH A CONTROL DAMPER.
 - INSTALL FIRE DAMPER WHERE S.A. & R.A. DUCTS PENETRATE 1 HOUR RATED CEILING.
 - ALL ELECTRICAL, MECHANICAL, AND PLUMBING PENETRATING FIRE WALLS SHALL BE FIRE CAULKED. (PENETRATIONS THROUGH RATED CONSTRUCTION SHALL BE SEALED WITH A MATERIAL CAPABLE OF PREVENTING THE PASSAGE OF FLAMES AND HOT GASES WHEN TESTED IN ACCORDANCE WITH ASTM-E8-14).
 - ALL MECHANICAL SYMBOLS ARE DRAWN DIAGRAMMATICALLY. CONTRACTOR TO VERIFY WITH OWNER LOCATIONS OF VENTS, DAMPERS, REGISTERS, ETC.
 - REFER TO STRUCTURAL DRAWINGS TO COORDINATE LOCATION(S) & MOUNTING OF MECHANICAL EQUIPMENT.
 - FLEXIBLE DUCTWORK LENGTH NOT TO EXCEED 10'-0".
 - REFER TO REFLECTED CEILING PLAN FOR FINAL GRILLE AND DIFFUSER LOCATIONS AND COORDINATE AS REQUIRED.
 - FINAL LOCATION OF TEMPERATURE CONTROLS TO BE COORDINATED WITH OWNER AT JOB SITE.
 - PROVIDE AND INSTALL SMOKE DETECTORS AS APPROVED BY LOCAL AHJ'S. PLACE NEAR R/A AND S/A OPENINGS OF AHU AND PROVIDE, WITH ACCESS PANEL, WIRING BY ELECTRICAL CONTRACTOR.
 - FRESH AIR INTAKES ARE REQUIRED TO HAVE MOTORIZED OR GRAVITY DAMPERS TO SHUT OFF WHEN SYSTEM IS NOT RUNNING. ALL THERMOSTATS MUST BE PROGRAMMABLE. SEE SECTIONS 502.4.4 OR 503.2.4.3 OF THE 2006 INTERNATIONAL ENERGY CODE.



NOTE-1: MECHANICAL PLAN IS DRAWN DIAGRAMATIC. DUCT LOCATIONS ARE FOR REFERENCE ONLY. FIELD LOCATE AS NEEDED BETWEEN JOISTS OR TRUSSES. INSTALL FIRE DAMPER AT ANY LOCATION WHERE DUCT PENETRATES A FIRE WALL OR CEILING. ANY EXHAUST FAN FIXTURE INSTALLED IN A RATED CEILING SHALL BE RATED FOR THAT CEILING. REFER TO MECHANICAL NOTES & DETAILS ON SHEET M-2 FOR FURTHER INFORMATION.

NOTE-2: COORDINATE LOCATION OF ALL SUPPLY AIR DIFFUSERS, RETURN AIR GRILLES, EXHAUST FANS, ETC... WITH LIGHTING PLAN.



DAMMON
ENGINEERING, INC.
Architects & Engineers

4400 PINECREAK BLVD. SUITE 200
DAMMON ENGINEERING, INC.
PHONE: 985-641-5932
FAX: 985-641-5950

CHIEF ENGINEER: BRADY DANON, P.E.
CHIEF ARCHITECT: KEVIN KIRCHEN, NCARB
554 OLD SPANISH TRAIL
SUITE 100
SUDELL, LA 70458

The above drawings and specifications, when read in conjunction with the general conditions of contract, shall govern the project. Dammon Engineering, Inc. and its employees shall not be held responsible for any errors or omissions in these drawings and specifications. It is the responsibility of the contractor to verify all dimensions and conditions before construction begins. Dammon Engineering, Inc. reserves the right to make changes to these drawings and specifications without notice. The contractor shall be responsible for obtaining all necessary permits and approvals from the appropriate authorities.

JOB No: 2175 DATE: 6-7-2013 CHECKED BY: KJK
DRAWN BY: JCT

REVISIONS

#	DESCRIPTION	DATE

BIKRAM YOGA STUDIO
8338 OAK STREET
NEW ORLEANS, LA 70118

MECHANICAL PLAN

SHEET No: 10 of 14

MI