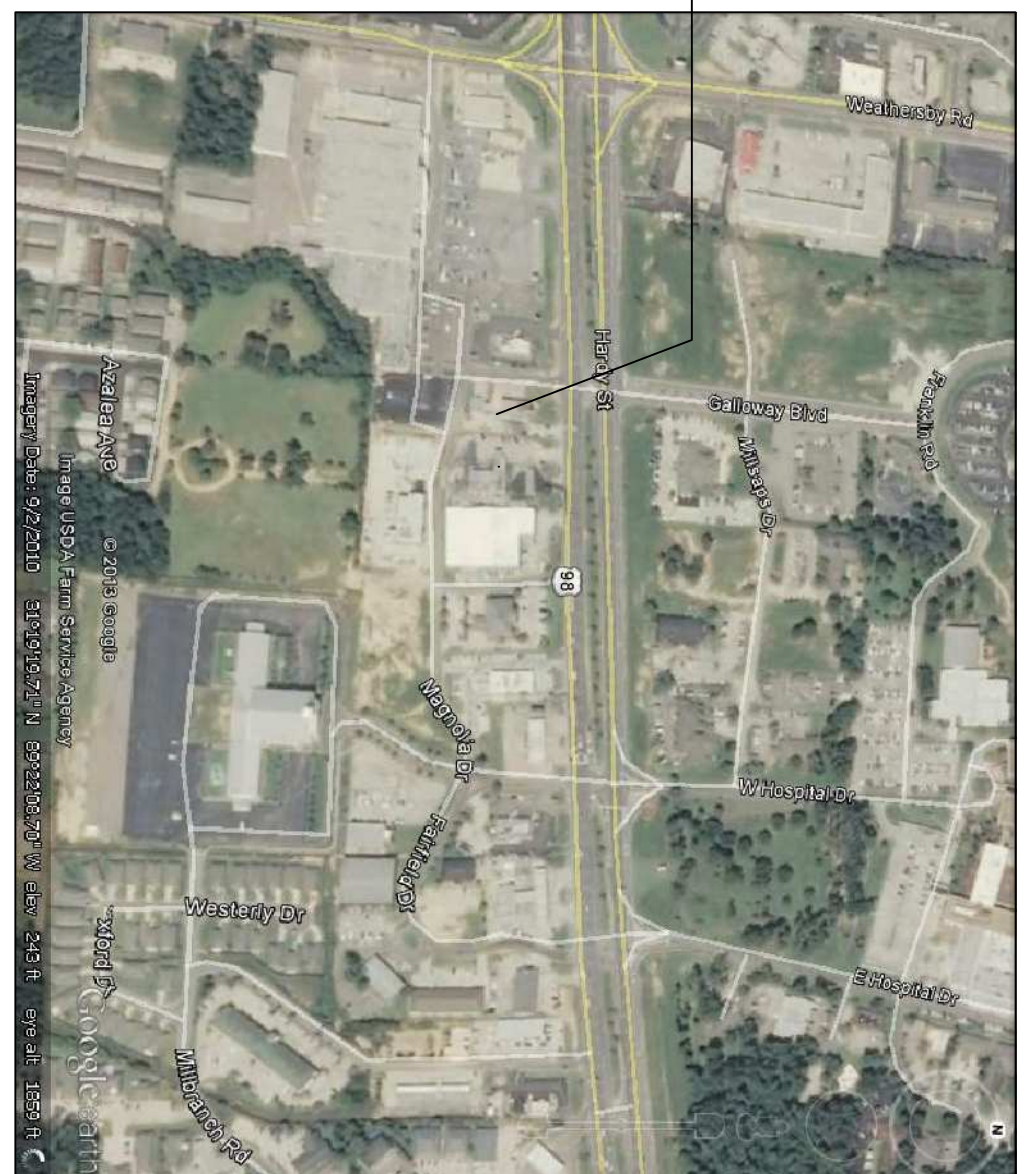


SITE PLAN
SCALE: 1"=20'-0"



VICINITY MAP

SITE LEGEND

- PROPERTY LINE
- - - - - BUILDING SETBACK MINIMUM
- ➔ DIRECTION OF TRAFFIC FLOW
- ⊙ CAUTION CONES
- EXTERIOR LIGHT

SITE PLAN NOTES
 1. ROOFING MATERIAL: METAL ROOFING PANEL
 2. SIDING MATERIAL: SPLIT FACE BLOCK
 3. UTILITIES: ALL UTILITIES SHALL BE PLACED UNDERGROUND

SITE LIGHTING
 EXTERIOR LIGHTING SHALL BE SHADED OR INWARDLY DIRECTED IN SUCH A MANNER SO THAT NO DIRECT LIGHTING OR GLARE BE CAST BEYOND THE PROPERTY LINE. THE INTENSITY OF SUCH LIGHTING SHALL NOT EXCEED ONE FOOT CANDLE AS MEASURED AT THE ABUTTING PROPERTY LINE.

NOTE:
 PAVEMENT IN ALL PARKING AREAS SHALL BE 6" THICK CONCRETE.

RAINFORREST CARWASH

5026 HARDY ST.
 HATTIESBURG, MISSISSIPPI

JOB No: 2176 DATE: 06-28-2013
 DRAWN BY: JCT CHECKED BY: CD

REVISIONS		
#	DESCRIPTION	DATE
A	ADDED RESTROOMS	07-19-13



DAMMON
 ENGINEERING, INC.

CHIEF ENGINEER, EMMETT DAMMON, P.E.
 554 OLD SPANISH TRAIL
 SLIDELL, LA 70458

dammoneengineering.com
 dammoneng@bellsouth.net
 PHONE: 985-649-5832
 FAX: 985-641-5950

SITE PLAN

SHEET No: 2 OF 22

C-1