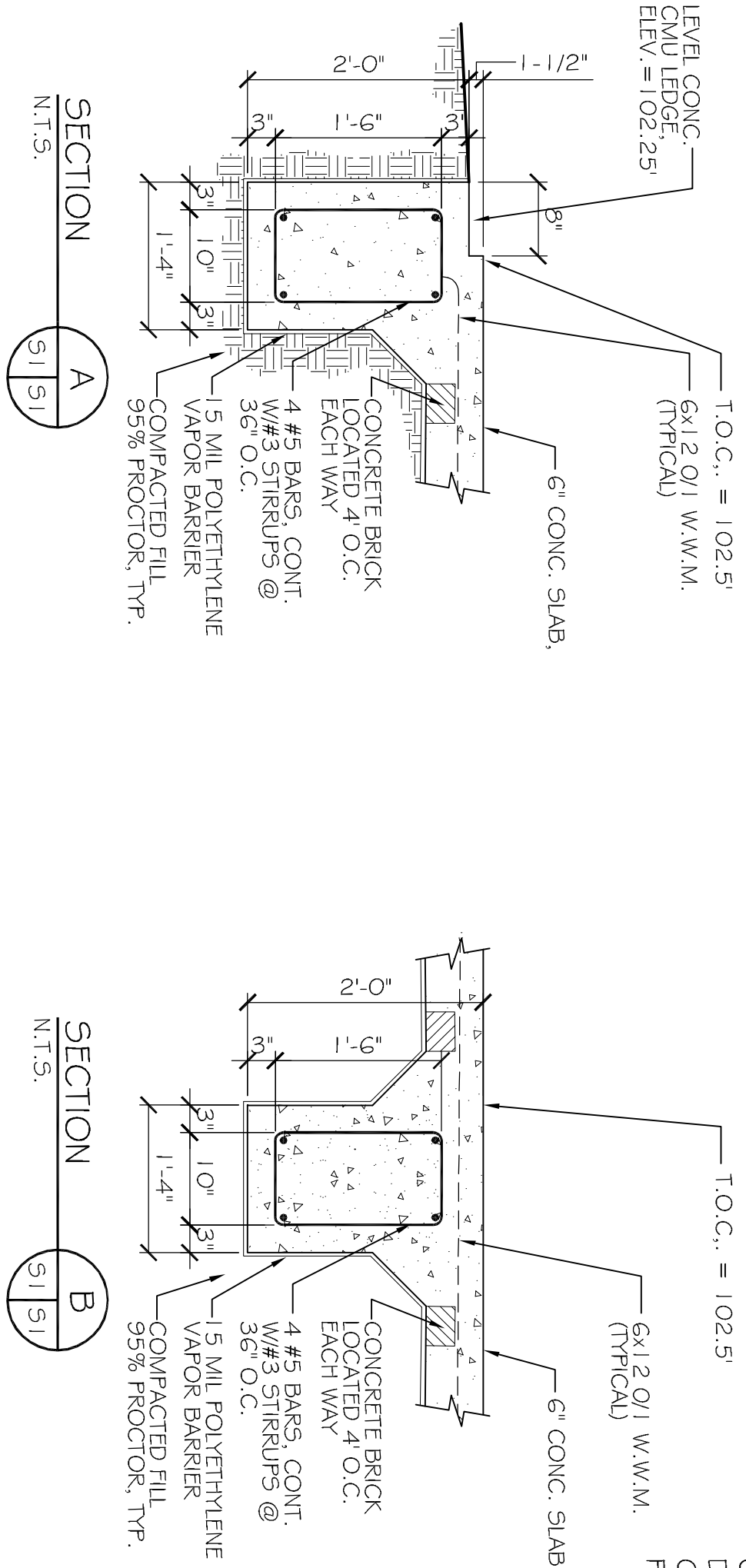
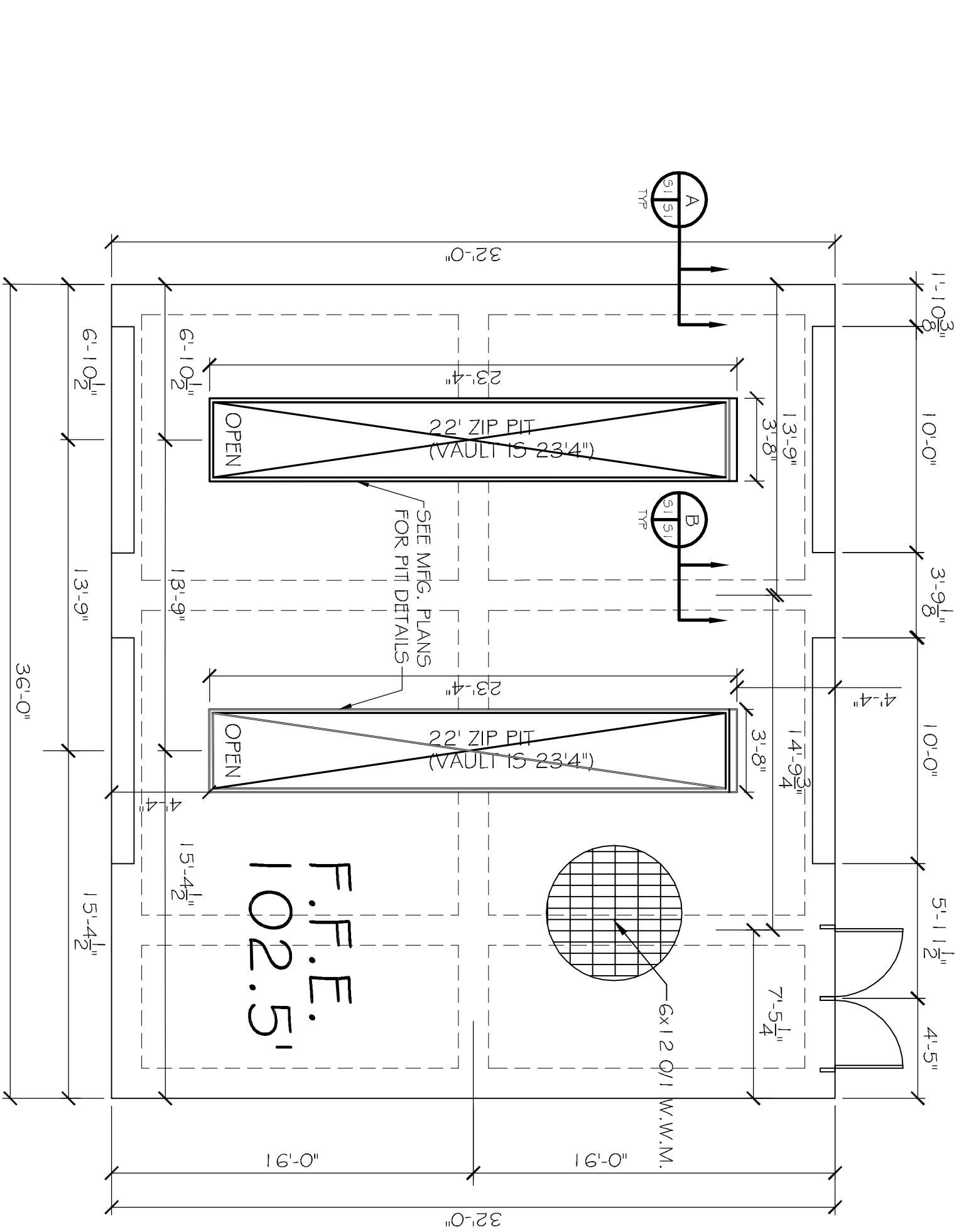


GENERAL FOUNDATION NOTES

1. THE CONCRETE MIX SHALL HAVE A MINIMUM COMPRESSIVE STRENGTH OF 3,000 PSI AT 28 DAYS. CONCRETE MIX SHALL BE IN ACCORDANCE WITH ACI-318.
2. ALL CONVENTIONAL REINFORCING STEEL SHALL MEET ASTM-A615 (GRADE 60).
3. ONE LAYER OF POLYETHYLENE VAPOR BARRIER SHALL BE PLACED UNDER ALL CONCRETE. VAPOR RETARDER TO BE 15 MIL STRENGTH, ASTM E 1745 CLASS A, PERMEANCE LESS THAN 0.01 PERMS. EQUAL TO STEGO INDUSTRIES STEGO WRAP, ECO-SHIELD-E 15 MIL BY EPFO, OR RONBAR 15 BY FLATIRON FILMS. PROVIDE APPROPRIATE ACCESSORIES FOR A COMPLETE SYSTEM.
4. ALL REINFORCING STEEL AND MESH SHALL BE SECURELY SUPPORTED TO PREVENT BOTH VERTICAL AND HORIZONTAL MOVEMENT DURING CONCRETE PLACEMENT.
5. THE CONTRACTOR SHALL VERIFY ALL DROPS, OFFSETS, CMU LEDGES, DIMENSIONS AND CONFIGURATIONS. CONTRACTOR MUST BE RESPONSIBLE FOR SAME.
6. GRADE BEAM SIZES MAY VARY BY -5% +20%.
7. ALL SUB GRADE FILL SHALL BE SELECT GRANULAR MATERIAL COMPACTED TO 95% STANDARD PROCTOR DENSITY IN A MAXIMUM OF 6 LIFTS.
8. A MINIMUM OF 6" CONCRETE SHALL BE MAINTAINED THROUGHOUT THE SLAB.
9. ALL RUNOFF WATER MUST BE CARRIED AWAY FROM THE SLAB TO PREVENT SATURATION OF THE SUB-BASE.
10. ALL TREES WITHIN CLOSE PROXIMITY SHALL BE REMOVED TO PREVENT THE ROOTS FROM EXTENDING UNDER THE SLAB.
11. PROVIDE AND MAINTAIN IMMEDIATE SITE DRAINAGE BEFORE, DURING, AND AFTER CONSTRUCTION. PROVIDE FOOTING EXCAVATIONS, SHELTERS, AND PUMP PUMPS AS MAY BE REQUIRED TO IMMEDIATELY DRAIN ALL RAINWATER FROM THE CONSTRUCTION AREA. FOOTING EXCAVATIONS SHOULD BE OBSERVED AND CONCRETE PLACED AS QUICKLY AS POSSIBLE TO AVOID EXPOSURE OF THE FOOTING BOTTOMS TO WETTING AND DRINKING. SURFACE RUNOFF WATER SHOULD BE DRAINED AWAY FROM THE EXCAVATIONS AND NOT BE ALLOWED TO POND PRIOR OR AFTER CONCRETE PLACEMENT. IF IT IS REQUIRED THAT A FOOTING EXCAVATION BE LEFT OPEN FOR MORE THAN ONE DAY, THEY SHOULD BE PROTECTED TO REDUCE EVAPORATION OR ENTRY OF MOISTURE.
12. NEW SPREAD CONCRETE FOOTINGS AND CONTINUOUS FOOTINGS, BEARING ON COMPACTED STRUCTURAL FILL AT LEAST 2 FEET BELOW FINISHED GRADE, SHOULD BE DESIGNED FOR MAXIMUM NET ALLOWABLE BEARING PRESSURES OF 1,200 PSF AND 2,000 PSF, RESPECTIVELY, BASED ON DEAD LOADS AND DESIGN LIVE LOADS.
13. FOUNDATION SETTLEMENTS SHOULD NOT EXCEED 1/4 INCH. DIFFERENTIAL SETTLEMENT IS ESTIMATED TO BE LESS THAN 1 INCH.
14. TREAT SOIL BELOW SLAB FOR TERMITES.



NOTE:
COORDINATE WITH EQUIPMENT MANUFACTURER DRAWINGS AND PROVIDE EQUIPMENT ELECTRICAL, CONDUIT, WIRING, AND PLUMBING REQUIREMENTS PRIOR TO COMMENCING ANY WORK.

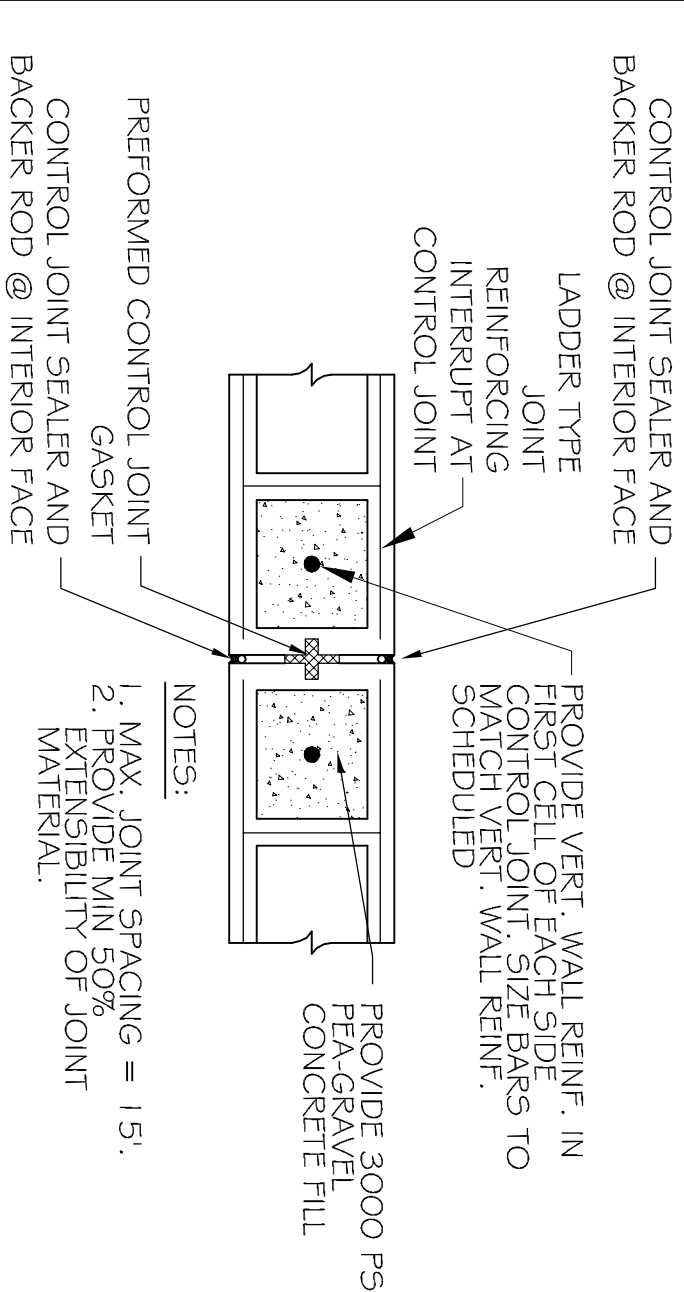


FOUNDATION PLAN
SCALE: 3/16" = 1'-0"

CMU LINTEL SCHEDULE

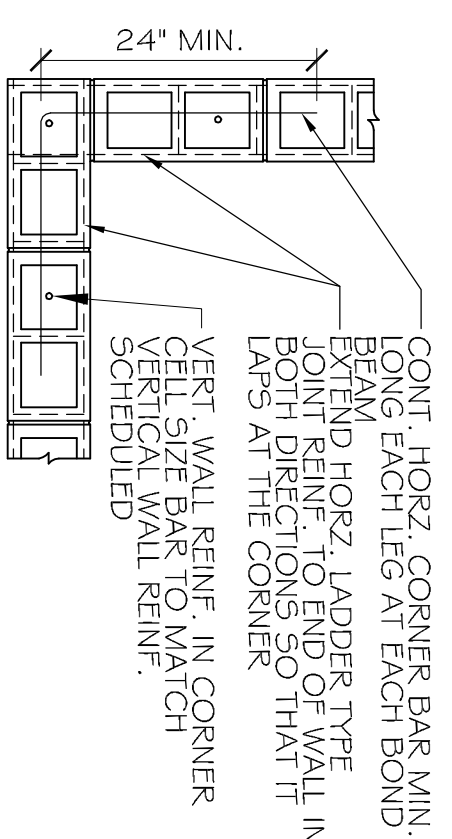
WIDTH (W)	CLEAR SPAN	DEPTH (D)	HORIZ. REINF.
6" TYP AT ALL CMU WALLS	UP TO 3'-4"	6"	(1) #6 BOTTOM
	UP TO 6'-4"	6"	(1) #6 T&B
	UP TO 14'-0"	24"	(2) #6 T&B

PROVIDE 3000 PSI FEA-GRAVEL CONCRETE FILL FOR ALL LINTELS.



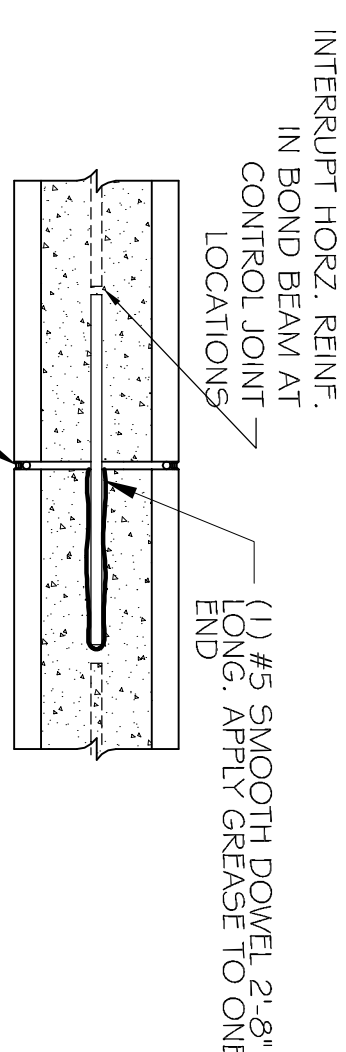
TYPICAL MASONRY CONTROL JOINT

SCALE: N.T.S.



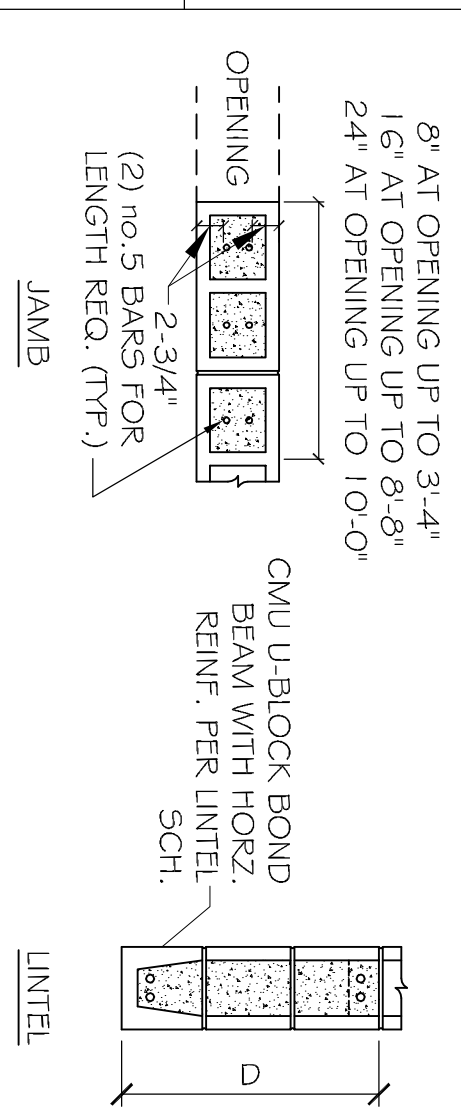
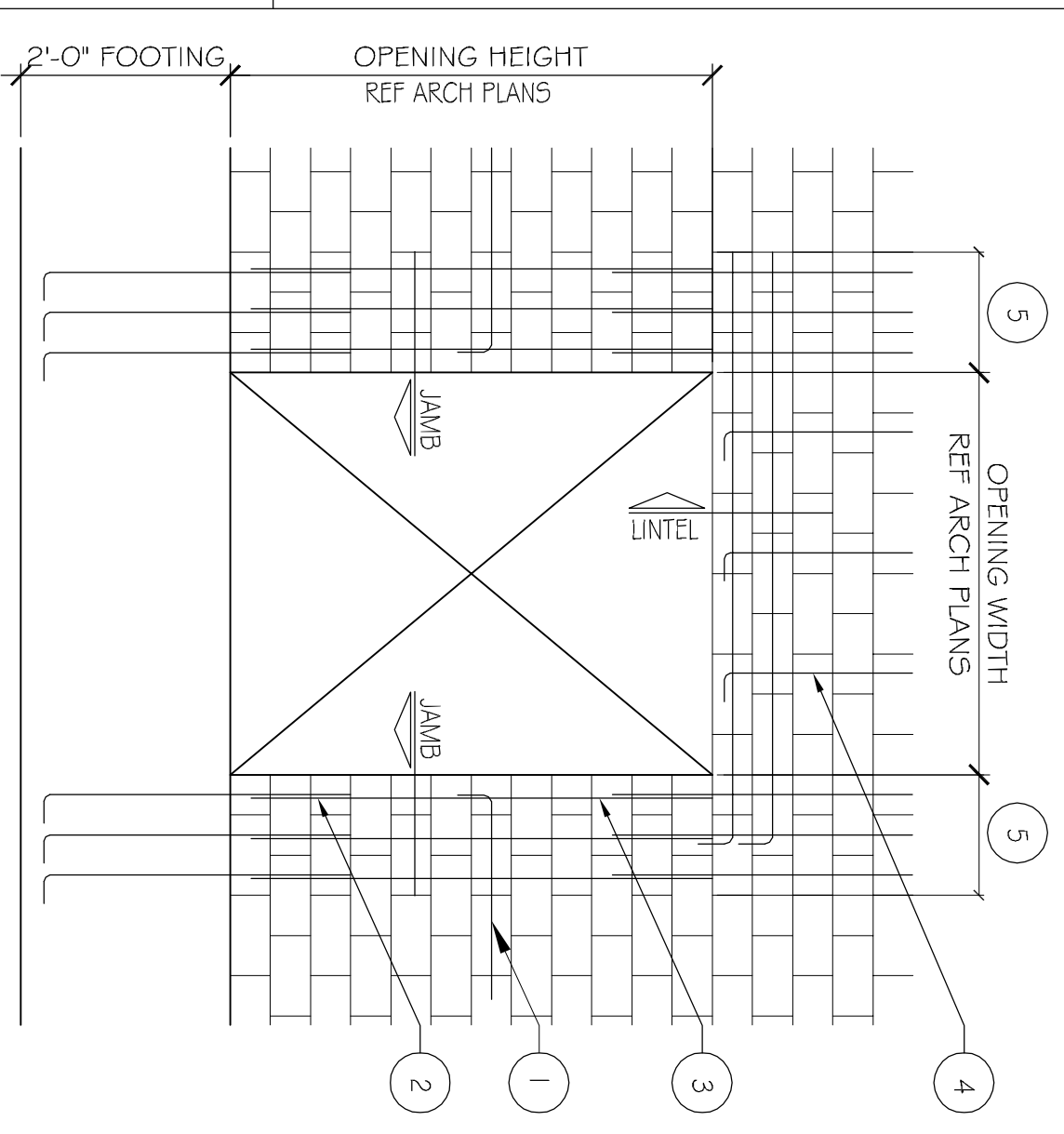
TYPICAL REINF. @ CORNER OF MASONRY

SCALE: N.T.S.



CONTROL JOINT @ BOND BEAM

SCALE: N.T.S.



- NOTES:**
1. WHERE HORIZ. REINFORCEMENT IS INTERRUPTED BY OPENING OR CONTROL JOINT, PROVIDE STANDARD ACI HOOK WITH VERT. WALL SPICES IN VERT. REINF. REF. WALL SECTIONS 5-3.
 2. ALL VERT. BARS AT DOOR JAMBS TO BE FULL HEIGHT.
 3. CONTINUE VERT. WALL REINF. OVER OPENING. ANCHOR VERT. REINF. INTO UNITS BEAM WITH STANDARD ACI HOOK.
 4. PROVIDE STRAIGHT LINTEL REINF. AND 1'-0" FOR LINTEL REINF. WITH STANDARD ACI HOOK.

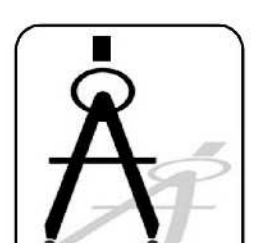
SCALE: N.T.S.

RAINFOREST CARWASH

5026 HARDY ST.
HATTIESBURG, MISSISSIPPI

JOB No: 2176 DATE: 06-28-2013

DRAWN BY: JTL CHECKED BY: CD



DAMMON
ENGINEERING, INC.

CHIEF ENGINEER, EMMETT DAMMON, P.E.
554 OLD SPANISH TRAIL
SLIDELL, LA 70458

dammoneingennn.com
dammoneng@bellsouth.net
PHONE: 985-649-5832
FAX: 985-641-5950

#	DESCRIPTION	DATE
A	ADDED RESTROOMS	07-19-13

OIL CHANGE
FOUNDATION
PLAN AND
DETAILS

S-3

SHEET No: 7 OF 22