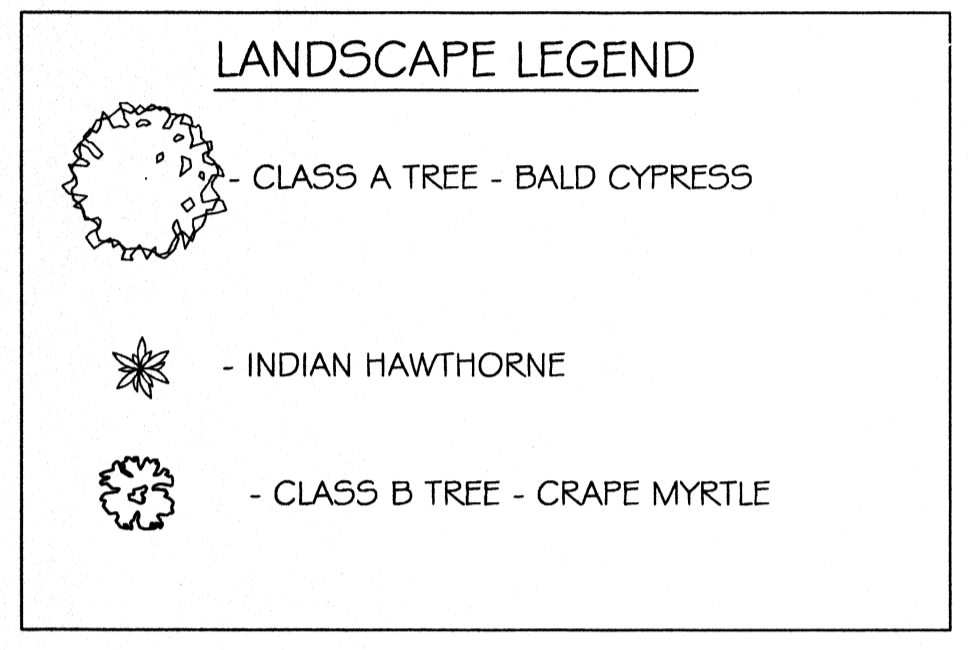
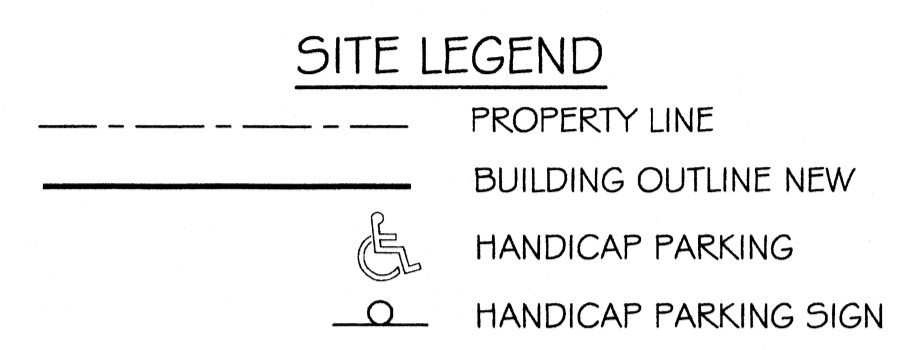


#	DESCRIPTION	DATE

Big Dan
Hart # 13-3691

SITE PLAN

SHEET No:
C2



SITE LIGHTING

EXTERIOR LIGHTING SHALL BE SHADED OR INWARDLY DIRECTED IN SUCH A MANNER SO THAT NO DIRECT LIGHTING OR GLARE BE CAST BEYOND THE PROPERTY LINE. THE INTENSITY OF SUCH LIGHTING SHALL NOT EXCEED ONE FOOT CANDLE AS MEASURED AT THE ABUTTING PROPERTY LINE.

SITE PLAN NOTES

- ROOFING MATERIAL: METAL ROOFING PANEL
- SIDING MATERIAL: CONVENTIONAL STUCCO VENEER & METAL PANELS
- UTILITIES: ALL UTILITIES SHALL BE PLACED UNDERGROUND

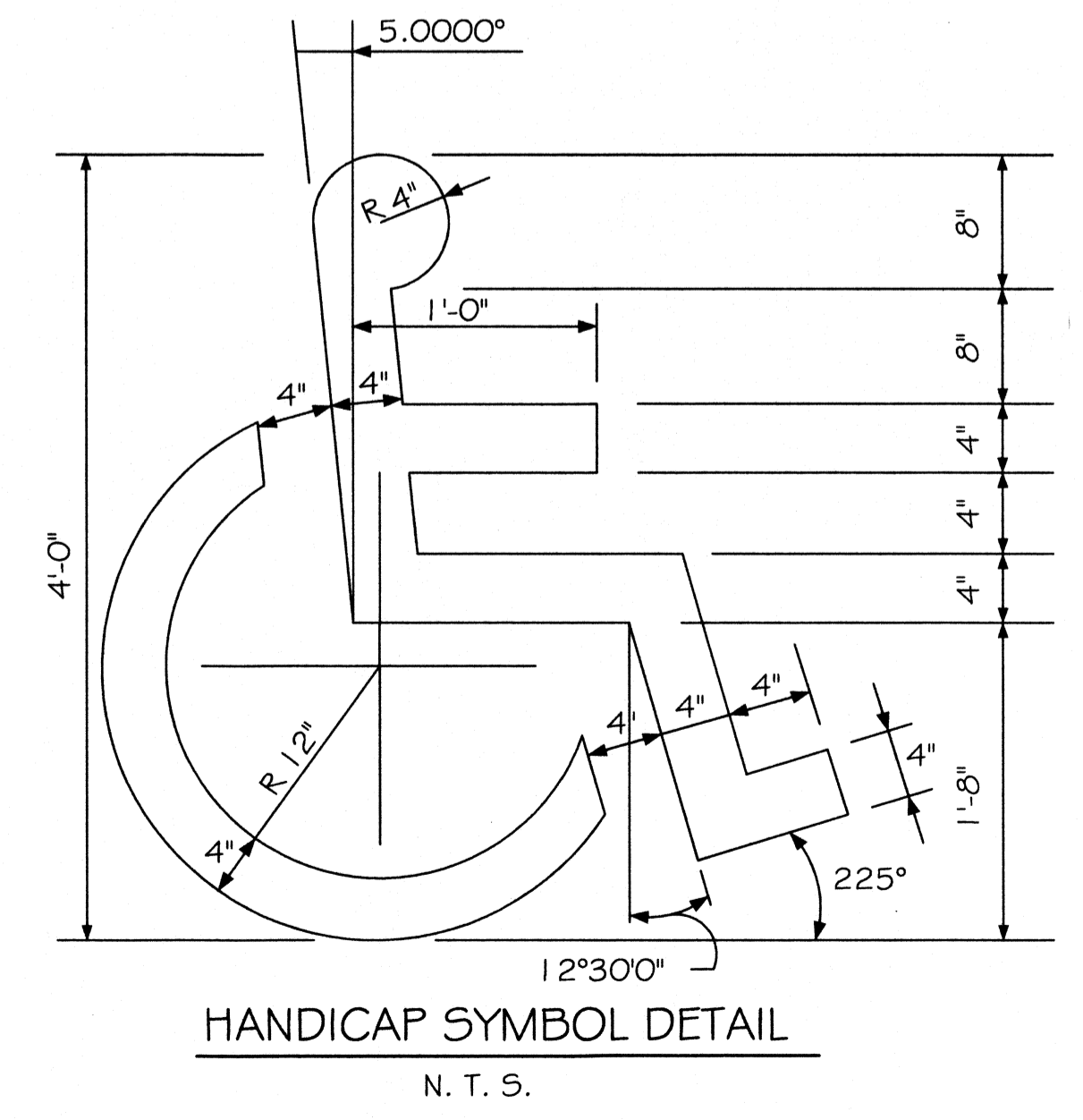
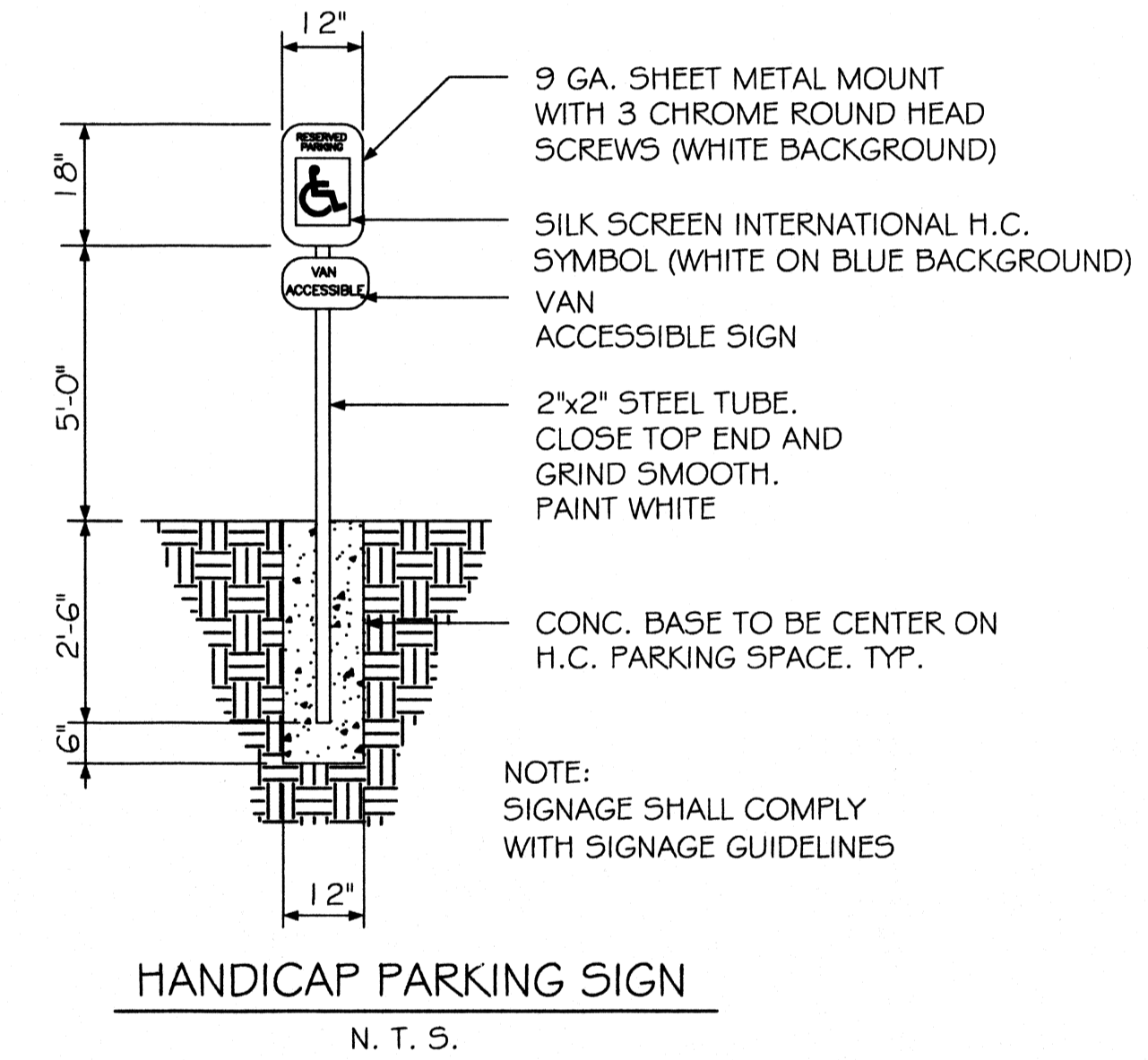
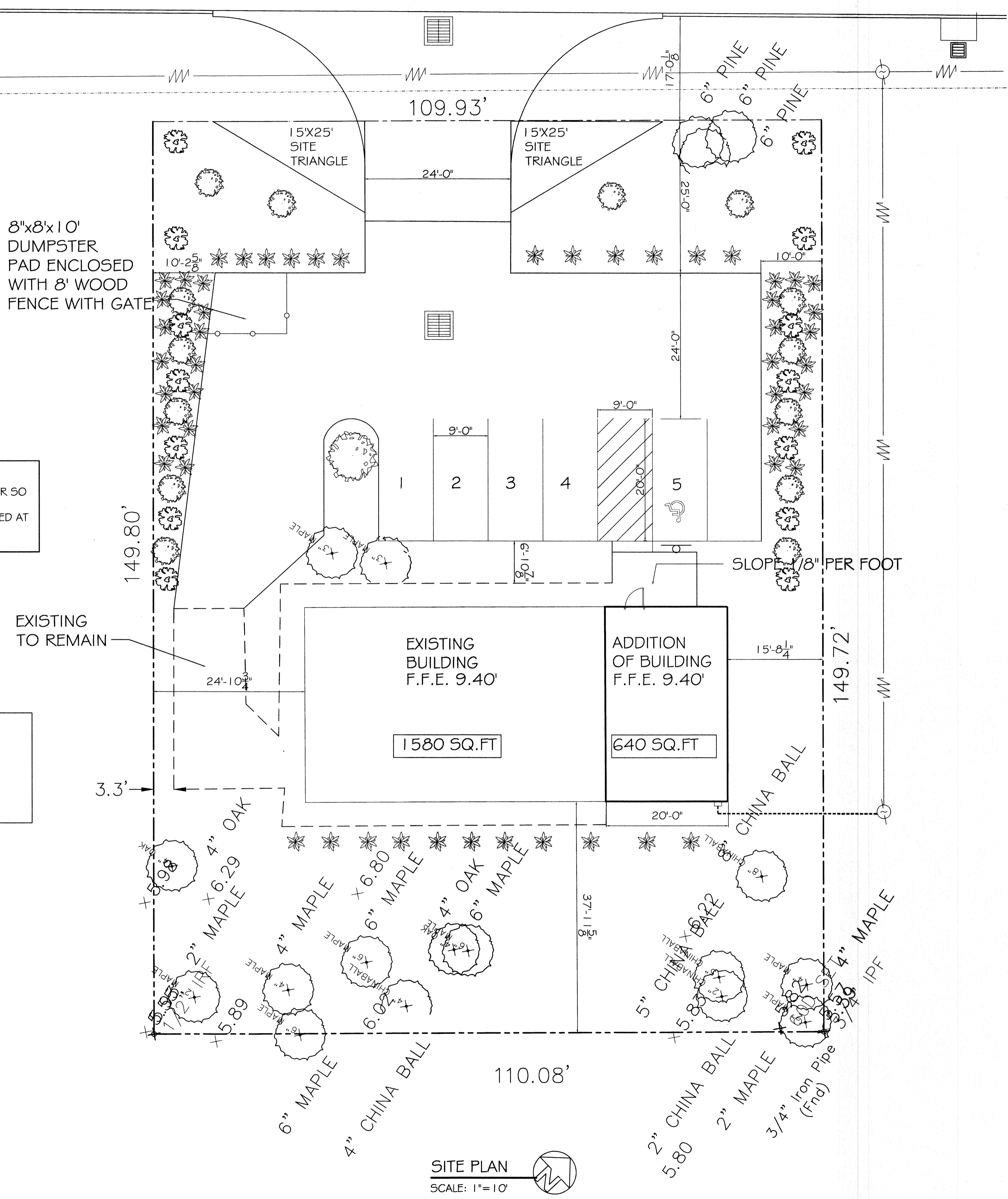
PARKING REQUIREMENTS

REQUIRED: 1 SPACE PER 1000 SF OF STORAGE AREA
1 SPACE PER 400 SF OF OFFICE AREA

PROVIDED: STORAGE = 1066 SF / 1000 = 1 SPACE
OFFICE = 1154 SF / 400 = 3 SPACES

8"x8"x10'
DUMPSTER
PAD ENCLOSED
WITH 8' WOOD
FENCE WITH GATE

EXISTING
TO REMAIN



SITE PLAN
SCALE: 1" = 10'