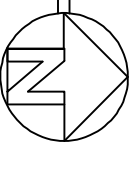
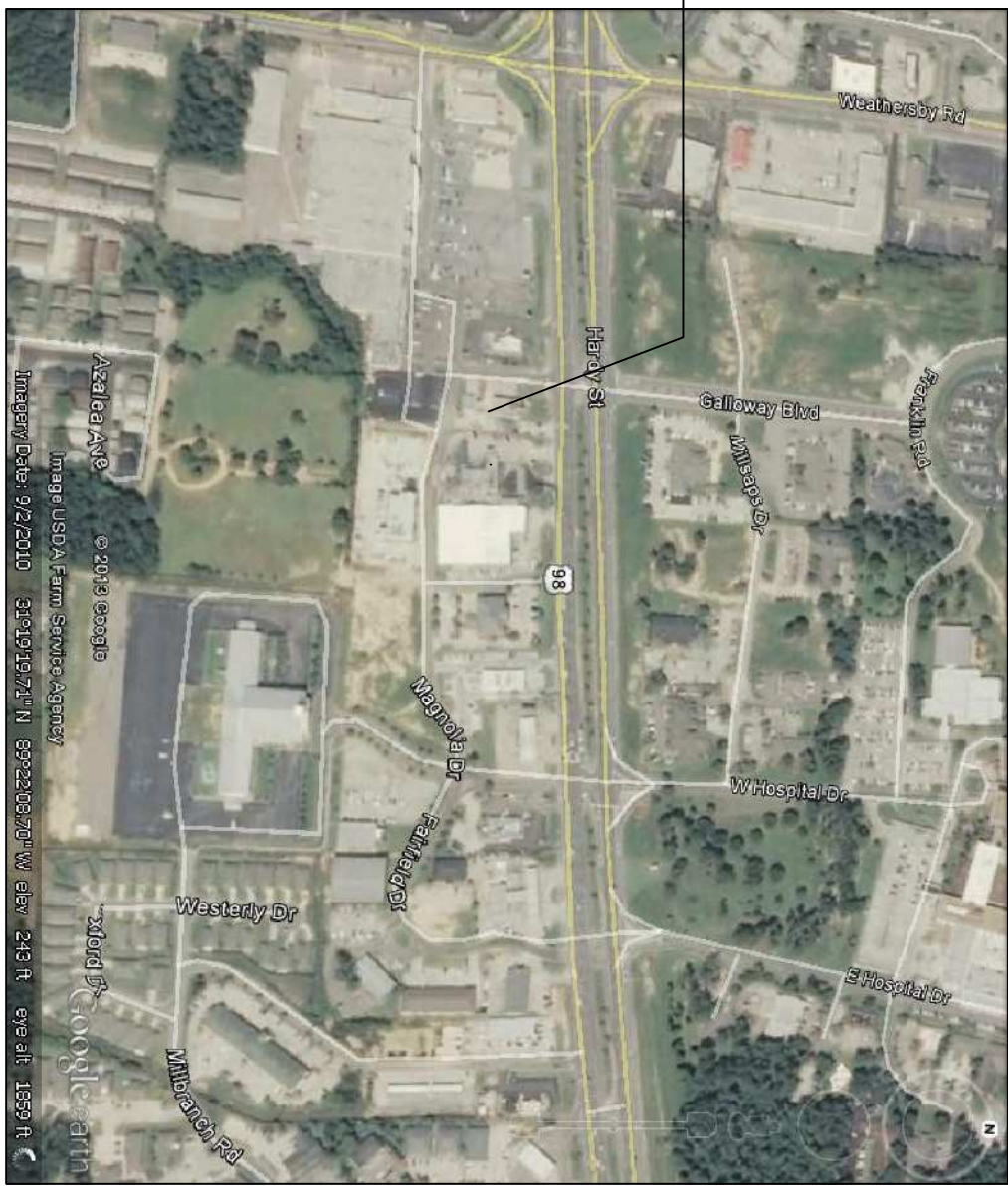


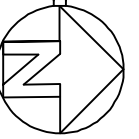
SITE PLAN  
SCALE: 1"=20'-0"



WORK AREA



VICINITY MAP



SITE LEGEND

- PROPERTY LINE
- - - - BUILDING SETBACK MINIMUM
- ➔ DIRECTION OF TRAFFIC FLOW
- ⊙ CAUTION CONES

- SITE PLAN NOTES
1. ROOFING MATERIAL: METAL ROOFING PANEL
  2. SIDING MATERIAL: SHUT FACE BLOCK
  3. UTILITIES: ALL UTILITIES SHALL BE PLACED UNDERGROUND

SITE LIGHTING  
EXTERIOR LIGHTING SHALL BE SHADED OR INWARDLY DIRECTED IN SUCH A MANNER SO THAT NO DIRECT LIGHTING OR GLARE BE CAST BEYOND THE PROPERTY LINE. THE INTENSITY OF SUCH LIGHTING SHALL NOT EXCEED ONE FOOT CANDLE AS MEASURED AT THE ADJUTING PROPERTY LINE.

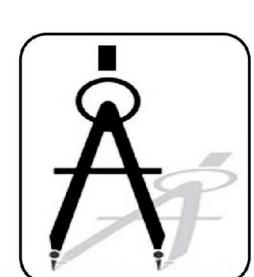
NOTE:  
PAVEMENT IN ALL PARKING AREAS SHALL BE 5" THICK CONCRETE.

ZONED B-5

RAINFOREST CARWASH

5026 HARDY ST.  
HATTIESBURG, MISSISSIPPI

JOB No: 2158 DATE: 05-14-2013  
DRAWN BY: JCT CHECKED BY: CD



**DAMMON**  
ENGINEERING, INC.

CHIEF ENGINEER: EMMETT DAMMON, P.E.  
554 OLD SPANISH TRAIL  
SLIDELL, LA 70458

dammoneengineering.com  
dammoneng@bellsouth.net  
PHONE: 985-641-5632  
FAX: 985-641-5950

REVISIONS	
#	DESCRIPTION

SITE PLAN

SHEET No:

C2