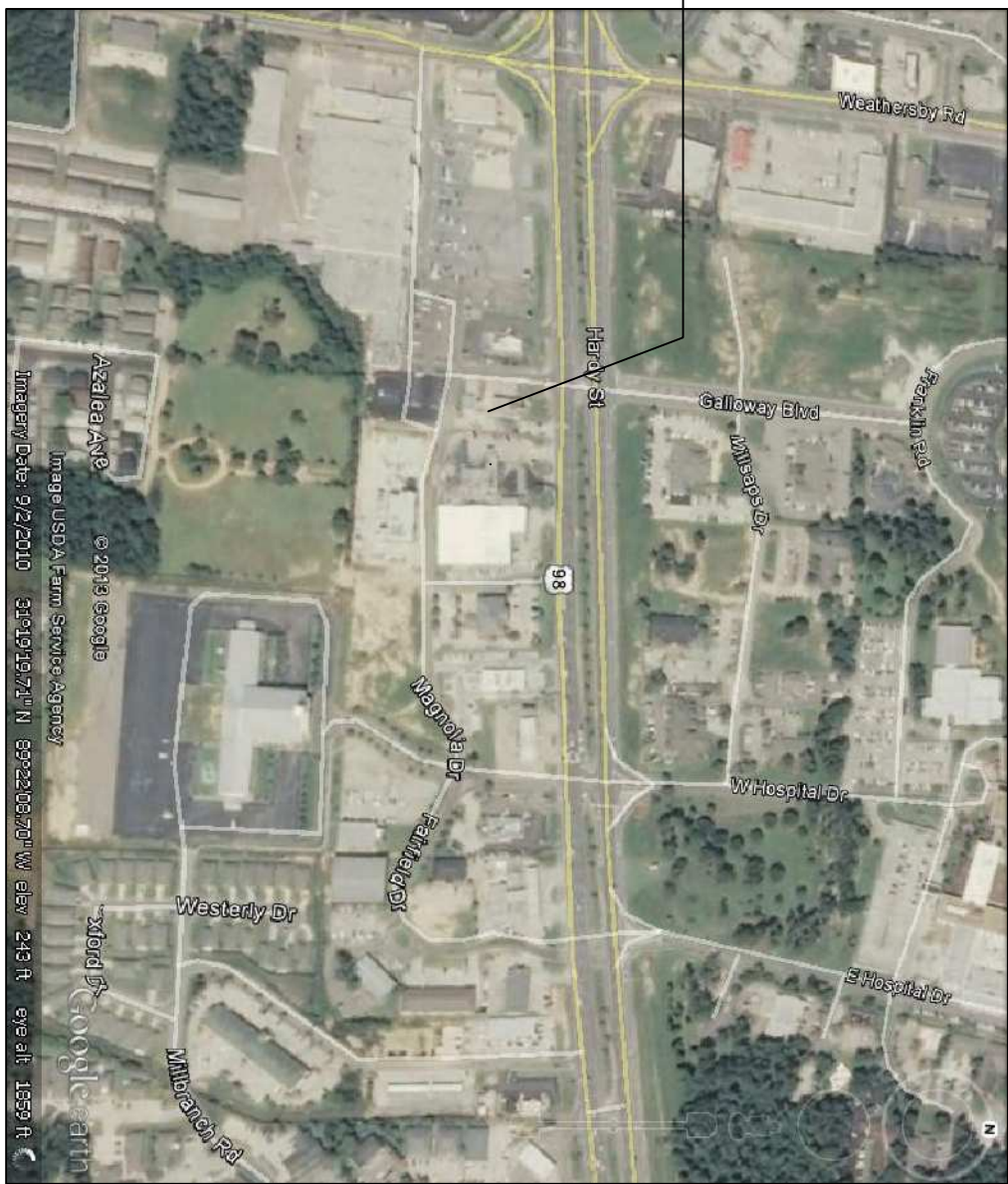


MAGNOLIA DRIVE

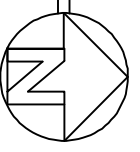
ANGELLES

WORK AREA



VICINITY MAP

SITE PLAN
SCALE: 1"=20'-0"



SITE LEGEND

- PROPERTY LINE
- - - - BUILDING SETBACK MINIMUM
- ➔ DIRECTION OF TRAFFIC FLOW
- ☉ CAUTION CONES
- EXTERIOR LIGHT

- SITE PLAN NOTES**
1. ROOFING MATERIAL: METAL ROOFING PANEL
 2. SIDING MATERIAL: SHUT FACE BLOCK
 3. UTILITIES: ALL UTILITIES SHALL BE PLACED UNDERGROUND

SITE LIGHTING
EXTERIOR LIGHTING SHALL BE SHADED OR INWARDLY DIRECTED IN SUCH A MANNER SO THAT NO DIRECT LIGHTING OR GLARE BE CAST BEYOND THE PROPERTY LINE. THE INTENSITY OF SUCH LIGHTING SHALL NOT EXCEED ONE FOOT CANDLE AS MEASURED AT THE ADJUTING PROPERTY LINE.

NOTE:
PAVEMENT IN ALL PARKING AREAS SHALL BE 5" THICK CONCRETE.

ZONED B-5

RAINFOREST CARWASH

5026 HARDY ST.
HATTIESBURG, MISSISSIPPI

JOB No: 2158 DATE: 05-14-2013
DRAWN BY: JCT CHECKED BY: CD



DAMMON
ENGINEERING, INC.

CHIEF ENGINEER: EMMETT DAMMON, P.E.
554 OLD SPANISH TRAIL
SLIDELL, LA 70458

dammoneengineering.com
dammoneng@bellsouth.net
PHONE: 985-649-5632
FAX: 985-641-5950

REVISIONS

#	DESCRIPTION	DATE

SITE PLAN

SHEET No:

C2